



**World Health
Organization**

Weekly AFP Surveillance Update Pakistan

Week 49 (*Ended on 7th December, 2013*)

AFP Surveillance



National Surveillance Cell Federal EPI

World Health Organization Country Office,
Chak Shahzad, Park Road,
Islamabad, Pakistan

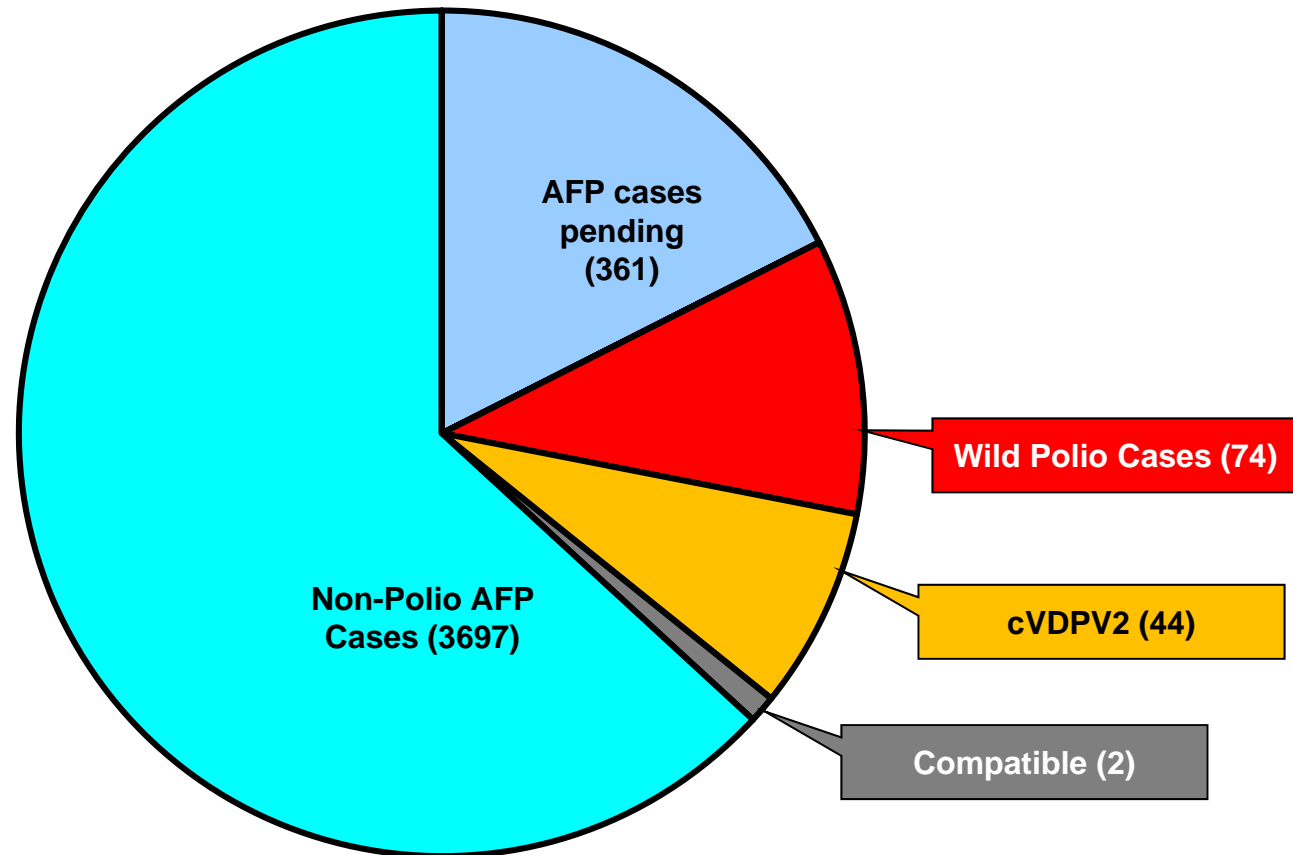
Tel: +92-51 9255123 / 9255282 /9255184

Fax: +92-51 9255274

Email: epidata@pak.emro.who.int

Web site: www.whopak.org

AFP Case Profile, 2013*



Total AFP Cases Reported = 4178

**^153 Inadequate cases pending classification by ERC;
^98 Inadequate cases not due for FUP
^110 Pending in the Lab**

Point in Time Comparison of polio cases by province/region 2012[§] & 2013*

Region/ Province	No. of polio cases		No. of infected districts/towns		Last polio case
	2012	2013	2012	2013	
Khyber Pakhtunkhwa	27	10	13	6	26-Oct-13
FATA / FR Areas	20	51	6	4	26-Nov-13
Sindh	4	7	4	5	09-Nov-13
Balochistan	4	-	2	-	02-Oct-12
Punjab	2	6	2	5	21-Oct-13
Gilgit-Baltistan	1	-	1	-	06-Aug-12
Pakistan	58	74	28	20	26-Nov-13

Six additional districts/town declared infected based on environmental samples in 2013

Total polio cases of 2012 are 58

* Afp.rec Data as of 09-12-2013

§Based on date of onset

Table 1: List of Confirmed Polio Cases, Pakistan 2013* (1/4)

S.NO.	PROVINCE/ REGION	DISTRICT	TEHSIL	EPID NO.	SEX	AGE (m)	DATE ONSET OF PARALYSIS	NO. OPV DOSES (based on parents recall)		FEVER	Asymmetric Paralysis	Rapid Progression	REFUSAL	WPV TYPE	GENETICS
								Route	SIAs						Cluster
1	SINDH	BIN QASIM	BIN QASIM	SD/62/13/001	M	24	14-Jan-13	0	0	N	Y	Y	Y	NSL1	R4B
2	KP	BANNU	BANNU	NW/61/13/002	M	13	26-Jan-13	0	0	Y	N	Y	Y	NSL1	R4B
3	PUNJAB	MIWANWALI	ISAKHEL	PB/43/13/005	F	36	07-Feb-13	3	7+	Y	N	Y	N	NSL1	R4B
4	KP	MALAKAND	DARGAI	NW/20/13/006	F	3	08-Feb-13	2	2	Y	N	Y	N	NSL1	R4B
5	KP	MARDAN	MARDAN	NW/40/13/009	M	30	12-Feb-13	3	7+	Y	N	Y	N	NSL1	R4B
6	SINDH	DADU	MEHAR	SD/24/13/006	F	15	22-Mar-13	0	2	Y	N	Y	N	NSL1	R2B
7	KP	MARDAN	MARDAN	NW/40/13/026	M	8	22-Apr-13	0	0	Y	Y	Y	Y	NSL1	R4B
8	FATA	KHYBER\$	BARA	FT/34/13/008	M	10	24-Apr-13	2	4	Y	Y	N	N	NSL1	R4B
9	FATA	FR BANNU	FR BANNU	FT/69/13/001	M	16	03-May-13	0	3	Y	Y	Y	Y	NSL1	R4B
10	FATA	KHYBER\$	BARA	FT/34/13/010	M	8	10-May-13	0	0	Y	Y	Y	N	NSL1	R4B
11	FATA	KHYBER\$	BARA	FT/34/13/013	M	24	11-May-13	2	3	Y	N	Y	N	NSL1	R4B
12	FATA	KHYBER\$	BARA	FT/34/13/011	M	23	14-May-13	0	2	Y	Y	Y	N	NSL1	R4B
13	FATA	KHYBER\$	BARA	FT/34/13/012	M	4	16-May-13	0	0	Y	N	Y	N	NSL1	R4B
14	FATA	FR BANNU	FR BANNU	FT/69/13/002	F	22	19-May-13	0	7+	Y	N	Y	N	NSL1	R4B
15	FATA	KHYBER\$	BARA	FT/34/13/014	M	30	20-May-13	0	0	Y	N	Y	N	NSL1	R4A
16	FATA	WAZIR-N\$	MIR ALI	FT/64/13/010	M	9	24-May-13	0	0	Y	Y	Y	N	NSL1	R4B
17	PUNJAB	MBDIN	MALIKWAL	PB/24/13/013	F	96	26-May-13	3	7+	Y	Y	Y	N	NSL1	R4B
18	FATA	KHYBER\$	BARA	FT/34/13/015	M	15	06-June-13	0	0	Y	Y	Y	N	NSL1	R4B
19	FATA	WAZIR-N\$	MIR ALI	FT/64/13/014	F	11	15-June-13	0	0	Y	Y	Y	N	NSL1	R4B
20	FATA	KHYBER\$	BARA	FT/34/13/019	F	12	23-June-13	0	0	Y	N	Y	N	NSL1	R4B
21	KP	PESHAWAR	PESHAWAR	KP/30/13/042	M	12	30-June-13	0	0	Y	N	Y	Y	NSL1	R4B
22	FATA	KHYBER\$	BARA	FT/34/13/020	F	12	03-July-13	0	0	N	N	Y	N	NSL1	R4B

\$ Security compromised area

* Afp.rec Data as of 05-12-2013

Table 1.1: List of Confirmed Polio Cases, Pakistan 2013* (2/4)

S.NO.	PROVINCE/ REGION	DISTRICT	TEHSIL	EPID NO.	SEX	AGE (m)	DATE ONSET OF PARALYSIS	NO. OPV DOSES (based on parents recall)		FEVER	Asymmetric Paralysis	Rapid Progression	REFUSAL	W/PV TYPE	GENETICS
								Route	SIAs						Cluster
23	SINDH	KHIGADDAP	GADDAP	SD/63/13/015	F	12	09-July-13	3	6	Y	Y	Y	N	NSL1	R4B
24	FATA	WAZIR-N\$	MIRAN SHAH	FT/64/13/018	F	18	13-July-13	0	0	Y	Y	Y	N	NSL1	R4B
25	FATA	FR BANNU	FR BANNU	FT/69/13/006	M	18	27-July-13	0	7+^	Y	N	Y	N	NSL1	R4B
26	FATA	WAZIR-N\$	MIR ALI	FT/64/13/032	F	21	05-Aug-13	0	0	Y	Y	Y	N	NSL1	R4B
27	FATA	WAZIR-N\$	RAZMAK	FT/64/13/033	M	11	11-Aug-13	0	0	Y	Y	Y	N	NSL1	R4B
28	KP	KOHAT	KOHAT	KP/50/13/017	F	10	19-Aug-13	0	5	Y	Y	Y	N	NSL1	R4B
29	FATA	WAZIR-N\$	RAZMAK	FT/64/13/044	M	8	24-Aug-13	0	0	Y	N	Y	N	NSL1	R4B
30	FATA	FR DIKHAN	FR DIKHAN	FT/68/13/001	M	36	26-Aug-13	1	1	Y	N	Y	N	NSL1	R4B
31	FATA	KHYBER\$	BARA	FT/34/13/027	F	13	30-Aug-13	0	2	Y	Y	Y	N	NSL1	R4A
32	FATA	KHYBER\$	LANDI KOTAL	FT/34/13/028	M	18	30-Aug-13	0	0	Y	Y	Y	N	NSL1	R4A
33	KP	PESHAWAR	PESHAWAR	KP/30/13/068	M	6	31-Aug-13	0	0	Y	Y	Y	N	NSL1	R4B
34	FATA	WAZIR-N\$	MIR ALI	FT/64/13/050	F	13	01-Sep-13	0	0	Y	Y	Y	N	NSL1	R4B
35	FATA	WAZIR-N\$	MIRAN SHAH	FT/64/13/051	F	11	05-Sep-13	0	0	Y	Y	Y	N	NSL1	R4B
36	FATA	KHYBER\$	LANDI KOTAL	FT/34/13/032	F	8	05-Sep-13	0	4	Y	Y	Y	N	NSL1	R4A
37	FATA	WAZIR-N\$	RAZMAK	FT/64/13/053	F	17	06-Sep-13	0	0	Y	Y	Y	N	NSL1	R4B
38	FATA	WAZIR-N\$	MIR ALI	FT/64/13/055	F	7	08-Sep-13	1	0	Y	Y	Y	N	NSL1	R4B
39	KP	SWABI	SWABI	KP/41/13/037	F	2	10-Sep-13	0	0	Y	Y	Y	N	NSL1	R4B
40	FATA	KHYBER\$	BARA	FT/34/13/029	M	11	10-Sep-13	3	7+	Y	Y	Y	N	NSL1	R4B
41	FATA	WAZIR-N\$	MIR ALI	FT/64/13/056	M	10	10-Sep-13	3	0	Y	Y	Y	N	NSL1	R4B
42	SINDH	KHIGADAP	GADAP	SD/63/13/022	M	12	19-Sep-13	0	6^	Y	Y	Y	N	NSL1	R4B
43	FATA	WAZIR-N\$	MIR ALI	FT/64/13/068	F	16	20-Sep-13	0	0	Y	Y	Y	N	NSL1	R4B
44	FATA	WAZIR-N\$	MIR ALI	FT/64/13/069	F	12	20-Sep-13	0	0	Y	Y	Y	N	NSL1	R4B

\$ Security compromised area

^Under investigation

* Afp.rec Data as of 05-12-2013

Table 1.2: List of Confirmed Polio Cases, Pakistan 2013* (3/4)

S.NO.	PROVINCE/ REGION	DISTRICT	TEHSIL	EPID NO.	SEX	AGE (m)	DATE ONSET OF PARALYSIS	NO. OPV DOSES (based on parents recall)		FEVER	Asymmetric Paralysis	Rapid Progression	REFUSAL	W/PV TYPE	GENETICS
								Route	SIA's						Cluster
45	FATA	FR BANNU	FR BANNU	FT/69/13/013	F	12	22-Sep-13	0	0	Y	Y	Y	N	NSL1	R4B
46	FATA	KHYBER\$	BARA	FT/34/13/030	M	15	24-Sep-13	3	0	Y	Y	Y	N	NSL1	R4B
47	KP	PESHAWAR	PESHAWAR	KP/30/13/079	M	8	24-Sep-13	3	7^	Y	N	Y	N	NSL1	R4B
48	FATA	KHYBER\$	BARA	FT/34/13/033	M	30	26-Sep-13	3	3	Y	Y	Y	N	NSL1	R4A
49	FATA	WAZIR-N\$	MIR ALI	FT/64/13/071	M	8	26-Sep-13	0	0	Y	Y	Y	N	NSL1	R4B
50	PUNJAB	SHEIKUPURA	MURIDKE	PB/33/13/057	M	12	26-Sep-13	0	2	Y	N	Y	N	NSL1	R4B
51	FATA	FR BANNU	FR BANNU	FT/69/13/016	F	24	28-Sep-13	0	0	Y	Y	Y	N	NSL1	R4B
52	FATA	WAZIR-N\$	MIR ALI	FT/64/13/074	F	37	28-Sep-13	0	0	Y	Y	Y	N	NSL1	R4B
53	FATA	FR BANNU	FR BANNU	FT/69/13/017	M	11	01-Oct-13	0	0	Y	Y	Y	N	NSL1	R4B
54	SINDH	KASHMORE	TANGWANI	SD/54/13/010	F	10	03-Oct-13	2	5	N	N	N	N	NSL1	R3B
55	FATA	KHYBER\$	LANDI KOTAL	FT/34/13/036	M	12	05-Oct-13	0	7^	Y	Y	Y	N	NSL1	R4B
56	PUNJAB	TTSINGH	KAMALIA	PB/52/13/045	M	9	09-Oct-13	3	4	Y	N	Y	N	NSL1	R4B
57	FATA	WAZIR-N\$	MIR ALI	FT/64/13/084	F	18	09-Oct-13	0	0	Y	Y	Y	N	NSL1	R4B
58	FATA	WAZIR-N\$	RAZMAK	FT/64/13/083	M	15	11-Oct-13	0	0	Y	Y	Y	N	NSL1	R4B
59	FATA	WAZIR-N\$	MIR ALI	FT/64/13/087	F	13	14-Oct-13	0	0	Y	Y	Y	N	NSL1	R4B
60	FATA	KHYBER\$	BARA	FT/34/13/040	M	9	15-Oct-13	0	0	Y	Y	Y	N	NSL1	R4A
61	FATA	WAZIR-N\$	MIR ALI	FT/64/13/086	M	15	16-Oct-13	0	0	Y	Y	Y	N	NSL1	R4B
62	PUNJAB	TTSINGH	KAMALIA	PB/52/13/046	F	13	21-Oct-13	1	5	Y	Y	Y	N	NSL1	R4B
63	PUNJAB	SAHIWAL	SAHIWAL	PB/65/13/047	M	15	21-Oct-13	3	6	Y	N	Y	N	NSL1	R4B
64	FATA	WAZIR-N\$	MIRAN SHAH	FT/64/13/093	M	24	25-Oct-13	0	0	Y	Y	Y	N	NSL1	
65	KP	PESHAWAR	PESHAWAR	KP/30/13/088	M	9	26-Oct-13	0	7^	Y	Y	Y	N	NSL1	
66	FATA	FR BANNU	FR BANNU	FT/69/13/023	M	14	04-Nov-13	0	0	Y	Y	Y	N	NSL1	

\$ Security compromised area

^Under investigation

* Afp.rec Data as of 05-12-2013

Table 1.3: List of Confirmed Polio Cases, Pakistan 2013* (4/4)

S.NO.	PROVINCE/ REGION	DISTRICT	TEHSIL	EPID NO.	SEX	AGE (m)	DATE ONSET OF PARALYSIS	NO. OPV DOSES (based on parents recall)		FEVER	Asymmetric Paralysis	Rapid Progression	REFUSAL	WPV TYPE	GENETICS
								Routi ne	SIA's						Cluster
67	FATA	KHYBER\$	LANDI KOTAL	FT/34/13/047	M	12	06-Nov-13	0	0	Y	N	Y	N	NSL1	
68	FATA	WAZIR-N\$	MIRAN SHAH	FT/64/13/107	F	24	11-Nov-13	0	0	Y	N	Y	N	NSL1	
69	FATA	WAZIR-N\$	MIR ALI	FT/64/13/109	M	24	12-Nov-13	0	0	Y	Y	Y	N	NSL1	
70	FATA	WAZIR-N\$	MIRAN SHAH	FT/64/13/106	F	36	16-Nov-13	0	0	Y	N	Y	N	NSL1	
71	SINDH	BIN QASIM	BIN QASIM	SD/62/13/011	M	8	18-Oct-13	3	1	Y	Y	Y	N	NSL1	
72	SINDH	BALDIA	BALDIA	SD/61/13/011	F	4	09-Nov-13	0	0	Y	N	Y	N	NSL1	
73	FATA	KHYBER\$	LANDI KOTAL	FT/34/13/046	M	16	01-Nov-13	0	7^	Y	Y	Y	N	NSL1	
74	FATA	WAZIR-N\$	MIR ALI	FT/64/13/116	M	11	26-Nov-13	0	0	Y	Y	Y	N	NSL1	

\$ Security compromised area

New Case

^Under investigation

* Afp.rec Data as of 09-12-2013

Table 2: LAB Update 2013*

Month of Onset	AFP Cases	No virus isolated	Cases Under Process		Isolated Viruses from stools						
			Culture	ITD	Vaccine viruses		NPEV		Wild	Results within 14 days	
			n	n	n	%	n	%	n	n	%
January	333	275	0	0	19	6	37	11%	2	333	100%
February	330	285	0	0	16	5	26	8%	3	330	100%
March	308	248	0	0	7	2	52	17%	1	308	100%
April	352	244	0	0	22	6	84	24%	2	352	100%
May	419	304	0	0	15	4	91	22%	9	419	100%
June	469	326	0	0	21	4	118	25%	4	469	100%
July	391	239	0	0	13	3	135	35%	4	391	100%
August	459	292	0	0	24	5	135	29%	8	459	100%
September	466	297	0	0	32	7	119	26%	19	467	100%
October	403	301	5	1	24	6	60	15%	14	399	99%
November	321	131	129	13	12	4	29	9%	8	180	56%
December	3	0	3	0	0	0	0	0%	0	0	0%
Pakistan	4254	2942	137	14	205	5	886	21%	74	4107	97%

* Data as of 05-12-2013

Table 3: Urgent / ITD Pending Cases (1/2)

Basic information										OPV doses				Urgent		Prov	Lab update			Remarks
S. #	District	Tehsil	Union council	Epid number	Date of Onset	Age (M)	Sex	Date of 1st stool	Stool Adeq	Ri	SIAs	Last 6 SIAs	Last dose	By Field	By NSCC	Diagnosis	Lab No.	Days Inoc	Culture update	
Isolates pending for ITSD																				
1	SHARANI	SHARANI	#	BN/26/13/004	09-Nov-13	36	F	21-Nov-13	-	#	#			N	N	#	5422	7	SL1,3	Waiting rRTPCR for VDPV
2	BAJOUR	NAWAGAI	HILALKHEL	FT/33/13/040	30-Sep-13	48	F	25-Nov-13	N	3	7+	6	19-Sep-13	N	N	TRAUMA / INJ NEURITIS	5496	5	L20B+	
3	BAJOUR	SALARZAI	CHOWRAK	FT/33/13/041	17-Nov-13	84	F	25-Nov-13	Y	0	7+	UK		N	N	TRAUMA	5497	6	L20B+	
4	ORAKZAI *	LOWER ORAKZAI	MIROBAK	FT/53/13/005	17-Nov-13	29	F	27-Nov-13	Y	3	7+	6	30-Sep-13	N	N	FOOT DROP	5498	9	L20B+	
5	WAZIR-N	MIRAN SHAH	DOGA	FT/64/13/112	17-Nov-13	16	F	23-Nov-13	Y	0	0	0		Y	Y	MENINGITIS/POLIO	5437	5	P2	Discordant O
6	WAZIR-N	MIRAN SHAH	TORTANA	FT/64/13/113	15-Nov-13	12	M	23-Nov-13	Y	0	0	0		Y	Y	POLIO	5439	5	SL1	Waiting rRTPCR for VDPV screening
7	BATAGRAM	ALLAI	SAKARGAH	KP/11/13/007-C1		60	M	26-Nov-13		-	-		20-Nov-13	N	-		5512	4	L20B+	
8	NOWSHERA	NOWSHERA	ZIARAT KAKA	KP/32/13/042	19-Nov-13	34	M	20-Nov-13	Y	3	7+	6	01-Oct-13	N	N	HISTORY OF INJECTION	5385	7	P2	Discordant O
9	PESHAWAR	PESHAWAR	MATTANI	KP/30/13/097-C2		8	M	20-Nov-13	-	-	-			N	-		5340	5	P2	Discordant O
10	PESHAWAR	PESHAWAR	UMER BALA	KP/30/13/104	25-Nov-13	6	M	27-Nov-13	Y	0	3	2	09-Oct-13	Y	N	POLIO / TRAUMA	5495	3	SL1	Waiting rRTPCR for VDPV screening
11	PESHAWAR *	PESHAWAR	AKHOONABAD	KP/30/13/106	05-Oct-13	25	M	29-Nov-13	N	3	7+	4	27-Aug-13	N	N	PSEUDO PARALYSIS	5525	7	L20B+	
12	CHINIOT *	BAWANA	24	PB/54/13/030	29-Nov-13	48	M	01-Dec-13	Y	3	7+	6	20-Nov-13	N	N	PSUDO PARALYSIS	5546	5	L20B+	
13	FAISALABAD	FAISALABAD SADAR	131	PB/51/13/090-C2		3	F	26-Nov-13	-	-	-		30-Sep-13	N	-		5466	7	L20B+	
14	JHELUM	DINA	DINA 24	PB/14/13/037	07-Nov-13	66	M	16-Nov-13	Y	4	7+	5	15-Apr-13	N	N	ARTHRITIS	5259	7	P2	Discordant O
15	NANKANASAHIR	SHAHKOT	SH-8	PB/35/13/032	18-Nov-13	25	M	24-Nov-13	Y	3	7+	6	01-Oct-13	N	N	TRAUMATIC NEURITIS	5420	7	L20B+	
16	BADIN	TANDO BAGO	PANGRIO	SD/23/13/038	19-Nov-13	36	F	23-Nov-13	Y	3	7+	6	20-Aug-13	N	N	HEMIPLEGIA/CVA	5418	8	L20B+	
17	KHINNAZIM *	N-NAZIMABAD	2	SD/74/13/006	17-Nov-13	24	M	25-Nov-13	Y	0	7+	6	30-Sep-13	N	N	HYPOKALEMIA	5502	7	L20B+	
18	MIRPURKHAS	JHUDO	DILAWAR	SD/31/13/060	15-Nov-13	22	M	22-Nov-13	Y	3	7+	6	30-Sep-13	N	N	HEMIPLEGIA/CVA	5424	7	L20B+	

* New addition

§ New results

#Data not available

¥ NSC Criteria = Fever, Rapid Progress, Age < 48 months and OPV Doses < 7

UP = Under process

Urgent (Field/NSC) / Inadequate specimens / Age 12-35 months / Zero OPV dose

OPending for genomic sequencing

* Data as of 09-12-2013

Table 3.1: Urgent / ITD Pending Cases (2/2)

S. #	Basic information									OPV doses				Urgent		Prov Diagnosis	Lab update			Remarks
	District	Tehsil	Union council	Epid number	Date of Onset	Age (M)	Sex	Date of 1st stool	Stool Adeq	RI	SIAs	Last 6 SIAs	Last dose	By Field	By NSC§		Lab No.	Days Inoc	Culture update	
19	THATTA	JATI	KOTHI	SD/22/13/049-C3		24	F	21-Nov-13	-	-	-	-	-	N	-	5393	7	SL2	Waiting rRTPCR for VDPV screening	
Reported urgent (by field / NSC§ criteria)																				
20	ZHOB *	ZHOB	NASARABAD	BN/21/13/011	20-Nov-13	24	M	28-Nov-13	Y	0	4	4	01-Nov-13	N	Y	PARAPLEGIA	5521	7	UP	
21	BATAGRAM	ALLAI	SAKARGAH	KP/11/13/007	12-Nov-13	48	M	19-Nov-13	N	0	7+	5		N	N	BOTULISM / GBS	5298	17	UP	DISCARDED WITH NVI BUT CONTACT IS UP
22	PESHAWAR	PESHAWAR	MATTANI	KP/30/13/097	02-Oct-13	9	F	19-Nov-13	N	0	0	0		Y	Y	SUSPECTED POLIO	5338	17	UP	DISCARDED WITH EV BUT CONTACT IS UP
23	FAISALABAD	FAISALABAD SADAR	131	PB/51/13/090	11-Nov-13	40	M	26-Nov-13	N	3	7+	6	30-Sep-13	N	N	#	5464	10	UP	
24	FAISALABAD *	CHAK JHUMRA	9	PB/51/13/091	16-Nov-13	96	F	26-Nov-13	Y	3	7+	6		Y	N	HEMIPLEGIA	5508	7	UP	

* New addition § New results #Data not available † NSC Criteria = Fever, Rapid Progress, Age < 48 months and OPV Doses < 7 UP = Under process
Urgent (Field/NSC) / Inadequate specimens / Age 12-35 months / Zero OPV dose OPending for genomic sequencing

Summary of Laboratory data for Environmental Surveillance- Pakistan (Jan 2012 to date)

Report for Epidemiological week= 48 (24 – 30 Nov, 2013)



- Wild poliovirus type 1 (WPV1)
- Wild poliovirus type 3 (WPV3)
- Mixture WPV1 & WPV3
- No WPV Isolated
- Under process
- X Scheduled sampling, sample not collected
- No sampling scheduled
- Mixture WPV1 & VDPV type 2

SUMMARY

Total Sites = 23

Total Samples Collected (2011-2012-2013) = 695

Total Samples with results available = 675

Total samples positive for Wild PV (2011-2012-2013) = **270** (136+88+46) (WPV1= 270)

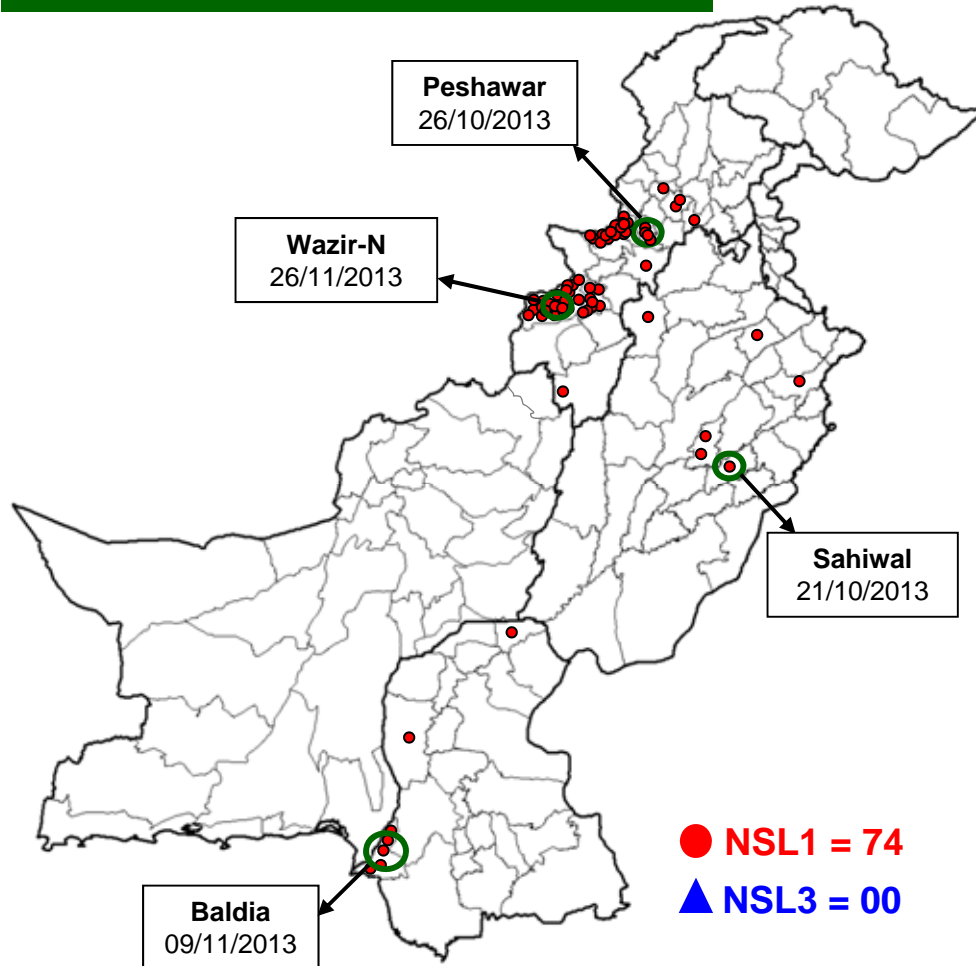
Samples Positive for VDPV = 1 (Type 2 VDPV from KHI-Gadaap)

Comparison environmental sampling results 2012-13*

DISTRICT	2012			2013			Last isolate
	TOTAL	WILD		TOTAL	WILD		
	n	n	%	n	n	%	
LAHORE	33	18	55%	55	0	0%	20-Nov-12
MULTAN	33	4	12%	33	1	3%	18-Sep-13
RAWALPINDI	11	7	64%	11	4	36%	24-Sep-13
FAISALABAD	6	1	17%	33	1	3%	03-Jan-13
KHIGIQBAL	22	4	18%	22	4	18%	08-Nov-13
KHIGADAP	22	15	68%	31	11	35%	23-Oct-13
KHIBALDIA	22	1	5%	22	1	5%	25-Oct-13
SUKKUR	15	7	47%	22	0	0%	05-Sep-12
HYDERABAD	5	5	100%	11	7	64%	12-Aug-13
PESHAWAR	22	18	82%	22	18	82%	11-Nov-13
QUETTA	25	3	12%	32	1	3%	20-Feb-13
PAKISTAN	216	83	38%	294	48	16%	11-Nov-13

Map1: Distribution of Wild Polio cases Pakistan 2013*

Districts/ Towns with Wild Polio cases = 20



Province/ Country	Date of Last Case		Number of cases 2013	
	P1	P3	P1	P3
PUNJAB	Oct, 2013	Jun, 2010	6	-
SINDH	Nov, 2013	Jan, 2010	7	-
KHYBER- PAKHTUNKHWA	Oct, 2013	Oct, 2010	10	-
FATA	Nov, 2013	Apr, 2012	51	-
BALUCHISTAN	Oct, 2012	Apr, 2010	-	-
AJK	-	Jun, 2000	-	-
GILGIT-BALTISTAN	Aug, 2012	-	-	-
ISLAMABAD	Sep, 2008	Sep, 2008	-	-
PAKISTAN	Nov, 2013	Apr, 2012	74	-

○ District with last polio case in province

Cases randomly placed
in districts

— Provincial Boundary
— Districts Boundary

* Afp.rec Data as of 09-12-2013

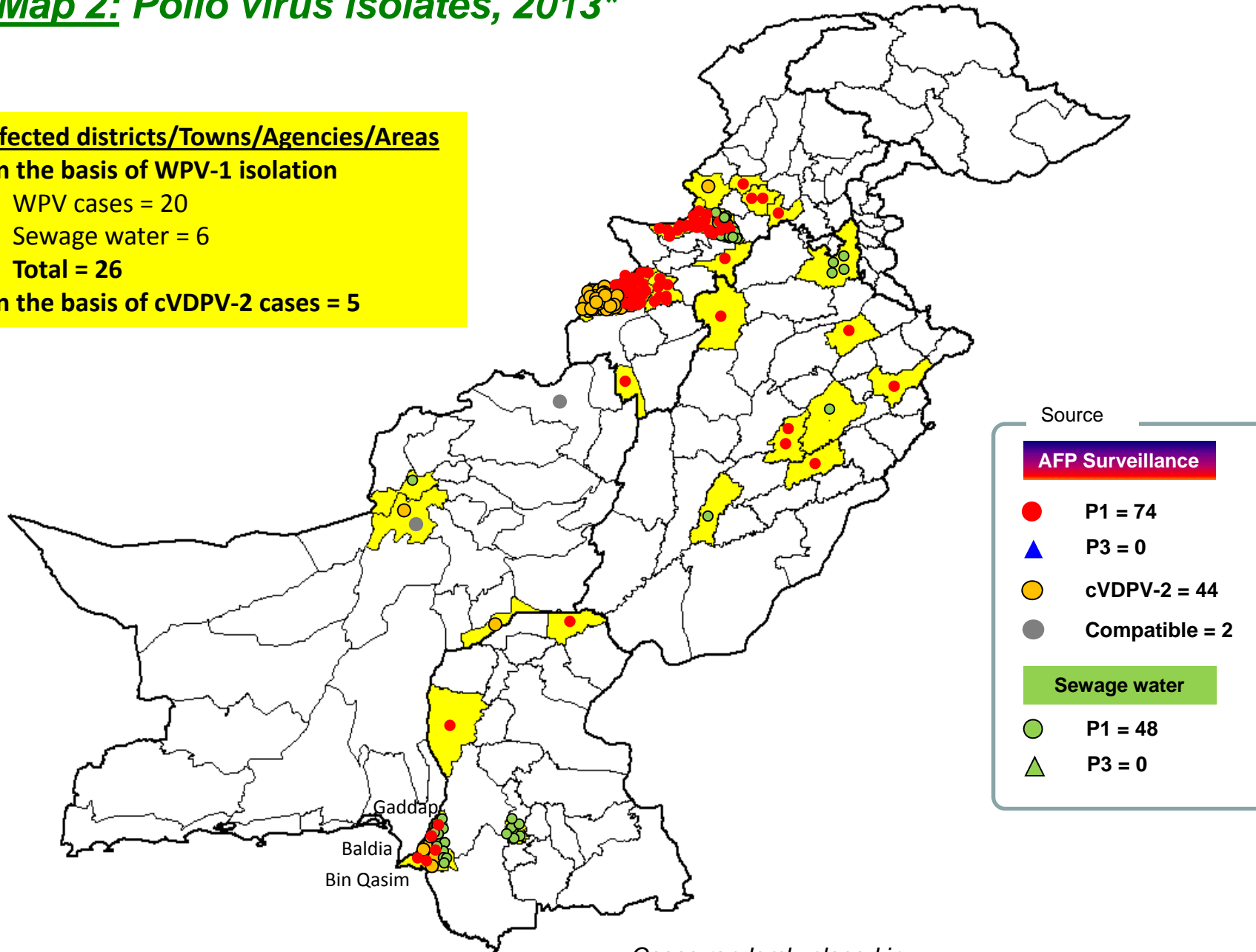
Map 2: Polio virus isolates, 2013*

Infected districts/Towns/Agencies/Areas

On the basis of WPV-1 isolation

- WPV cases = 20
- Sewage water = 6
- Total = 26

On the basis of cVDPV-2 cases = 5



Source

AFP Surveillance

- P1 = 74
- ▲ P3 = 0
- cVDPV-2 = 44
- Compatible = 2

Sewage water

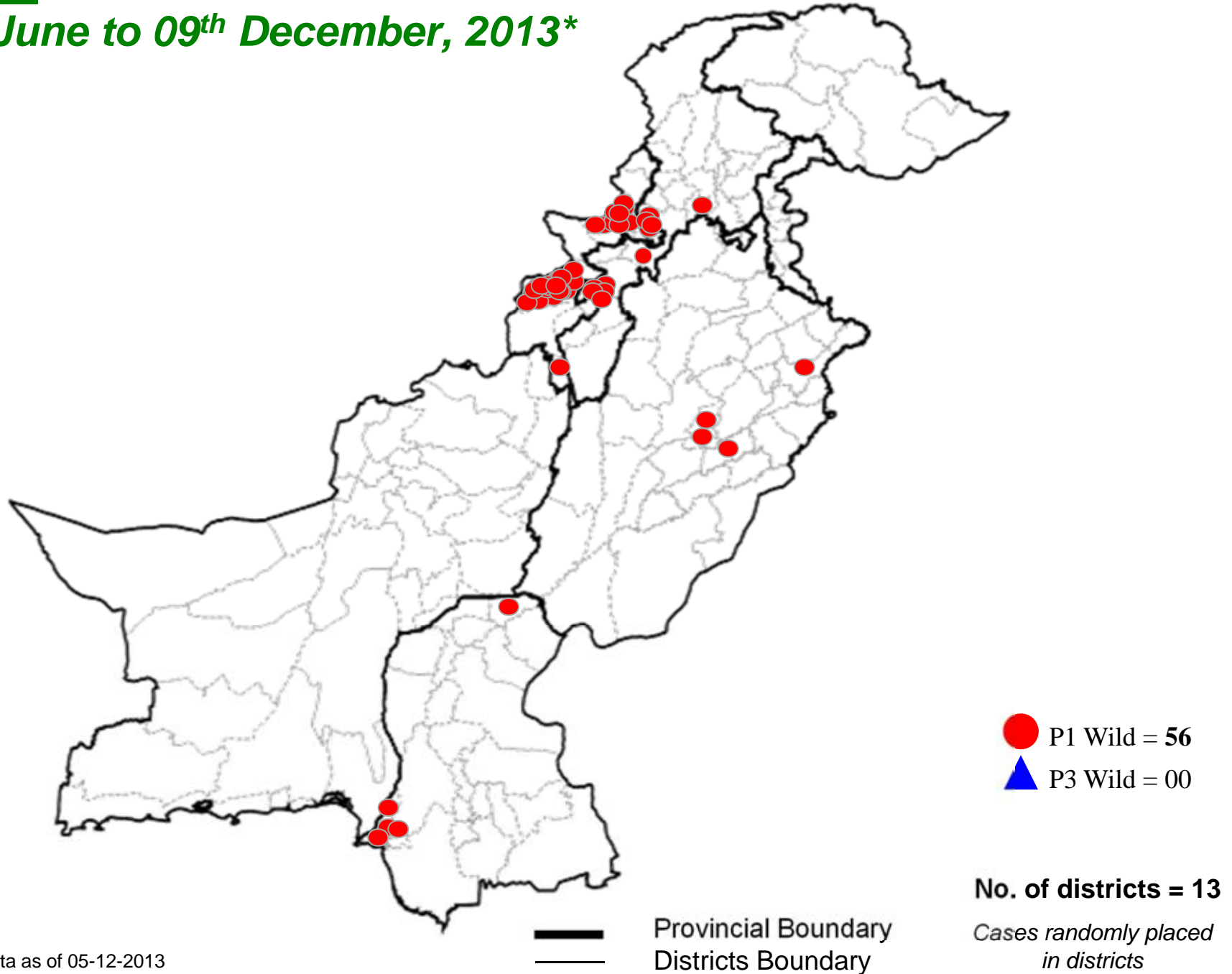
- P1 = 48
- ▲ P3 = 0

— Provincial Boundary
 — Districts Boundary

Cases randomly placed in districts

* Afp.rec Data as of 09-12-2013

Map 3: Wild Polio cases in the last 6 months from 10th June to 09th December, 2013*



* Afp.rec Data as of 05-12-2013

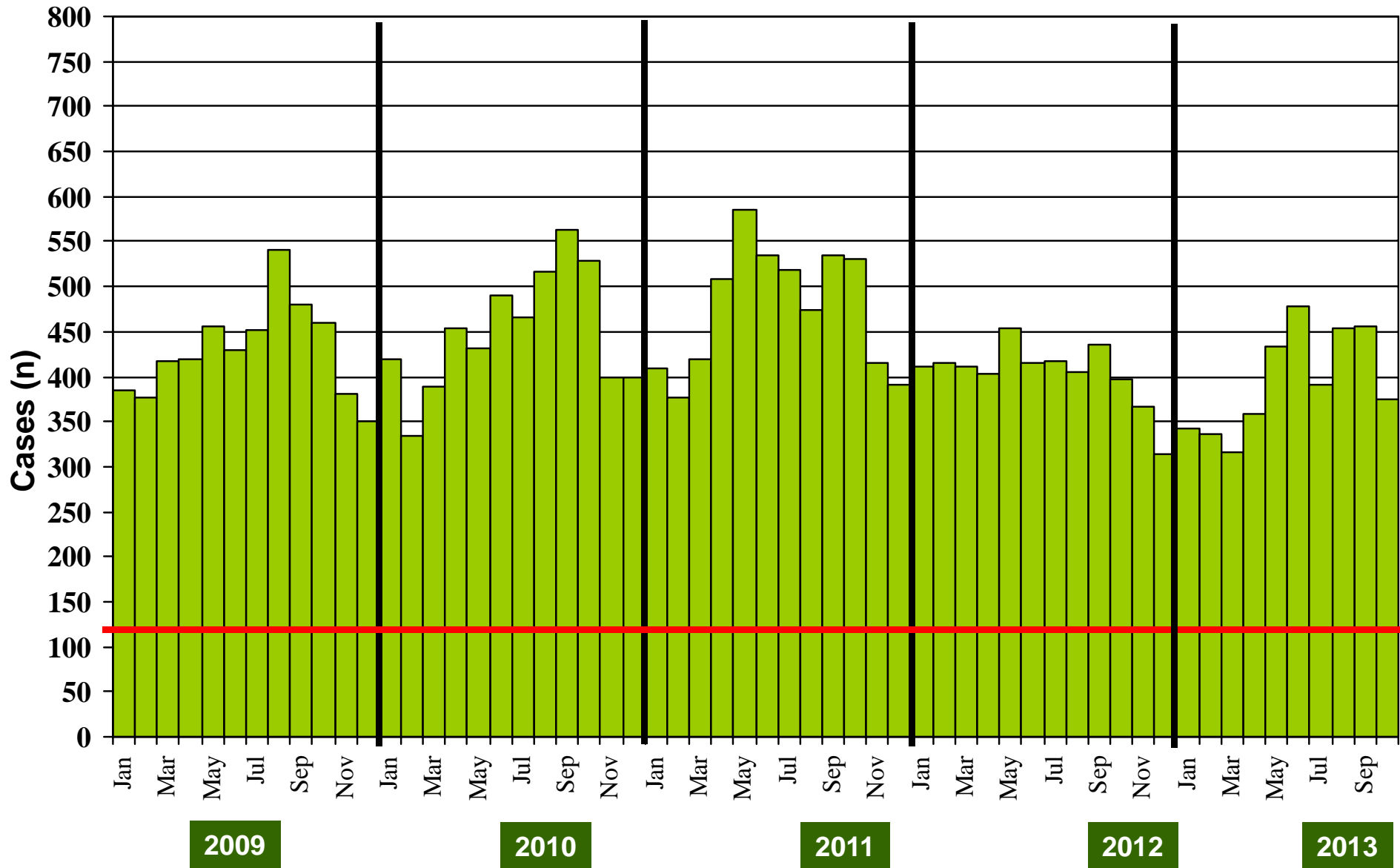
**Table 4: Distribution of AFP Cases By Week of Onset ^
Pakistan 2013* [Week number/Ending on]**

PROVINCE	W 34 24 Aug 2013	W 35 31 Aug 2013	W 36 07 Sep 2013	W 37 14 Sep 2013	W 38 21 Sep 2013	W 39 28 Sep 2013	W 40 05 Oct 2013	W 41 12 Oct 2013	W 42 19 Oct 2013	W 43 26 Oct 2013	W 44 02 Nov 2013	W 45 09 Nov 2013	W 46 16 Nov 2013	W 47 23 Nov 2013	W 48 30 Nov 2013
PUNJAB	52	43	49	49	55	54	48	26	25	44	45	40	32	35	9
SINDH	26	19	20	29	24	21	27	12	11	21	13	17	18	20	6
KP	19	26	22	15	18	17	26	18	13	22	25	16	17	12	7
FATA	12	8	13	18	11	16	17	11	6	14	10	3	11	5	1
BALUCHISTAN	9	2	1	5	6	4	5	4	2	6	4	5	3	8	1
AJK	2	2	0	1	0	0	0	0	0	1	1	2	0	1	1
GILGIT BILTISTAN	0	0	1	0	0	0	0	0	0	1	0	2	1	0	1
ISLAMABAD	0	1	0	0	0	0	1	0	0	0	0	0	0	0	0
PAKISTAN	120	101	106	117	114	112	124	71	57	109	98	85	82	81	26

* Afp.rec & Afplab.rec: Data as of 05-12-2013

^ MMWR Epidemiological Weeks

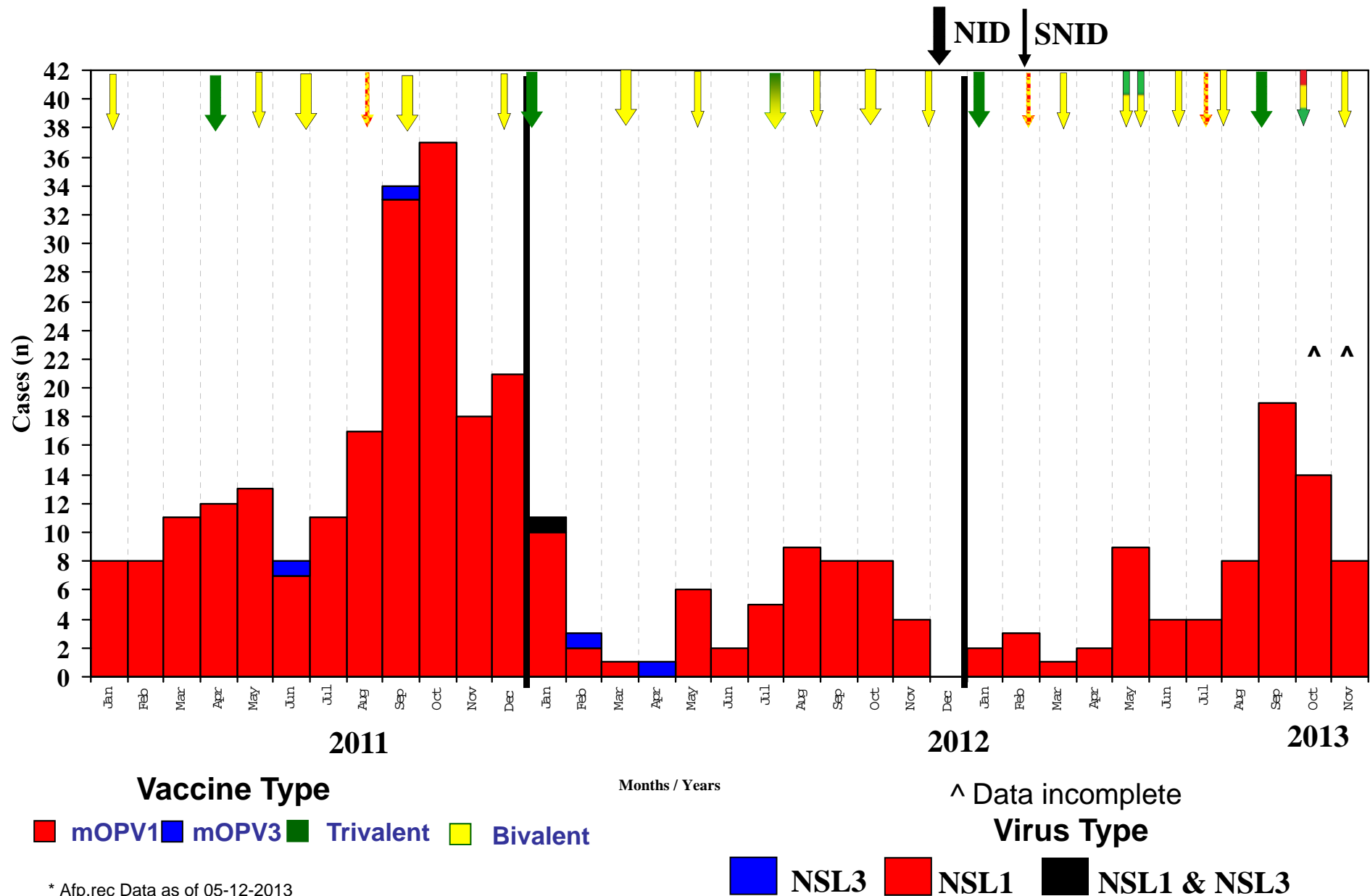
Graph 1: Distribution of AFP Cases by Month, Pakistan 2009-2013*



@ Non-polio AFP rate of 2/100,000 children < 15 years

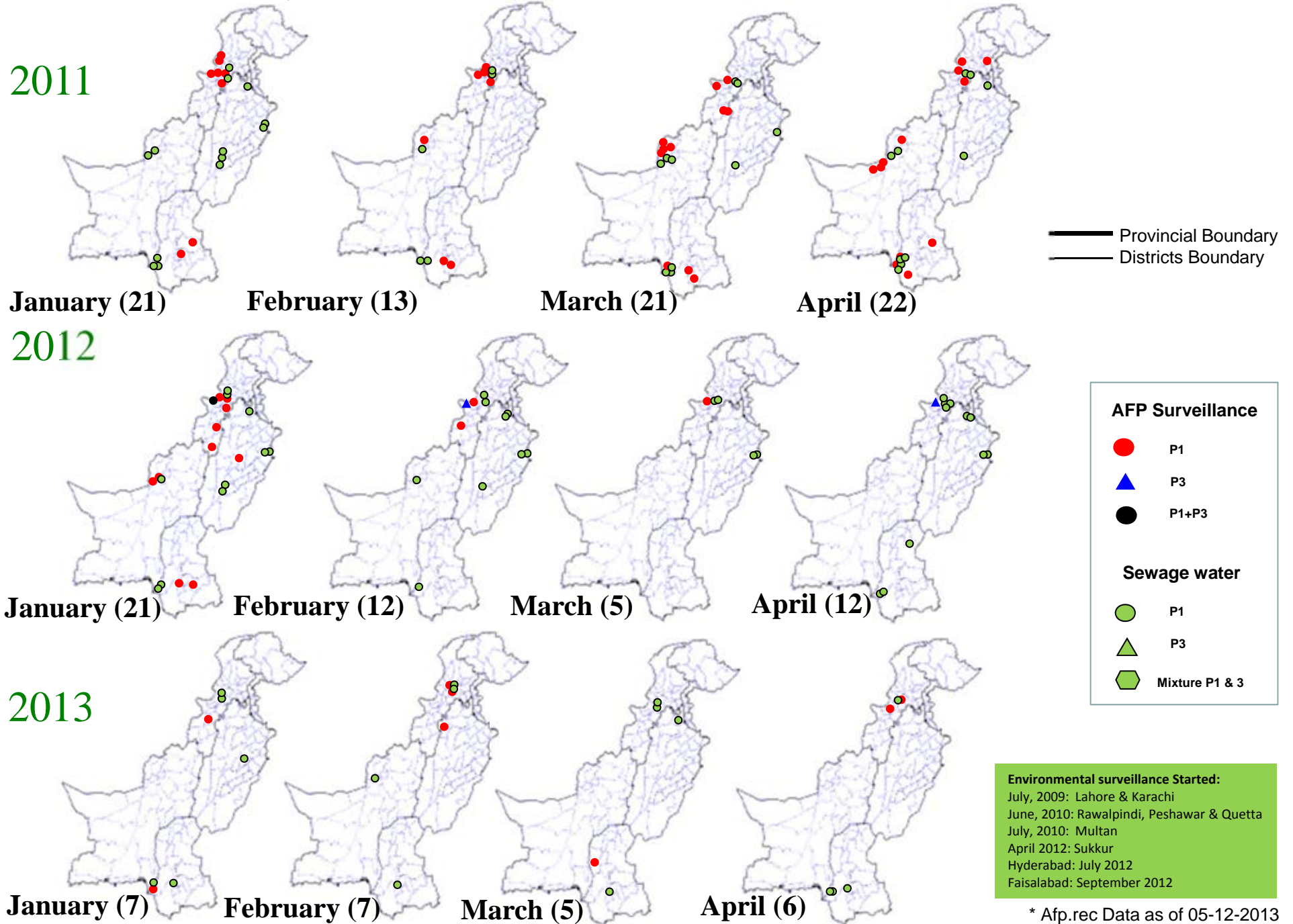
* Afp.rec Data as of 05-12-2013

Confirmed Polio Cases By Poliovirus Type, 2011-2013*



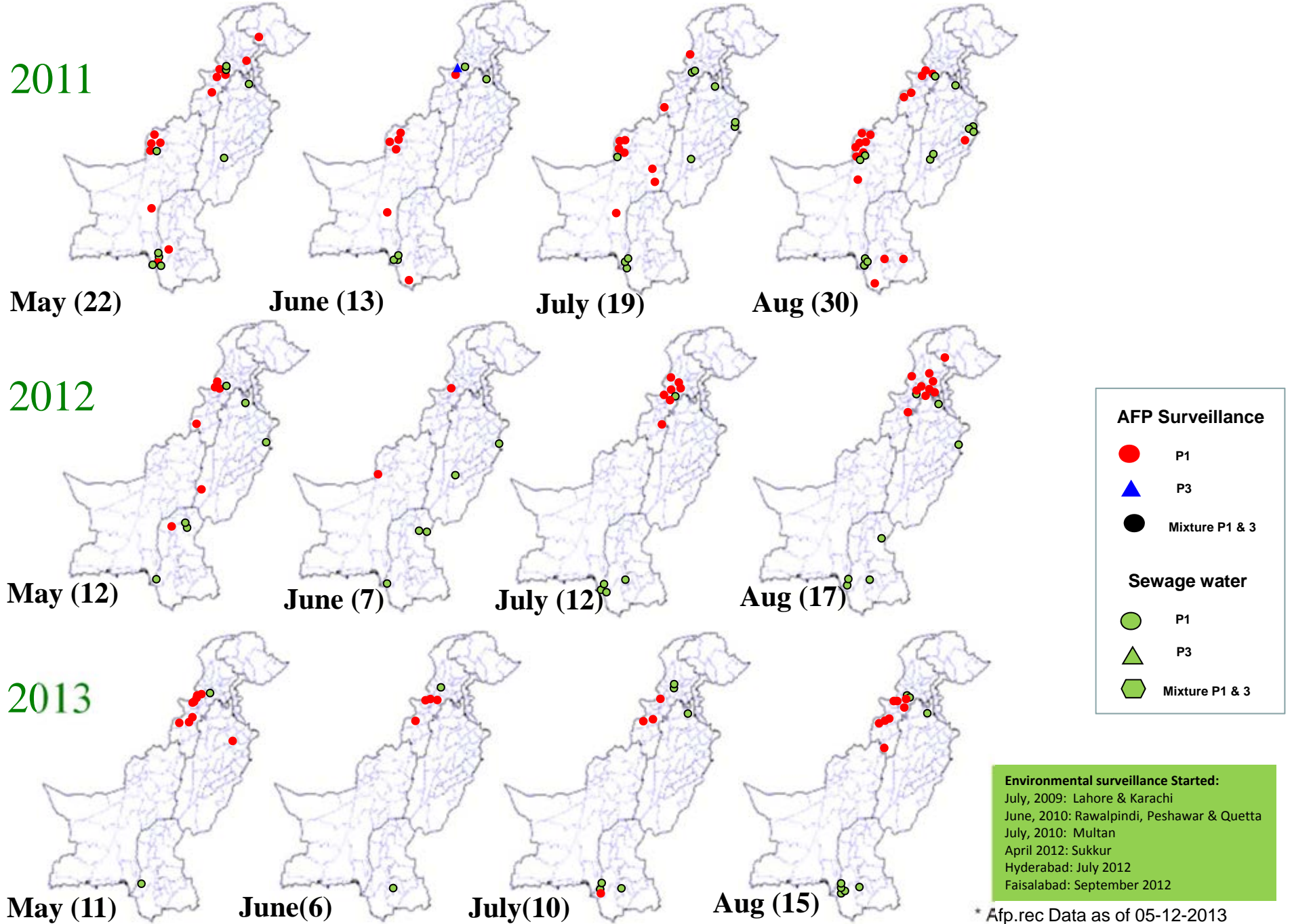
* Afp.rec Data as of 05-12-2013

Map 4: Monthly Comparison of P1 & P3 Polio Cases/Isolates 2011-2013*



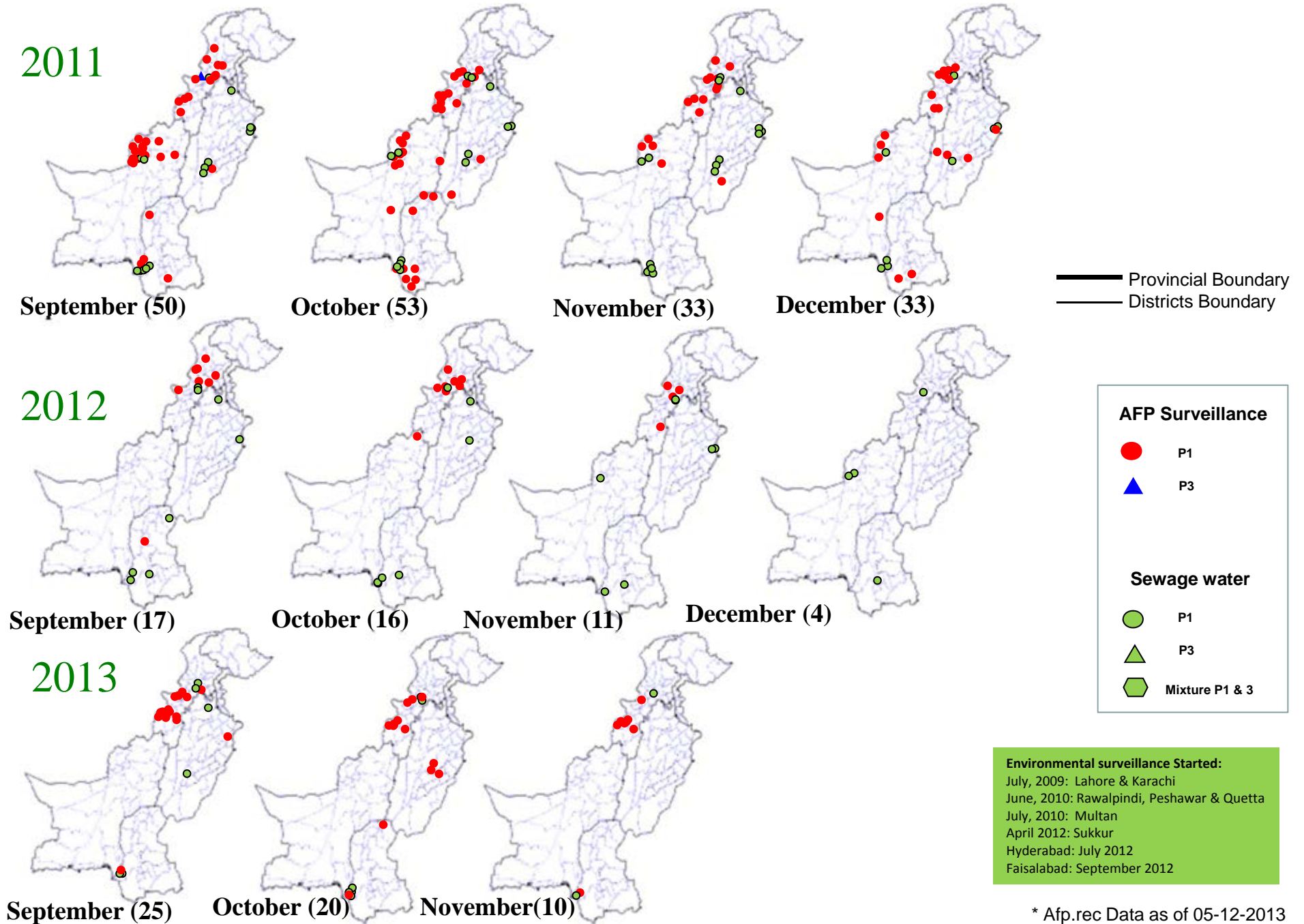
* Afp.rec Data as of 05-12-2013

Map 4.1: Monthly Comparison of P1 & P3 Polio Cases/Isolates 2011-2013*



* Afp.rec Data as of 05-12-2013

Map 4.2: Monthly Comparison of P1 & P3 Polio Cases/Isolates 2011-2013*

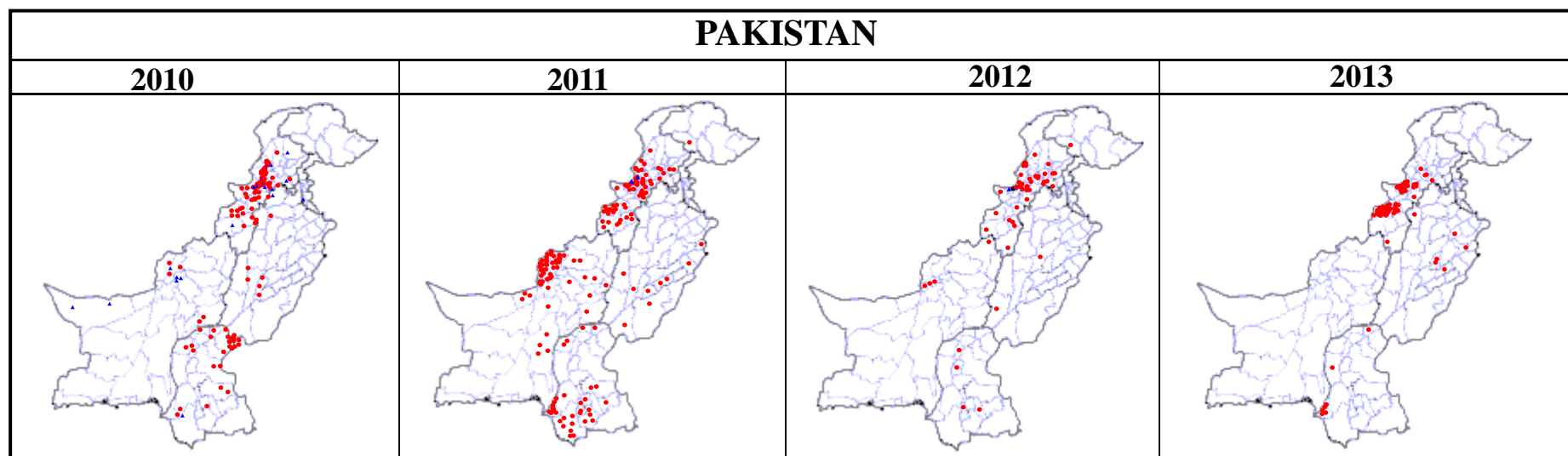


* Afp.rec Data as of 05-12-2013

Table 5: Polio Eradication Update, Pakistan 2010-2013*

Province/Region	Polio 1				Polio 3				Total Wild			
	2010	2011	2012	2013	2010	2011	2012	2013	2010	2011	2012	2013
PUNJAB	6	9	2	6	1	0	-	-	7	9	2	6
SINDH	26	33	4	7	1	0	-	-	27	33	4	7
KP	19	23	27	10	5	0	-	-	24	23	27	10
FATA^	63	57	17	51	11	2	2	-	74	59	20^	51
BALUCHISTAN	6	73	4	-	6	0	-	-	12	73	4	-
AJK	0	0	-	-	0	0	-	-	0	0	-	-
Gilgit-Baltistan	0	1	1	-	0	0	-	-	0	1	1	-
ISLAMABAD	0	0	-	-	0	0	-	-	0	0	-	-
PAKISTAN	120	196	55	74	24	2	2	-	144	198	58	74

^ FATA reported mixture of NSL1 & NSL3



* Afp.rec Data as of 05-12-2013

Table 6: Vaccination status of non polio AFP cases age 6-59 months 2010-2013*

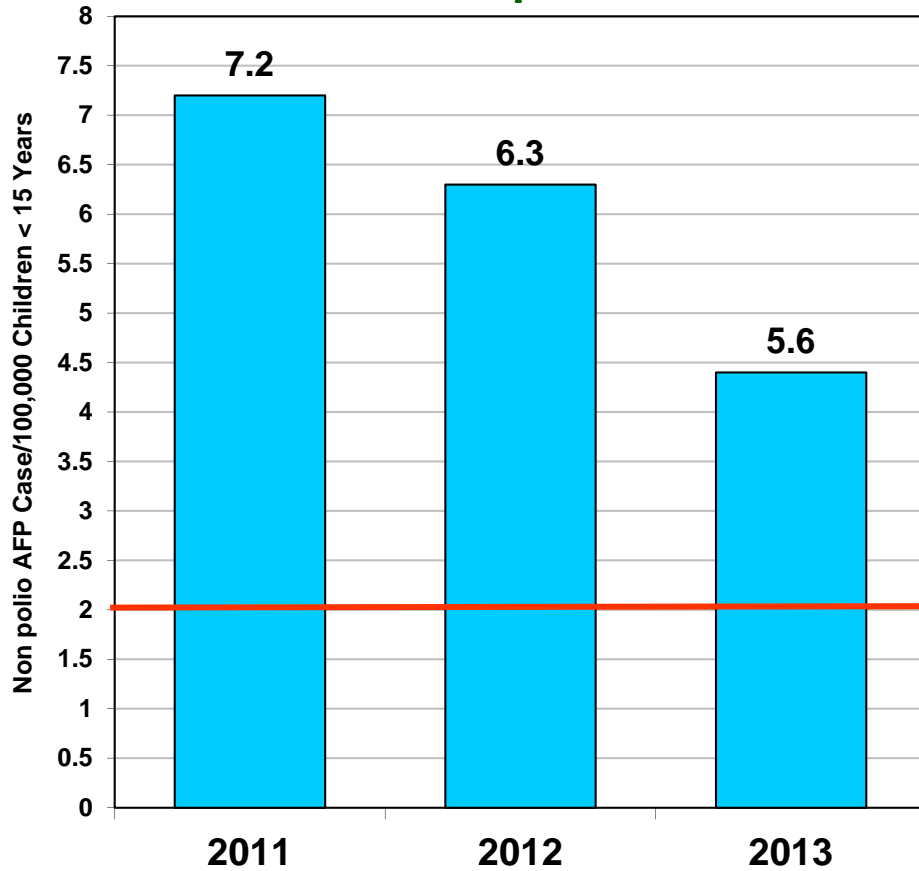
REGION	0 dose				1-2 doses				3 doses				4-6 doses				7+ doses			
	10	11	12	13	10	11	12	13	10	11	12	13	10	11	12	13	10	11	12	13
Central Punjab	0%	0%	0%	0%	1%	1%	0%	0%	1%	2%	0%	1%	7%	6%	4%	8%	91%	92%	95%	91%
North Punjab	0%	0%	0%	0%	0%	1%	0%	0%	2%	1%	0%	0%	6%	5%	4%	4%	91%	93%	96%	96%
South Punjab	0%	0%	0%	0%	1%	0%	0%	0%	0%	1%	0%	0%	5%	5%	4%	6%	94%	93%	96%	94%
PUNJAB	0%	0%	0%	0%	1%	1%	0%	0%	1%	1%	0%	0%	6%	5%	4%	6%	92%	93%	96%	93%
Karachi	2%	4%	1%	1%	0%	1%	1%	5%	3%	0%	2%	0%	7%	6%	6%	5%	88%	88%	90%	89%
North Sindh	0%	0%	0%	0%	1%	1%	0%	0%	0%	0%	1%	0%	4%	5%	4%	6%	95%	94%	94%	94%
South Sindh	0%	1%	0%	0%	1%	1%	1%	0%	1%	0%	2%	1%	9%	6%	4%	8%	89%	93%	93%	91%
SINDH	1%	1%	0%	0%	1%	1%	1%	1%	1%	0%	1%	0%	7%	6%	4%	6%	91%	92%	93%	92%
Central Khyber Pakhtunkhwa	1%	1%	2%	2%	0%	1%	1%	1%	1%	0%	0%	1%	2%	3%	2%	2%	97%	95%	95%	95%
North Khyber Pakhtunkhwa	2%	1%	2%	0%	1%	2%	2%	1%	2%	1%	2%	1%	6%	7%	9%	6%	89%	90%	85%	93%
South Khyber Pakhtunkhwa	3%	2%	2%	1%	3%	4%	1%	0%	3%	4%	1%	1%	14%	7%	9%	5%	76%	83%	87%	93%
Khyber Pakhtunkhwa	1%	1%	2%	1%	1%	2%	1%	1%	2%	1%	1%	1%	6%	5%	6%	4%	90%	91%	89%	94%
FATA	14%	14%	18%	40%	11%	10%	6%	6%	6%	5%	3%	6%	18%	11%	12%	6%	51%	61%	62%	42%
North Balochistan	12%	4%	12%	10%	0%	12%	10%	10%	4%	23%	3%	3%	12%	12%	17%	29%	72%	50%	57%	47%
Quetta Block	0%	31%	14%	8%	11%	10%	10%	8%	0%	3%	0%	0%	9%	14%	14%	22%	81%	43%	62%	62%
Rest of Balochistan	6%	7%	9%	5%	2%	2%	6%	3%	2%	5%	5%	5%	11%	10%	10%	23%	78%	76%	70%	62%
BALOCHISTAN	5%	16%	8%	6%	4%	6%	8%	6%	2%	6%	3%	4%	11%	12%	17%	20%	78%	60%	64%	63%
PAKISTAN	1%	2%	1%	3%	1%	1%	1%	1%	1%	1%	1%	1%	7%	6%	5%	6%	89%	89%	92%	89%

* Afp.rec Data as of 05-12-2013

Key Surveillance Indicators; 2011-2013*

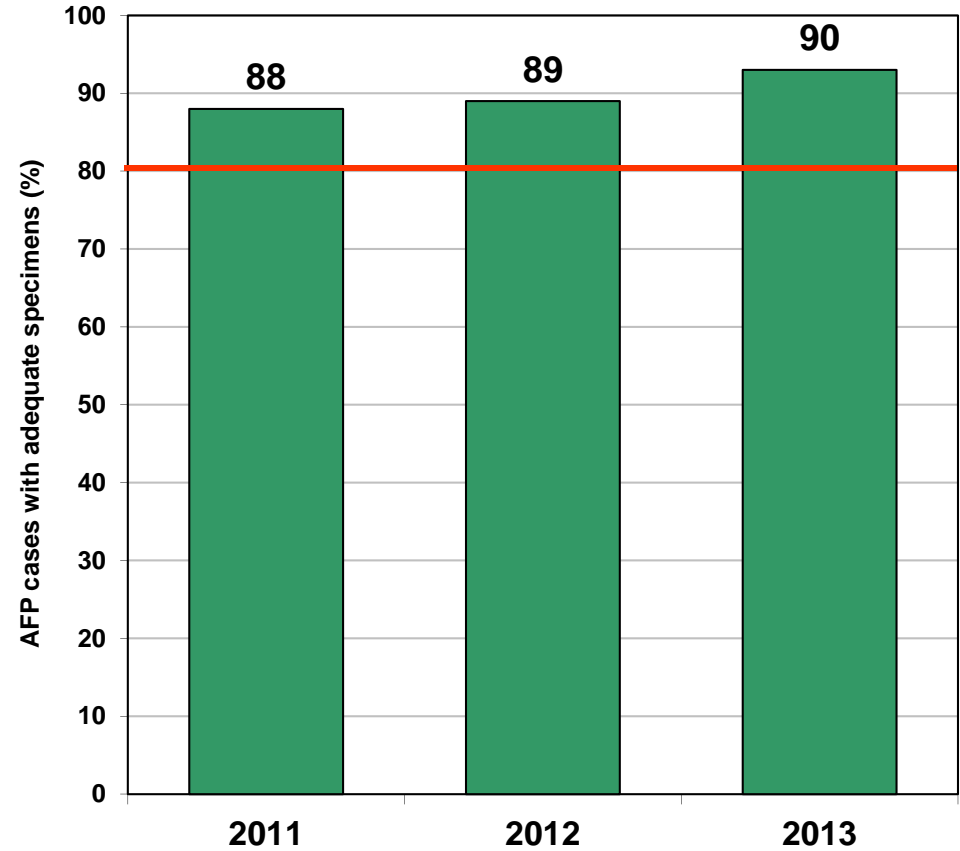
(Non polio AFP rate and % AFP cases with adequate specimens)

Graph 3



■ Non Polio AFP Rate

Graph 4



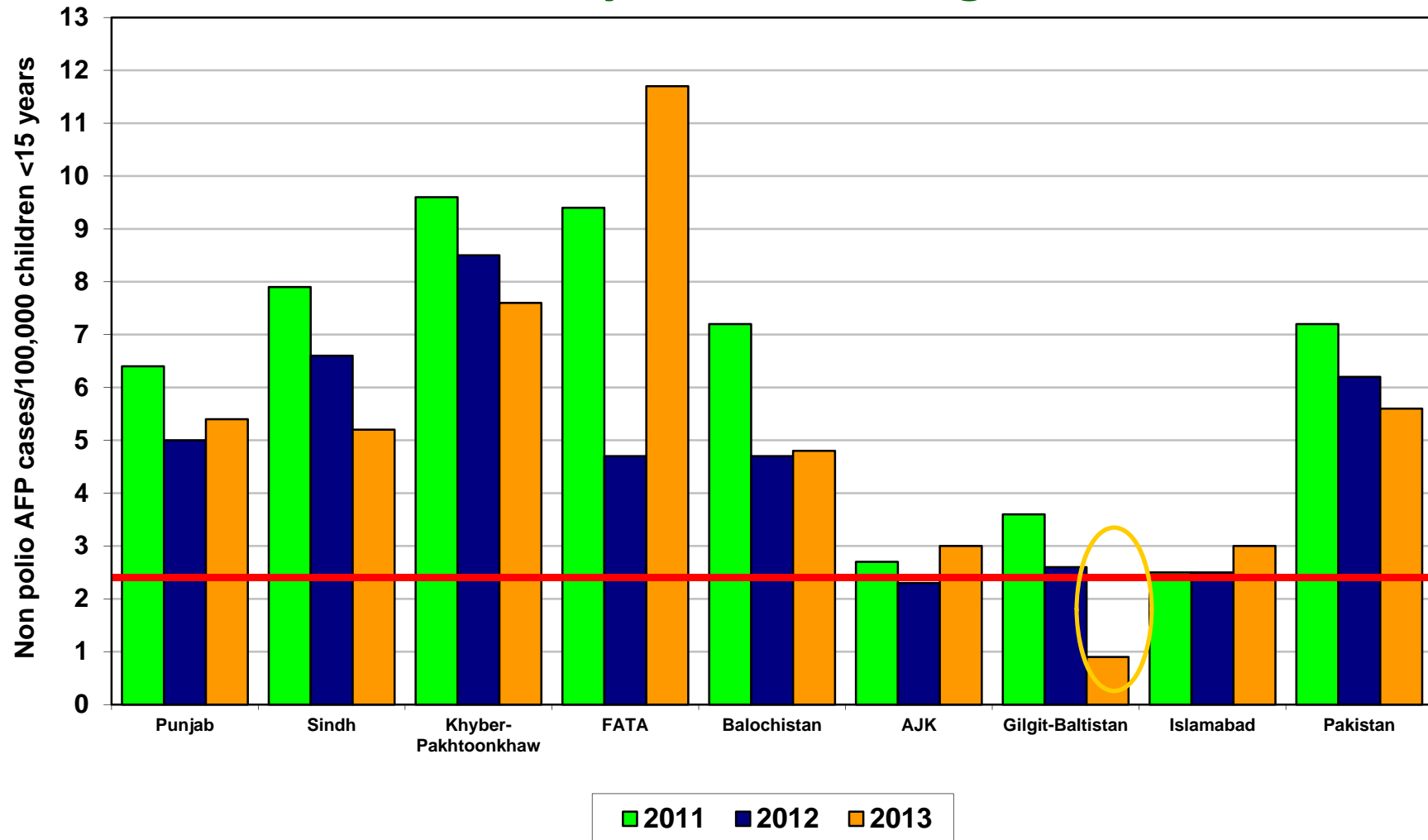
■ % AFP with Adequate Specimens

— Target

Non Polio AFP rate Up to Week No. 48 ended on 30th November, 2013

* Afp.rec Data as of 05-12-2013

Non Polio AFP Rate By Province/Regions, 2011-2013*

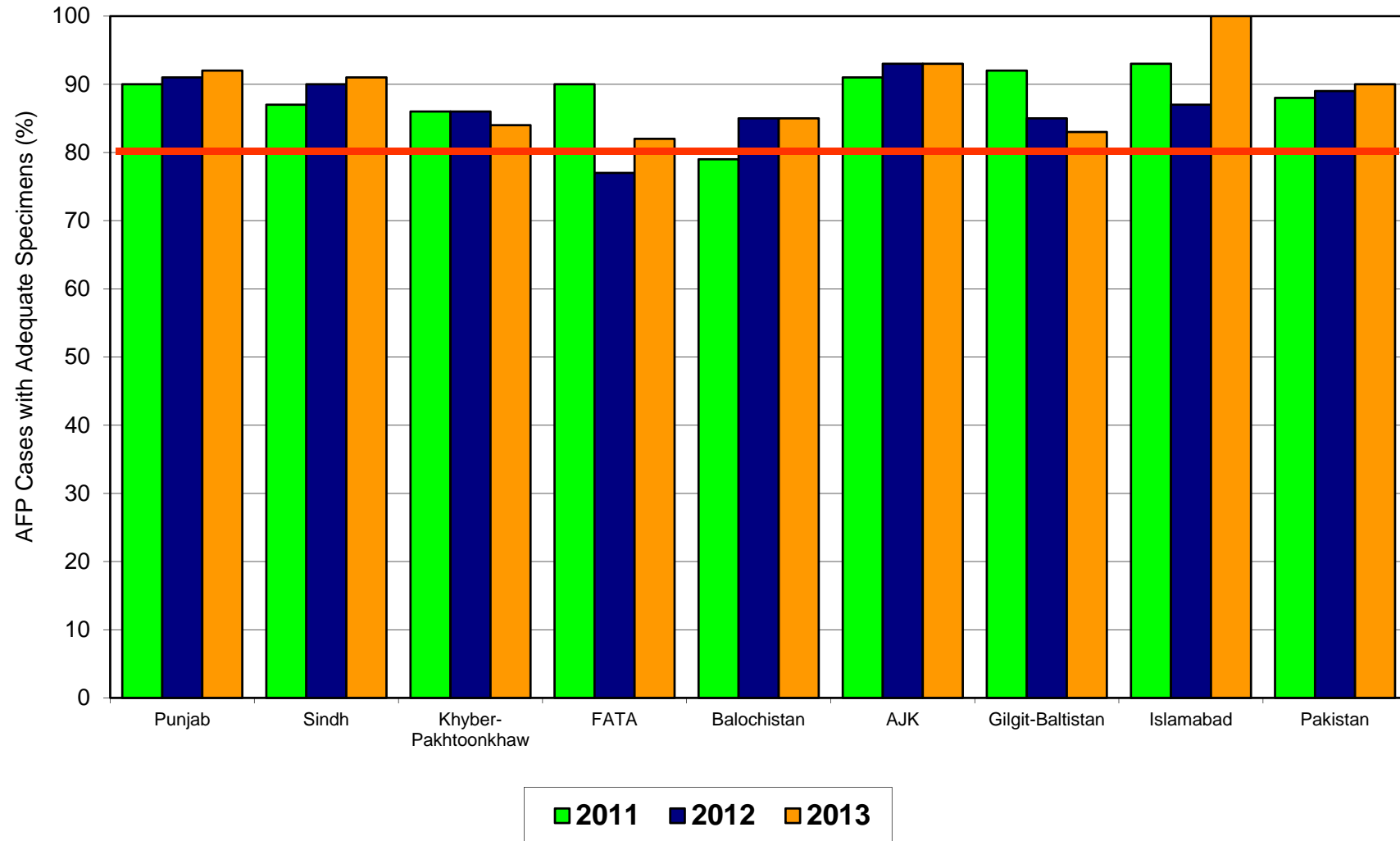


Non Polio AFP rate Up to Week No. 48 ended on 30th November, 2013

Target Non-Polio AFP Rate 2/ 100000 < 15 years of the age

* Afp.rec Data as of 05-12-2013

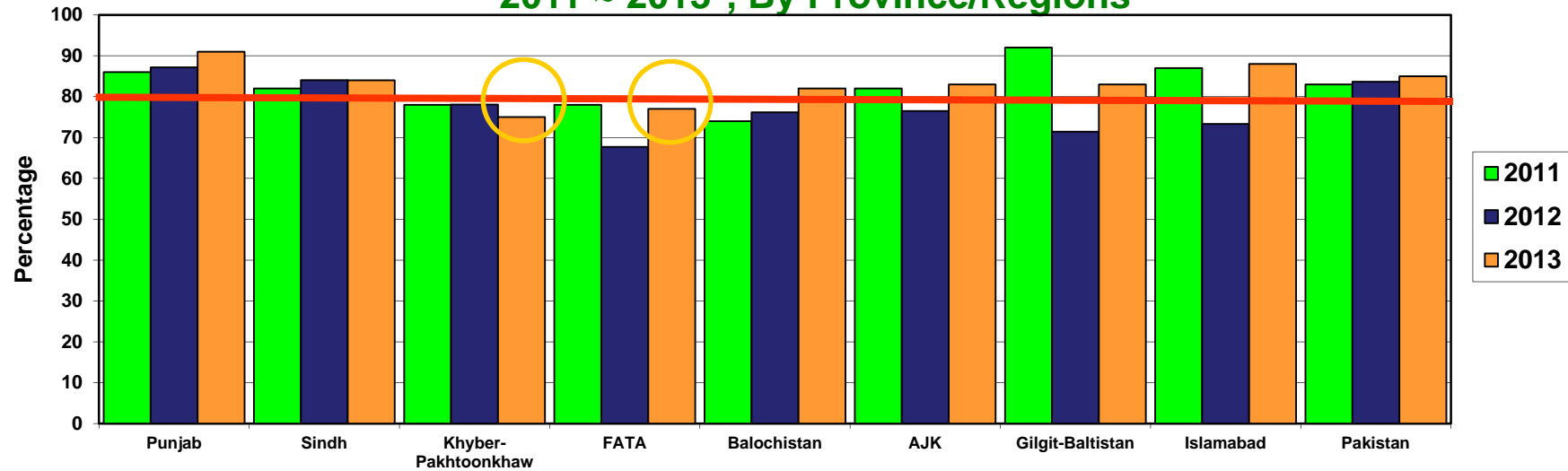
Percent AFP Cases with Adequate Specimens By Province/Regions, 2011-2013*



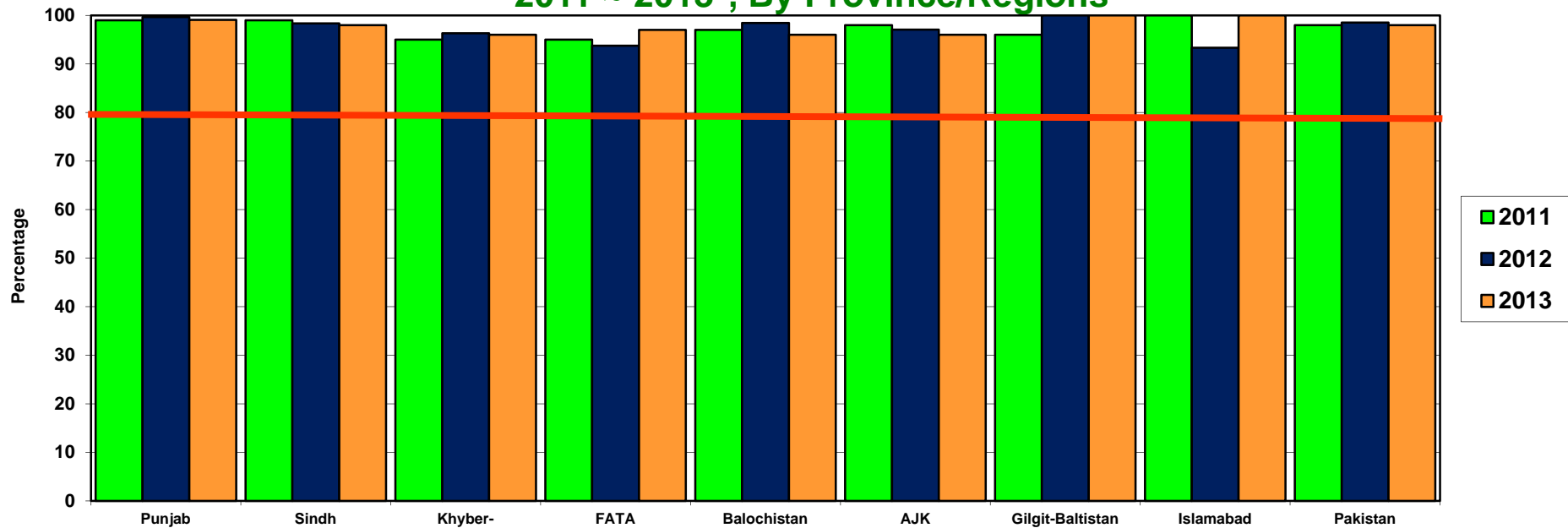
* Afp.rec Data as of 05-12-2013

Target Adequate Sample cases = 80%

**Graph 5: Percent AFP Cases Notified within 07 days of paralysis onset
2011 ~ 2013*, By Province/Regions**



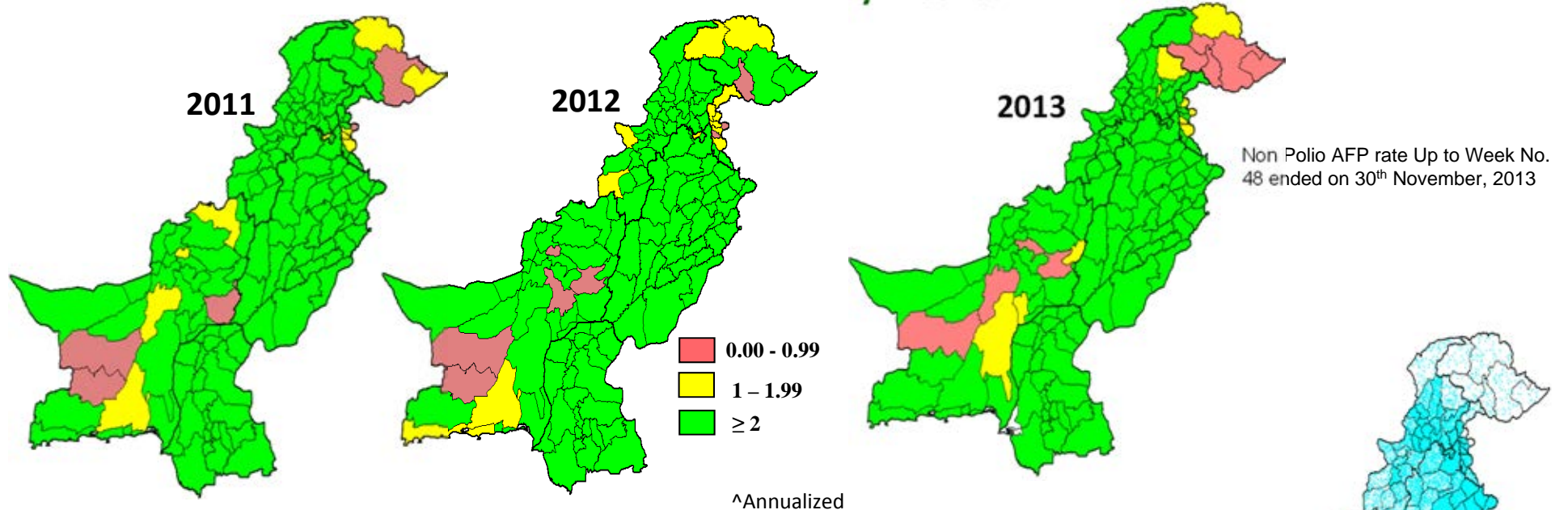
**Graph 6: Percent AFP Cases Investigated within 48 hours of notification
2011 ~ 2013*, By Province/Regions**



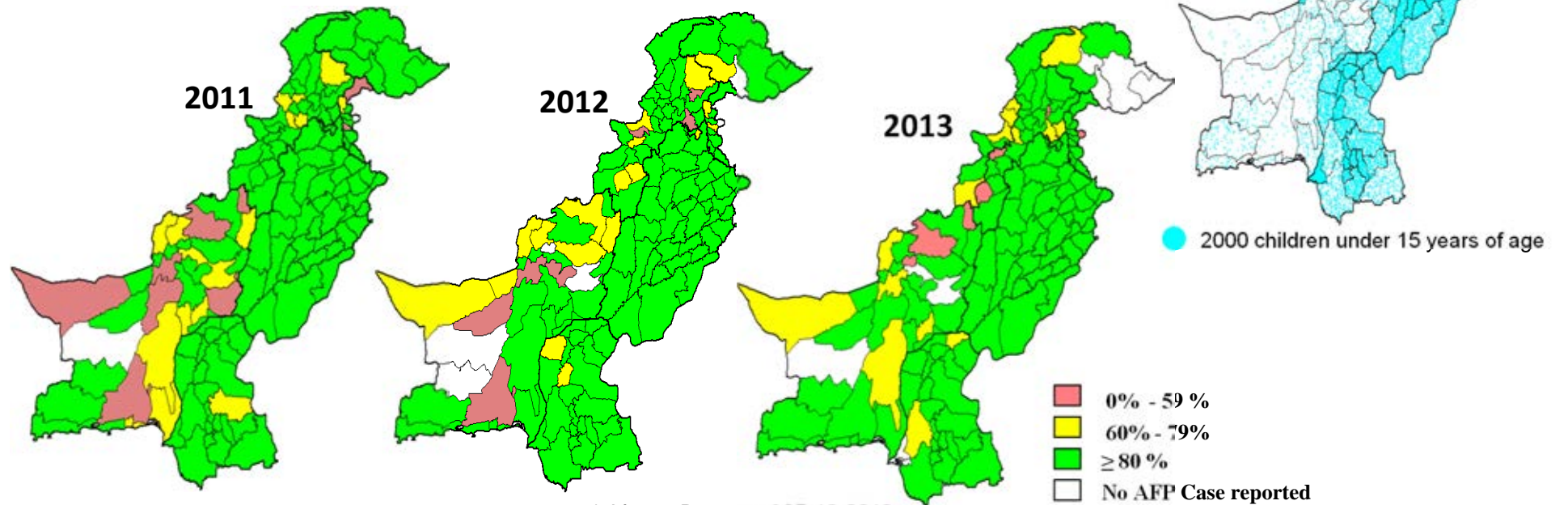
* Afp.rec Data as of 05-12-2013

— Target

Non-Polio[^] AFP Rate by District



Percent AFP Cases with Adequate Specimens, by District



* Afp.rec Data as of 05-12-2013

Table 7: AFP CASES PENDING FOR CLASSIFICATION WITH DATE OF ONSET MORE THAN 90 DAYS* 2013 (1/4)

S. No	DISTRICT	TEHSIL	EPID	SEX	AGE	DONSET	DOSE€	DSTOOL1	DSTOOL2	LAB	FEVER	ASVM	PROG	FUP	PEND (DAYS)
1	KARAK	KARAK	KP/51/13/005	F	13	01-01-13	7+	15-02-13	17-02-13	EV	N	Y	Y	Y	338
2	MARDAN	MARDAN	KP/40/13/007	M	29	17-01-13	7+	06-02-13	07-02-13	EV	Y	Y	Y	Y	322
3	PESHAWAR	PESHAWAR	KP/30/13/008	M	96	15-01-13	7+	26-02-13	27-02-13	NVI	N	N	Y	Y	324
4	SWAT	SWAT	KP/24/13/004	M	120	20-02-13	7+	Child Died Before Stool Collection			Y	N	Y	DIED	288
5	WAZIR-N	MIRAN SHAH	FT/64/13/001	M	96	08-02-13	6	13-02-13		NVI	Y	N	Y	DIED	300
6	BAHAWALPUR	HASILPUR	PB/71/13/029	F	18	27-06-13	7+	24-07-13	25-07-13	EV	Y	Y	Y	Y	161
7	BAHWLNAGAR	MINCHINABAD	PB/73/13/038	F	120	08-06-13	7+	29-06-13	01-07-13	EV	N	N	Y	Y	180
8	BAHWLNAGAR	FORTABBAS	PB/73/13/043	M	102	23-06-13	7+	Child Died Before Stool Collection			Y	N	Y	DIED	165
9	CHINIOT	BHOWANA	PB/54/13/026	M	144	01-09-13	3	19-10-13	20-10-13	NVI	Y	N	Y	Y	95
10	FAISALABAD	TANGLIAN WALA	PB/51/13/049	F	18	22-05-13	7+	27-06-13	28-06-13	NVI	Y	Y	UK	Y	197
11	FAISALABAD	FAISALABAD CITY	PB/51/13/061	F	144	01-08-13	7+	Child Died Before Stool Collection			N	N	Y	DIED	126
12	FAISALABAD	FAISALABAD SADAR	PB/51/13/066	M	3	17-08-13	3	01-09-13	03-09-13	NVI	Y	Y	Y	DIED	110
13	FAISALABAD	FAISALABAD CITY	PB/51/13/086	F	120	01-08-13	7+	Late Notified			Y	Y	Y	Y	126
14	GUJRANWALA	KHIALI SHAHPUR	PB/21/13/055	M	96	14-06-13	7+	03-07-13	05-07-13	NVI	Y	Y	Y	Y	174
15	GUJRANWALA	KAMOKE	PB/21/13/090	M	96	25-06-13	7+	Late Notified			N	Y	Y	Y	163
16	JHELUM	SOHAWA	PB/14/13/026	M	108	19-08-13	7+	Child Died Before Stool Collection			N	N	Y	DIED	108
17	KHANEWAL	KABIRWALA	PB/62/13/042	F	108	28-06-13	7+	07-07-13		NVI	Y	N	Y	DIED	160
18	KHANEWAL	JAHANIAN	PB/62/13/047	M	120	29-06-13	7+	29-07-13	31-07-13	NVI	Y	N	Y	Y	159
19	KHANEWAL	KABIRWALA	PB/62/13/049	M	120	06-07-13	7+	28-08-13	29-08-13	NVI	Y	Y	Y	Y	152
20	KHUSHAB	KHUSHAB	PB/42/13/014	F	42	25-08-13	7+	07-09-13	10-09-13	EV	Y	N	Y	Y	102
21	LAHORE	NISHTAR TOWN	PB/31/13/097	F	24	10-08-13	7+	27-09-13	28-09-13	EV	N	Y	Y	Y	117
22	LAYYAH	LAYYAH	PB/84/13/024	F	72	28-07-13	7+	Child Died Before Stool Collection			N	N	Y	DIED	130
23	LODHRAN	LODHRAN	PB/64/13/034	M	95	04-07-13	7+	18-07-13	25-07-13	NVI	Y	N	Y	Y	154
24	LODHRAN	LODHRAN	PB/64/13/035	M	84	22-05-13	7+	14-07-13	15-07-13	NVI	N	N	Y	Y	197
25	MULTAN	JALALPUR PIRWALA	PB/61/13/046	M	76	18-05-13	7+	17-06-13	19-06-13	NVI	Y	Y	Y	Y	201
26	MULTAN	JALALPUR PIRWALA	PB/61/13/073	M	4	01-08-13	6	06-09-13	08-09-13	NVI	Y	N	Y	Y	126
27	MULTAN	MULTAN SADDAR	PB/61/13/080	F	119	15-08-13	7+	27-09-13	29-09-13	NVI	N	N	Y	Y	112
28	MUZFARGARH	ALIPUR	PB/83/13/076	M	2	08-07-13	1	10-08-13	12-08-13	NVI	N	Y	Y	Y	150
29	MUZFARGARH	KOT ADDU	PB/83/13/081	M	25	13-07-13	7+	22-08-13	24-08-13	NVI	Y	Y	Y	Y	145
30	MUZFARGARH	MUZFARGARH	PB/83/13/096	M	14	17-08-13	7+	04-10-13	05-10-13	VACC	Y	Y	Y	Y	110
31	MUZFARGARH	ALIPUR	PB/83/13/098	M	4	25-08-13	3	08-10-13	09-10-13	EV	Y	Y	Y	Y	102
32	NANKANASAHIB	NANKANASAHIB	PB/35/13/027	F	50	07-08-13	7+	28-09-13	29-09-13	NVI	N	N	Y	Y	120
33	OKARA	DEPALPUR	PB/34/13/031	M	24	27-05-13	7+	07-07-13	08-07-13	EV	N	Y	Y	Y	192
34	PAKPATTEN	PAKPATTAN	PB/66/13/018	M	156	25-07-13	7+	15-08-13	16-08-13	NVI	Y	Y	Y	Y	133
35	PAKPATTEN	PAKPATTAN	PB/66/13/021	M	60	14-06-13	7+	Late Notified			Y	Y	Y	Y	174
36	RAJANPUR	RAJANPUR	PB/82/13/036	F	6	03-06-13	5	07-07-13	08-07-13	EV	Y	Y	Y	Y	185
37	RAJANPUR	RAJANPUR	PB/82/13/046	F	12	07-08-13	6	29-08-13	30-08-13	NVI	N	N	Y	Y	120
38	RAJANPUR	JAMPUR	PB/82/13/059	M	9	25-08-13	6	10-10-13	13-10-13	NVI	Y	Y	Y	Y	102
39	RAWALPINDI	RAWALPINDI	PB/11/13/028	M	132	13-05-13	7+	03-06-13	05-06-13	NVI	N	N	Y	Y	206
40	RAWALPINDI	MURREE	PB/11/13/041	M	177	05-07-13	7+	23-07-13	24-07-13	NVI	N	N	Y	Y	153
41	RAWALPINDI	RAWALPINDI	PB/11/13/047	M	87	09-08-13	7+	Child Died Before Stool Collection			Y	N	Y	DIED	118
42	RAWALPINDI	TAXILA	PB/11/13/048	M	27	13-08-13	7+					N	N	Y	DIED
43	RAWALPINDI	RAWALPINDI	PB/11/13/050	F	102	15-08-13	7+	24-08-13		NVI	N	N	Y	DIED	112
44	RAWALPINDI	TAXILA	PB/11/13/058	M	121	22-08-13	7+	02-10-13	04-10-13	NVI	N	N	Y	Y	105

€ Based on recall of parents

* Afp.rec Data as of 05-12-2013

60 days Follow-up not done

FUP = Residual Weakness at 60 days follow up.

Table 7.1: AFP CASES PENDING FOR CLASSIFICATION WITH DATE OF ONSET MORE THAN 90 DAYS* 2013 (2/4)

S. No	DISTRICT	TEHSIL	EPID	SEX	AGE	DONSET	DOSESE	DSTOOL1	DSTOOL2	LAB	FEVER	ASVM	PROG	FUP	PEND (DAYS)	
45	SAHIWAL	SAHIWAL	PB/65/13/024	M	120	12-06-13	7+	22-07-13	23-07-13	NVI	Y	Y	Y	Y	176	
46	SAHIWAL	CHICHAWATNI	PB/65/13/025	F	6	25-06-13	5	30-07-13	01-08-13	NVI	Y	N	Y	Y	163	
47	SHEIKUPURA	FEROZEWALA	PB/33/13/030	M	144	22-05-13	7+	14-06-13	15-06-13	NVI	N	Y	Y	Y	197	
48	SHEIKUPURA	MURIDKE	PB/33/13/038	M	84	03-07-13	7+	11-07-13		NVI	Y	N	Y	DIED	155	
49	TTSINGH	GOJRA	PB/52/13/032	M	2	24-06-13	3	25-07-13	27-07-13	EV	Y	N	Y	Y	164	
50	VEHARI	VEHARI	PB/63/13/055	M	84	11-08-13	7+	14-08-13		NVI	N	N	Y	DIED	116	
51	GHOTKI	KHANGARH	SD/42/13/052	M	72	21-07-13	7+	30-08-13	31-08-13	NVI	Y	N	Y	Y	137	
52	HYDERABAD	HYDERABAD RURAL	SD/21/13/006	M	84	01-04-13	7+	Child Died Before Stool Collection			Y	N	Y	DIED	248	
53	JACOBABAD	THUL	SD/53/13/013	M	156	16-05-13	7+	11-06-13	15-06-13	NVI	Y	Y	Y	Y	203	
54	JACOBABAD	THUL	SD/53/13/017	M	10	26-06-13	7+	26-07-13	27-07-13	EV	Y	Y	Y	Y	162	
55	JAMSHORO	T.B.KHAN	SD/25/13/009	F	18	03-05-13	7+	25-05-13	12-06-13	NVI	N	N	Y	Y	216	
56	KAMBAR	WARAH	SD/55/13/006	M	96	01-01-13	7+	Late Notified			N	Y	Y	Y	338	
57	KASHMORE	KANDHKOT	SD/54/13/002	M	54	27-05-13	7+				N	N	Y	Y	LOST	192
58	KHIBALDIA	BALDIA	SD/61/13/005	F	36	18-06-13	4	Child Died Before Stool Collection			N	N	Y	DIED	170	
59	KHIGADAP	GADAP	SD/63/13/010	F	42	02-06-13	7+				Y	N	Y	DIED	186	
60	KHIGADAP	GADAP	SD/63/13/021	F	10	23-08-13	1	23-09-13	24-09-13	NVI	Y	Y	Y	Y	104	
61	KHIJAMSHEED	JAMSHEED	SD/66/13/004	F	60	01-05-13	7+	Child Died Before Stool Collection			Y	N	Y	DIED	218	
62	KHIKAMARI	KAMARI	SD/67/13/005	M	108	25-06-13	7+	07-07-13	15-07-13	NVI	Y	Y	Y	Y	163	
63	KHISADDAR	SADDAR	SD/77/13/004	F	38	05-04-13	7+	10-05-13	11-05-13	NVI	N	N	Y	Y	244	
64	NFEROZ	BHIRIA	SD/45/13/003	F	144	05-02-13	7+	Child Died Before Stool Collection			Y	Y	Y	Y	DIED	303
65	NFEROZ	MORO	SD/45/13/013	F	54	10-05-13	7+	01-06-13	02-06-13	NVI	N	Y	Y	Y	209	
66	SANGHAR	KHIPRO	SD/32/13/005	M	144	05-03-13	7+	Late Notified			N	N	Y	Y	275	
67	T.ALLAHYAR	TANDO ALLAHYAR	SD/27/13/009	M	4	28-05-13	4	24-06-13	25-06-13	NVI	Y	Y	Y	Y	191	
68	T.ALLAHYAR	J.MUREE	SD/27/13/010	M	72	13-06-13	7+	Child Died Before Stool Collection			Y	Y	Y	DIED	175	
69	T.ALLAHYAR	J.MUREE	SD/27/13/015	M	60	21-08-13	7+	03-09-13	05-09-13	NVI	N	Y	Y	Y	106	
70	THATTA	THATTA	SD/22/13/032	M	72	06-06-13	7+	15-07-13	16-07-13	NVI	Y	Y	Y	Y	182	
71	ABOTABAD	HAVALIAN	KP/10/13/017	M	96	23-07-13	7+	14-08-13	15-08-13	NVI	Y	N	Y	Y	135	
72	ABOTABAD	ABBOTABAD	KP/10/13/021	M	49	27-07-13	7+	16-08-13	17-08-13	EV	N	N	N		131	
73	ABOTABAD	HAVALIAN	KP/10/13/027	F	72	18-08-13	7+	Late Notified			N	Y	Y		109	
74	BANNU	BANNU	KP/61/13/010	M	53	30-04-13	7+				Y	N	N	Y	219	
75	BUNIR	DAGGAR	KP/22/13/008	M	35	12-03-13	7+	01-04-13	02-04-13	NVI	Y	Y	Y	Y	268	
76	BUNIR	DAGGAR	KP/22/13/007	M	132	28-02-13	7+	30-03-13	31-03-13	NVI	N	N	Y	Y	280	
77	BUNIR	DAGGAR	KP/22/13/015	M	72	01-01-13	7+	Late Notified			Y	Y	Y	Y	338	
78	CHARSADA	CHARSADA	KP/31/13/049	F	72	10-08-13	7+	24-08-13	27-08-13	NVI	Y	Y	Y		117	
79	CHARSADA	SHABQADAR	KP/31/13/052	F	39	27-08-13	7+	10-09-13	11-09-13	NVI	Y	Y	Y		100	
80	CHARSADA	CHARSADA	KP/31/13/053	M	18	03-08-13	7+	03-09-13	04-09-13	NVI	Y	Y	Y		124	
81	DIKHAN	KULACHI	KP/60/13/013	F	18	22-04-13	5	16-06-13	17-06-13	VACC	N	Y	Y	Y	227	
82	DIKHAN	DIKHAN	KP/60/13/014	M	54	17-06-13	7+	20-06-13		NVI	Y	Y	Y	DIED	171	
83	DIRLOWER	SAMAR BAGH	KP/23/13/015	F	13	30-01-13	7+	Late Notified			Y	Y	Y	Y	309	
84	DIRLOWER	SAMAR BAGH	KP/23/13/033	F	96	25-07-13	7+	05-09-13	07-09-13	NVI	Y	Y	Y	Y	133	
85	DIRLOWER	TIMERGARA	KP/23/13/034	M	30	08-08-13	7+	16-09-13	17-09-13	NVI	Y	Y	Y	Y	119	
86	DIRUPPER	DIR	KP/25/13/006	F	21	25-07-13	7+	08-08-13	10-08-13	EV	UK	Y	Y		133	
87	HANGU	HANGU	KP/54/13/005	M	12	21-06-13	7+	08-07-13	09-07-13	EV	Y	Y	Y		167	
88	HANGU	HANGU	KP/54/13/004	F	30	05-06-13	7+	05-07-13	06-07-13	EV	Y	N	Y	Y	183	

€ Based on recall of parents

* Afp.rec Data as of 05-12-2013

60 days Follow-up not done

FUP = Residual Weakness at 60 days follow up.

Table 7.2: AFP CASES PENDING FOR CLASSIFICATION WITH DATE OF ONSET MORE THAN 90 DAYS* 2013 (3/4)

S. No	DISTRICT	TEHSIL	EPID	SEX	AGE	DONSET	DOSESE	DSTOOL1	DSTOOL2	LAB	FEVER	ASVM	PROG	FUP	PEND (DAYS)	
89	HANGU	HANGU	KP/54/13/008	M	36	03-07-13	7+	24-07-13		EV	Y	N	Y		155	
90	HARIPUR	HARIPUR	KP/12/13/005	M	66	18-01-13	7+	19-02-13	20-02-13	EV	N	N	Y	Y	321	
91	HARIPUR	HARIPUR	KP/12/13/012	F	20	18-04-13	7+	19-05-13	20-05-13	EV	Y	Y	Y	Y	231	
92	HARIPUR	HARIPUR	KP/12/13/019	F	20	28-06-13	7+	18-08-13	19-08-13		Y	Y	Y		160	
93	KOHAT	LACHI	KP/50/13/012	M	96	28-05-13	7+	26-06-13	27-06-13	NVI	N	N	Y	Y	191	
94	KOHAT	LACHI	KP/50/13/015	M	21	15-05-13	7+	Late Notified			Y	Y	Y	Y	Y	204
95	LAKKIMRWT	LAKKIMRWT	KP/62/13/018	M	26	22-05-13	7+	21-06-13	22-06-13		N	Y	Y	Y	197	
96	MANSEHRA	MANSEHRA	KP/14/13/005	M	168	17-03-13	7+	26-10-13	28-10-13		N	N	Y	DIED	263	
97	MANSEHRA	MANSEHRA	KP/14/13/010	F	9	01-06-13	6	17-06-13	19-06-13	NVI	Y	N	Y	DIED	187	
98	MANSEHRA	MANSEHRA	KP/14/13/019	F	24	13-07-13	7+	Child Died Before Stool Collection			UK	UK	Y	DIED	145	
99	MARDAN	TAKHT BHAI	KP/40/13/034	M	5	10-03-13	6	Late Notified			N	Y	UK	Y	270	
100	MARDAN	MARDAN	KP/40/13/059	F	24	25-07-13	7+	21-08-13	22-08-13	NVI	Y	Y	Y	Y	133	
101	MARDAN	MARDAN	KP/40/13/063	M	108	15-08-13	7+	29-08-13	31-08-13	NVI	Y	Y	Y	Y	112	
102	MARDAN	MARDAN	KP/40/13/046	F	24	15-06-13	7+	05-07-13	06-07-13	EV	Y	Y	Y	Y	173	
103	MARDAN	MARDAN	KP/40/13/074	F	24	02-08-13	7+	11-09-13	13-09-13	NVI	N	Y	Y	Y	125	
104	MARDAN	MARDAN	KP/40/13/077	F	32	02-09-13	7+	24-09-13	25-09-13	NVI	Y	Y	Y	Y	94	
105	MARDAN	MARDAN	KP/40/13/073	M	23	15-06-13	7+	Late Notified			UK	Y	UK	Y	173	
106	NOWSHERA	NOWSHERA	KP/32/13/012	F	108	15-03-13	7+	Child Died Before Stool Collection			Y	N	Y	DIED	265	
107	NOWSHERA	NOWSHERA	KP/32/13/029	M	14	28-07-13	7+	17-08-13	18-08-13	EV	Y	Y	Y		130	
108	NOWSHERA	NOWSHERA	KP/32/13/036	F	30	03-08-13	7+	25-09-13	26-09-13	NVI	Y	Y	Y		124	
109	NOWSHERA	NOWSHERA	KP/32/13/031	M	25	25-07-13	7+	21-08-13	22-08-13	EV	Y	Y	Y		133	
110	PESHAWAR	PESHAWAR	KP/30/13/022	F	22	06-02-13	7+	Late Notified			N	N	N	Y	302	
111	PESHAWAR	PESHAWAR	KP/30/13/026	M	24	17-04-13	0	17-05-13	19-05-13	EV	Y	Y	Y	Y	232	
112	PESHAWAR	PESHAWAR	KP/30/13/039	F	54	03-05-13	7+	14-06-13	15-06-13	EV	Y	Y	Y	Y	216	
113	PESHAWAR	PESHAWAR	KP/30/13/043	F	66	16-06-13	7+	07-07-13	08-07-13	NVI	Y	Y	Y	Y	172	
114	PESHAWAR	PESHAWAR	KP/30/13/052	M	36	13-07-13	7+	27-07-13	28-07-13	EV	N	Y	Y	Y	145	
115	PESHAWAR	PESHAWAR	KP/30/13/063	M	14	16-08-13	7+	30-08-13	01-09-13	VACC	Y	N	Y	LOST	111	
116	PESHAWAR	PESHAWAR	KP/30/13/070	F	24	16-08-13	7+	24-09-13	25-09-13	EV	N	Y	Y		111	
117	PESHAWAR	PESHAWAR	KP/30/13/069	M	84	29-08-13	7+	13-09-13	14-09-13	NVI	Y	Y	Y	DIED	98	
118	PESHAWAR	PESHAWAR	KP/30/13/057	F	21	14-07-13	7+	16-08-13	17-08-13	EV	Y	Y	Y	Y	144	
119	PESHAWAR	PESHAWAR	KP/30/13/076	F	24	28-08-13	7+	02-10-13	10-10-13	NVI	Y	N	UK	Y	99	
120	PESHAWAR	PESHAWAR	KP/30/13/056	F	24	14-07-13	7+	06-08-13	07-08-13	NVI	N	N	Y	Y	144	
121	PESHAWAR	PESHAWAR	KP/30/13/059	M	86	13-06-13	7+	Late Notified			Y	Y	Y	Y	175	
122	SHANGLA	MARTOONG	KP/26/13/001	M	72	08-01-13	7+	Late Notified			Y	Y	Y	LOST	331	
123	SHANGLA	CHAKISAR	KP/26/13/008	F	36	01-06-13	7+	27-06-13	31-07-13	NVI	Y	Y	Y	Y	187	
124	SWAT	SWAT	KP/24/13/006	F	132	02-04-13	7+	10-04-13		NVI	N	N	Y	DIED	247	
125	SWAT	SWAT	KP/24/13/009	M	16	19-04-13	7+	14-05-13	15-05-13	NVI	Y	N	N	Y	230	
126	TANK	TANK	KP/63/13/005	M	42	25-02-13	7+	27-04-13	28-04-13	NVI	Y	N	UK	Y	283	
127	TANK	TANK	KP/63/13/009	M	13	02-08-13	7+	06-09-13	07-09-13	NVI	N	N	Y		125	
128	TANK	TANK	KP/63/13/008	M	24	06-07-13	7+	30-08-13	31-08-13	EV	N	Y	Y		152	
129	CHAGHAI	DALBANDIN	BN/13/13/002	F	14	21-08-13	6	Child Died Before Stool Collection			Y	Y	Y	DIED	106	
130	JAFARABAD	SOHBAT PUR	BN/43/13/015	F	30	18-07-13	7+	30-08-13	31-08-13	EV	Y	Y	Y	Y	140	
131	JAFARABAD	SOHBAT PUR	BN/43/13/017	F	2	02-09-13	3	Child Died Before Stool Collection			N	Y	Y	DIED	94	
132	KHUZDAR	NAAL	BN/54/13/002	M	82	23-08-13	4	05-09-13	07-09-13	NVI	Y	N	Y		104	

€ Based on recall of parents

* Afp.rec Data as of 05-12-2013

60 days Follow-up not done

FUP = Residual Weakness at 60 days follow up.

Table 7.3: AFP CASES PENDING FOR CLASSIFICATION WITH DATE OF ONSET MORE THAN 90 DAYS* 2013 (4/4)

S. No	DISTRICT	TEHSIL	EPID	SEX	AGE	DONSET	DOSESE	DSTOOL1	DSTOOL2	LAB	FEVER	ASYM	PROG	FUP	PEND (DAYS)
133	QUETTA	QUETTA CITY	BN/11/13/006	F	9	12-04-13	7+	27-05-13	28-05-13	NVI	N	Y	Y	Y	237
134	GHIZER	PUNIAL	GB/41/13/001	M	66	02-09-13	7+	06-09-13		EV	N	Y	Y	DIED	94
135	BAJOUR	MAMUND	FT/33/13/007	M	45	02-01-13	7+	Late Notified			N	Y	Y	Y	337
136	BAJOUR	KHAR	FT/33/13/018	M	22	08-07-13	7+	23-08-13	24-08-13	NVI	Y	Y	Y		150
137	BAJOUR	MAMUND	FT/33/13/017	F	44	09-07-13	7+	13-08-13	14-08-13	EV	Y	N	N		149
138	BAJOUR	KHAR	FT/33/13/020	F	12	07-08-13	7+	07-09-13	08-09-13	EV	Y	Y	N		120
139	BAJOUR	MAMUND	FT/33/13/022	M	17	28-07-13	7+	12-09-13	13-09-13	NVI	N	Y	N		130
140	BAJOUR	KHAR	FT/33/13/023	F	48	15-08-13	7+	15-09-13	16-09-13	EV	N	N	Y		112
141	BAJOUR	KHAR	FT/33/13/024	M	36	18-08-13	7+	16-09-13	17-09-13	NVI	Y	Y	Y		109
142	BAJOUR	MAMUND	FT/33/13/032	M	18	04-09-13	7+	05-10-13	06-10-13	VACC	Y	Y	N		92
143	FR BANNU	FR BANNU	FT/69/13/007	M	22	30-07-13	3	28-08-13	29-08-13	EV	Y	Y	Y		128
144	FR BANNU	FR BANNU	FT/69/13/012	M	9	10-08-13	0	22-09-13	23-09-13	EV	Y	Y	Y		117
145	KHYBER	JAMRUD	FT/34/13/002	F	24	18-01-13	7+	21-02-13	23-02-13	NVI	N	Y	Y	Y	321
146	KHYBER	JAMRUD	FT/34/13/017	M	14	08-06-13	0	16-06-13		NVI	Y	Y	Y	Y	180
147	KHYBER	BARA	FT/34/13/016	F	10	06-06-13	0	21-06-13	23-06-13	NVI	Y	Y	Y		182
148	KHYBER	BARA	FT/34/13/018	M	12	11-06-13	0	01-07-13	02-07-13	EV	Y	Y	Y		177
149	KHYBER	BARA	FT/34/13/021	F	18	13-07-13	0	25-07-13	29-07-13	NVI	N	N	Y		145
150	KHYBER	LANDI KOTAL	FT/34/13/044	M	44	30-06-13	7+	Late Notified			Y	Y	Y	Y	158
151	MOHMAND	PINDIALI	FT/35/13/006	F	17	05-05-13	7+	17-06-13	18-06-13	NVI	Y	Y	Y		214
152	MOHMAND	UPPER MOHMAND	FT/35/13/003	F	18	18-04-13	7+	07-05-13	08-05-13	NVI	Y	Y	Y	Y	231
153	MOHMAND	UPPER MOHMAND	FT/35/13/008	M	26	08-05-13	7+	22-06-13	23-06-13		Y	Y	Y		211
154	WAZIR-N	MIRAN SHAH	FT/64/13/007	M	48	25-04-13	5	10-05-13	12-05-13	NVI	Y	N	Y	Y	224
155	WAZIR-N	MIR ALI	FT/64/13/030	F	9	09-08-13	0	Late Notified			Y	N	N		118
156	WAZIR-N	MIR ALI	FT/64/13/042	M	7	03-07-13	0	29-08-13	30-08-13	EV	Y	N	Y		155
157	WAZIR-S	WANA	FT/65/13/006	F	26	13-07-13	7+	15-08-13	16-08-13	NVI	Y	Y	Y		145
158	WAZIR-S	WANA	FT/65/13/005	F	12	25-04-13	1	19-06-13	20-06-13	NVI	UK	N	UK		224

€ Based on recall of parents

* Afp.rec Data as of 05-12-2013

60 days Follow-up not done

FUP = Residual Weakness at 60 days follow up.