



**World Health  
Organization**

# **Weekly AFP Surveillance Update Pakistan**

**Week 36** (*Ended on 7<sup>th</sup> September, 2013*)

AFP Surveillance



## ***National Surveillance Cell Federal EPI***

World Health Organization Country Office,  
Chak Shahzad, Park Road,  
Islamabad, Pakistan

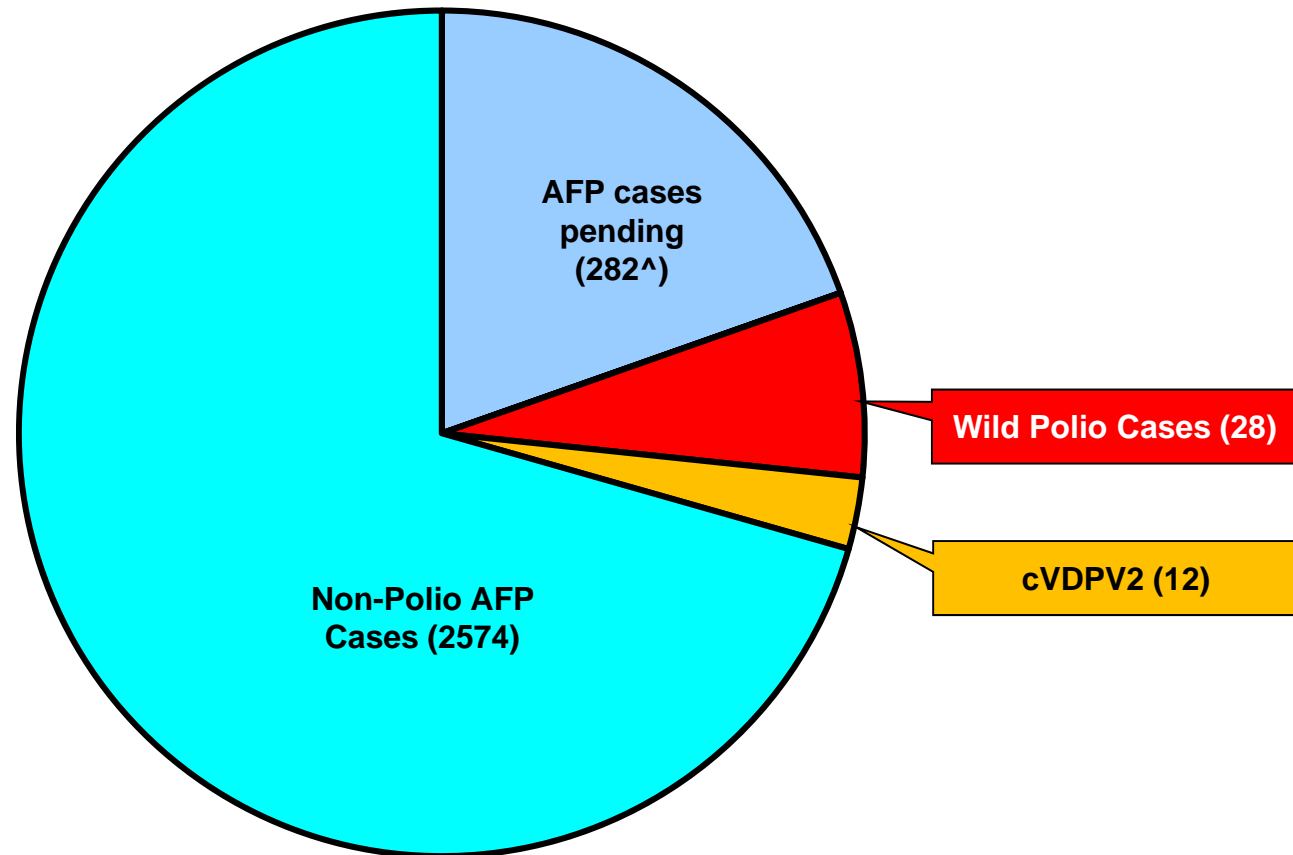
Tel: +92-51 9255123 / 9255282 /9255184

Fax: +92-51 9255274

Email: [epidata@pak.emro.who.int](mailto:epidata@pak.emro.who.int)

Web site: [www.whopak.org](http://www.whopak.org)

# AFP Case Profile, 2013\*



**Total AFP Cases Reported = 2896**

<sup>^</sup>75 Inadequate cases pending classification by ERC;  
<sup>^</sup>59 Inadequate cases not due for FUP  
<sup>^</sup>148 Pending in the Lab

## Point in Time Comparison of polio cases by province/region 2012<sup>§</sup> & 2013\*

Region/ Province	No. of polio cases		No. of infected districts/towns		Last polio case
	2012	2013	2012	2013	
<b>Khyber Pakhtunkhwa</b>	15	6	11	5	19-Aug-13
<b>FATA / FR Areas</b>	15	17	4	3	11-Aug-13
<b>Sindh</b>	3	3	3	3	09-July-13
<b>Balochistan</b>	3	-	1	-	02-Oct-12
<b>Punjab</b>	2	2	2	2	26-May-13
<b>Gilgit-Baltistan</b>	1	-	1	-	06-Aug-12
<b>Pakistan</b>	<b>39</b>	<b>28</b>	<b>22</b>	<b>13</b>	<b>19-Aug-13</b>

Five additional districts/town declared infected based on environmental samples in 2013

Total polio cases of 2012 are 58

\* Afp.rec Data as of 05-09-2013

§Based on date of onset

**Table 1: List of Confirmed Polio Cases, Pakistan 2013\* (1/2)**

S.NO.	PROVINCE/ REGION	DISTRICT	TEHSIL	EPID NO.	SEX	AGE (m)	DATE ONSET OF PARALYSIS	NO. OPV DOSES (based on parents recall)		FEVER	Asymmetric Paralysis	Rapid Progression	REFUSAL	WPV TYPE	GENETICS
								Route	SIA's						Cluster
1	SINDH	BIN QASIM	BIN QASIM	SD/62/13/001	M	24	14-Jan-13	0	0	N	Y	Y	Y	NSL1	R4
2	KP	BANNU	BANNU	NW/61/13/002	M	13	26-Jan-13	0	0	Y	N	Y	Y	NSL1	R4
3	KP	MALAKAND	DARGAI	NW/20/13/006	F	3	08-Feb-13	2	2	Y	N	Y	N	NSL1	R4
4	KP	MARDAN	MARDAN	NW/40/13/009	M	30	12-Feb-13	3	7+	Y	N	Y	N	NSL1	R4
5	PUNJAB	MIWANWALI	ISAKHEL	PB/43/13/005	F	36	07-Feb-13	3	7+	Y	N	Y	N	NSL1	R4
6	SINDH	DADU	MEHAR	SD/24/13/006	F	15	22-Mar-13	0	2	Y	N	Y	N	NSL1	R2
7	KP	MARDAN	MARDAN	NW/40/13/026	M	8	22-Apr-13	0	0	Y	Y	Y	Y	NSL1	R4
8	FATA	KHYBER\$	BARA	FT/34/13/008	M	10	24-Apr-13	2	4	Y	Y	N	N	NSL1	R4
9	FATA	FR BANNU	FR BANNU	FT/69/13/001	M	16	3-May-13	0	3	Y	Y	Y	Y	NSL1	R4
10	FATA	KHYBER\$	BARA	FT/34/13/010	M	8	10-May-13	0	0	Y	Y	Y	N	NSL1	R4
11	FATA	KHYBER\$	BARA	FT/34/13/011	M	23	14-May-13	0	2	Y	Y	Y	N	NSL1	R4
12	FATA	KHYBER\$	BARA	FT/34/13/012	M	4	16-May-13	0	0	Y	N	Y	N	NSL1	R4
13	FATA	KHYBER\$	BARA	FT/34/13/013	M	24	11-May-13	2	3	Y	N	Y	N	NSL1	R4
14	FATA	FR BANNU	FR BANNU	FT/69/13/002	F	22	19-May-13	0	7+	Y	N	Y	N	NSL1	R4
15	FATA	KHYBER\$	BARA	FT/34/13/014	M	30	20-May-13	0	0	Y	N	Y	N	NSL1	R4
16	PUNJAB	MBDIN	MALIKWAL	PB/24/13/013	F	96	26-May-13	3	7+	Y	Y	Y	N	NSL1	R4
17	FATA	KHYBER\$	BARA	FT/34/13/015	M	15	06-June-13	0	0	Y	Y	Y	N	NSL1	R4
18	FATA	WAZIR-N\$	MIR ALI	FT/64/13/010	M	9	24-May-13	0	0	Y	Y	Y	N	NSL1	R4
19	FATA	WAZIR-N\$	MIR ALI	FT/64/13/014	F	11	15-June-13	0	0	Y	Y	Y	N	NSL1	R4
20	FATA	KHYBER\$	BARA	FT/34/13/019	F	12	23-June-13	0	0	Y	N	Y	N	NSL1	R4
21	KP	PESHAWAR	PESHAWAR	KP/30/13/042	M	12	30-June-13	0	0	Y	N	Y	Y	NSL1	R4
22	FATA	KHYBER\$	BARA	FT/34/13/020	F	12	03-July-13	0	0	N	N	Y	N	NSL1	

\$ Security compromised area

\* Afp.rec Data as of 05-09-2013

**Table 1.1: List of Confirmed Polio Cases, Pakistan 2013\* (2/2)**

S.NO.	PROVINCE/ REGION	DISTRICT	TEHSIL	EPID NO.	SEX	AGE (m)	DATE ONSET OF PARALYSIS	NO. OPV DOSES (based on parents recall)		FEVER	Asymmetric Paralysis	Rapid Progression	REFUSAL	WPV TYPE	GENETICS
								Routi ne	SIA's						Cluster
23	SINDH	KHIGADDAP	GADDAP	SD/63/13/015	F	12	09-July-13	3	6	Y	Y	Y	N	NSL1	
24	FATA	WAZIR-N\$	MIR AN SHAH	FT/64/13/018	F	18	13-July-13	0	0	Y	Y	Y	N	NSL1	
25	FATA	FR BANNU	FR BANNU	FT/69/13/006	M	18	27-July-13	0	7+	Y	N	Y	N	NSL1	
26	FATA	WAZIR-N\$	MIR ALI	FT/64/13/032	F	21	05-Aug-13	0	0	Y	Y	Y	N	NSL1	
27	FATA	WAZIR-N\$	RAZMAK	FT/64/13/033	M	11	11-Aug-13	0	0	Y	Y	Y	N	NSL1	
28	KP	KOHAT	KOHAT	KP/50/13/017	F	10	19-Aug-13	0	5	Y	Y	Y	N	NSL1	

\$ Security compromised area

**New Case**

\* Afp.rec Data as of 05-09-2013

**Table 2: LAB Update 2013\***

Month of Onset	AFP Cases	No virus isolated	Cases Under Process		Isolated Viruses from stools						
			Culture	ITD	Vaccine viruses		NPEV		Wild	Results within 14 days	
			n	n	n	%	n	%	n	n	%
January	333	275	0	0	19	6	37	11%	2	333	100%
February	330	285	0	0	16	5	26	8%	3	330	100%
March	308	248	0	0	7	2	52	17%	1	308	100%
April	352	244	0	0	22	6	84	24%	2	352	100%
May	419	304	0	0	15	4	91	22%	9	419	100%
June	469	326	0	0	21	4	118	25%	4	469	100%
July	378	233	2	7	12	3	130	34%	4	379	100%
August	387	179	88	11	9	2	97	25%	3	288	74%
September	3	0	3	0	0	0	0	0%	0	0	0%
Pakistan	2979	2094	93	18	121	4	635	21%	28	2878	97%

\* Data as of 05-09-2013

## Table 3: Urgent / ITD Pending Cases (1/2)

S. #	Basic information									OPV doses			Urgent		Prov Diagnosis	Lab update			Remarks	
	District	Tehsil	Union council	Epid number	Date of Onset	Age (M)	Sex	Date of 1st stool	Stool Adeq	RI	SAs	Last 6 SAs	Last dose	By Field		By NSC	Lab No.	Days Incub		Culture update
<b>Isolates pending for ITSD</b>																				
1	FR DIKHAN*	FR DIKHAN	MORGA2	FT/68/13/001		36	M	31-Aug-13	Y	#	#		20-Aug-13	N		*	3781	L20B+		
2	KHYBER	BARA	MILWARD	FT/34/13/023	14-Aug-13	24	M	16-Aug-13	N	0	0	0		Y	Y	SUSPECTED POLIO	3466	2	P2	Discardant <input type="checkbox"/>
3	WAZIR-N	MIR ALI	HAIDER KHEL	FT/64/13/020	20-Jul-13	6	M	25-Jul-13	Y	0	0	0		Y	Y	POLIO / INJ NEURIMS	3145	1	P2	Discardant <input type="checkbox"/>
4	WAZIR-N	MIR ALI	SAIDGAI	FT/64/13/021	22-Jul-13	12	M	26-Jul-13	Y	3	0	0		N	Y	GBS	3179	7	P2	Discardant <input type="checkbox"/>
5	WAZIR-N	RAZMAK	DOSALI	FT/64/13/022	24-Jul-13	24	M	01-Aug-13	Y	0	6	0	23-Apr-12	N	N	GBS	3257	14	P2	Discardant <input type="checkbox"/>
6	WAZIR-N	MIR ALI	KHUSHALI	FT/64/13/023	31-Jul-13	12	M	03-Aug-13	Y	0	0	0		Y	Y	POLIO / GBS	3302	7	P2	Discardant <input type="checkbox"/>
7	WAZIR-N	MIR ALI	TAPPI	FT/64/13/025	09-Aug-13	10	F	14-Aug-13	Y	0	0	0		Y	Y	GBS	3404	3	P2	Discardant <input type="checkbox"/>
8	WAZIR-N	SPINWAM	MOBALI	FT/64/13/029	05-Aug-13	12	M	18-Aug-13	Y	0	0	0		Y	Y	Polio/Injection Neurim/GBS	3465	2	P2	Discardant <input type="checkbox"/>
9	WAZIR-N	MIRAN SHAH	SPULGA	FT/64/13/036	19-Aug-13	8	F	22-Aug-13	Y	0	0	0		Y	Y	GBS/POLIO	3587	7	L20B+	INACCESSIBLE SINCE JUNE 2012
10	WAZIR-N	MIR ALI	IDEK	FT/64/13/037	21-Aug-13	8	F	24-Aug-13	Y	0	0	0		Y	Y	GBS/POLIO	3589	2	P2	Discardant <input type="checkbox"/>
11	WAZIR-N	MIR ALI	SHERATALLA	FT/64/13/038	19-Aug-13	18	M	19-Aug-13	Y	0	0	0		Y	Y	INJECTION NEURIMS/POLIO	3647	5	P2	Discardant <input type="checkbox"/>
12	WAZIR-N	MIR ALI	SHERATALLA	FT/64/13/039	18-Aug-13	12	F	26-Aug-13	Y	0	0	0		Y	Y	POLIO / INJECTION NEURIMS	3682	4	P2	Discardant <input type="checkbox"/>
13	WAZIR-N	MIRAN SHAH	SMALL KHEL	FT/64/13/041	26-Aug-13	8	M	27-Aug-13	Y	0	0	0		Y	Y	POLIO	3706	5	SL2	Waiting rRT-PCR for VDPV
14	WAZIR-N*	MIR ALI	KHUSHALI	FT/64/13/042	03-Jul-13	7	M	29-Aug-13	N	0	0	0		Y	Y	POLIO MYELITIS/GBS	3754	1	L20B+	
15	WAZIR-N*	RAZMAK	MUSSAKI	FT/64/13/044	24-Aug-13	8	M	30-Aug-13	Y	0	0	0		Y	Y	POLIO/GBS/HYPOCALCAEMIA	3795	6	L20B+	
16	CHARSADA	TANGI	DHAKI	KP/31/13/050	25-Aug-13	21	F	28-Aug-13	Y	3	7+		27-Aug-13	N	N	TRAUMATIC NEURIMS	3720	6	L20B+	
17	RAWALPINDI	RAWALPINDI	CANTT-I	PB/11/13/050	15-Aug-13	102	F	24-Aug-13	N	3	7+	0		N	N	GBS	3620	8	L20B+	CASE IS NOT L20B+ (INDEX OF RWP 50-C3)
18	RAWALPINDI	RAWALPINDI	CANTT-I	PB/11/13/050-C3		7	M	27-Aug-13	-	-	-		26-Aug-13	N	-	-	3650	7	SL1	Waiting rRT-PCR for VDPV

\* New L20B+

#Data not available

\* NSC Criteria = Fever, Rapid Progress, Age < 48 months and OPV Doses <7

UP = Under process

Urgent (Field/NSC) / Inadequate specimens / Age 12-35 months / Zero OPV dose

Pending for genomic sequencing

## Table 3.1: Urgent / ITD Pending Cases (2/2)

S. #	Basic information									OPV doses				Urgent		Prov Diagnosis	Lab update			Remarks
	District	Tehsil	Union council	Epid number	Date of Onset	Age (M)	Sex	Date of 1st stool	Stool Adeq	R1	SIAs	Last 6 SIAs	Last dose	By Field	By NSCY		Lab No.	Days Inoc	Culture update	
19	GHOTKI	GHOTKI	BANDH	SD/42/13/041	20-Jul-13	18	M	23-Jul-13	Y	3	7+	6	17-Jun-13	N	N	HEMIPLEGIA/CVA	3127	7	P1	Discordant O
20	KHIGADAP	GADAP	4	SD/63/13/011	03-Jul-13	24	F	19-Jul-13	N	3	5	3	02-May-13	N	N	GBS	3053	5	P2	Discordant O
<b>Reported urgent (by field / NSCY criteria)</b>																				
21	WAZIR-N	MIR ALI	ALI KHEL	FT/64/13/043	23-Aug-13	11	F	02-Sep-13	Y	2	4	0		Y	Y	POLIOMYELITIS/GBS/MENINGITIS	3809	6	UP	
22	WAZIR-N	MIRAN SHAH	MADA KHEL	FT/64/13/046	29-Aug-13	15	F		Y	0	0	0		Y	Y	POLIOMYELITIS/GBS/MENINGITIS				SPECIMEN NOT YET RECEIVED IN LAB
23	WAZIR-N	MIR ALI	KHUSHALI	FT/64/13/048		12	M		#	0	0	0		Y	Y	POLIOMYELITIS/GBS/MENINGITIS				SPECIMEN NOT YET RECEIVED IN LAB
24	BANNU	#	#	KP/61/13/015	01-Sep-13	8	F	03-Sep-13	Y	0	0	0		Y	Y	POLIOMYELITIS/GBS/MENINGITIS	3845	4	UP	CASE IS FROM LAKKI, REVISION OF EPID IS IN PROCESS
25	NOWSHERA	NOWSHERA	NIZAMPUR	KP/32/13/034	27-Aug-13	22	M	29-Aug-13	Y	3	7+	6	27-Aug-13	Y	N	POLIOMYELITIS/GBS/MENINGITIS	3778		UP	
26	KHILAYARI	#	#	SD/71/13/006	26-Aug-13	45	M	02-Sep-13	#	#	#	#	18-Aug-13	Y	#	POLIOMYELITIS/GBS/MENINGITIS	3843	4	UP	
27	KHISITE	SITE	9	SD/78/13/010	25-Aug-13	18	M	29-Aug-13	Y	3	5	4	16-Apr-13	Y	N	TRAUMATIC NEURITIS	3789		UP	

\* New L20B+

#Data not available

Y NSC Criteria = Fever, Rapid Progress, Age < 48 months and OPV Doses < 7

UP = Under process

Urgent (Field/NSC) / Inadequate specimens / Age 12-35 months / Zero OPV dose

OPending for genomic sequencing



# Summary of Laboratory data for Environmental Surveillance- Pakistan (Jan 2011 to date)

## Report for Epidemiological week= 35 (25 Aug – 31 Aug, 2013)



- Wild poliovirus type 1 (WPV1)
- Wild poliovirus type 3 (WPV3)
- ■ Mixture WPV1 & WPV3
- No WPV Isolated
- Under process
- X Scheduled sampling, sample not collected
- No sampling scheduled
- Mixture WPV1 & VDPV type 2

**SUMMARY**

Total Sites = 23

Total Samples Collected (2011-2012-2013) = 624

Total Samples with results available = 612

Total samples positive for Wild PV (2011-2012-2013) = **253** (136+88+29) (WPV1= 253)

Samples Positive for VDPV = 1 (Type 2 VDPV from KHI-Gadaap)

## Comparison environmental sampling results 2012-13\*

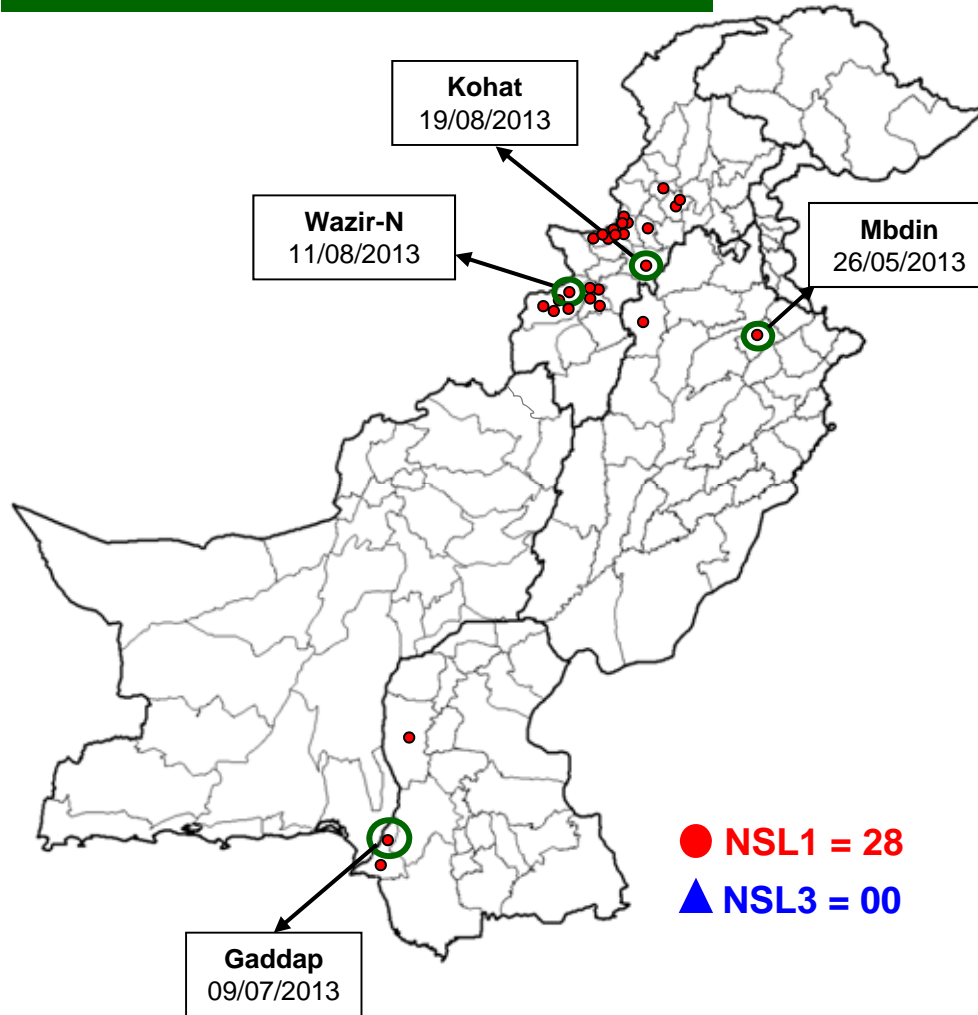
DISTRICT	2012			2013			Last isolate
	TOTAL	WILD		TOTAL	WILD		
	n	n	%	n	n	%	
LAHORE	24	16	67%	40	0	0%	20-Nov-12
MULTAN	24	4	17%	24	0	0%	18-Jun-12
RAWALPINDI	8	5	63%	8	2	25%	25-Jul-13
FAISALABAD	Sampling started from week 36			24	1	4%	03-Jan-13
KHIGIQBAL	16	2	13%	16	1	6%	22-Jul-13
KHIGADAP	24	11	46%	30	6	20%	13-Aug-13
KHIBALDIA	8	0	0%	8	0	0%	10-Jul-12
SUKKUR	9	6	67%	16	0	0%	05-Sep-12
HYDERABAD	2	2	100%	8	7	88%	12-Aug-13
PESHAWAR	16	12	75%	16	12	75%	07-Aug-13
QUETTA	16	2	13%	23	1	4%	20-Feb-13
<b>PAKISTAN</b>	<b>147</b>	<b>60</b>	<b>41%</b>	<b>213</b>	<b>30</b>	<b>14%</b>	<b>13-Aug-13</b>

\*Comparison of samples up to 1<sup>st</sup> September, for both years with available results

Data source Polio RRL

# Map1: Distribution of Wild Polio cases Pakistan 2013\*

Districts/ Towns with Wild Polio cases = 13



● NSL1 = 28

▲ NSL3 = 00

Province/ Country	Date of Last Case		Number of cases 2013	
	P1	P3	P1	P3
PUNJAB	May, 2013	Jun, 2010	2	-
SINDH	July, 2013	Jan, 2010	3	-
KHYBER- PAKHTUNKHWA	Aug, 2013	Oct, 2010	6	-
FATA	Aug, 2013	Apr, 2012	17	-
BALUCHISTAN	Oct, 2012	Apr, 2010	-	-
AJK	-	Jun, 2000	-	-
GILGIT-BALTISTAN	Aug, 2012	-	-	-
ISLAMABAD	Sep, 2008	Sep, 2008	-	-
<b>PAKISTAN</b>	<b>Aug, 2013</b>	<b>Apr, 2012</b>	<b>28</b>	<b>-</b>

○ District with last polio case in province

Cases randomly placed  
in districts

— Provincial Boundary  
— Districts Boundary

\* Afp.rec Data as of 05-09-2013

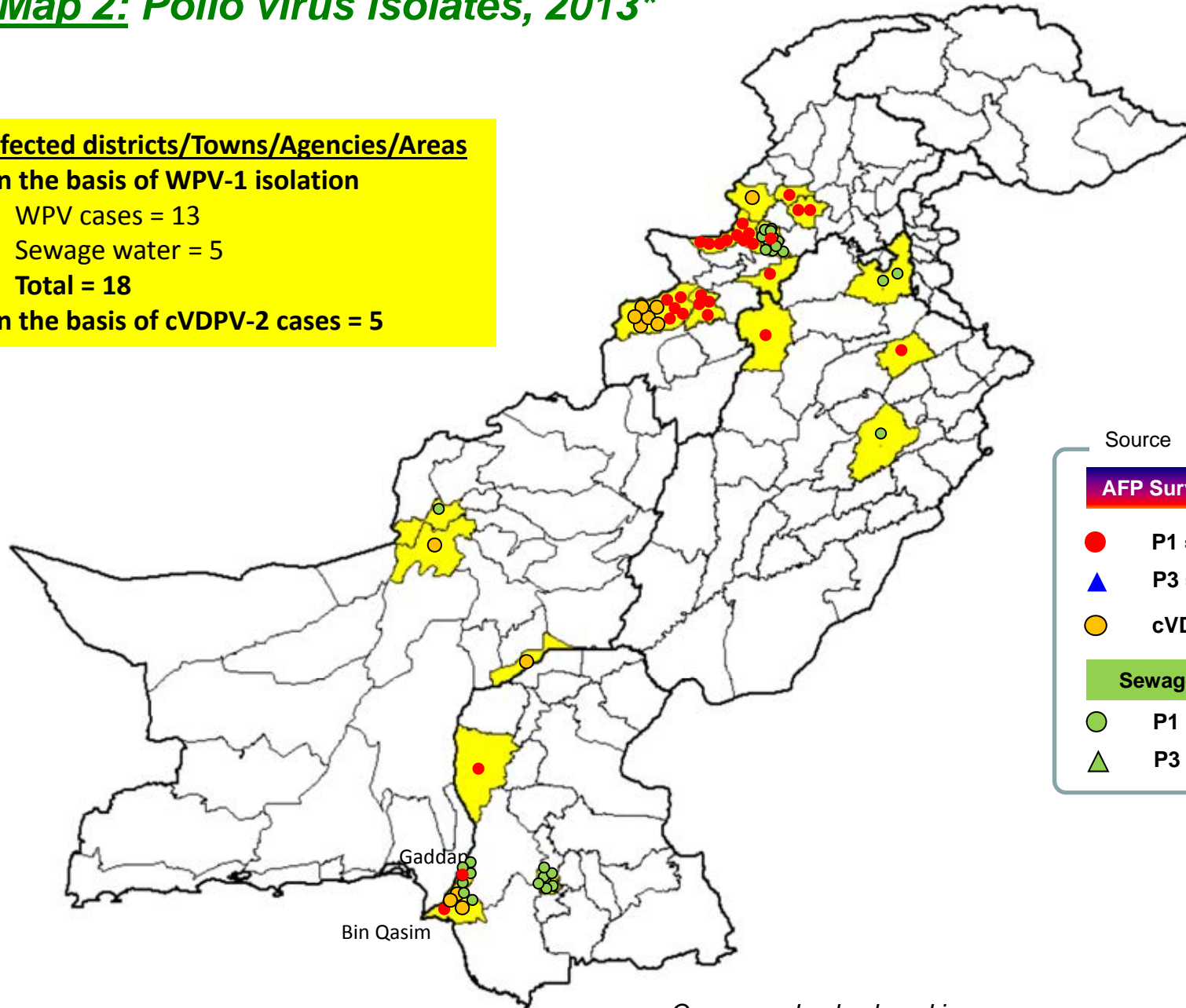
## Map 2: Polio virus isolates, 2013\*

### Infected districts/Towns/Agencies/Areas

#### On the basis of WPV-1 isolation

- WPV cases = 13
- Sewage water = 5
- Total = 18

#### On the basis of cVDPV-2 cases = 5



Source

#### AFP Surveillance

- P1 = 28
- ▲ P3 = 0
- cVDPV-2 = 12

#### Sewage water

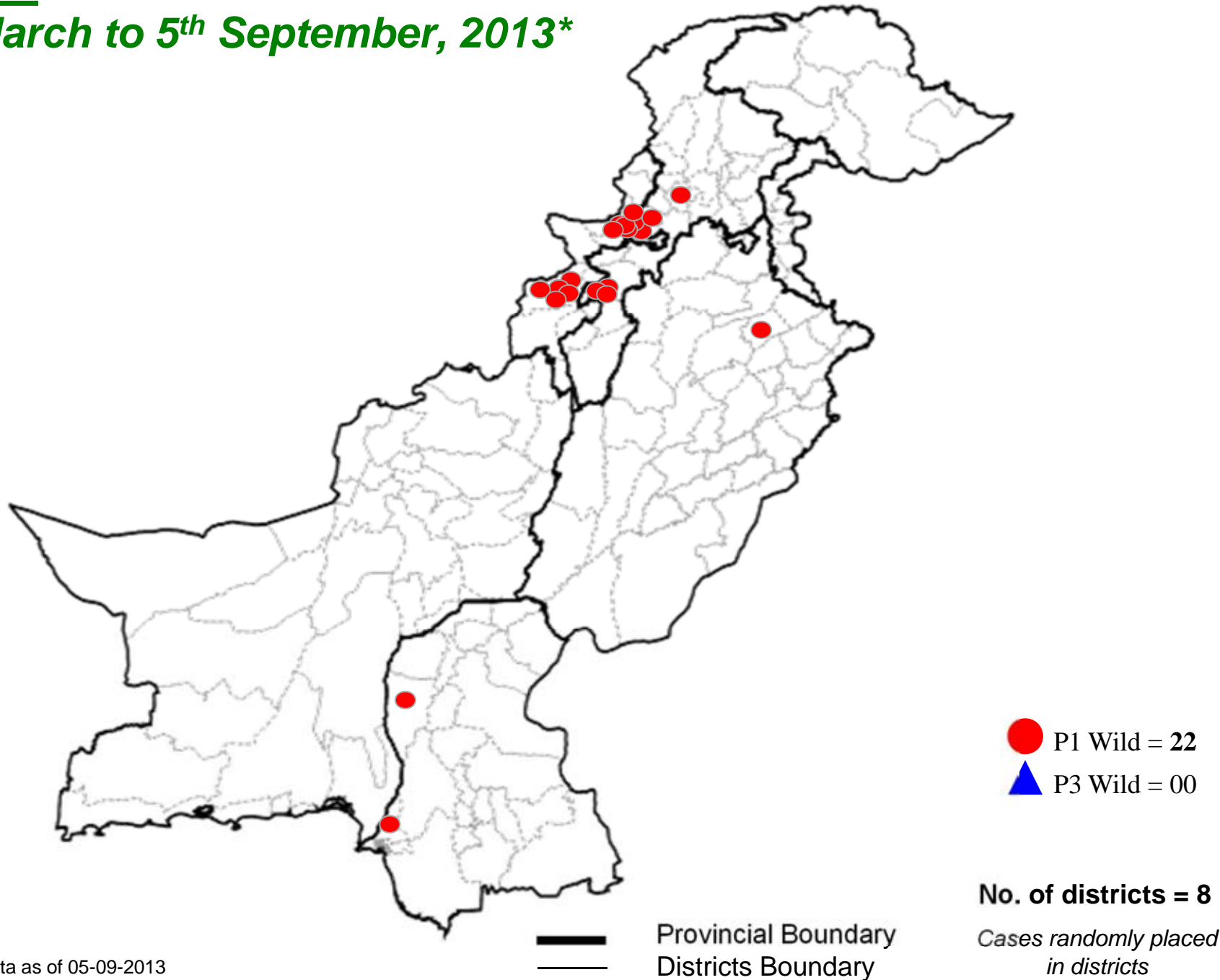
- P1 = 30
- ▲ P3 = 0

— Provincial Boundary  
 — Districts Boundary

\* Afp.rec Data as of 05-09-2013

*Cases randomly placed in districts*

### Map 3: Wild Polio cases in the last 6 months from 6<sup>th</sup> March to 5<sup>th</sup> September, 2013\*



\* Afp.rec Data as of 05-09-2013

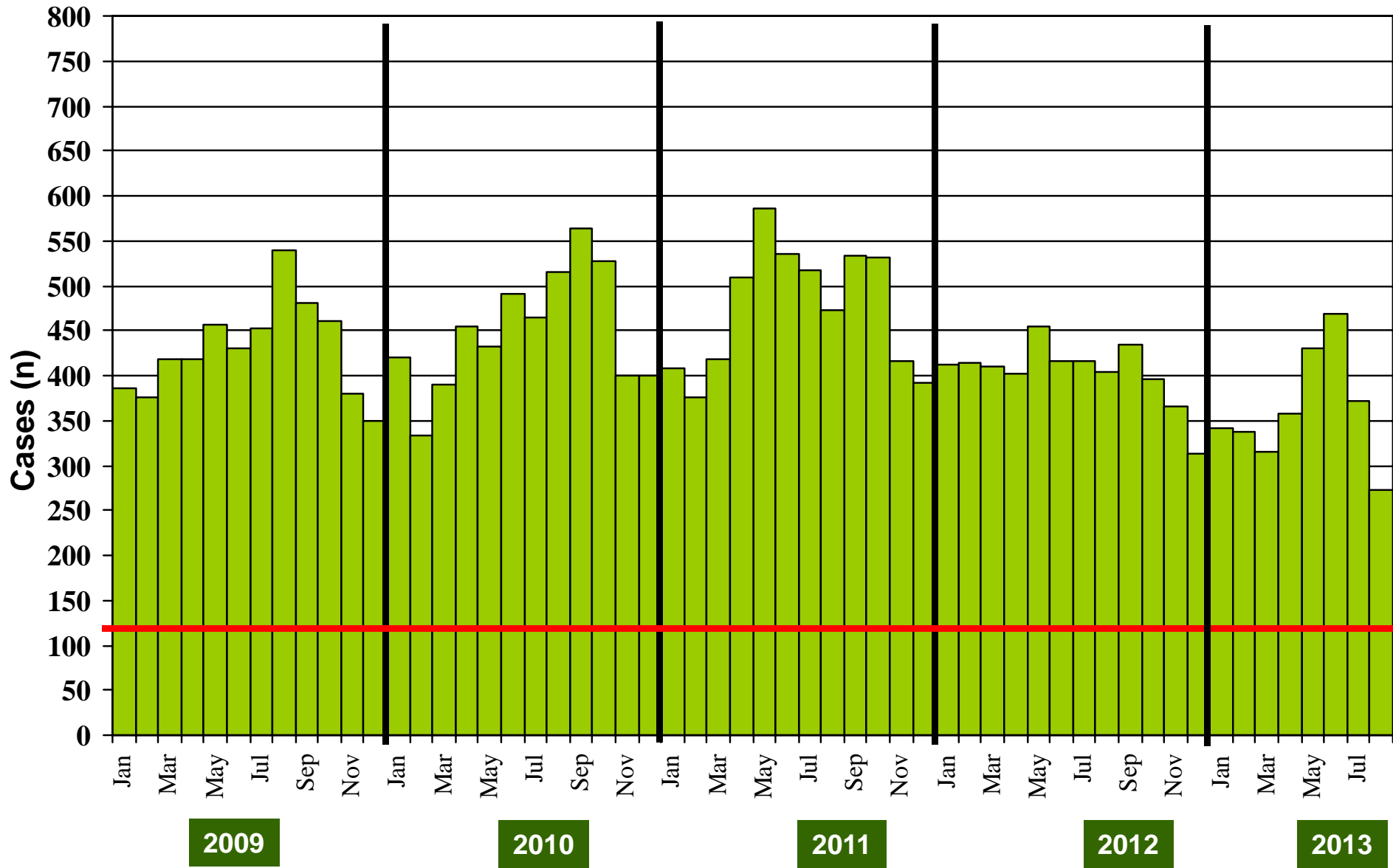
**Table 4: Distribution of AFP Cases By Week of Onset ^  
Pakistan 2013\* [Week number/Ending on]**

PROVINCE	W 21 25 May 2013	W 22 01 June 2013	W 23 08 June 2013	W 24 15 June 2013	W 25 22 June 2013	W 26 29 June 2013	W 27 06 July 2013	W 28 13 July 2013	W 29 20 July 2013	W 30 27 July 2013	W 31 03 Aug 2013	W 32 10 Aug 2013	W 33 17 Aug 2013	W 34 24 Aug 2013	W 35 31 Aug 2013
PUNJAB	56	45	62	61	47	41	45	48	44	37	52	28	47	45	20
SINDH	21	23	21	13	27	18	20	23	13	17	12	17	27	21	8
KP	12	36	21	21	14	13	17	19	18	21	16	12	23	10	7
FATA	5	2	6	6	1	4	8	8	2	5	3	12	4	8	1
BALUCHISTAN	7	6	7	4	8	5	3	3	6	3	2	3	8	8	1
AJK	0	1	2	1	2	1	2	0	1	2	0	0	2	1	1
GILGIT BILTISTAN	0	0	0	0	0	0	1	0	0	0	0	0	0	0	0
ISLAMABAD	2	0	2	0	0	0	1	0	0	1	0	0	1	0	1
<b>PAKISTAN</b>	<b>103</b>	<b>113</b>	<b>121</b>	<b>106</b>	<b>99</b>	<b>82</b>	<b>97</b>	<b>101</b>	<b>84</b>	<b>86</b>	<b>85</b>	<b>72</b>	<b>112</b>	<b>93</b>	<b>39</b>

\* Afp.rec & Afplab.rec: Data as of 05-09-2013

^ MMWR Epidemiological Weeks

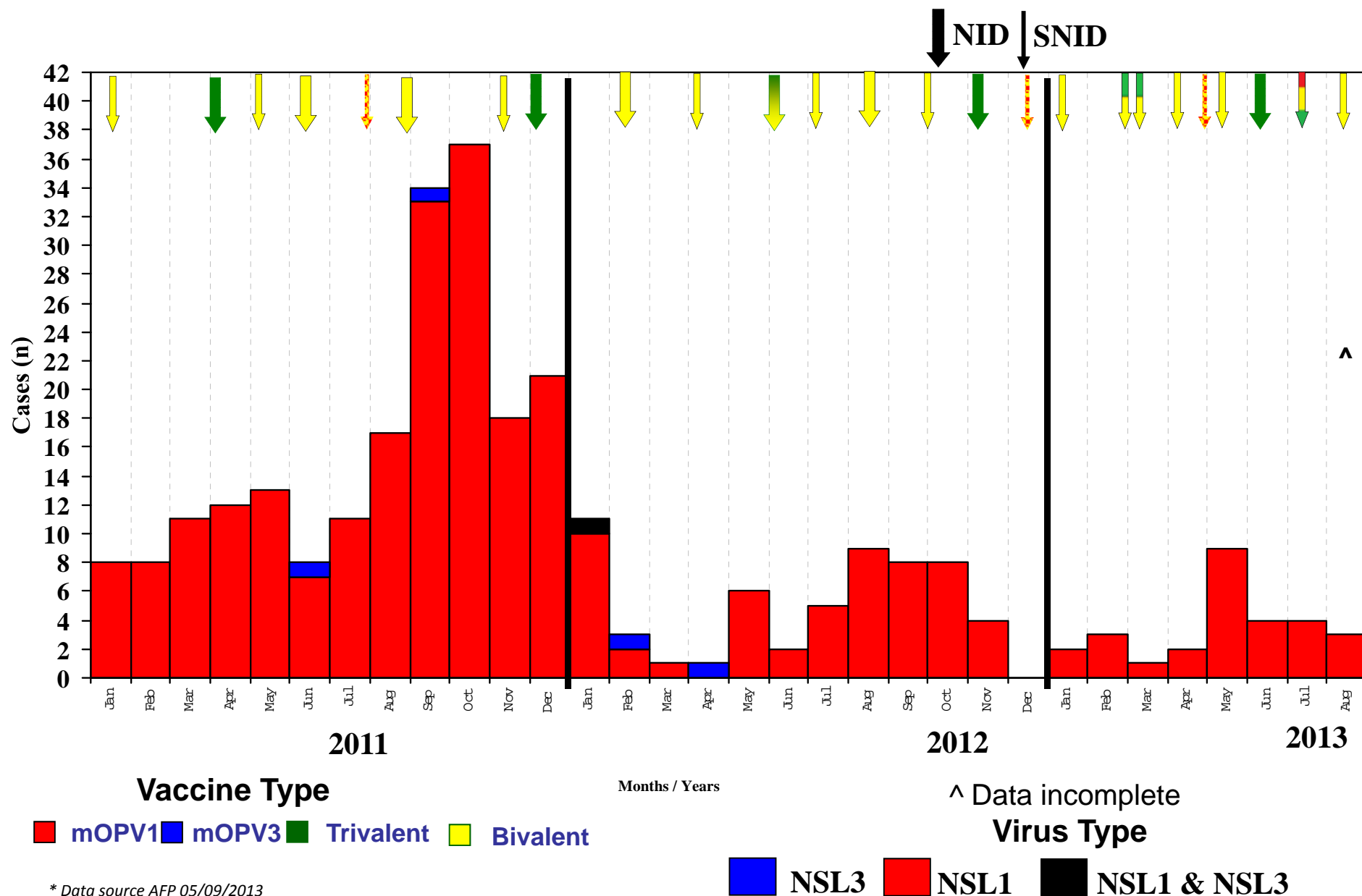
**Graph 1: Distribution of AFP Cases by Month, Pakistan 2009-2013\***



**@ Non-polio AFP rate of 2/100,000 children < 15 years**

\*Afp.rec Data as of 05-09-2013

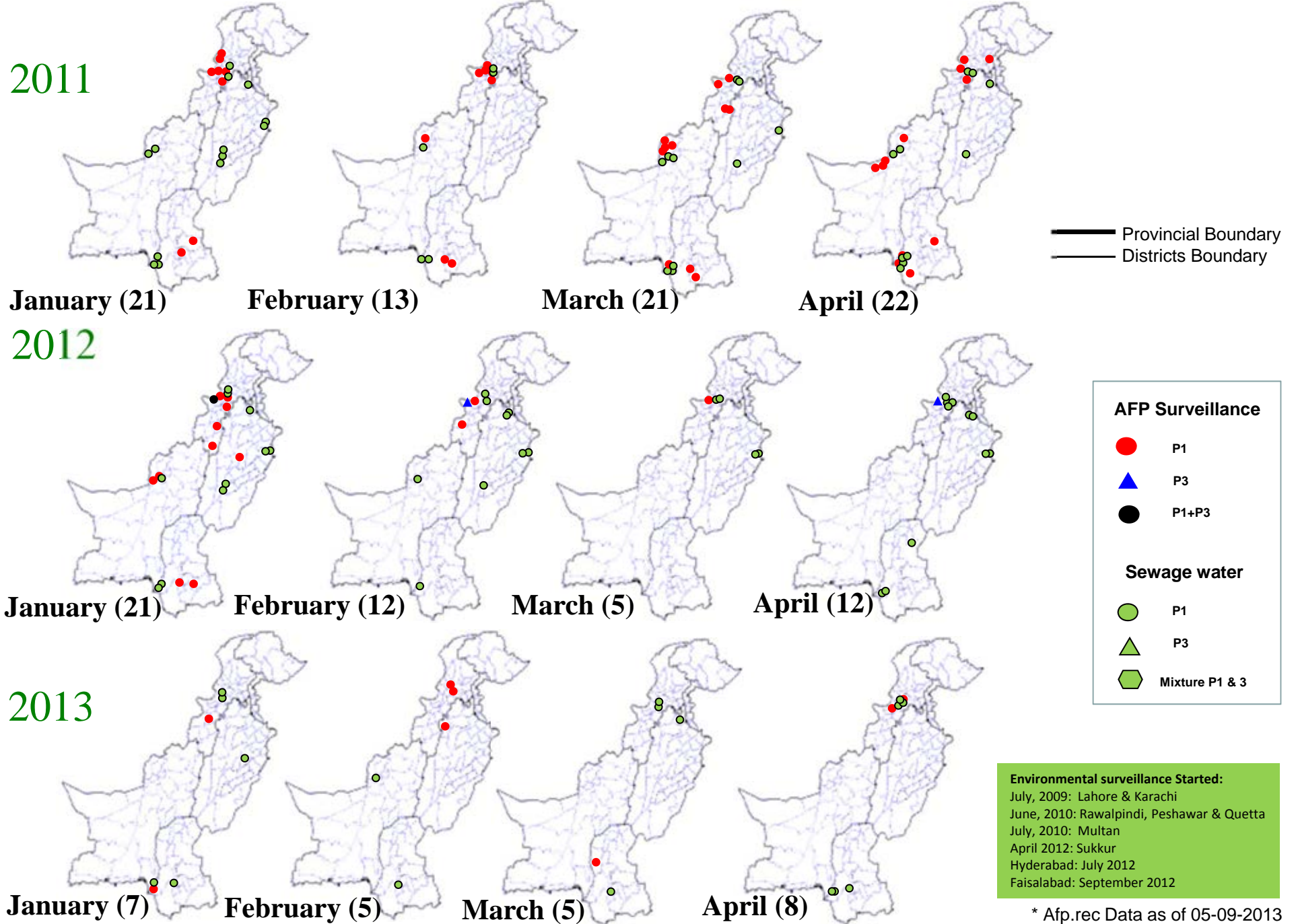
# Confirmed Polio Cases By Poliovirus Type, 2011-2013\*



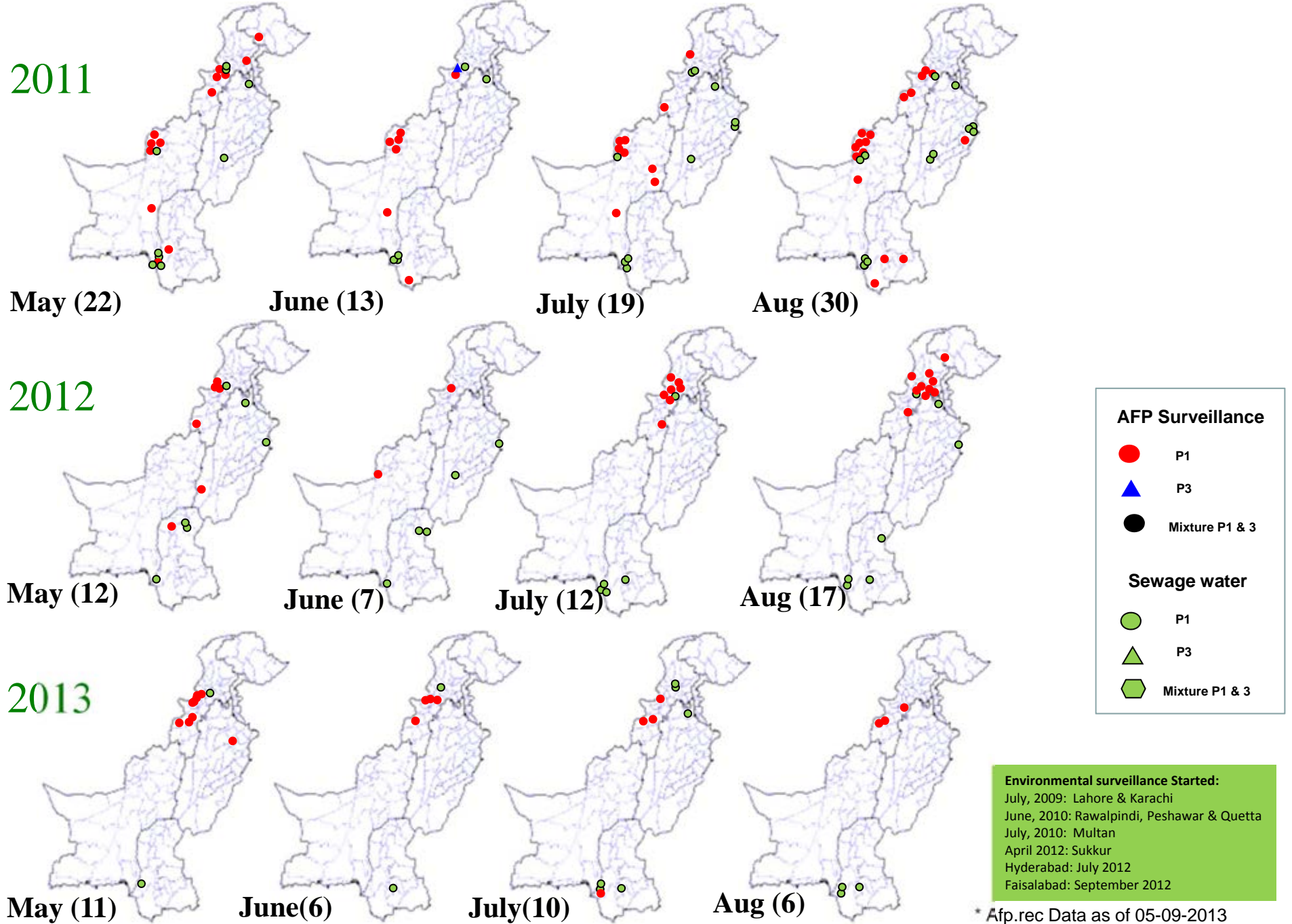
\* Data source AFP 05/09/2013



# Map 4: Monthly Comparison of P1 & P3 Polio Cases/Isolates 2011-2013\*

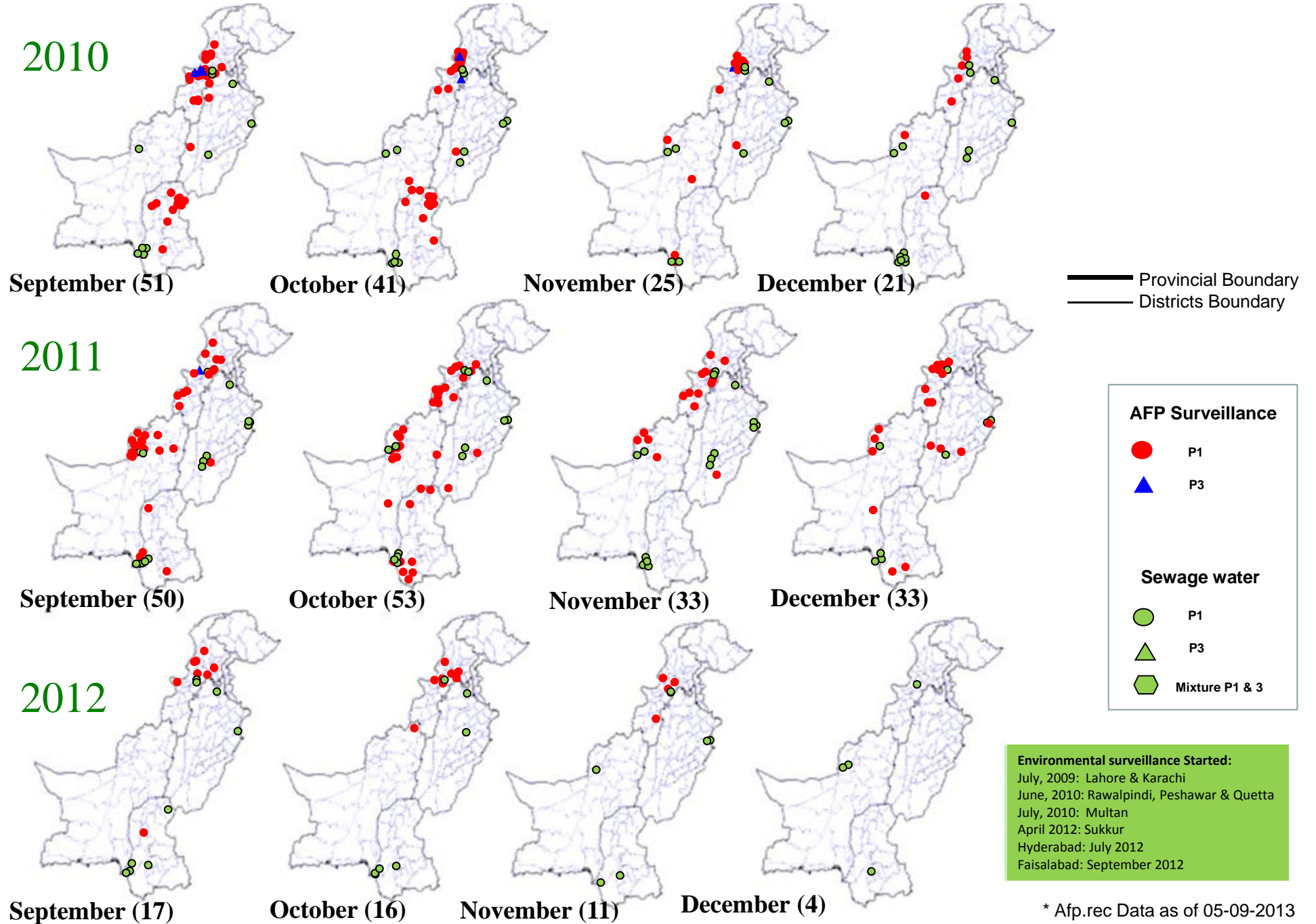


# Map 4.1: Monthly Comparison of P1 & P3 Polio Cases/Isolates 2011-2013\*



\* Afp.rec Data as of 05-09-2013

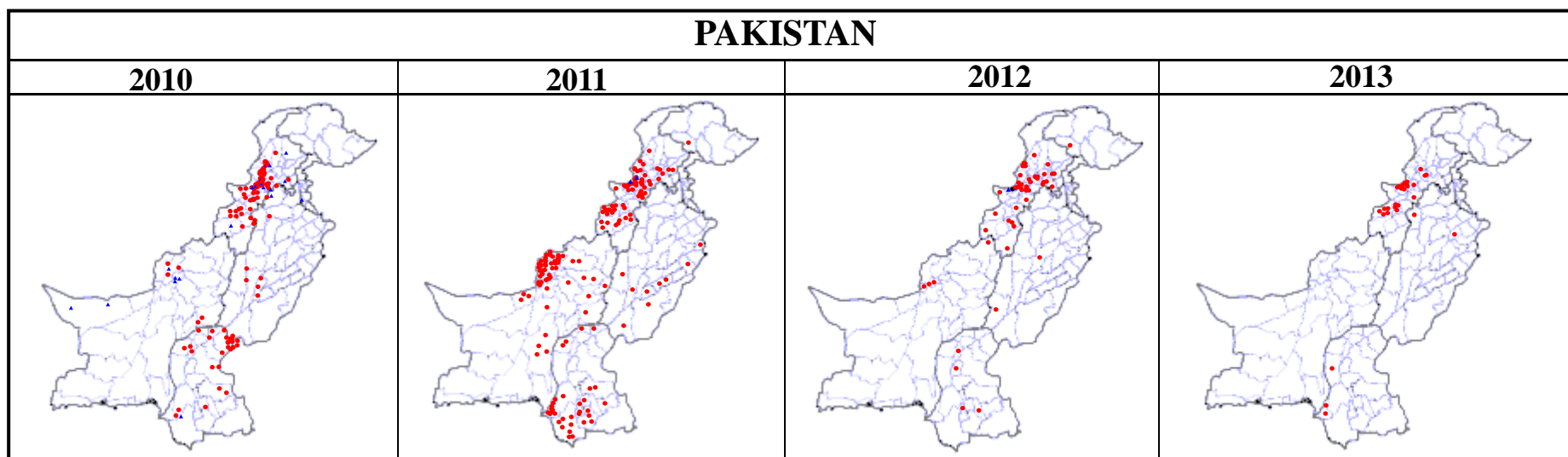
# Map 4.2: Monthly Comparison of P1 & P3 Polio Cases/Isolates 2010-2012\*



## Table 5: Polio Eradication Update, Pakistan 2010-2013\*

Province/Region	Polio 1				Polio 3				Total Wild			
	2010	2011	2012	2013	2010	2011	2012	2013	2010	2011	2012	2013
PUNJAB	6	9	2	2	1	0	-	-	7	9	2	2
SINDH	26	33	4	3	1	0	-	-	27	33	4	3
KP	19	23	27	6	5	0	-	-	24	23	27	6
FATA^	63	57	17	17	11	2	2	-	74	59	20^	17
BALUCHISTAN	6	73	4	-	6	0	-	-	12	73	4	-
AJK	0	0	-	-	0	0	-	-	0	0	-	-
Gilgit-Baltistan	0	1	1	-	0	0	-	-	0	1	1	-
ISLAMABAD	0	0	-	-	0	0	-	-	0	0	-	-
<b>PAKISTAN</b>	<b>120</b>	<b>196</b>	<b>55</b>	<b>28</b>	<b>24</b>	<b>2</b>	<b>2</b>	<b>-</b>	<b>144</b>	<b>198</b>	<b>58</b>	<b>28</b>

^ FATA reported mixture of NSL1 & NSL3



\* Afp.rec Data as of 05-09-2013

***Table 6: Vaccination status of non polio AFP cases age 6-59 months 2010-2013\****

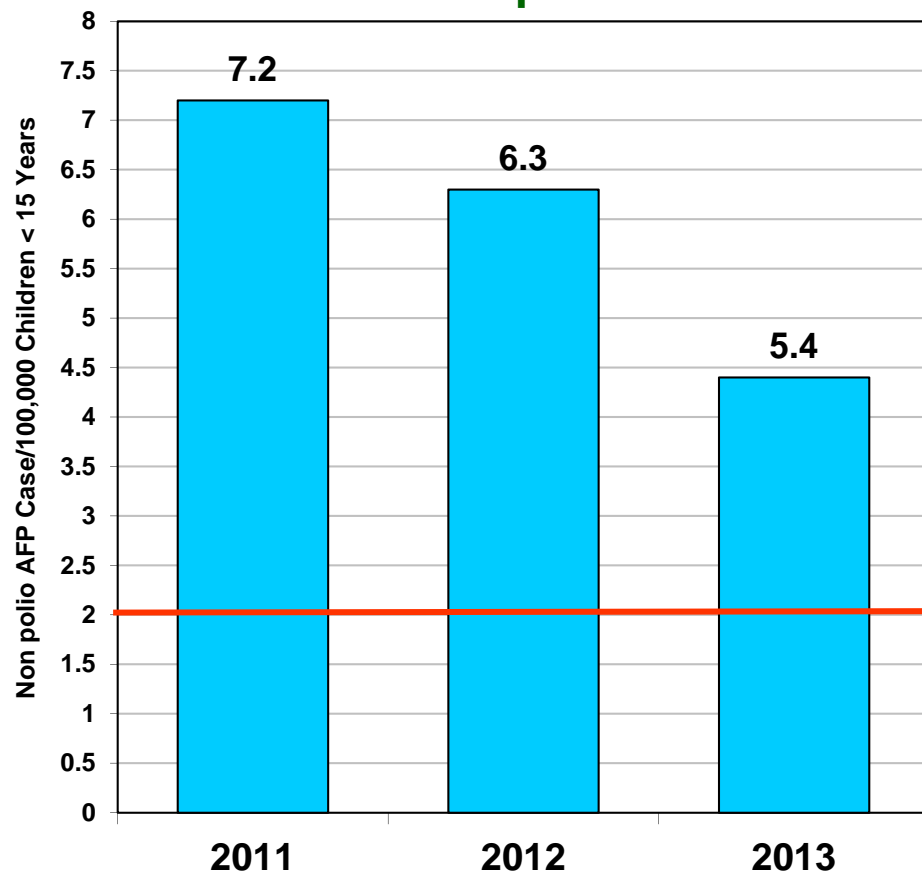
REGION	0 dose				1-2 doses				3 doses				4-6 doses				7+ doses			
	10	11	12	13	10	11	12	13	10	11	12	13	10	11	12	13	10	11	12	13
Central Punjab	0%	0%	0%	0%	1%	1%	0%	0%	1%	2%	0%	1%	7%	6%	4%	9%	91%	92%	95%	89%
North Punjab	0%	0%	0%	0%	0%	1%	0%	0%	2%	1%	0%	0%	6%	5%	4%	4%	91%	93%	96%	96%
South Punjab	0%	0%	0%	0%	1%	0%	0%	0%	0%	1%	0%	0%	5%	5%	4%	5%	94%	93%	96%	94%
<b>PUNJAB</b>	<b>0%</b>	<b>0%</b>	<b>0%</b>	<b>0%</b>	<b>1%</b>	<b>1%</b>	<b>0%</b>	<b>0%</b>	<b>1%</b>	<b>1%</b>	<b>0%</b>	<b>0%</b>	<b>6%</b>	<b>5%</b>	<b>4%</b>	<b>7%</b>	<b>92%</b>	<b>93%</b>	<b>96%</b>	<b>92%</b>
Karachi	2%	4%	1%	0%	0%	1%	1%	4%	3%	0%	2%	0%	7%	6%	6%	6%	88%	88%	90%	91%
North Sindh	0%	0%	0%	0%	1%	1%	0%	0%	0%	0%	1%	0%	4%	5%	4%	5%	95%	94%	94%	95%
South Sindh	0%	1%	0%	0%	1%	1%	1%	1%	1%	0%	2%	1%	9%	6%	4%	9%	89%	93%	93%	89%
<b>SINDH</b>	<b>1%</b>	<b>1%</b>	<b>0%</b>	<b>0%</b>	<b>1%</b>	<b>1%</b>	<b>1%</b>	<b>1%</b>	<b>1%</b>	<b>0%</b>	<b>1%</b>	<b>0%</b>	<b>7%</b>	<b>6%</b>	<b>4%</b>	<b>7%</b>	<b>91%</b>	<b>92%</b>	<b>93%</b>	<b>92%</b>
Central Khyber Pakhtunkhwa	1%	1%	2%	1%	0%	1%	1%	1%	1%	0%	0%	1%	2%	3%	2%	1%	97%	95%	95%	97%
North Khyber Pakhtunkhwa	2%	1%	2%	0%	1%	2%	2%	1%	2%	1%	2%	1%	6%	7%	9%	6%	89%	90%	85%	92%
South Khyber Pakhtunkhwa	3%	2%	2%	0%	3%	4%	1%	0%	3%	4%	1%	0%	14%	7%	9%	5%	76%	83%	87%	95%
<b>Khyber Pakhtunkhwa</b>	<b>1%</b>	<b>1%</b>	<b>2%</b>	<b>1%</b>	<b>1%</b>	<b>2%</b>	<b>1%</b>	<b>1%</b>	<b>2%</b>	<b>1%</b>	<b>1%</b>	<b>1%</b>	<b>6%</b>	<b>5%</b>	<b>6%</b>	<b>3%</b>	<b>90%</b>	<b>91%</b>	<b>89%</b>	<b>95%</b>
<b>FATA</b>	<b>14%</b>	<b>14%</b>	<b>18%</b>	<b>31%</b>	<b>11%</b>	<b>10%</b>	<b>6%</b>	<b>3%</b>	<b>6%</b>	<b>5%</b>	<b>3%</b>	<b>8%</b>	<b>18%</b>	<b>11%</b>	<b>12%</b>	<b>5%</b>	<b>51%</b>	<b>61%</b>	<b>62%</b>	<b>51%</b>
North Balochistan	12%	4%	12%	14%	0%	12%	10%	14%	4%	23%	3%	2%	12%	12%	17%	17%	72%	50%	57%	52%
Quetta Block	0%	31%	14%	11%	11%	10%	10%	11%	0%	3%	0%	0%	9%	14%	14%	11%	81%	43%	62%	68%
Rest of Balochistan	6%	7%	9%	7%	2%	2%	6%	3%	2%	5%	5%	3%	11%	10%	10%	24%	78%	76%	70%	62%
<b>BALUCHISTAN</b>	<b>5%</b>	<b>16%</b>	<b>8%</b>	<b>9%</b>	<b>4%</b>	<b>6%</b>	<b>8%</b>	<b>8%</b>	<b>2%</b>	<b>6%</b>	<b>3%</b>	<b>3%</b>	<b>11%</b>	<b>12%</b>	<b>17%</b>	<b>16%</b>	<b>78%</b>	<b>60%</b>	<b>64%</b>	<b>63%</b>
<b>PAKISTAN</b>	<b>1%</b>	<b>2%</b>	<b>1%</b>	<b>2%</b>	<b>1%</b>	<b>1%</b>	<b>1%</b>	<b>1%</b>	<b>1%</b>	<b>1%</b>	<b>1%</b>	<b>1%</b>	<b>7%</b>	<b>6%</b>	<b>5%</b>	<b>7%</b>	<b>89%</b>	<b>89%</b>	<b>92%</b>	<b>90%</b>

\* Afp.rec Data as of 05-09-2013

# Key Surveillance Indicators; 2011-2013\*

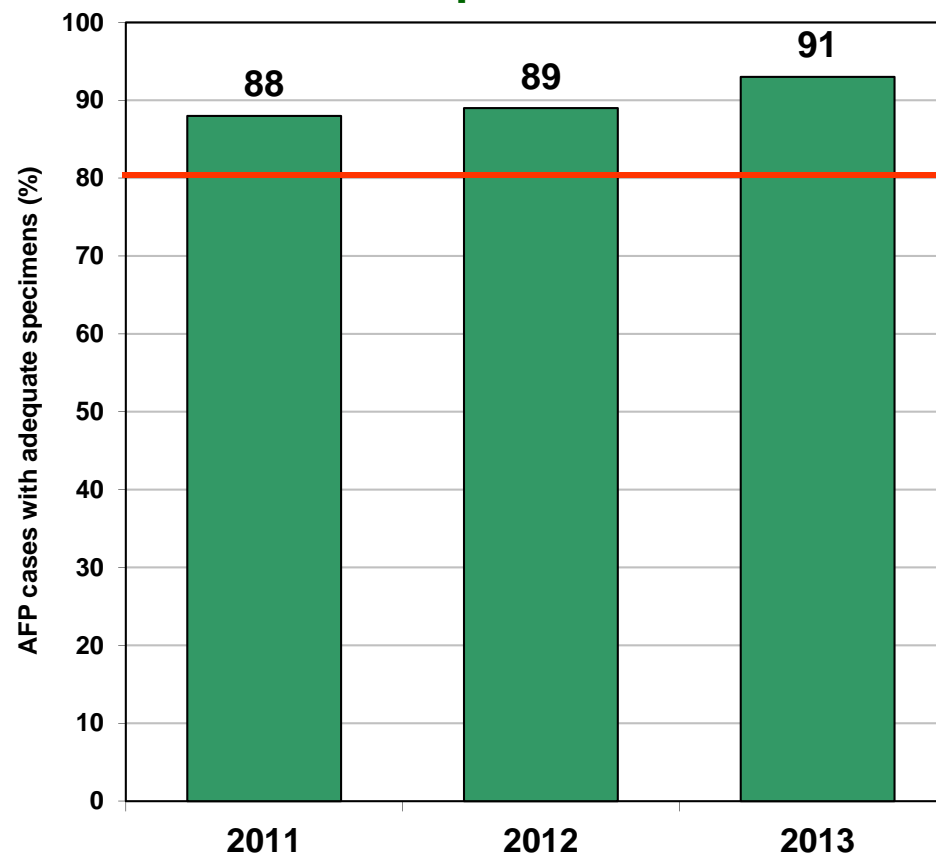
(Non polio AFP rate and % AFP cases with adequate specimens)

### Graph 3



■ Non Polio AFP Rate

### Graph 4



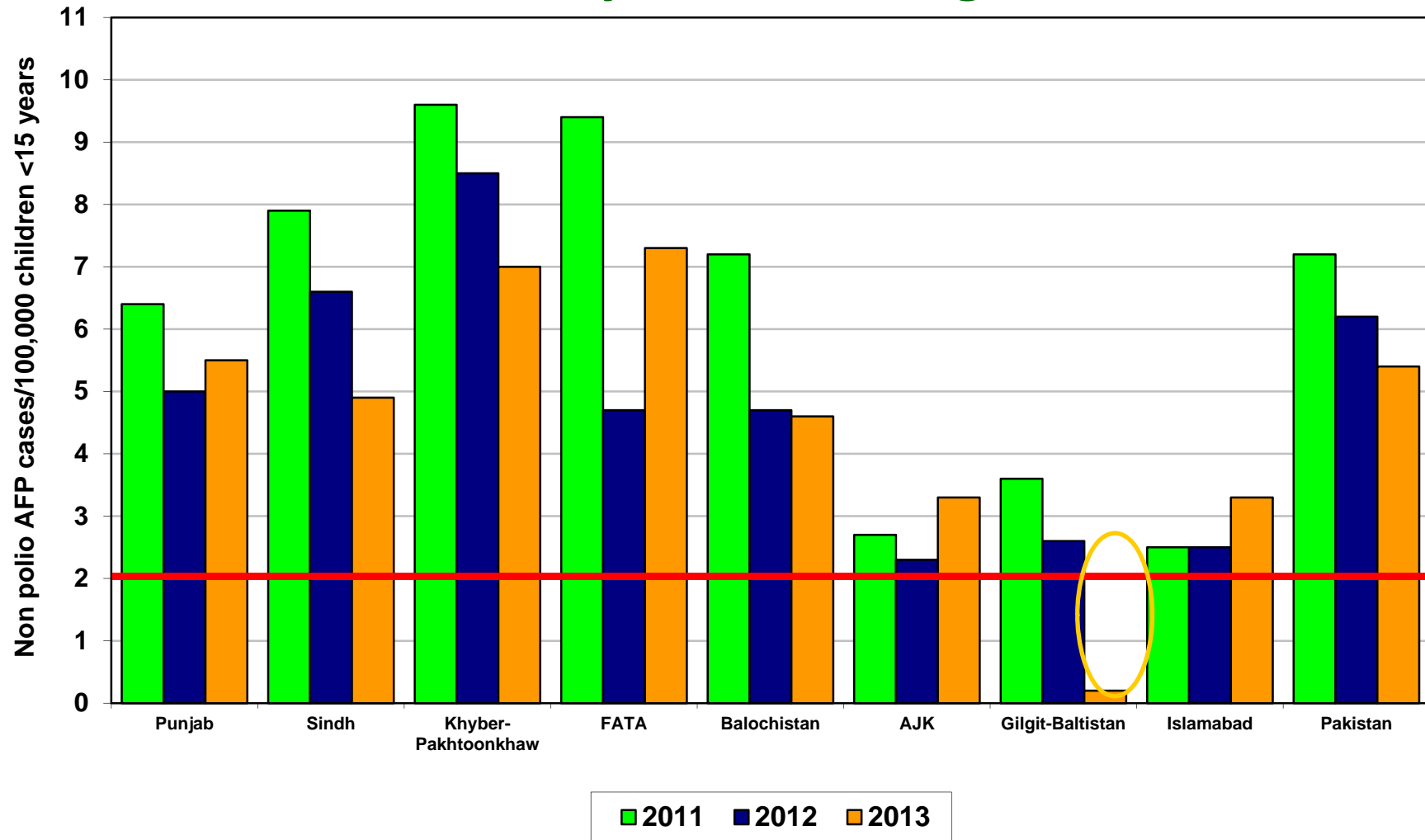
■ % AFP with Adequate Specimens

— Target

Non Polio AFP rate Up to Week No. 35 ended on 31<sup>st</sup> August, 2013

\* Afp.rec Data as of 05-09-2013

# Non Polio AFP Rate By Province/Regions, 2011-2013\*

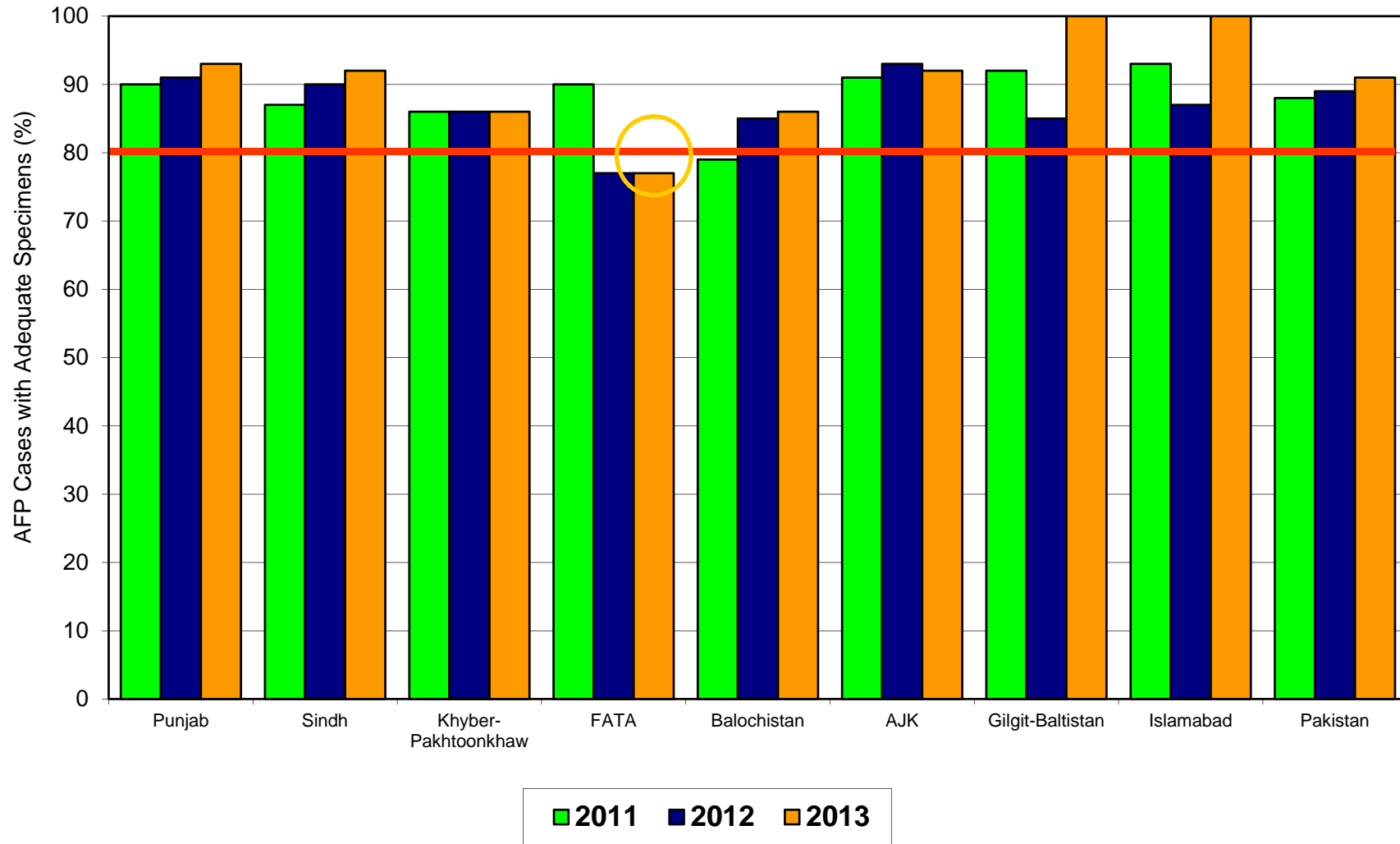


Non Polio AFP rate Up to Week No. 35 ended on 31<sup>st</sup> August, 2013

Target Non-Polio AFP Rate 2/ 100000 < 15 years of the age

\* Data source AFP 05/09/2013

# Percent AFP Cases with Adequate Specimens By Province/Regions, 2011-2013\*

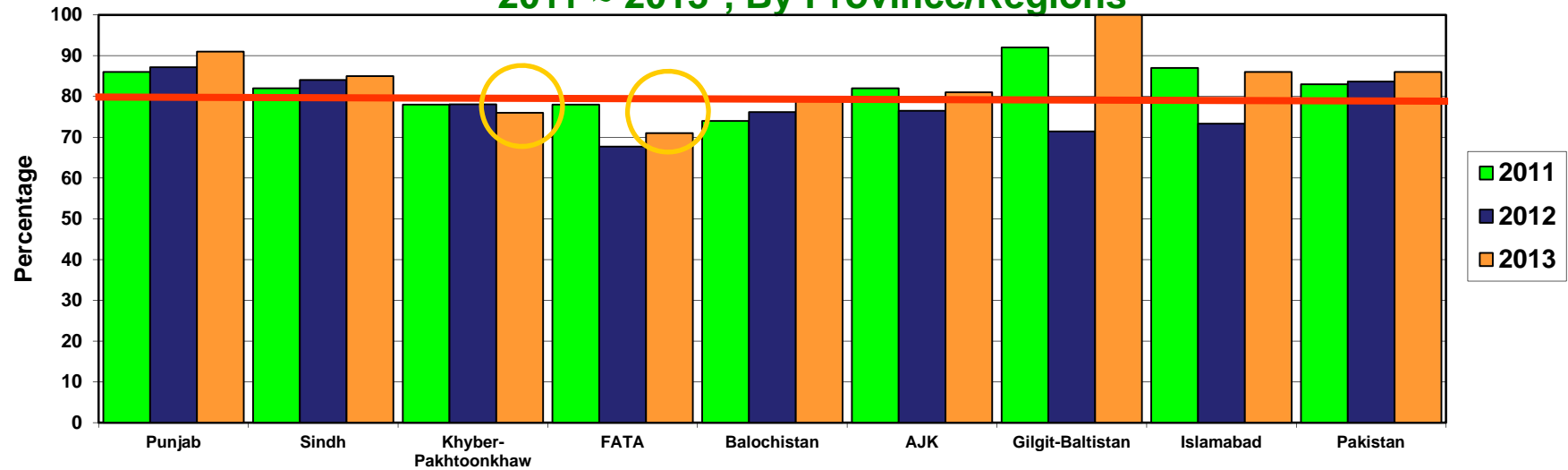


\* Data source AFP 05/09/2013

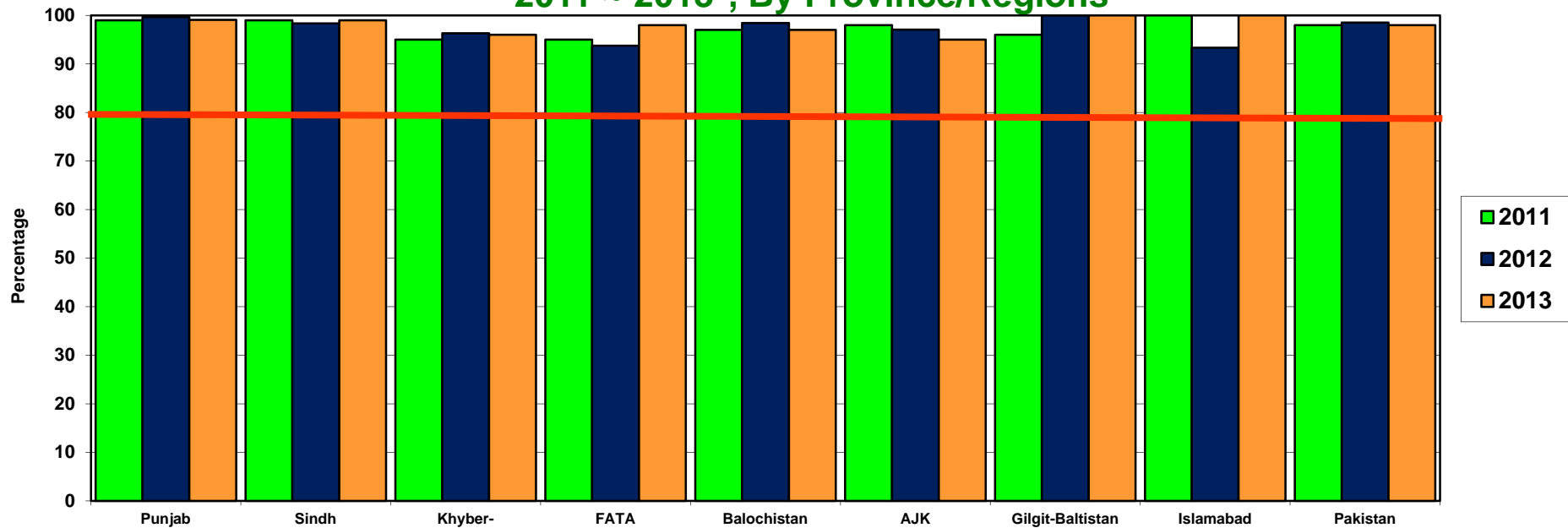
Target Adequate Sample cases = 80%



**Graph 5: Percent AFP Cases Notified within 07 days of paralysis onset  
2011 ~ 2013\*, By Province/Regions**



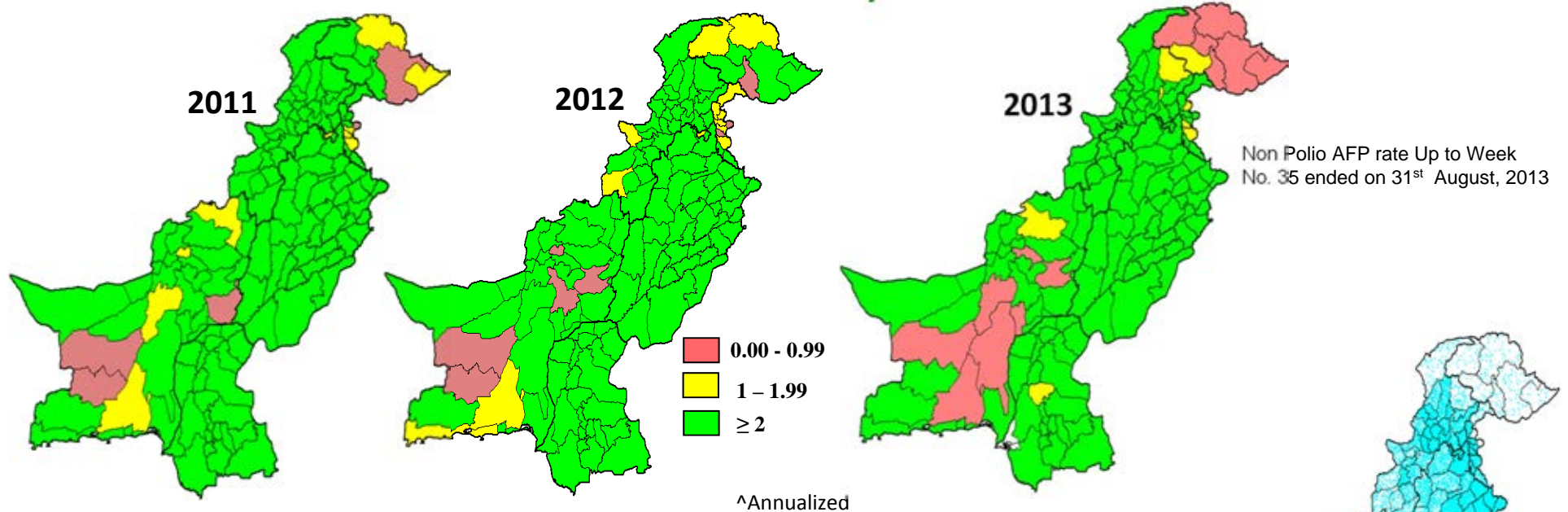
**Graph 6: Percent AFP Cases Investigated within 48 hours of notification  
2011 ~ 2013\*, By Province/Regions**



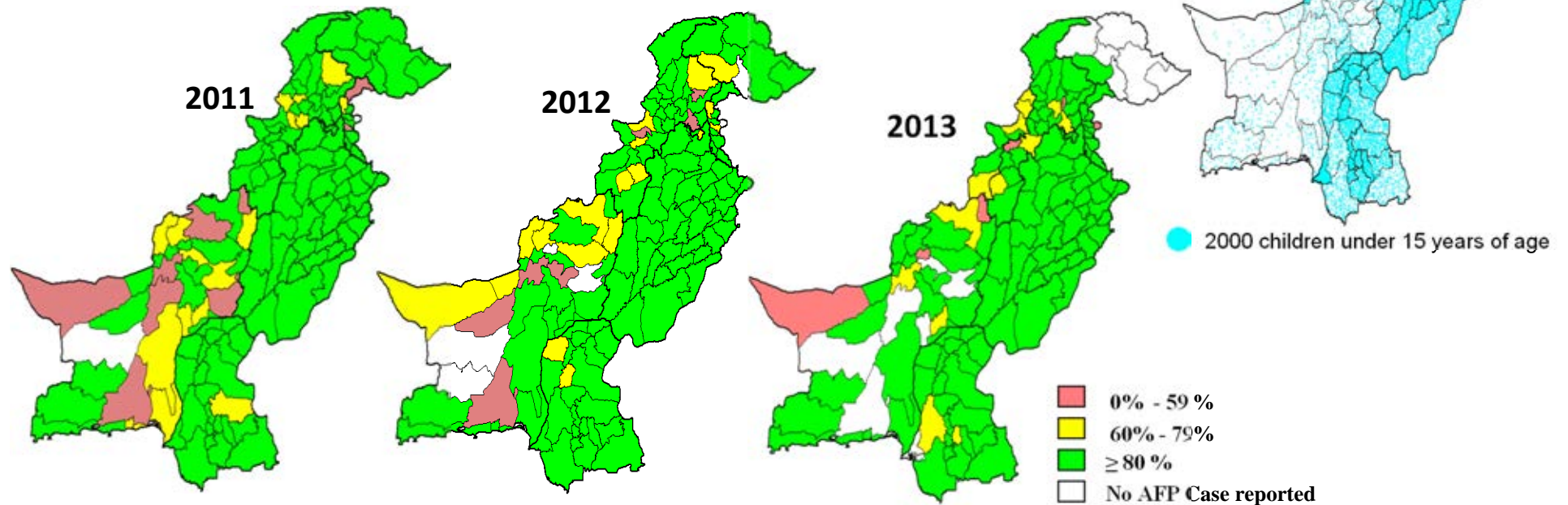
\* Afp.rec Data as of 05-09-2013

— Target

## Non-Polio<sup>^</sup> AFP Rate by District



## Percent AFP Cases with Adequate Specimens, by District



\* Data source AFP 05/09/2013

**Table 7: AFP CASES PENDING FOR CLASSIFICATION WITH DATE OF ONSET MORE THAN 90 DAYS\* 2013 (1/2)**

S. No	DISTRICT	TEHSIL	EPID	SEX	AGE	DONSET	DOSESE	DSTOOL1	DSTOOL2	LAB	FEVER	ASVM	PROG	FUP	PEND (DAYS)
1	KARAK	KARAK	KP/51/13/005	F	13	01-01-13	7+	15-02-13	17-02-13	EV	N	Y	Y	Y	247
2	KHYBER	LANDI KOTAL	FT/34/13/003	M	84	10-02-13	7+	25-02-13	27-02-13	NVI	Y	N	Y		207
3	KHYBER	JAMRUD	FT/34/13/004	F	16	22-01-13	7+	05-03-13	06-03-13	EV	Y	Y	Y		226
4	MARDAN	MARDAN	KP/40/13/007	M	29	17-01-13	7+	06-02-13	07-02-13	EV	Y	Y	Y	Y	231
5	PESHAWAR	PESHAWAR	KP/30/13/008	M	96	15-01-13	7+	26-02-13	27-02-13	NVI	N	N	Y	Y	233
6	SWAT	SWAT	KP/24/13/004	M	120	20-02-13	7+	Child Died Before Stool Collection			Y	N	Y	DIED	197
7	WAZIR-N	MIRAN SHAH	FT/64/13/001	M	96	08-02-13	6	13-02-13		NVI	Y	N	Y	DIED	209
8	FAISALABAD	TANDLIAN WALA	PB/51/13/049	F	18	22-05-13	7+	27-06-13	28-06-13	NVI	Y	Y	UK	Y	106
9	LODHRAN	LODHRAN	PB/64/13/035	M	84	22-05-13	7+	14-07-13	15-07-13	NVI	N	N	Y	Y	106
10	MULTAN	JALALPUR PIRWALA	PB/61/13/046	M	76	18-05-13	7+	17-06-13	19-06-13	NVI	Y	Y	Y	Y	110
11	OKARA	DEPALPUR	PB/34/13/031	M	24	27-05-13	7+	07-07-13	08-07-13	EV	N	Y	Y	Y	101
12	RAJANPUR	RAJANPUR	PB/82/13/036	F	6	03-06-13	5	07-07-13	08-07-13	EV	Y	Y	Y	Y	94
13	RAWALPINDI	RAWALPINDI	PB/11/13/028	M	132	13-05-13	7+	03-06-13	05-06-13	NVI	N	N	Y	Y	115
14	SHEIKUPURA	FEROZEWALA	PB/33/13/030	M	144	22-05-13	7+	14-06-13	15-06-13	NVI	N	Y	Y	Y	106
15	SHEIKUPURA	SHEIKHUPURA	PB/33/13/032	M	98	02-06-13	7+	28-06-13	30-06-13	NVI	Y	N	Y	Y	95
16	HYDERABAD	HYDERABAD RURAL	SD/21/13/006	M	84	01-04-13	7+	Child Died Before Stool Collection			Y	N	Y	DIED	157
17	JACOBABAD	THUL	SD/53/13/013	M	156	16-05-13	7+	11-06-13	15-06-13	NVI	Y	Y	Y	Y	112
18	JAMSHORO	T.B.KHAN	SD/25/13/009	F	18	03-05-13	7+	25-05-13	12-06-13	NVI	N	N	Y	Y	125
19	KAMBAR	WARAH	SD/55/13/006	M	96	01-01-13	7+	Late Notified			N	Y	Y	Y	247
20	KASHMORE	KANDHKOT	SD/54/13/002	M	54	27-05-13	7+				N	N	Y		101
21	KHIGADAP	GADAP	SD/63/13/010	F	42	02-06-13	7+	Child Died Before Stool Collection			Y	N	Y	DIED	95
22	KHIJAMSHEED	JAMSHEED	SD/66/13/004	F	60	01-05-13	7+				Y	N	Y	DIED	127
23	KHISADDAR	SADDAR	SD/77/13/004	F	38	05-04-13	7+	10-05-13	11-05-13	NVI	N	N	Y	Y	153
24	NFEROZ	BHIRIA	SD/45/13/003	F	144	05-02-13	7+	Child Died Before Stool Collection			Y	Y	Y	DIED	212
25	NFEROZ	MORO	SD/45/13/013	F	54	10-05-13	7+	01-06-13	02-06-13	NVI	N	Y	Y	Y	118
26	SANGHAR	KHIPRO	SD/32/13/005	M	144	05-03-13	7+	Late Notified			N	N	Y	Y	184
27	T.ALLAHYAR	TANDO ALLAHYAR	SD/27/13/009	M	4	28-05-13	4	24-06-13	25-06-13	NVI	Y	Y	Y	Y	100
28	THATTA	SUJAWAL	SD/22/13/027	M	48	20-05-13	7+	23-06-13	25-06-13	NVI	Y	N	Y		108
29	THATTA	THATTA	SD/22/13/032	M	72	06-06-13	7+	15-07-13	16-07-13	NVI	Y	Y	Y	Y	91
30	BANNU	BANNU	KP/61/13/010	M	53	30-04-13	7+	Late Notified			Y	N	N	Y	128
31	BUNIR	DAGGAR	KP/22/13/008	M	35	12-03-13	7+	01-04-13	02-04-13	NVI	Y	Y	Y	Y	177
32	BUNIR	DAGGAR	KP/22/13/007	M	132	28-02-13	7+	30-03-13	31-03-13	NVI	N	N	Y	Y	189
33	BUNIR	DAGGAR	KP/22/13/015	M	72	01-01-13	7+	Late Notified			Y	Y	Y	Y	247
34	BUNIR	DAGGAR	KP/22/13/023	M	64	01-06-13	7+	18-07-13	19-07-13	NVI	Y	N	Y		96
35	DIKHAN	KULACHI	KP/60/13/013	F	18	22-04-13	5	16-06-13	17-06-13	VACC	N	Y	Y	Y	136
36	DIRLOWER	SAMAR BAGH	KP/23/13/015	F	13	30-01-13	7+	Late Notified			Y	Y	Y	Y	218
37	HANGU	HANGU	KP/54/13/004	F	30	05-06-13	7+	05-07-13	06-07-13	EV	Y	N	Y	Y	92
38	HARIPUR	HARIPUR	KP/12/13/005	M	66	18-01-13	7+	19-02-13	20-02-13	EV	N	N	Y	Y	230
39	HARIPUR	HARIPUR	KP/12/13/012	F	20	18-04-13	7+	19-05-13	20-05-13	EV	Y	Y	Y	Y	140
40	KOHAT	LACHI	KP/50/13/012	M	96	28-05-13	7+	26-06-13	27-06-13	NVI	N	N	Y	Y	100
41	KOHAT	LACHI	KP/50/13/015	M	21	15-05-13	7+	Late Notified			Y	Y	Y		113
42	LAKKIMRWT	LAKKIMRWT	KP/62/13/018	M	26	22-05-13	7+	21-06-13	22-06-13		N	Y	Y	Y	106

€ Based on recall of parents

\* Afp.rec Data as of 05-09-2013

60 days Follow-up not done

FUP = Residual Weakness at 60 days follow up.

**Table 7.1: AFP CASES PENDING FOR CLASSIFICATION WITH DATE OF ONSET MORE THAN 90 DAYS\* 2013 (2/2)**

S. No	DISTRICT	TEHSIL	EPID	SEX	AGE	DONSET	DOSES€	DSTOOL1	DSTOOL2	LAB	FEVER	ASVM	PROG	FUP	PEND (DAYS)
43	MANSEHRA	MANSEHRA	KP/14/13/005	M	168	17-03-13	7+	Child Died Before Stool Collection			N	N	Y	DIED	172
44	MANSEHRA	MANSEHRA	KP/14/13/010	F	9	01-06-13	6	17-06-13	19-06-13	NVI	Y	N	Y	DIED	96
45	MARDAN	TAKHT BHAJ	KP/40/13/034	M	5	10-03-13	6	Late Notified			N	Y	UK	Y	179
46	NOWSHERA	NOWSHERA	KP/32/13/012	F	108	15-03-13	7+	Child Died Before Stool Collection			Y	N	Y	DIED	174
47	PESHAWAR	PESHAWAR	KP/30/13/022	F	22	06-02-13	7+	Late Notified			N	N	N	Y	211
48	PESHAWAR	PESHAWAR	KP/30/13/026	M	24	17-04-13	0	17-05-13	19-05-13	EV	Y	Y	Y	Y	141
49	PESHAWAR	PESHAWAR	KP/30/13/039	F	54	03-05-13	7+	14-06-13	15-06-13	EV	Y	Y	Y	Y	125
50	SHANGLA	MARTOONG	KP/26/13/001	M	72	08-01-13	7+	Late Notified			Y	Y	Y	LOST	240
51	SHANGLA	CHAKISAR	KP/26/13/008	F	36	01-06-13	7+	27-06-13	03-07-13	NVI	Y	Y	Y		96
52	SWAT	SWAT	KP/24/13/006	F	132	02-04-13	7+	10-04-13		NVI	N	N	Y	DIED	156
53	SWAT	SWAT	KP/24/13/009	M	16	19-04-13	7+	14-05-13	15-05-13	NVI	Y	N	N	Y	139
54	TANK	TANK	KP/63/13/005	M	42	25-02-13	7+	27-04-13	28-04-13	NVI	Y	N	UK	Y	192
55	KABDULAH	CHAMAN	BN/14/13/005	F	25	30-05-13	7+	14-06-13	15-06-13	NVI	Y	N	Y	Y	98
56	MASTUNG	MASTUNG	BN/51/13/001	M	9	25-05-13	0	12-06-13	14-06-13	EV	Y	Y	Y		103
57	QUETTA	QUETTA CITY	BN/11/13/006	F	9	12-04-13	7+	27-05-13	28-05-13	NVI	N	Y	Y	Y	146
58	QUETTA	QUETTA CITY	BN/11/13/008	F	156	27-05-13	7+	Late Notified			N	N	Y	Y	101
59	ZHOB	ZHOB	BN/21/13/002	F	84	05-05-13	7+	30-05-13	31-05-13	NVI	Y	Y	Y	Y	123
60	BAGH	BAGH	AJ/50/13/001	M	80	23-01-13	7+	17-02-13	18-02-13	NVI	N	N	Y	Y	225
61	BAJOUR	MAMUND	FT/33/13/007	M	45	02-01-13	7+	Late Notified			N	Y	Y	Y	246
62	KHYBER	LANDI KOTAL	FT/34/13/005	M	132	09-03-13	7+	12-03-13		EV	N	N	Y		180
63	KHYBER	JAMRUD	FT/34/13/002	F	24	18-01-13	7+	21-02-13	23-02-13	NVI	N	Y	Y		230
64	KHYBER	BARA	FT/34/13/016	F	10	06-06-13	0	21-06-13	23-06-13	NVI	Y	Y	Y		91
65	MOHMAND	PINDIALI	FT/35/13/006	F	17	05-05-13	7+	17-06-13	18-06-13	NVI	Y	Y	Y		123
66	MOHMAND	UPPER MOHMAND	FT/35/13/003	F	18	18-04-13	7+	07-05-13	08-05-13	NVI	Y	Y	Y		140
67	MOHMAND	PINDIALI	FT/35/13/002	M	24	13-03-13	7+	28-03-13	29-03-13	VACC	UK	Y	Y		176
68	WAZIR-N	MIRAN SHAH	FT/64/13/007	M	48	25-04-13	5	10-05-13	12-05-13	NVI	Y	N	Y	Y	133

€ Based on recall of parents

\* Afp.rec Data as of 05-09-2013

60 days Follow-up not done

FUP = Residual Weakness at 60 days follow up.