



**World Health
Organization**

Weekly AFP Surveillance Update Pakistan

Week 34 (*Ended on 24th August, 2013*)

AFP Surveillance



National Surveillance Cell Federal EPI

World Health Organization Country Office,
Chak Shahzad, Park Road,
Islamabad, Pakistan

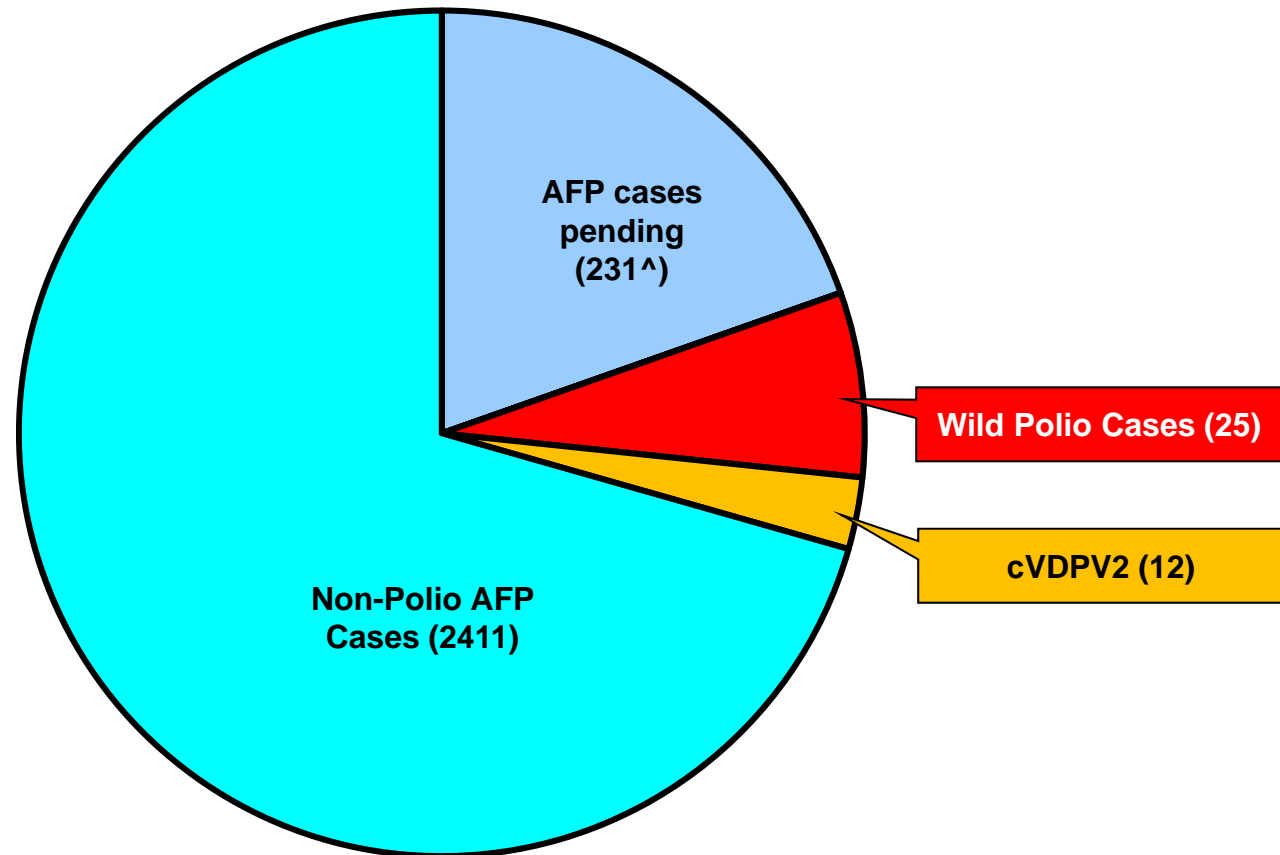
Tel: +92-51 9255123 / 9255282 /9255184

Fax: +92-51 9255274

Email: epidata@pak.emro.who.int

Web site: www.whopak.org

AFP Case Profile, 2013*



Total AFP Cases Reported = 2679

[^]57 Inadequate cases pending classification by ERC;
[^]68 Inadequate cases not due for FUP
[^]106 Pending in the Lab

Comparison of polio cases by province/region 2012[§] & 2013*

Region/ Province	No. of polio cases		No. of infected districts/towns		Last polio case
	2012	2013	2012	2013	
Khyber Pakhtunkhwa	14	5	11	4	30-June-13
FATA / FR Areas	14	15	4	3	27-July-13
Sindh	3	3	3	3	09-July-13
Balochistan	3	-	1	-	02-Oct-12
Punjab	2	2	2	2	26-May-13
Gilgit-Baltistan	1	-	1	-	06-Aug-12
Pakistan	37	25	22	12	27-July-13

Five additional districts/town declared infected based on environmental samples 2013

Total polio cases of 2012 are 58

* Afp.rec Data as of 22-08-2013

§Based on date of onset

Table 1: List of Confirmed Polio Cases, Pakistan 2013* (1/2)

S.NO.	PROVINCE/ REGION	DISTRICT	TEHSIL	EPID NO.	SEX	AGE (m)	DATE ONSET OF PARALYSIS	NO. OPV DOSES (based on parents recall)		FEVER	Asymmetric Paralysis	Rapid Progression	REFUSAL	WPV TYPE	GENETICS
								Route	SIAs						Cluster
1	SINDH	BIN QASIM	BIN QASIM	SD/62/13/001	M	24	14-Jan-13	0	0	N	Y	Y	Y	NSL1	R4
2	KP	BANNU	BANNU	NW/61/13/002	M	13	26-Jan-13	0	0	Y	N	Y	Y	NSL1	R4
3	KP	MALAKAND	DARGAI	NW/20/13/006	F	3	08-Feb-13	2	2	Y	N	Y	N	NSL1	R4
4	KP	MARDAN	MARDAN	NW/40/13/009	M	30	12-Feb-13	3	7+	Y	N	Y	N	NSL1	R4
5	PUNJAB	MIWANWALI	ISAKHEL	PB/43/13/005	F	36	07-Feb-13	3	7+	Y	N	Y	N	NSL1	R4
6	SINDH	DADU	MEHAR	SD/24/13/006	F	15	22-Mar-13	0	2	Y	N	Y	N	NSL1	R2
7	KP	MARDAN	MARDAN	NW/40/13/026	M	8	22-Apr-13	0	0	Y	Y	Y	Y	NSL1	R4
8	FATA	KHYBER\$	BARA	FT/34/13/008	M	10	24-Apr-13	2	4	Y	Y	N	N	NSL1	R4
9	FATA	FR BANNU	FR BANNU	FT/69/13/001	M	16	3-May-13	0	3	Y	Y	Y	Y	NSL1	R4
10	FATA	KHYBER\$	BARA	FT/34/13/010	M	8	10-May-13	0	0	Y	Y	Y	N	NSL1	R4
11	FATA	KHYBER\$	BARA	FT/34/13/011	M	23	14-May-13	0	2	Y	Y	Y	N	NSL1	R4
12	FATA	KHYBER\$	BARA	FT/34/13/012	M	4	16-May-13	0	0	Y	N	Y	N	NSL1	R4
13	FATA	KHYBER\$	BARA	FT/34/13/013	M	24	11-May-13	2	3	Y	N	Y	N	NSL1	R4
14	FATA	FR BANNU	FR BANNU	FT/69/13/002	F	22	19-May-13	0	7+	Y	N	Y	N	NSL1	R4
15	FATA	KHYBER\$	BARA	FT/34/13/014	M	30	20-May-13	0	0	Y	N	Y	N	NSL1	R4
16	PUNJAB	MBDIN	MALIKWAL	PB/24/13/013	F	96	26-May-13	3	7+	Y	Y	Y	N	NSL1	R4
17	FATA	KHYBER\$	BARA	FT/34/13/015	M	15	06-June-13	0	0	Y	Y	Y	N	NSL1	R4
18	FATA	WAZIR-N\$	MIR ALI	FT/64/13/010	M	9	24-May-13	0	0	Y	Y	Y	N	NSL1	R4
19	FATA	WAZIR-N\$	MIR ALI	FT/64/13/014	F	11	15-June-13	0	0	Y	Y	Y	N	NSL1	R4
20	FATA	KHYBER\$	BARA	FT/34/13/019	F	12	23-June-13	0	0	Y	N	Y	N	NSL1	R4
21	KP	PESHAWAR	PESHAWAR	KP/30/13/042	M	12	30-June-13	0	0	Y	N	Y	Y	NSL1	R4
22	FATA	KHYBER\$	BARA	FT/34/13/020	F	12	03-July-13	0	0	N	N	Y	N	NSL1	

\$ Security compromised area

* Afp.rec Data as of 22-08-2013

Table 1.1: List of Confirmed Polio Cases, Pakistan 2013* (2/2)

S.NO.	PROVINCE/ REGION	DISTRICT	TEHSIL	EPID NO.	SEX	AGE (m)	DATE ONSET OF PARALYSIS	NO. OPV DOSES (based on parents recall)		FEVER	Asymmetric Paralysis	Rapid Progression	REFUSAL	WPV TYPE	GENETICS
								Routi ne	SIA's						Cluster
23	SINDH	KHIGADDAP	GADDAP	SD/63/13/015	F	12	09-July-13	3	6	Y	Y	Y	N	NSL1	
24	FATA	WAZIR-N\$	MIR AN SHAH	FT/64/13/018	F	18	13-July-13	0	0	Y	Y	Y	N	NSL1	
25	FATA	FR BANNU	FR BANNU	FT/69/13/006	M	18	27-July-13	0	7+	Y	N	Y	N	NSL1	

\$ Security compromised area

New Case

* Afp.rec Data as of 22-08-2013

Table 2: LAB Update 2013*

Month of Onset	AFP Cases	No virus isolated	Cases Under Process		Isolated Viruses from stools						
			Culture	ITD	Vaccine viruses		NPEV		Wild	Results within 14 days	
			n	n	n	%	n	%	n	n	%
January	333	275	0	0	19	6	37	11%	2	333	100%
February	330	285	0	0	16	5	26	8%	3	330	100%
March	308	248	0	0	7	2	52	17%	1	308	100%
April	352	244	0	0	22	6	84	24%	2	352	100%
May	419	304	0	0	15	4	91	22%	9	419	100%
June	469	325	1	0	21	4	118	25%	4	468	100%
July	378	228	3	6	12	3	125	33%	4	369	98%
August	174	37	108	6	0	0	23	13%	0	60	34%
Pakistan	2763	1946	112	12	112	4	556	20%	25	2639	96%

* Data as of 22-08-2013

Table 3: Urgent / ITD Pending Cases (1/2)

S. #	Basic information									OPV doses				Urgent		Prov Diagnosis	Lab update			Remarks
	District	Tehsil	Union council	Epid number	Date of Onset	Age (M)	Sex	Date of 1st stool	Stool Adeq	Rt	SIAs	Last 6 SIAs	Last dose	By Field	By NSC χ		Lab No.	Days Inoc	Culture update	
Isolates pending for ITSD																				
1	KHYBER	BARA	MILWARD	FT/34/13/023	14-Aug-13	24	M	16-Aug-13	N	0	0	0		Y	Y	SUSPECTED POLIO	3466	2	SL2	Waiting rRTPCR for VDPV
2	WAZIR-N	MIR ALI	HAIDER KHEL	FT/64/13/020	20-Jul-13	6	M	25-Jul-13	Y	0	0	0		Y	Y	POLIO / INI NEURITIS	3145	1	P2	Discordant \cup
3	WAZIR-N	MIR ALI	SAIDGAI	FT/64/13/021	22-Jul-13	12	M	26-Jul-13	Y	3	0	0		N	Y	GBS	3179	7	P2	Discordant \cup
4	WAZIR-N	RAZMAK	DOSALI	FT/64/13/022	24-Jul-13	24	M	01-Aug-13	Y	0	6	0	23-Apr-12	N	N	GBS	3257	14	P2	Discordant \cup
5	WAZIR-N	MIR ALI	KHUSHALI	FT/64/13/023	31-Jul-13	12	M	03-Aug-13	Y	0	0	0		Y	Y	POLIO / GBS	3302	7	P2	Discordant \cup
6	WAZIR-N	MIR ALI	TAPPI	FT/64/13/025	09-Aug-13	10	F	14-Aug-13	Y	0	0	0		Y	Y	GBS	3404	3	P2	Discordant \cup
7	WAZIR-N*	MIR ALI	ESOOREY	FT/64/13/027	05-Aug-13	14	M	14-Aug-13	#	0	3	0		Y	Y	POLIO / INI NEURITIS	3386	10	L20B+	INACCESSIBLE SINCE JUNE 2012
8	WAZIR-N	SPINWAM	Mobali	FT/64/13/029	05-Aug-13	12	M	18-Aug-13	Y	0	0	0		Y	Y	Polio/Injection Neuritis/GBS	3465	2	SL2	Waiting rRTPCR for VDPV
9	WAZIR-N	MIR ALI	Shalki Khel	FT/64/13/032	05-Aug-13	21	F	18-Aug-13	#	0	0	0		Y	Y	POLIO / GBS / TM / ATAXIA	3472	2	L20B+	
10	FAISALABAD*	#		PB/51/13/062	10-Aug-13	36	M	14-Aug-13		#	#		24-Jun-13	N		#	3410	7	L20B+	
11	GHOTKI	GHOTKI	BANDH	SD/42/13/041	20-Jul-13	18	M	23-Jul-13	Y	3	7+	6	17-Jun-13	N	N	HEMIPLEGIA/CVA	3127	7	P1	Discordant \cup
12	KHIGADAP	GADAP	4	SD/63/13/011	03-Jul-13	24	F	19-Jul-13	N	3	5	3	02-May-13	N	N	GBS	3065	5	P2	Discordant \cup
Reported urgent (by field / NSCχ criteria)																				
13	KABDULAH	GULISTAN	ABDULREHMANZA	BN/14/13/006	31-Jul-13	36	F	05-Aug-13	Y	0	2	0		N	Y	MENINGITIS/ACH	3426	7	UP	REFUSAL
14	KHYBER	BARA	AKA KHEL	FT/34/13/022	02-Aug-13	18	M	06-Aug-13	Y	0	2	0	05-Jan-13	Y	Y	INI NEURITIS	3339	10	UP	INACCESSIBLE AREA
15	WAZIR-N	MIR ALI	LPEE	FT/64/13/026	10-Aug-13	12	M	12-Aug-13	Y	0	0	-		Y	Y	POLIO / INI NEURITIS	3379	10	UP	
16	WAZIR-N	MIRAN SHAH	Darpakhel	FT/64/13/028	09-Aug-13	10	M	17-Aug-13	Y	0	0	0		Y	Y	POLIO / GBS	3464	5	UP	
17	WAZIR-N	SPINWAM	Epi Faqir	FT/64/13/030	09-Aug-13	9	M		#	0	0	0		Y	Y	Bulbar Polio/GBS	#			SPECIMENS NOT RECEIVED IN LAB
<p>* New L20B+ #Data not available χ NSC Criteria = Fever, Rapid Progress, Age < 48 months and OPV Doses < 7 UP = Under process</p> <p style="text-align: center;">Urgent (Field/NSC) / Inadequate specimens / Age 12-35 months / Zero OPV dose \cupPending for genomic sequencing</p>																				

* Data as of 26-08-2013

Table 3.1: Urgent / ITD Pending Cases (2/2)

S. #	Basic information									OPV doses				Urgent		Prov Diagnosis	Lab update			Remarks
	District	Tehsil	Union council	Epid number	Date of Onset	Age (M)	Sex	Date of 1st stool	Stool Adeq	RI	SIA _s	Last 6 SIA _s	Last dose	By Field	By NSCV		Lab No.	Days Inoc	Culture update	
18	WAZIR-N	MIR ALI	DARPAKHEL	FT/64/13/031	12-Aug-13	11	F	17-Aug-13	Y	0	0	0		Y	Y	POLO / GBS	3493	5	UP	
19	WAZIR-N	RAZMAK	MUSSAKI	FT/64/13/033	11-Aug-13	11	M	16-Aug-13	Y	0	0	0		Y	Y	POLO/TRALUMA	3506	4	UP	INACCESSIBLE SINCE JUNE 2012
20	WAZIR-N	RAZMAK	DEGAN	FT/64/13/035	09-Aug-13	13	F	19-Aug-13	Y	0	0	0		Y	Y	POLO/TGOS PARALYSIS	#			SPECIMENS NOT RECEIVED IN LAB
21	DIRLOWER	TIMERGARA	SHALGARAM	KP/23/13/030	03-Aug-13	5	F	16-Aug-13	Y	2	1	1	15-Apr-13	N	Y	INI NEURITIS	3450	5	UP	
22	ATTOCK	PINDI GHEB	PINDI GHEB EAST	PB/12/13/020	04-Aug-13	4	M	12-Aug-13	Y	3	2	2	15-Apr-13	N	Y	PSEUDO PARALYSIS	3402	9	UP	
23	MATIARI	MATIARI	TAJPUR	SD/28/13/014	04-Aug-13	8	F	08-Aug-13	Y	3	3	3	03-Jul-13	N	Y	HEMIPLEGIA/CVA	3353	10	UP	

* New L20B+

#Data not available

Y NSC Criteria = Fever, Rapid Progress, Age < 48 months and OPV Doses < 7

UP = Under process

Urgent (Field/NSC) / Inadequate specimens / Age 12-35 months / Zero OPV dose

OPending for genomic sequencing

Page 2 of 2

Summary of Laboratory data for Environmental Surveillance- Pakistan (Jan 2011 to date)

Report for Epidemiological week= 34 (18 Aug – 24 Aug, 2013)

S.No.	Site	Total Samples	2011	2012	Epidemiological Weeks																																																							
					2011													2012													2013																													
Punjab					244	51	30	3																																																				
LAHORE																																																												
1	LHR-Gulshan Kasi Station	32	5	5	[Grid with colored squares]																																																							
2	LHR-Multan Road Station	31	7	6	[Grid with colored squares]																																																							
3	LHR-Outfall Pump Station	32	7	7	[Grid with colored squares]																																																							
MULTAN																																																												
4	Multan-Suraj Mansi, SM-1	32	9	1	[Grid with colored squares]																																																							
5	Multan-Ali Town, AT-1	32	6	2	[Grid with colored squares]																																																							
6	Multan-Karla A. Fateh, KF-1	31	6	1	[Grid with colored squares]																																																							
RAHWALPINDI																																																												
7	RWP-Safdarabad, SA-1	31	11	7	2	[Grid with colored squares]																																																						
FAISALABAD																																																												
8	COMPOSITE SITE, Pump Station	12	0	1	1	[Grid with colored squares]																																																						
9	Small City Road	11	0	0	[Grid with colored squares]																																																							
Sindh					237	46	34	12																																																				
GULSHAN-E-IBRAHIM																																																												
10	KHI-GI-Chakora Nulla	32	6	3	[Grid with colored squares]																																																							
11	KHI-GI-Rashid Minhas Rd	31	8	1	1	[Grid with colored squares]																																																						
GADDAAP																																																												
12	KHI-Gadgaap-Composite site	32	11	6	3	[Grid with colored squares]																																																						
13	KHI-Gadgaap-Sohrab Goth	32	10	10	2	[Grid with colored squares]																																																						
BALDIA																																																												
14	KHI-Baldia-Sajan Goth	31	4	[Grid with colored squares]																																																								
15	KHI-Baldia-Composite	32	7	1	[Grid with colored squares]																																																							
SUKKUR																																																												
16	SUK-Miani P Station-Sukkur city	17	4	[Grid with colored squares]																																																								
17	SUK-Makka P Station-N.Sukkur	16	3	[Grid with colored squares]																																																								
HYDERABAD																																																												
18	HYD-Tulsi Das P. Station	14	6	6	[Grid with colored squares]																																																							
Khyber Pakhtunkhwa					63	19	20	11																																																				
PESHAWAR																																																												
19	PWR-Shahen Town, ST-1	32	11	11	7	[Grid with colored squares]																																																						
20	PWR-Lara Ma, LM-1	31	8	9	4	[Grid with colored squares]																																																						
Balochistan																																																												
21	Quetta-Jarbai KRI, JT-1	30	11	2	[Grid with colored squares]																																																							
22	Quetta-Jama-e-Safia, JS-1	32	9	2	[Grid with colored squares]																																																							
23	Quetta-Surpul, SP-1	12	1	[Grid with colored squares]																																																								
Pakistan					618	136	88	27																																																				

- Wild poliovirus type 1 (WPV1)
- Wild poliovirus type 3 (WPV3)
- ■ Mixture WPV1 & WPV3
- No WPV Isolated
- Under process
- Scheduled sampling, sample not collected
- No sampling scheduled
- Mixture WPV1 & VDPV type 2

SUMMARY
 Total Sites = 23
 Total Samples Collected (2011-2012-2013) = 618
 Total Samples with results available = 603
 Total samples positive for Wild PV (2011-2012-2013) = **251** (136+88+27) (WPV1= 251)
 Samples Positive for VDPV = 1 (Type 2 VDPV from KHI-Gadgaap)

Comparison environmental sampling results 2012-13*

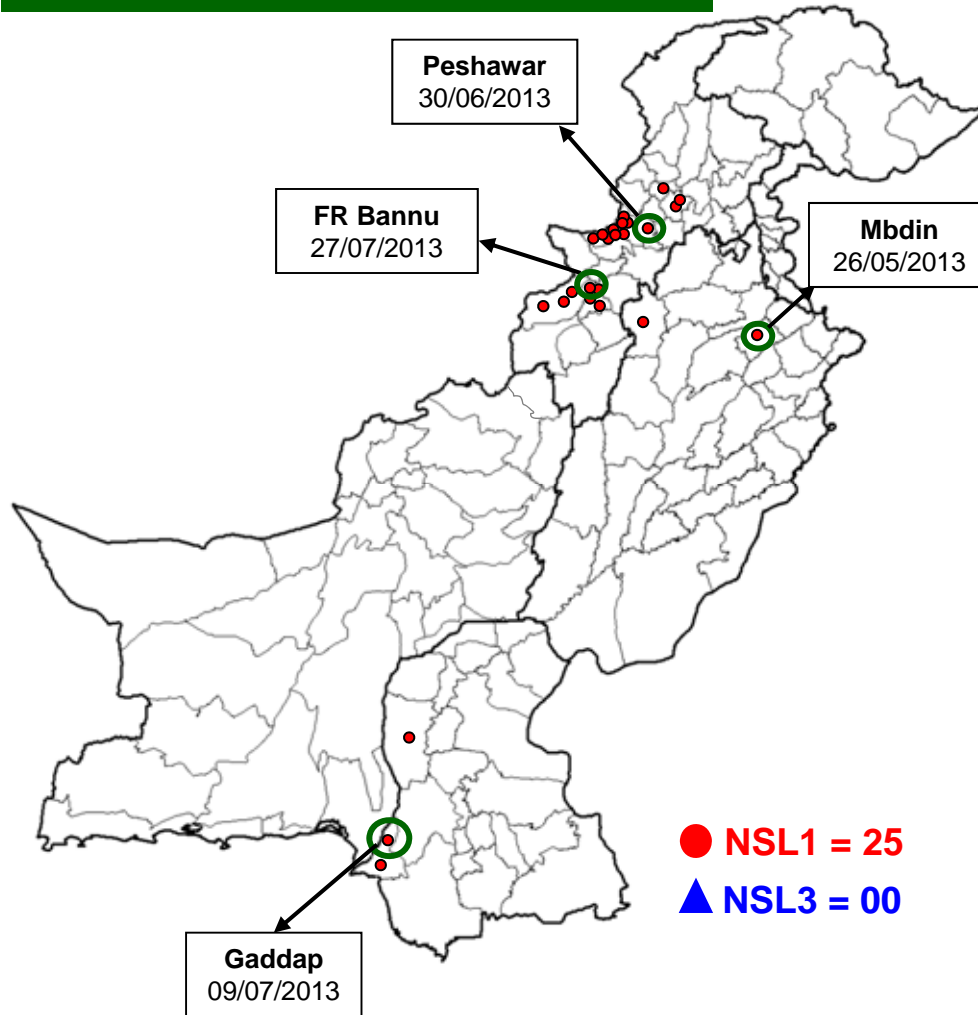
District/ Town	2012			2013*			Last Isolate
	Total	Wild		Total	Wild		
Lahore	21	14	67%	21	0	0%	20-Nov-12
Multan	20	4	20%	21	0	0%	18-Jun-12
Rawalpindi	7	4	57%	7	2	29%	25-Jul-13
Faisalabad	Sampling started week 36			14	1	7%	03-Jan-13
G IQbal	14	2	14%	14	1	7%	22-Jul-13
Gadap	14	8	57%	14	0	0%	08-July-13
Baldia	14	1	7%	14	5	36%	10-Jul-12
Sukkur	7	6	86%	14	0	0%	05-Sep-12
Hyderabad	1	1	100%	7	6	86%	10-Jul-13
Peshawar	14	11	79%	14	11	79%	24-Jul-13
Quetta	14	2	14%	19	1	5%	20-Feb-13
Total	126	53	42%	159	27	17%	25-Jul-13

* Comparison of samples till week 30 of both years with available results

Data source Polio RRL

Map1: Distribution of Wild Polio cases Pakistan 2013*

Districts/ Towns with Wild Polio cases = 12



Province/ Country	Date of Last Case		Number of cases 2013	
	P1	P3	P1	P3
PUNJAB	May, 2013	Jun, 2010	2	-
SINDH	July, 2013	Jan, 2010	3	-
KHYBER- PAKHTUNKHWA	Apr, 2013	Oct, 2010	5	-
FATA	July, 2013	Apr, 2012	15	-
BALUCHISTAN	Oct, 2012	Apr, 2010	-	-
AJK	-	Jun, 2000	-	-
GILGIT-BALTISTAN	Aug, 2012	-	-	-
ISLAMABAD	Sep, 2008	Sep, 2008	-	-
PAKISTAN	July, 2013	Apr, 2012	25	-

○ District with last polio case in province

Cases randomly placed
in districts

— Provincial Boundary
— Districts Boundary

* Afp.rec Data as of 22-08-2013

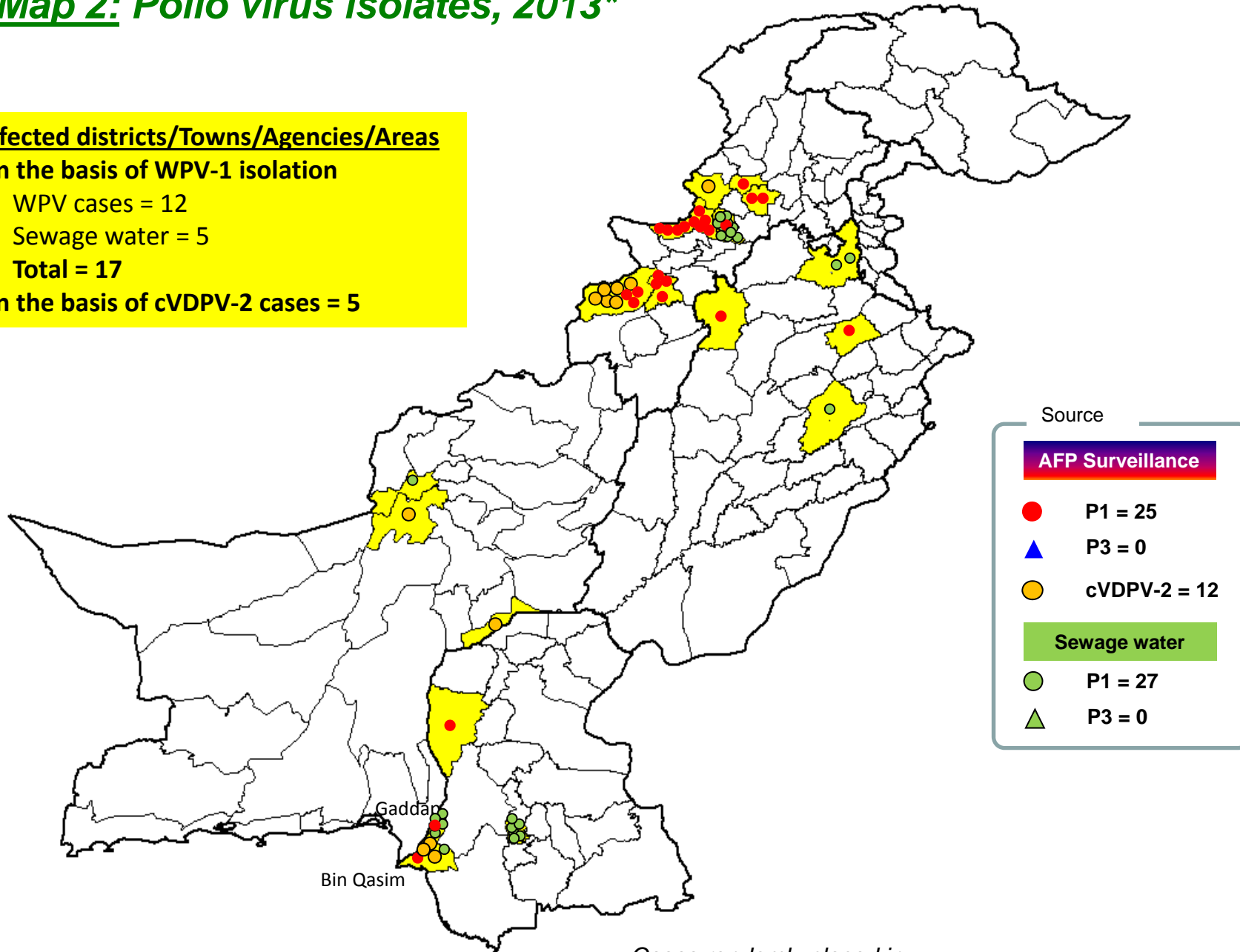
Map 2: Polio virus isolates, 2013*

Infected districts/Towns/Agencies/Areas

On the basis of WPV-1 isolation

- WPV cases = 12
- Sewage water = 5
- Total = 17

On the basis of cVDPV-2 cases = 5



Source

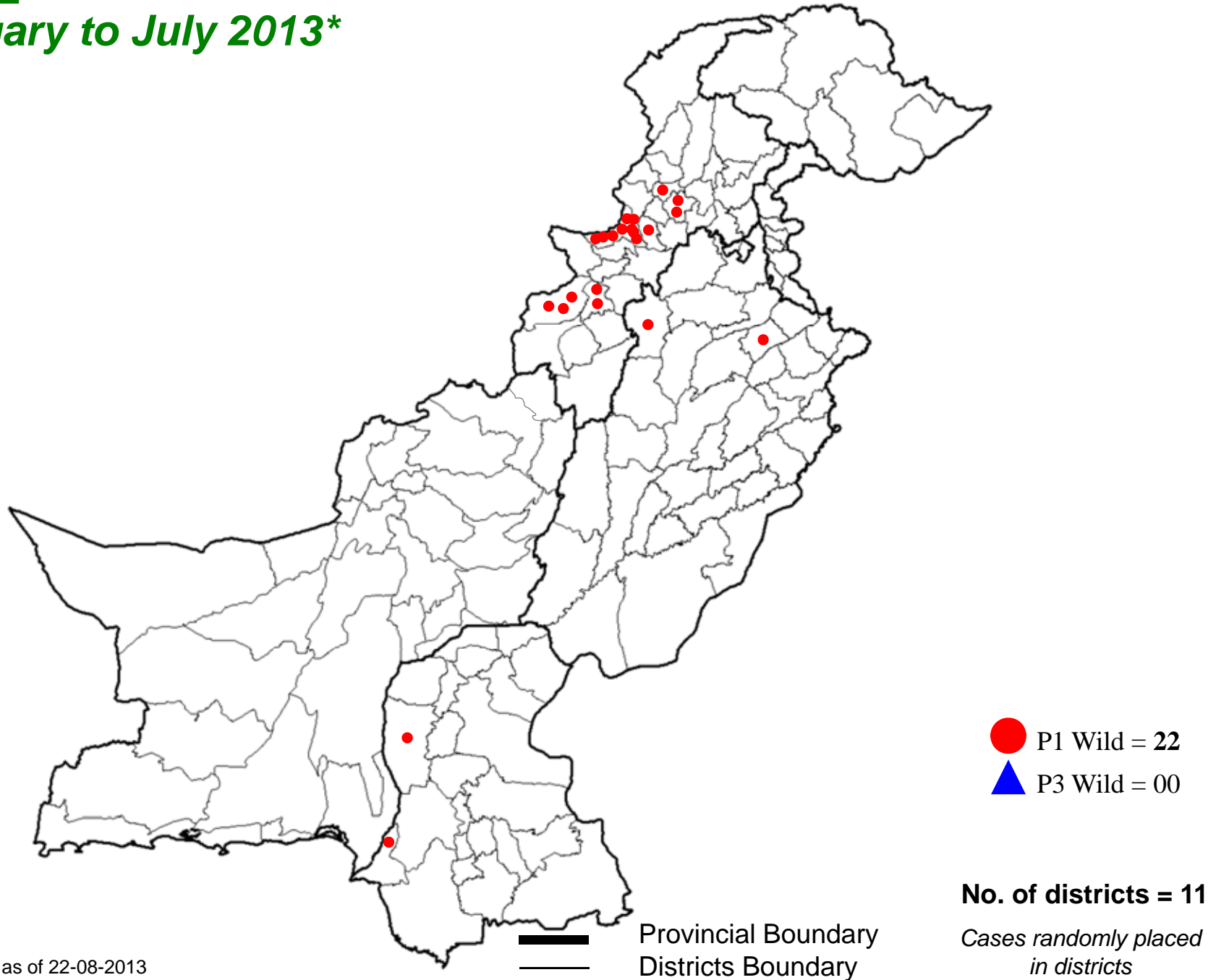
AFP Surveillance	
●	P1 = 25
▲	P3 = 0
●	cVDPV-2 = 12
Sewage water	
●	P1 = 27
▲	P3 = 0

Cases randomly placed in districts

Provincial Boundary
 Districts Boundary

* Afp.rec Data as of 22-08-2013

Map 3: Wild Polio cases in the last 6 months from February to July 2013*



* Afp.rec Data as of 22-08-2013

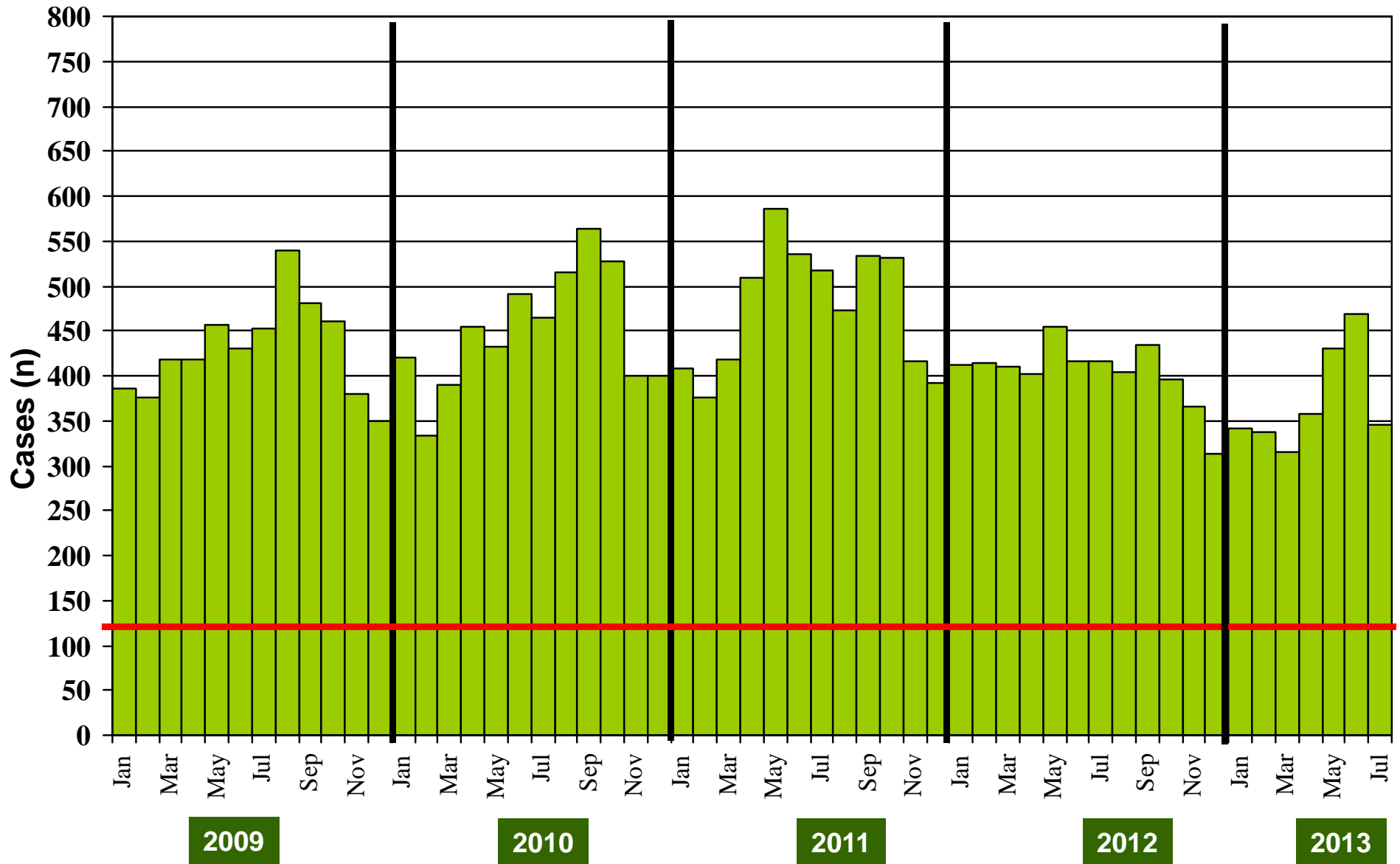
**Table 4: Distribution of AFP Cases By Week of Onset ^
Pakistan 2013* [Week number/Ending on]**

PROVINCE	W 19 11 May 2013	W 20 18 May 2013	W 21 25 May 2013	W 22 01 June 2013	W 23 08 June 2013	W 24 15 June 2013	W 25 22 June 2013	W 26 29 June 2013	W 27 06 July 2013	W 28 13 July 2013	W 29 20 July 2013	W 30 27 July 2013	W 31 03 Aug 2013	W 32 10 Aug 2013	W 33 17 Aug 2013
PUNJAB	46	53	56	45	62	61	47	41	44	47	44	35	51	25	21
SINDH	22	21	21	23	21	13	27	18	20	23	13	17	11	11	5
KP	15	9	12	36	21	21	14	12	17	19	17	20	16	11	10
FATA	7	7	5	2	6	6	1	4	7	7	2	5	2	9	2
BALUCHISTAN	1	7	7	6	7	4	8	5	3	2	5	3	2	2	3
AJK	0	2	0	1	2	1	2	1	2	0	1	2	0	0	1
GILGIT BILTISTAN	0	0	0	0	0	0	0	0	1	0	0	0	0	0	0
ISLAMABAD	2	0	2	0	2	0	0	0	1	0	0	1	0	0	0
PAKISTAN	93	99	103	113	121	106	99	81	95	98	82	83	82	58	42

* Afp.rec & Afplab.rec: Data as of 22-08-2013

^ MMWR Epidemiological Weeks

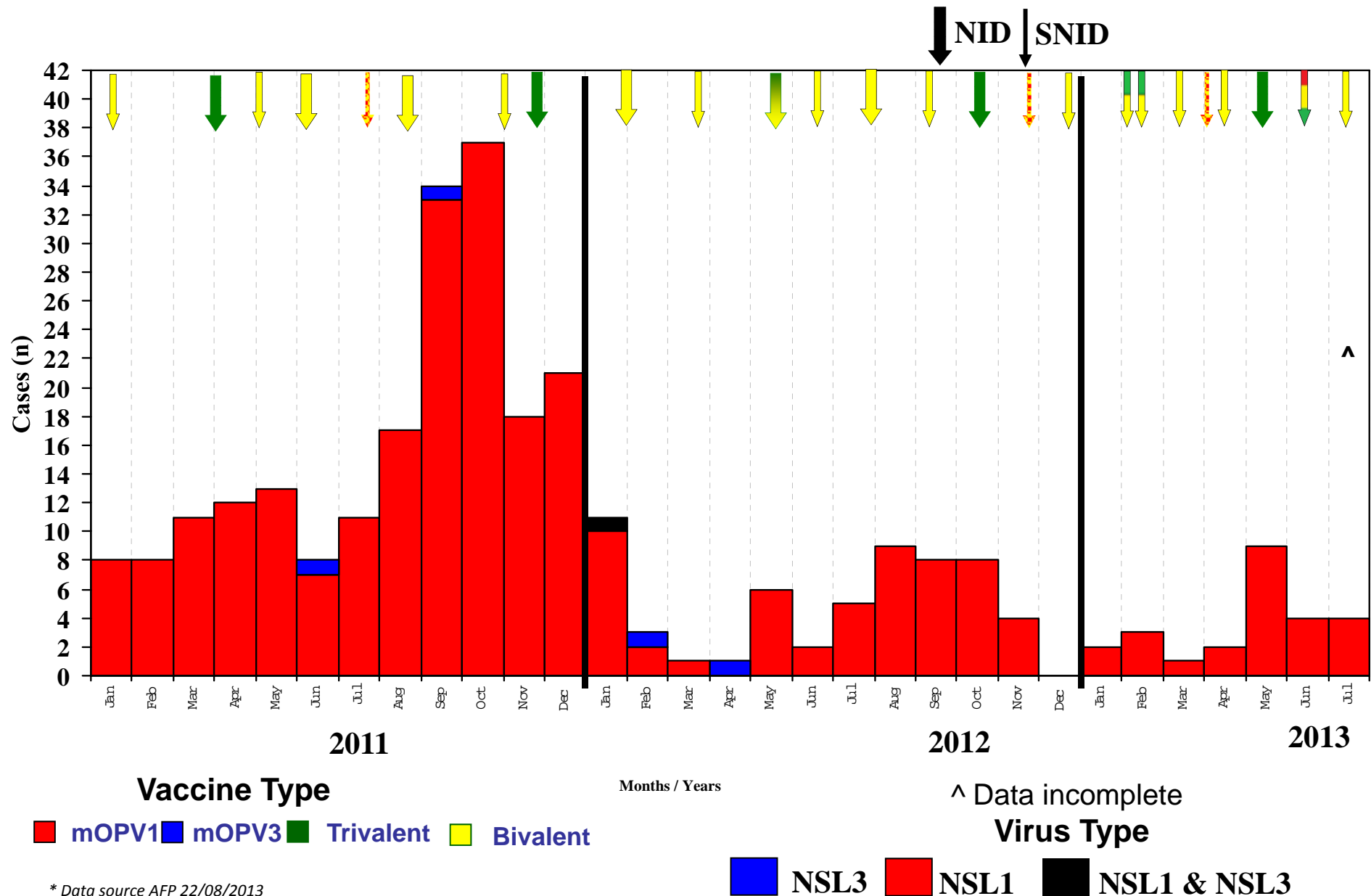
Graph 1: Distribution of AFP Cases by Month, Pakistan 2009-2013*



@ Non-polio AFP rate of 2/100,000 children < 15 years

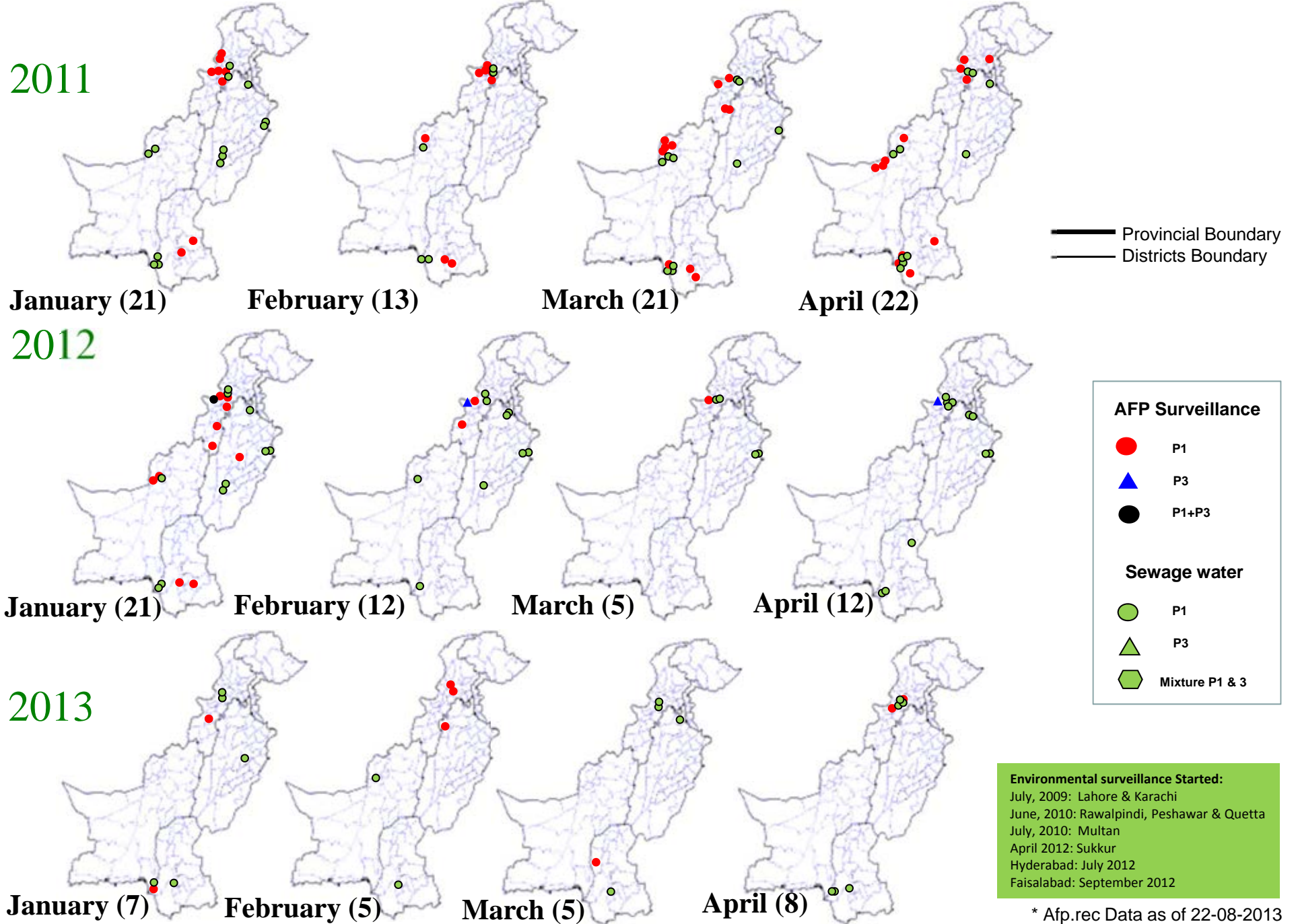
*Afp.rec Data as of 22-08-2013

Confirmed Polio Cases By Poliovirus Type, 2011-2013*



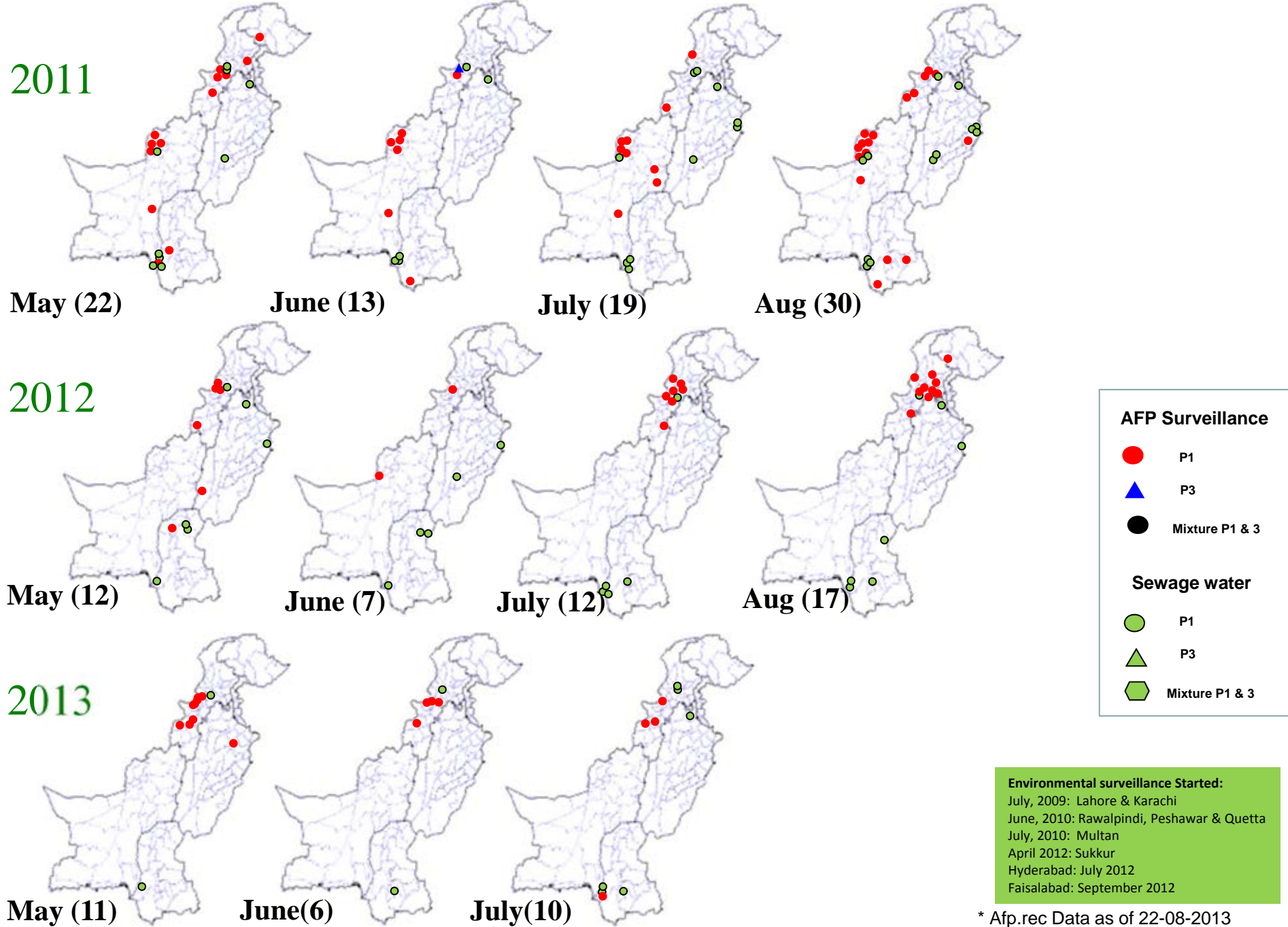
* Data source AFP 22/08/2013

Map 4: Monthly Comparison of P1 & P3 Polio Cases/Isolates 2011-2013*



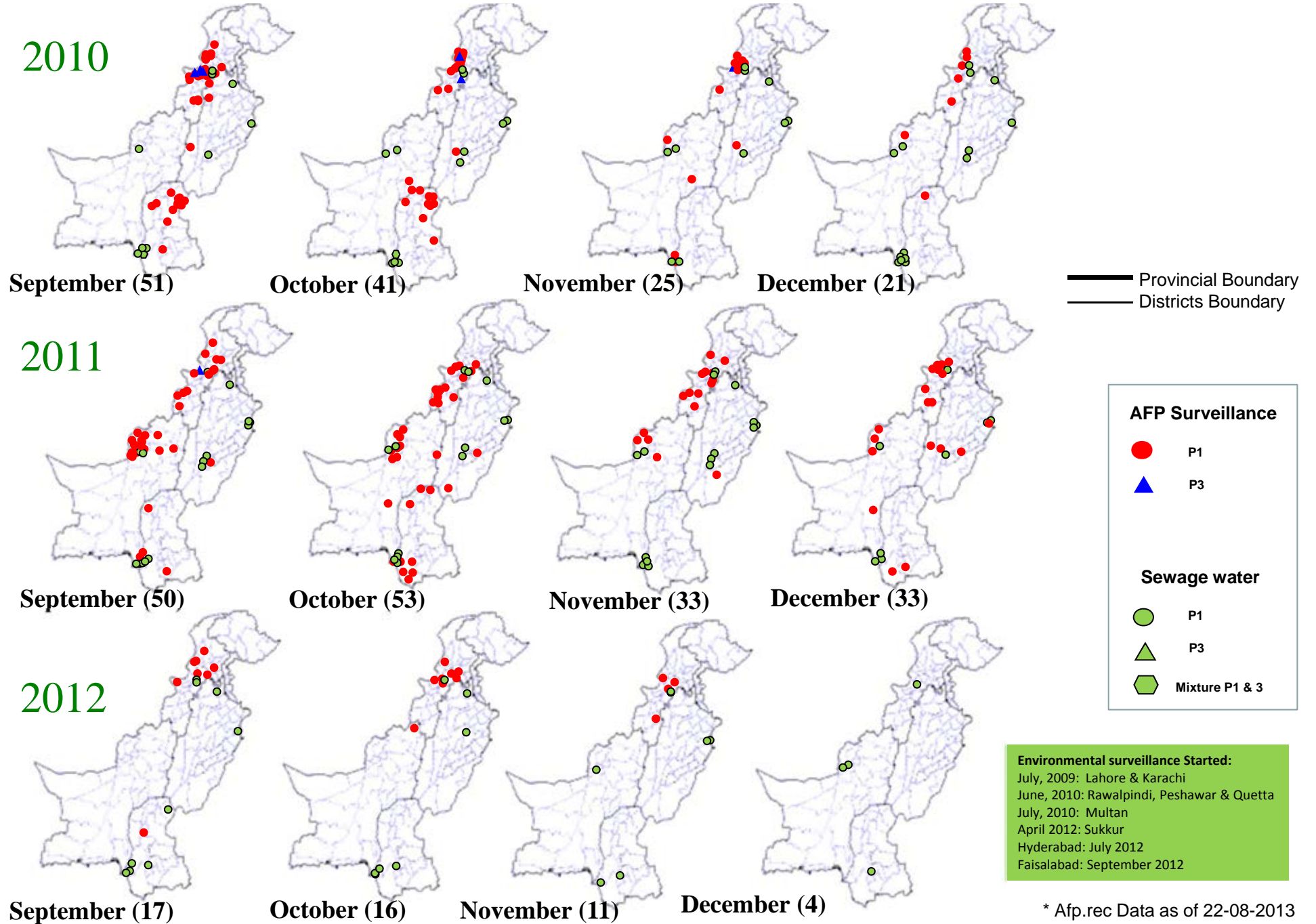
* Afp.rec Data as of 22-08-2013

Map 4.1: Monthly Comparison of P1 & P3 Polio Cases/Isolates 2011-2013*



* Afp.rec Data as of 22-08-2013

Map 4.2: Monthly Comparison of P1 & P3 Polio Cases/Isolates 2010-2012*

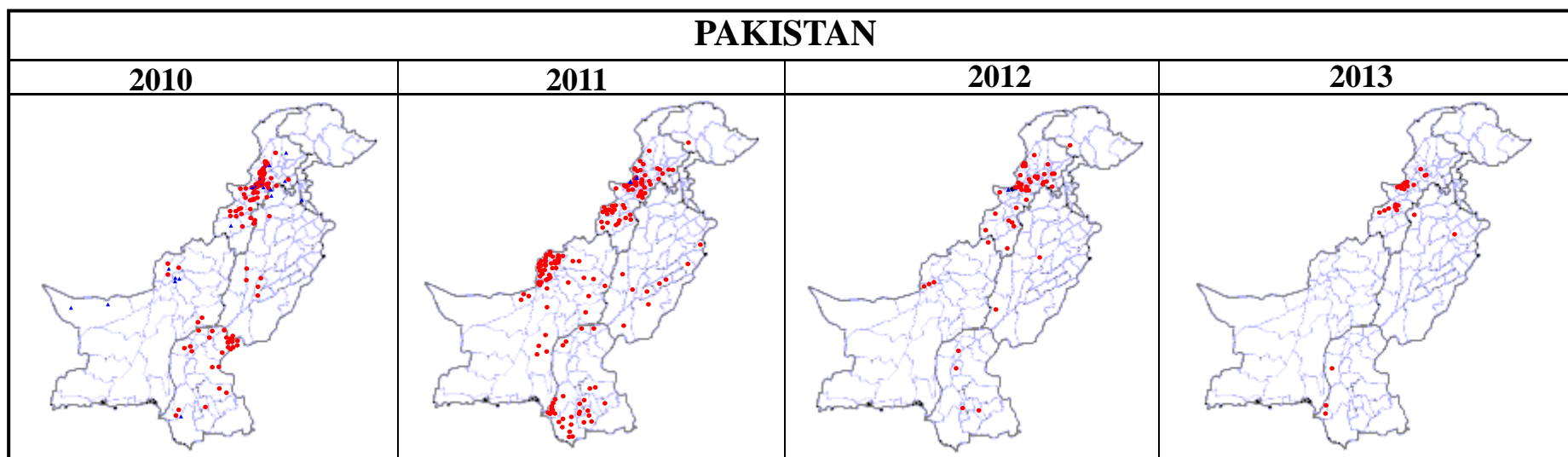


* Afp.rec Data as of 22-08-2013

Table 5: Polio Eradication Update, Pakistan 2010-2013*

Province/Region	Polio 1				Polio 3				Total Wild			
	2010	2011	2012	2013	2010	2011	2012	2013	2010	2011	2012	2013
PUNJAB	6	9	2	2	1	0	-	-	7	9	2	2
SINDH	26	33	4	3	1	0	-	-	27	33	4	3
KP	19	23	27	5	5	0	-	-	24	23	27	5
FATA^	63	57	17	15	11	2	2	-	74	59	20^	15
BALUCHISTAN	6	73	4	-	6	0	-	-	12	73	4	-
AJK	0	0	-	-	0	0	-	-	0	0	-	-
Gilgit-Baltistan	0	1	1	-	0	0	-	-	0	1	1	-
ISLAMABAD	0	0	-	-	0	0	-	-	0	0	-	-
PAKISTAN	120	196	55	25	24	2	2	-	144	198	58	25

^ FATA reported mixture of NSL1 & NSL3



* Afp.rec Data as of 22-08-2013

Table 6: Vaccination status of non polio AFP cases age 6-59 months 2010-2013*

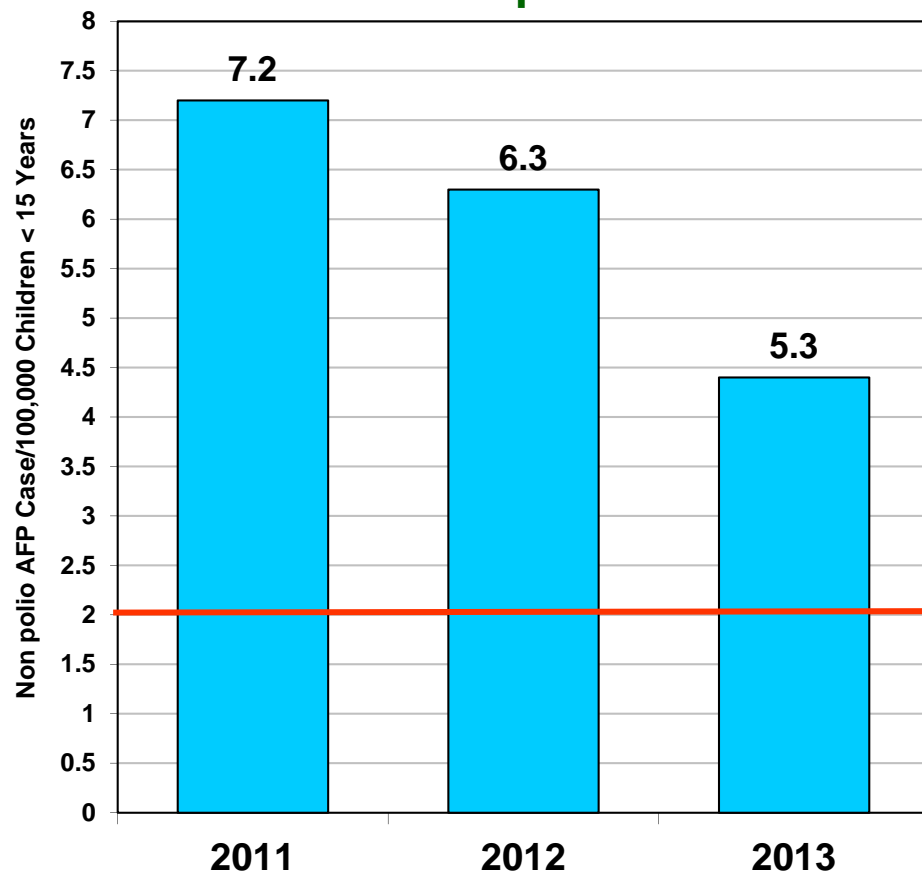
REGION	0 dose				1-2 doses				3 doses				4-6 doses				7+ doses			
	10	11	12	13	10	11	12	13	10	11	12	13	10	11	12	13	10	11	12	13
Central Punjab	0%	0%	0%	0%	1%	1%	0%	0%	1%	2%	0%	1%	7%	6%	4%	9%	91%	92%	95%	89%
North Punjab	0%	0%	0%	0%	0%	1%	0%	0%	2%	1%	0%	0%	6%	5%	4%	4%	91%	93%	96%	96%
South Punjab	0%	0%	0%	0%	1%	0%	0%	0%	0%	1%	0%	0%	5%	5%	4%	5%	94%	93%	96%	94%
PUNJAB	0%	0%	0%	0%	1%	1%	0%	0%	1%	1%	0%	0%	6%	5%	4%	7%	92%	93%	96%	92%
Karachi	2%	4%	1%	0%	0%	1%	1%	4%	3%	0%	2%	0%	7%	6%	6%	6%	88%	88%	90%	91%
North Sindh	0%	0%	0%	0%	1%	1%	0%	0%	0%	0%	1%	0%	4%	5%	4%	5%	95%	94%	94%	95%
South Sindh	0%	1%	0%	0%	1%	1%	1%	1%	1%	0%	2%	1%	9%	6%	4%	9%	89%	93%	93%	89%
SINDH	1%	1%	0%	0%	1%	1%	1%	1%	1%	0%	1%	0%	7%	6%	4%	7%	91%	92%	93%	92%
Central Khyber Pakhtunkhwa	1%	1%	2%	1%	0%	1%	1%	1%	1%	0%	0%	1%	2%	3%	2%	1%	97%	95%	95%	97%
North Khyber Pakhtunkhwa	2%	1%	2%	0%	1%	2%	2%	1%	2%	1%	2%	1%	6%	7%	9%	6%	89%	90%	85%	92%
South Khyber Pakhtunkhwa	3%	2%	2%	0%	3%	4%	1%	0%	3%	4%	1%	0%	14%	7%	9%	3%	76%	83%	87%	97%
Khyber Pakhtunkhwa	1%	1%	2%	1%	1%	2%	1%	1%	2%	1%	1%	1%	6%	5%	6%	3%	90%	91%	89%	95%
FATA	14%	14%	18%	33%	11%	10%	6%	4%	6%	5%	3%	9%	18%	11%	12%	5%	51%	61%	62%	47%
North Balochistan	12%	4%	12%	16%	0%	12%	10%	13%	4%	23%	3%	0%	12%	12%	17%	16%	72%	50%	57%	55%
Quetta Block	0%	31%	14%	11%	11%	10%	10%	11%	0%	3%	0%	0%	9%	14%	14%	11%	81%	43%	62%	67%
Rest of Balochistan	6%	7%	9%	4%	2%	2%	6%	4%	2%	5%	5%	3%	11%	10%	10%	22%	78%	76%	70%	65%
BALUCHISTAN	5%	16%	8%	10%	4%	6%	8%	8%	2%	6%	3%	3%	11%	12%	17%	15%	78%	60%	64%	64%
PAKISTAN	1%	2%	1%	2%	1%	1%	1%	1%	1%	1%	1%	1%	7%	6%	5%	7%	89%	89%	92%	90%

* Afp.rec Data as of 22-08-2013

Key Surveillance Indicators; 2011-2013*

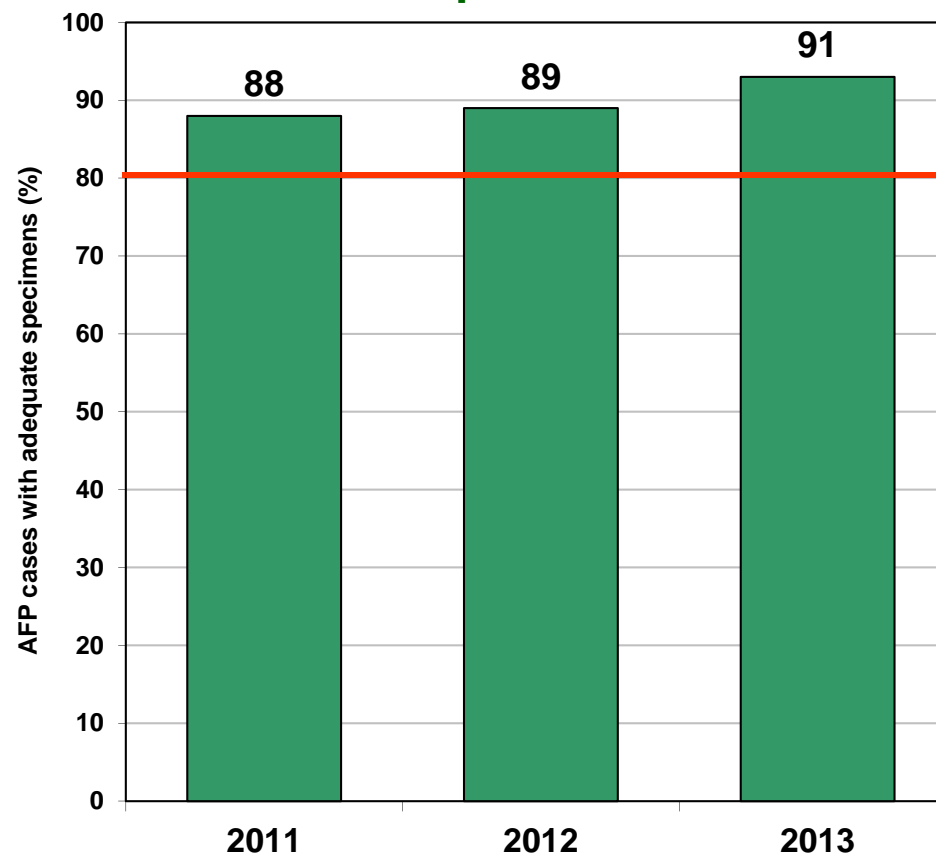
(Non polio AFP rate and % AFP cases with adequate specimens)

Graph 3



■ Non Polio AFP Rate

Graph 4



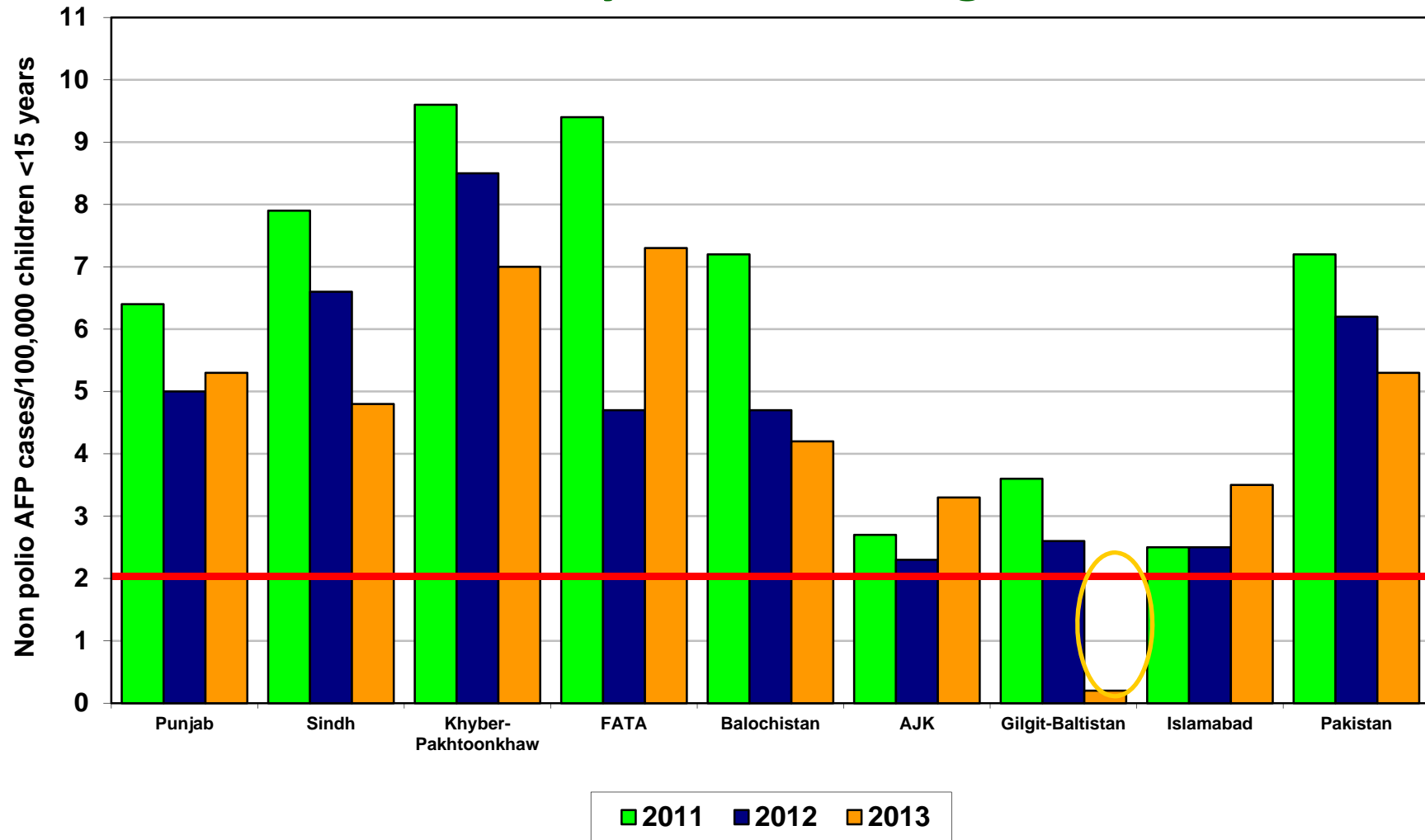
■ % AFP with Adequate Specimens

— Target

Non Polio AFP rate Up to Week No. 33 ended on 17th August, 2013

* Afp.rec Data as of 22-08-2013

Non Polio AFP Rate By Province/Regions, 2011-2013*

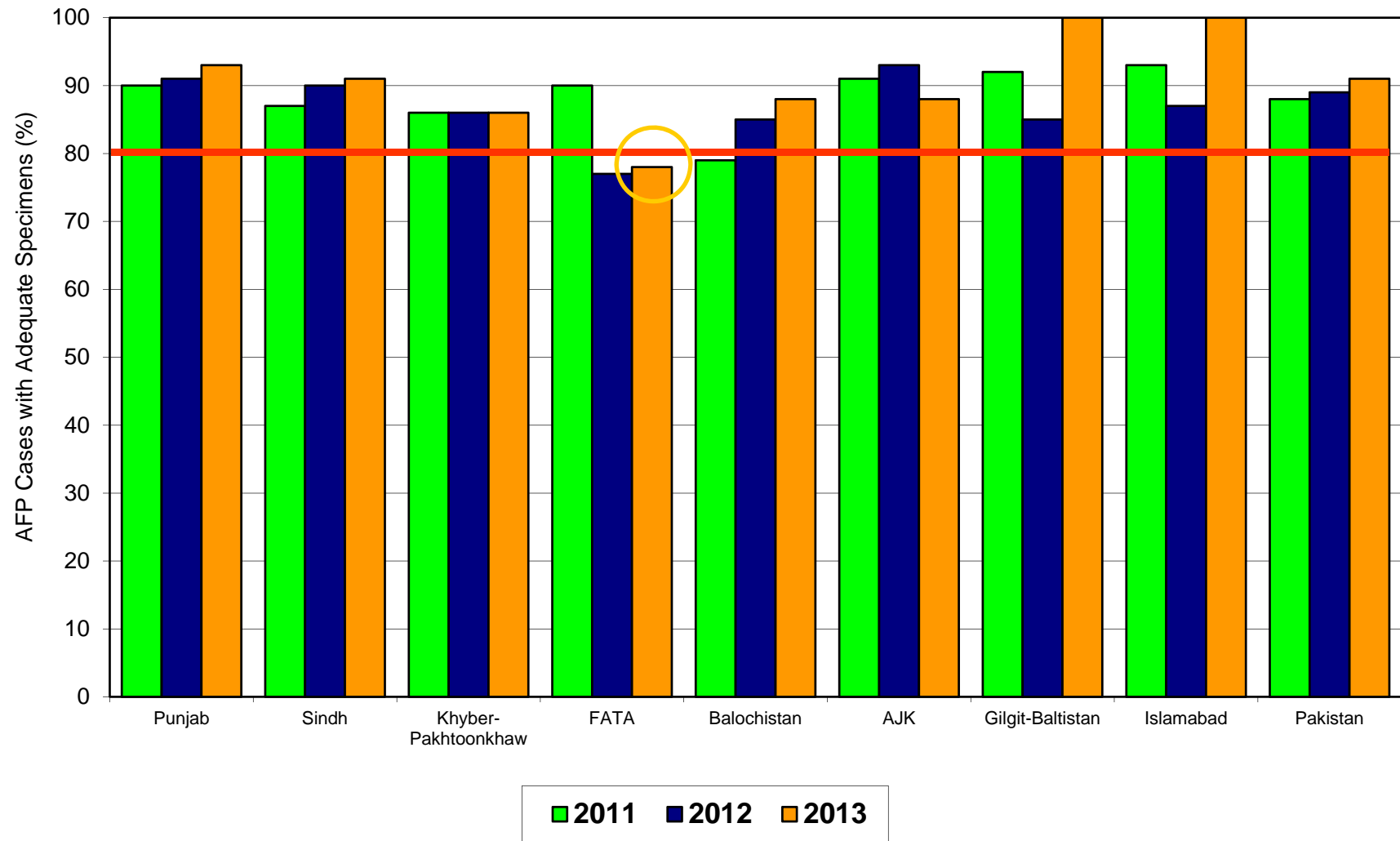


Non Polio AFP rate Up to Week No. 33 ended on 17th August, 2013

Target Non-Polio AFP Rate 2/ 100000 < 15 years of the age

* Data source AFP 22/08/2013

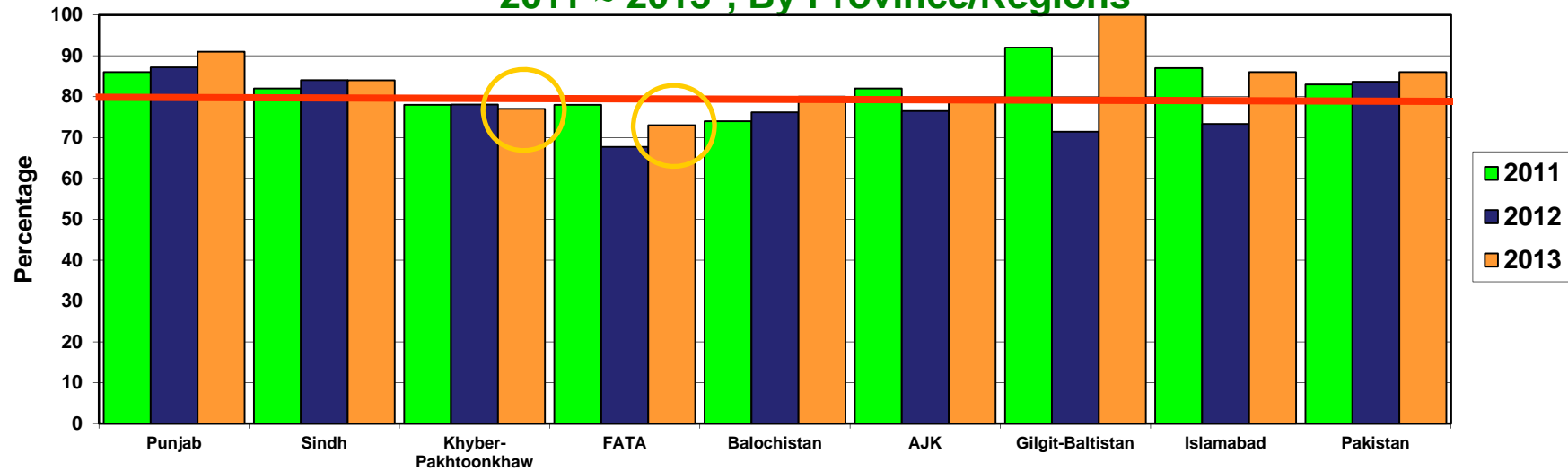
Percent AFP Cases with Adequate Specimens By Province/Regions, 2011-2013*



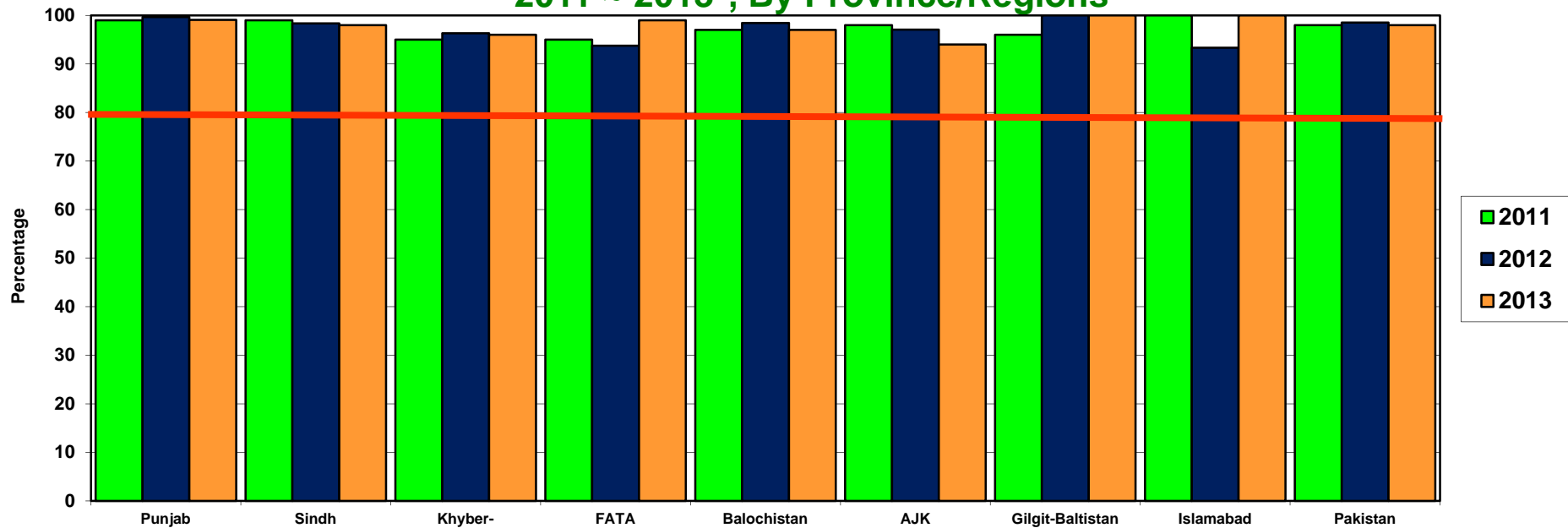
* Data source AFP 22/08/2013

Target Adequate Sample cases = 80%

**Graph 5: Percent AFP Cases Notified within 07 days of paralysis onset
2011 ~ 2013*, By Province/Regions**



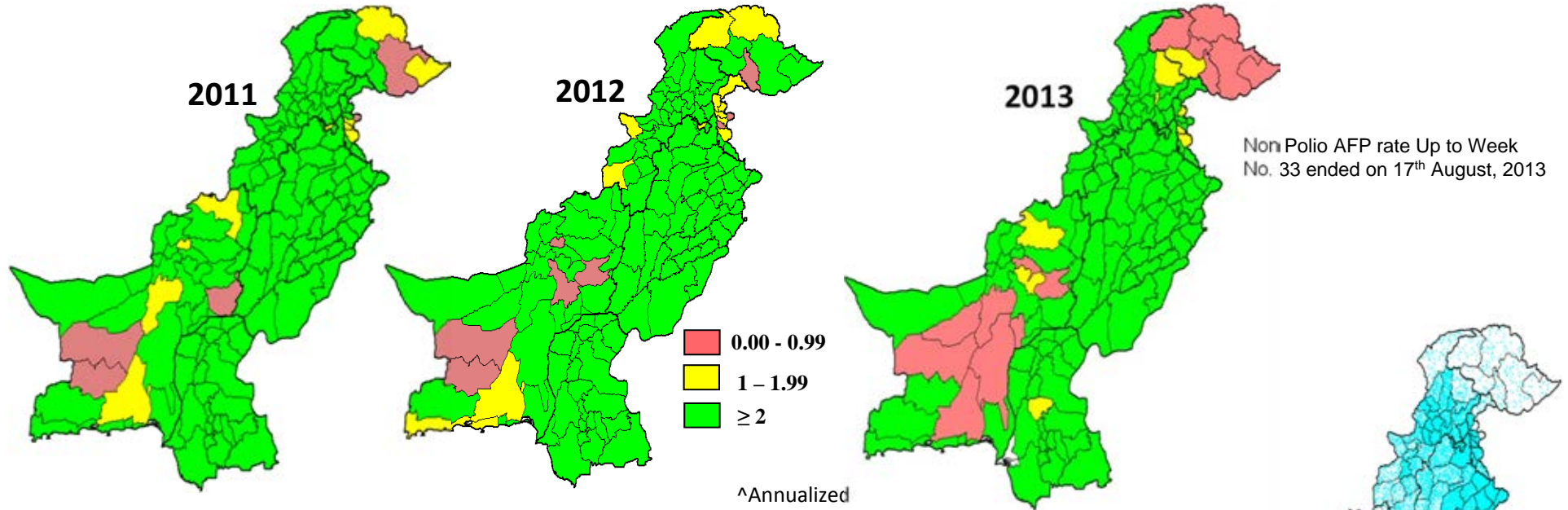
**Graph 6: Percent AFP Cases Investigated within 48 hours of notification
2011 ~ 2013*, By Province/Regions**



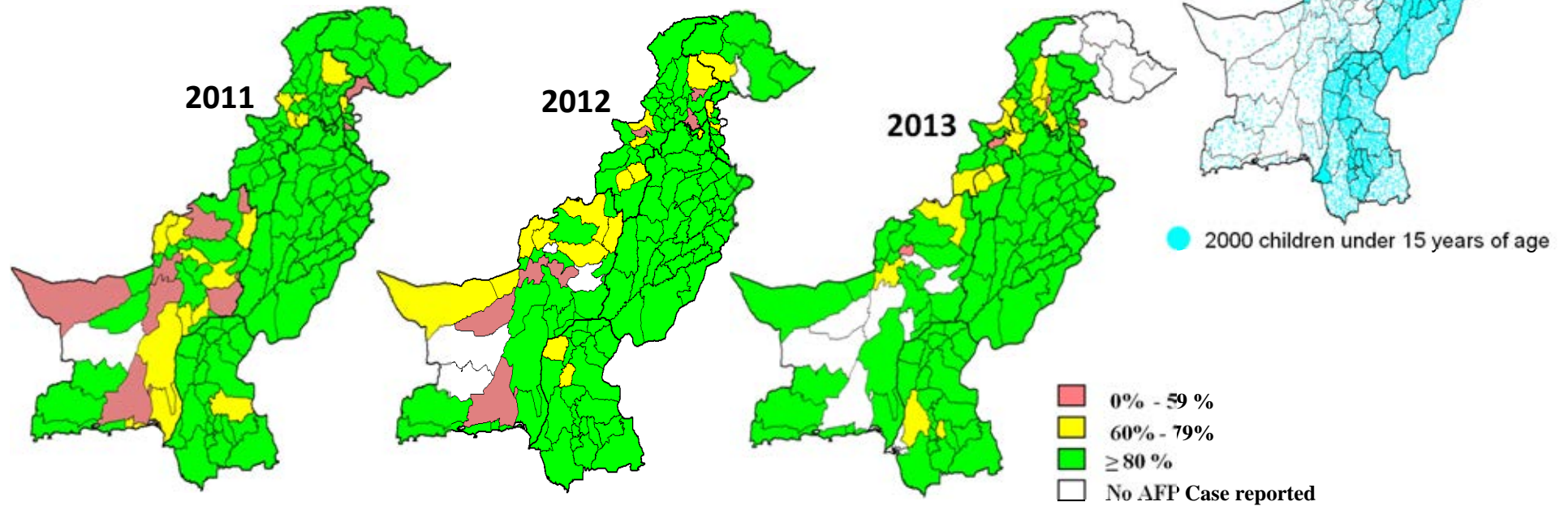
* Afp.rec Data as of 22-08-2013

— Target

Non-Polio[^] AFP Rate by District



Percent AFP Cases with Adequate Specimens, by District



* Data source AFP 22/08/2013

Table 7: AFP CASES PENDING FOR CLASSIFICATION WITH DATE OF ONSET MORE THAN 90 DAYS* 2013 (1/2)

S. No	DISTRICT	TEHSIL	EPID	SEX	AGE	DONSET	DOSESE	DSTOOL1	DSTOOL2	LAB	FEVER	ASVM	PROG	FUP	PEND (DAYS)
1	KARAK	KARAK	KP/51/13/005	F	13	01-01-13	7+	15-02-13	17-02-13	EV	N	Y	Y	Y	233
2	KHYBER	LANDI KOTAL	FT/34/13/003	M	84	10-02-13	7+	25-02-13	27-02-13	NVI	Y	N	Y		193
3	KHYBER	JAMRUD	FT/34/13/004	F	16	22-01-13	7+	05-03-13	06-03-13	EV	Y	Y	Y		212
4	MARDAN	MARDAN	KP/40/13/007	M	29	17-01-13	7+	06-02-13	07-02-13	EV	Y	Y	Y	Y	217
5	PESHAWAR	PESHAWAR	KP/30/13/008	M	96	15-01-13	7+	26-02-13	27-02-13	NVI	N	N	Y	Y	219
6	SWAT	SWAT	KP/24/13/004	M	120	20-02-13	7+	Child Died Before Stool Collection			Y	N	Y	DIED	183
7	WAZIR-N	MIRAN SHAH	FT/64/13/001	M	96	08-02-13	6	13-02-13		NVI	Y	N	Y	DIED	195
8	FAISALABAD	JARANWALA	PB/51/13/045	F	10	01-03-13	1	Late Notified			N	Y	Y	Y	174
9	FAISALABAD	TANDLIAN WALA	PB/51/13/049	F	18	22-05-13	7+	27-06-13	28-06-13	NVI	Y	Y	UK	Y	92
10	LODHRAN	LODHRAN	PB/64/13/035	M	84	22-05-13	7+	14-07-13	15-07-13	NVI	N	N	Y	Y	92
11	MULTAN	JALALPUR PIRWALA	PB/61/13/046	M	76	18-05-13	7+	17-06-13	19-06-13	NVI	Y	Y	Y	Y	96
12	MUZFARGARH	ALIPUR	PB/83/13/054	M	30	25-04-13	7+	Late Notified			Y	Y	Y	Y	119
13	RAWALPINDI	RAWALPINDI	PB/11/13/028	M	132	13-05-13	7+	03-06-13	05-06-13	NVI	N	N	Y	Y	101
14	SHEIKUPURA	FEROZEWALA	PB/33/13/030	M	144	22-05-13	7+	14-06-13	15-06-13	NVI	N	Y	Y	Y	92
15	HYDERABAD	HYDERABAD RURAL	SD/21/13/006	M	84	01-04-13	7+	Child Died Before Stool Collection			Y	N	Y	DIED	143
16	JACOBABAD	THUL	SD/53/13/013	M	156	16-05-13	7+	11-06-13	15-06-13	NVI	Y	Y	Y	Y	98
17	JAMSHORO	T.B.KHAN	SD/25/13/009	F	18	03-05-13	7+	25-05-13	12-06-13	NVI	N	N	Y	Y	111
18	KAMBAR	WARAH	SD/55/13/006	M	96	01-01-13	7+	Late Notified			N	Y	Y	Y	233
19	KAMBAR	SUJAWAL	SD/55/13/019	F	3	22-05-13	1	09-07-13	10-07-13	EV	Y	Y	Y		92
20	KHIJAMSHEED	JAMSHEED	SD/66/13/004	F	60	01-05-13	7+	Child Died Before Stool Collection			Y	N	Y	DIED	113
21	KHISADDAR	SADDAR	SD/77/13/004	F	38	05-04-13	7+	10-05-13	11-05-13	NVI	N	N	Y	Y	139
22	NFEROZ	BHIRIA	SD/45/13/003	F	144	05-02-13	7+	Child Died Before Stool Collection			Y	Y	Y	DIED	198
23	NFEROZ	MORO	SD/45/13/013	F	54	10-05-13	7+	01-06-13	02-06-13	NVI	N	Y	Y	Y	104
24	SANGHAR	KHIPRO	SD/32/13/005	M	144	05-03-13	7+	Late Notified			N	N	Y	Y	170
25	THATTA	SUJAWAL	SD/22/13/027	M	48	20-05-13	7+	23-06-13	25-06-13	NVI	Y	N	Y		94
26	BANNU	BANNU	KP/61/13/010	M	53	30-04-13	7+	Late Notified			Y	N	N	Y	114
27	BUNIR	DAGGAR	KP/22/13/008	M	35	12-03-13	7+	01-04-13	02-04-13	NVI	Y	Y	Y	Y	163
28	BUNIR	DAGGAR	KP/22/13/007	M	132	28-02-13	7+	30-03-13	31-03-13	NVI	N	N	Y	Y	175
29	BUNIR	DAGGAR	KP/22/13/015	M	72	01-01-13	7+	Late Notified			Y	Y	Y	Y	233
30	DIKHAN	KULACHI	KP/60/13/013	F	18	22-04-13	5	16-06-13	17-06-13	VACC	N	Y	Y	Y	122
31	DIRLOWER	SAMAR BAGH	KP/23/13/015	F	13	30-01-13	7+	Late Notified			Y	Y	Y	Y	204
32	HARIPUR	HARIPUR	KP/12/13/005	M	66	18-01-13	7+	19-02-13	20-02-13	EV	N	N	Y	Y	216
33	HARIPUR	HARIPUR	KP/12/13/012	F	20	18-04-13	7+	19-05-13	20-05-13	EV	Y	Y	Y	Y	126
34	LAKKIMRWT	LAKKIMRWT	KP/62/13/018	M	26	22-05-13	7+	21-06-13	22-06-13		N	Y	Y	Y	92
35	MANSEHRA	MANSEHRA	KP/14/13/005	M	168	17-03-13	7+	Child Died Before Stool Collection			N	N	Y	DIED	158
36	MARDAN	TAKHT BHAI	KP/40/13/034	M	5	10-03-13	6	Late Notified			N	Y	UK	Y	165
37	NOWSHERA	NOWSHERA	KP/32/13/012	F	108	15-03-13	7+	Child Died Before Stool Collection			Y	N	Y	DIED	160
38	PESHAWAR	PESHAWAR	KP/30/13/022	F	22	06-02-13	7+	Late Notified			N	N	N	Y	197
39	PESHAWAR	PESHAWAR	KP/30/13/026	M	24	17-04-13	0	17-05-13	19-05-13	EV	Y	Y	Y	Y	127
40	PESHAWAR	PESHAWAR	KP/30/13/039	F	54	03-05-13	7+	14-06-13	15-06-13	EV	Y	Y	Y	Y	111
41	SHANGLA	MARTOONG	KP/26/13/001	M	72	08-01-13	7+	Late Notified			Y	Y	Y	LOST	226
42	SWAT	SWAT	KP/24/13/006	F	132	02-04-13	7+	10-04-13		NVI	N	N	Y	DIED	142

€ Based on recall of parents

* Afp.rec Data as of 22-08-2013

60 days Follow-up not done

FUP = Residual Weakness at 60 days follow up.

Table 7.1: AFP CASES PENDING FOR CLASSIFICATION WITH DATE OF ONSET MORE THAN 90 DAYS* 2013 (2/2)

S. No	DISTRICT	TEHSIL	EPID	SEX	AGE	DONSET	DOSES€	DSTOOL1	DSTOOL2	LAB	FEVER	ASYM	PROG	FUP	PEND (DAYS)
43	SWAT	SWAT	KP/24/13/009	M	16	19-04-13	7+	14-05-13	15-05-13	NVI	Y	N	N	Y	125
44	SWAT	SWAT	KP/24/13/012	F	120	30-03-13	7+	27-05-13	28-05-13	NVI	N	N	Y		145
45	TANK	TANK	KP/63/13/005	M	42	25-02-13	7+	27-04-13	28-04-13	NVI	Y	N	UK	Y	178
46	TORGHAR	TORGHAR	KP/15/13/001	M	48	23-04-13	7+	13-05-13	15-05-13	NVI	N	Y	Y		121
47	QUETTA	QUETTA CITY	BN/11/13/006	F	9	12-04-13	7+	27-05-13	28-05-13	NVI	N	Y	Y	Y	132
48	ZHOB	ZHOB	BN/21/13/002	F	84	05-05-13	7+	30-05-13	31-05-13	NVI	Y	Y	Y	Y	109
49	BAGH	BAGH	AJ/50/13/001	M	80	23-01-13	7+	17-02-13	18-02-13	NVI	N	N	Y	Y	211
50	BAJOUR	MAMUND	FT/33/13/007	M	45	02-01-13	7+	Late Notified			N	Y	Y	Y	232
51	KHYBER	LANDI KOTAL	FT/34/13/005	M	132	09-03-13	7+	12-03-13		EV	N	N	Y		166
52	KHYBER	JAMRUD	FT/34/13/002	F	24	18-01-13	7+	21-02-13	23-02-13	NVI	N	Y	Y		216
53	MOHMAND	PINDIALI	FT/35/13/006	F	17	05-05-13	7+	17-06-13	18-06-13	NVI	Y	Y	Y		109
54	MOHMAND	UPPER MOHMAND	FT/35/13/003	F	18	18-04-13	7+	07-05-13	08-05-13	NVI	Y	Y	Y		126
55	MOHMAND	PINDIALI	FT/35/13/002	M	24	13-03-13	7+	28-03-13	29-03-13	VACC	UK	Y	Y		162
56	WAZIR-N	MIRAN SHAH	FT/64/13/007	M	48	25-04-13	5	10-05-13	12-05-13	NVI	Y	N	Y	Y	119

€ Based on recall of parents

* Afp.rec Data as of 22-08-2013

60 days Follow-up not done

FUP = Residual Weakness at 60 days follow up.