



**World Health  
Organization**

# **Weekly AFP Surveillance Update Pakistan**

**Week 33** (*Ended on 17<sup>th</sup> August, 2013*)

AFP Surveillance



## ***National Surveillance Cell Federal EPI***

World Health Organization Country Office,  
Chak Shahzad, Park Road,  
Islamabad, Pakistan

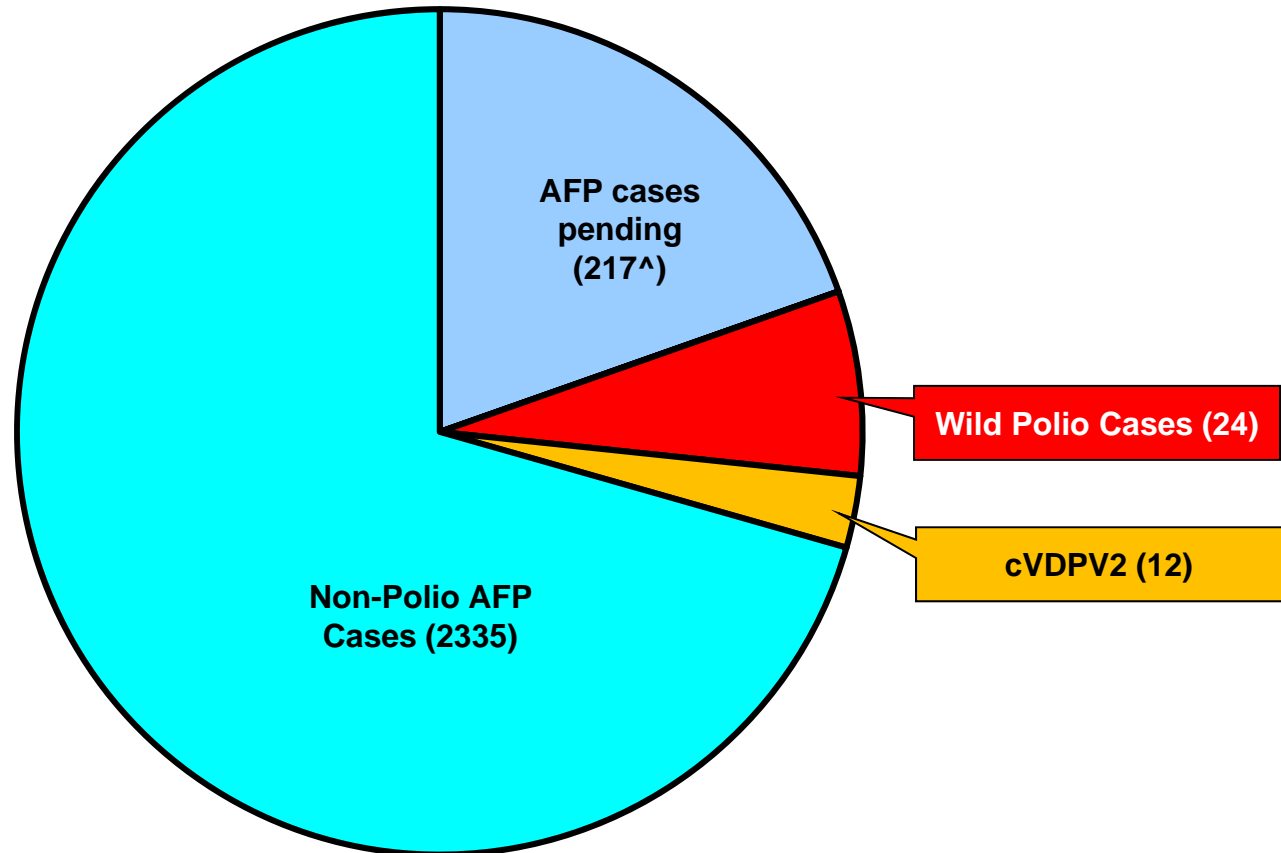
Tel: +92-51 9255123 / 9255282 /9255184

Fax: +92-51 9255274

Email: [epidata@pak.emro.who.int](mailto:epidata@pak.emro.who.int)

Web site: [www.who.gov.pk](http://www.who.gov.pk)

# AFP Case Profile, 2013\*



**Total AFP Cases Reported = 2588**

<sup>^</sup>51 Inadequate cases pending classification by ERC;  
<sup>^</sup>71 Inadequate cases not due for FUP  
<sup>^</sup>95 Pending in the Lab

# Comparison of polio cases by province/region 2012<sup>§</sup> & 2013\*

Region/ Province	No. of polio cases		No. of infected districts/towns		Last polio case
	2012	2013	2012	2013	
<b>Khyber Pakhtunkhwa</b>	10	5	8	4	30-June-13
<b>FATA / FR Areas</b>	13	14	4	3	13-July-13
<b>Sindh</b>	3	3	3	3	09-July-13
<b>Balochistan</b>	3	-	1	-	02-Oct-12
<b>Punjab</b>	2	2	2	2	26-May-13
<b>Gilgit-Baltistan</b>	1	-	1	-	06-Aug-12
<b>Pakistan</b>	<b>32</b>	<b>24</b>	<b>19</b>	<b>12</b>	<b>13-July-13</b>

Four additional districts/town declared infected based on environmental samples 2013

Total polio cases of 2012 are 58

\* Afp.rec Data as of 15-08-2013

§Based on date of onset

***Table 1: List of Confirmed Polio Cases, Pakistan 2013\* (1/2)***

S.NO.	PROVINCE/ REGION	DISTRICT	TEHSIL	EPID NO.	SEX	AGE (m)	DATE OF ONSET OF PARALYSIS	NO. OPV DOSES (based on parents recall)		FEVER	Asymetric Paralysis	Rapid Progression	REFUSAL	W/PV TYPE	GENETICS
								Route	SIA's						Cluster
1	SINDH	BIN QASIM	BIN QASIM	SD/62/13/001	M	24	14-Jan-13	0	0	N	Y	Y	Y	NSL1	R4
2	KP	BANNU	BANNU	NW/61/13/002	M	13	26-Jan-13	0	0	Y	N	Y	Y	NSL1	R4
3	KP	MALAKAND	DARGAI	NW/20/13/006	F	3	08-Feb-13	2	2	Y	N	Y	N	NSL1	R4
4	KP	MARDAN	MARDAN	NW/40/13/009	M	30	12-Feb-13	3	7+	Y	N	Y	N	NSL1	R4
5	PUNJAB	MIWANWALI	ISAKHEL	PB/43/13/005	F	36	07-Feb-13	3	7+	Y	N	Y	N	NSL1	R4
6	SINDH	DADU	MEHAR	SD/24/13/006	F	15	22-Mar-13	0	2	Y	N	Y	N	NSL1	R2
7	KP	MARDAN	MARDAN	NW/40/13/026	M	8	22-Apr-13	0	0	Y	Y	Y	Y	NSL1	R4
8	FATA	KHYBER\$	BARA	FT/34/13/008	M	10	24-Apr-13	2	4	Y	Y	N	N	NSL1	R4
9	FATA	FR BANNU	FR BANNU	FT/69/13/001	M	16	3-May-13	0	3	Y	Y	Y	Y	NSL1	R4
10	FATA	KHYBER\$	BARA	FT/34/13/010	M	8	10-May-13	0	0	Y	Y	Y	N	NSL1	R4
11	FATA	KHYBER\$	BARA	FT/34/13/011	M	23	14-May-13	0	2	Y	Y	Y	N	NSL1	R4
12	FATA	KHYBER\$	BARA	FT/34/13/012	M	4	16-May-13	0	0	Y	N	Y	N	NSL1	R4
13	FATA	KHYBER\$	BARA	FT/34/13/013	M	24	11-May-13	2	3	Y	N	Y	N	NSL1	R4
14	FATA	FR BANNU	FR BANNU	FT/69/13/002	F	22	19-May-13	0	7+	Y	N	Y	N	NSL1	R4
15	FATA	KHYBER\$	BARA	FT/34/13/014	M	30	20-May-13	0	0	Y	N	Y	N	NSL1	R4
16	PUNJAB	MBDIN	MALIKWAL	PB/24/13/013	F	96	26-May-13	3	7+	Y	Y	Y	N	NSL1	R4
17	FATA	KHYBER\$	BARA	FT/34/13/015	M	15	06-June-13	0	0	Y	Y	Y	N	NSL1	R4
18	FATA	WAZIR-N\$	MIR ALI	FT/64/13/010	M	9	24-May-13	0	0	Y	Y	Y	N	NSL1	R4
19	FATA	WAZIR-N\$	MIR ALI	FT/64/13/014	F	11	15-June-13	0	0	Y	Y	Y	N	NSL1	R4
20	FATA	KHYBER\$	BARA	FT/34/13/019	F	12	23-June-13	0	0	Y	N	Y	N	NSL1	R4
21	KP	PESHAWAR	PESHAWAR	KP/30/13/042	M	12	30-June-13	0	0	Y	N	Y	Y	NSL1	R4
22	FATA	KHYBER\$	BARA	FT/34/13/020	F	12	03-July-13	0	0	N	N	Y	N	NSL1	

\$ Security compromised area

\* Afp.rec Data as of 15-08-2013

**Table 1.1: List of Confirmed Polio Cases, Pakistan 2013\* (2/2)**

S.NO.	PROVINCE/ REGION	DISTRICT	TEHSIL	EPID NO.	SEX	AGE (m)	DATE ONSET OF PARALYSIS	NO. OPV DOSES (based on parents recall)		FEVER	Asymmetric Paralysis	Rapid Progression	REFUSAL	WPV TYPE	GENETICS
								Route	SIA's						Cluster
23	SINDH	KHIGADDAP	GADDAP	SD/63/13/015	F	12	09-July-13	3	6	Y	Y	Y	N	NSL1	
24	FATA	WAZIR-N\$	MIR AN SHAH	FT/64/13/018	F	18	13-July-13	0	0	Y	Y	Y	N	NSL1	

\$ Security compromised area

\* Afp.rec Data as of 15-08-2013

**Table 2: LAB Update 2013\***

Month of Onset	AFP Cases	No virus isolated	Cases Under Process		Isolated Viruses from stools						
			Culture	ITD	Vaccine viruses		NPEV		Wild	Results within 14 days	
			n	n	n	%	n	%	n	n	%
January	333	275	0	0	19	6	37	11%	2	333	100%
February	330	285	0	0	16	5	26	8%	3	330	100%
March	308	248	0	0	7	2	52	17%	1	308	100%
April	352	244	0	0	22	6	84	24%	2	352	100%
May	419	304	0	0	15	4	91	22%	9	419	100%
June	468	325	0	0	21	4	118	25%	4	468	100%
July	370	213	23	8	11	3	112	30%	3	339	92%
August	71	2	67	0	0	0	2	3%	0	4	6%
Pakistan	2651	1896	90	8	111	4	522	20%	24	2553	96%

\* Data as of 19-08-2013

## Table 3: Urgent / ITD Pending Cases

Basic information										OPV doses				Urgent		Prov	Lab update			Remarks
S. #	District	Tehsil	Union council	Epid number	Date of Onset	Age (M)	Sex	Date of 1st stool	Stool Adeq	RI	S1As	Last 6 S1As	Last dose	By Field	By NSCY	Diagnosis	Lab No.	Days Inoc	Culture update	
<b>Isolates pending for ITSD</b>																				
1	FR BANNU	FR BANNU	HINDI KHEL	FT/69/13/006	27-Jul-13	18	M	05-Aug-13	Y	0	7+	3	10-Apr-13	Y	N	PO UD / GBS	3303	4	L20B+	
2	WAZIR-N	MIR ALI	HAIDER KHEL	FT/64/13/020	20-Jul-13	6	M	25-Jul-13	Y	0	0	0		Y	Y	PO UD / INU NEURITIS	3145	1	P2	Discordant ☹
3	WAZIR-N	MIR ALI	SAIDGAI	FT/64/13/021	22-Jul-13	12	M	26-Jul-13	Y	3	0	0		N	Y	GBS	3179	7	P2	Discordant ☹
4	WAZIR-N*	RAZMAK	DOSAU	FT/64/13/022	24-Jul-13	24	M	01-Aug-13	Y	0	6	0	23-Apr-12	N	N	GBS	3257	14	L20B+	INACCESSIBLE SINCE JUNE 2012
5	WAZIR-N*	MIR ALI	KHUSHAU	FT/64/13/023	31-Jul-13	12	M	03-Aug-13	Y	0	0	0		Y	Y	PO UD / GBS	3302	7	L20B+	BAN ON CAMPAIGN SINCE JUNE 2012
6	PESHAWAR	PESHAWAR	GULBAHAR	KP/30/13/054	31-Jul-13	28	M	31-Jul-13	Y	3	7+	6	28-May-13	N	N	TRAUMA	3240	13	L20B+	
7	GHOTKI	GHOTKI	BANDH	SD/42/13/041	20-Jul-13	18	M	23-Jul-13	Y	3	7+	6	17-Jun-13	N	N	HEMIPLEGIA/CVA	3127	7	P1	Discordant ☹
8	KHIGADAP	GADAP	4	SD/63/13/011	03-Jul-13	24	F	19-Jul-13	N	3	5	3	02-May-13	N	N	GBS	3065	5	P2	Discordant ☹
<b>Reported urgent (by field / NSCY criteria)</b>																				
9	FR BANNU	FR BANNU	HINDI KHEL	FT/69/13/004	21-Jul-13	10	M	02-Aug-13	Y	0	0	0		Y	Y	PO UD / GBS	3301	7	UP	
10	KHYBER	BARA	AKA KHEL	FT/34/13/022	02-Aug-13	18	M	06-Aug-13	Y	0	2	0	05-Jan-13	Y	Y	INU NEURITIS	3339	3	UP	INACCESSIBLE AREA
11	WAZIR-N	#	#	FT/64/13/026	06-Aug-13	12	M	12-Aug-13	#	#	#	#		Y	#	*	3379	3	UP	
12	WAZIR-N	#	#	FT/64/13/027	05-Aug-13	14	M	14-Aug-13	#	#	#	#		Y	#	*	3386	3	UP	
13	WAZIR-N	MIRAN SHAH	SAIDGAI	FT/64/13/028	09-Aug-13	10	M		#	0	0	0		Y	Y	PO UD / GBS	#		UP	SPECIMENS NOT RECEIVED IN LAB
14	WAZIR-N	SPINWAM	SAIDGAI	FT/64/13/029	05-Aug-13	12	M		#	0	0	0		Y	Y	Polb/Injection Neu-nit/GBS	#		UP	SPECIMENS NOT RECEIVED IN LAB
15	WAZIR-N	SPINWAM	SAIDGAI	FT/64/13/030	09-Aug-13	9	M		#	0	0	0		Y	Y	Butter Polb/GBS	#		UP	SPECIMENS NOT RECEIVED IN LAB
16	WAZIR-N	MIR ALI	SAIDGAI	FT/64/13/031	12-Aug-13	11	F	16-Aug-13	#	0	0	0		Y	Y	PO UD / GBS	#		UP	SPECIMENS NOT RECEIVED IN LAB
17	WAZIR-N	MIR ALI	SAIDGAI	FT/64/13/032	05-Aug-13	21	F		#	0	0	0		Y	Y	PO UD / GBS / TM / ATAXIA	#		UP	SPECIMENS NOT RECEIVED IN LAB

\* New L20B+    DPending for genomic sequencing    #Data not available    ✗ NSC Criteria = Fever, Rapid Progress, Age < 48 months and OPV Doses < 7    UP = Under process  
 Urgent (Field/NSC) / Inadequate specimens / Age 12-35 months / Zero OPV dose

# Summary of Laboratory data for Environmental Surveillance- Pakistan (Jan 2011 to date)

## Report for Epidemiological week= 33 (11 Aug – 17 Aug, 2013)



- Wild poliovirus type 1 (WPV1)
- Wild poliovirus type 3 (WPV3)
- Mixture WPV1 & WPV3
- No WPV Isolated
- Under process
- X Scheduled sampling, sample not collected
- No sampling scheduled
- Mixture WPV1 & VDPV type 2

### SUMMARY

Total Sites = 23

Total Samples Collected (2011-2012-2013) = 611

Total Samples with results available = 596

Total samples positive for Wild PV (2011-2012-2013) = **248** (136+88+24) (WPV1= 248)

Samples Positive for VDPV = 1 (Type 2 VDPV from KHI-Gadaap)



## **Comparison environmental sampling results 2012-13\***

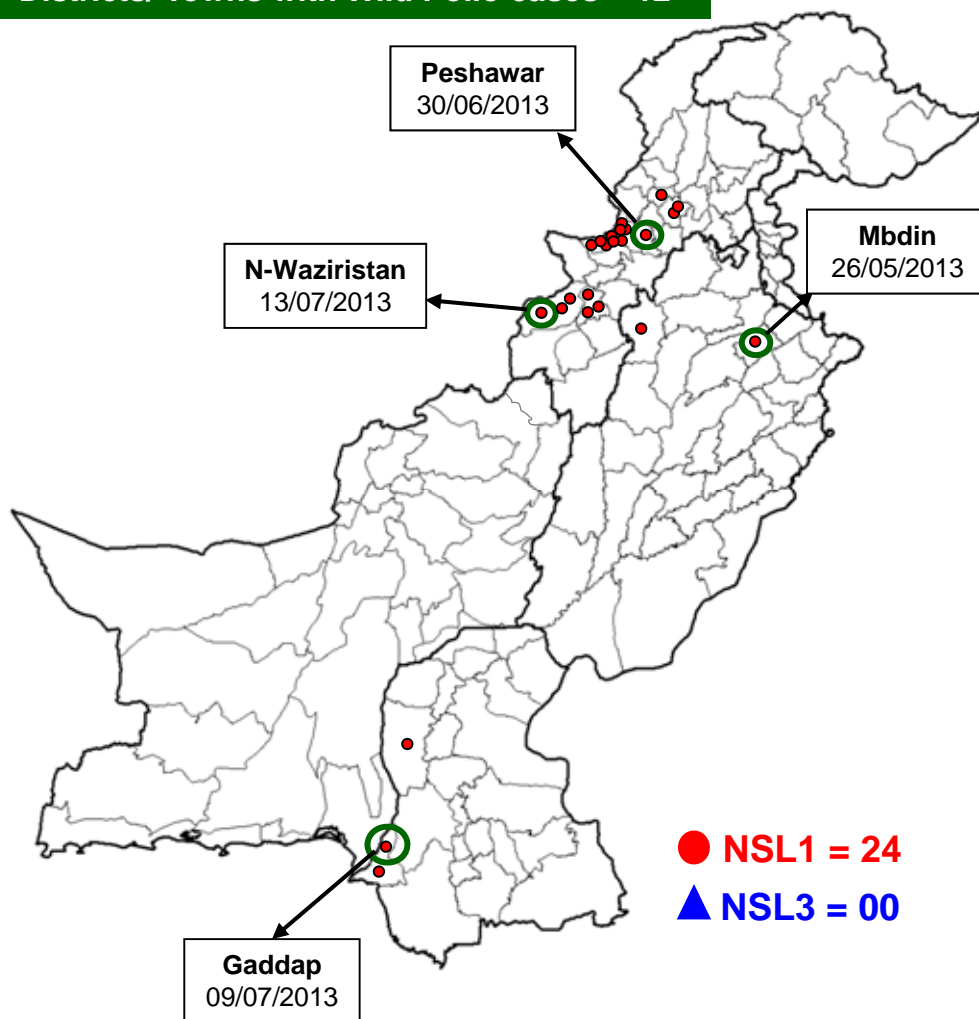
<b>District/ Town</b>	<b>2012</b>			<b>2013*</b>			<b>Last Isolate</b>
	<b>Total</b>	<b>Wild</b>		<b>Total</b>	<b>Wild</b>		
<b>Lahore</b>	20	13	65%	20	0	0%	20-Nov-12
<b>Multan</b>	19	4	21%	19	0	0%	18-Jun-12
<b>Rawalpindi</b>	6	4	67%	6	1	17%	25-Mar-13
<b>Faisalabad</b>	Sampling started week 36			13	1	8%	03-Jan-13
<b>G IQbal</b>	13	1	8%	13	0	0%	04-Oct-12
<b>Gadap</b>	13	7	54%	13	5	38%	08-July-13
<b>Baldia</b>	13	1	8%	13	0	0%	10-Jul-12
<b>Sukkur</b>	6	5	83%	13	0	0%	05-Sep-12
<b>Hyderabad</b>	1	1	100%	7	6	86%	10-Jul-13
<b>Peshawar</b>	13	10	77%	13	10	77%	10-Jul-13
<b>Quetta</b>	13	2	15%	18	1	6%	20-Feb-13
<b>Total</b>	117	48	41%	148	24	16%	10-Jul-13

\* Comparison of samples till week 28 of both years with available results

Data source Polio RRL

# Map1: Distribution of Wild Polio cases Pakistan 2013\*

Districts/ Towns with Wild Polio cases = 12



● NSL1 = 24

▲ NSL3 = 00

○ District with last polio case in province

Cases randomly placed in districts

— Provincial Boundary  
— Districts Boundary

\* Afp.rec Data as of 15-08-2013

Province/ Country	Date of Last Case		Number of cases 2013	
	P1	P3	P1	P3
PUNJAB	May, 2013	Jun, 2010	2	-
SINDH	July, 2013	Jan, 2010	3	-
KHYBER- PAKHTUNKHWA	Apr, 2013	Oct, 2010	5	-
FATA	July, 2013	Apr, 2012	14	-
BALUCHISTAN	Oct, 2012	Apr, 2010	-	-
AJK	-	Jun, 2000	-	-
GILGIT-BALTISTAN	Aug, 2012	-	-	-
ISLAMABAD	Sep, 2008	Sep, 2008	-	-
<b>PAKISTAN</b>	<b>July, 2013</b>	<b>Apr, 2012</b>	<b>24</b>	<b>-</b>

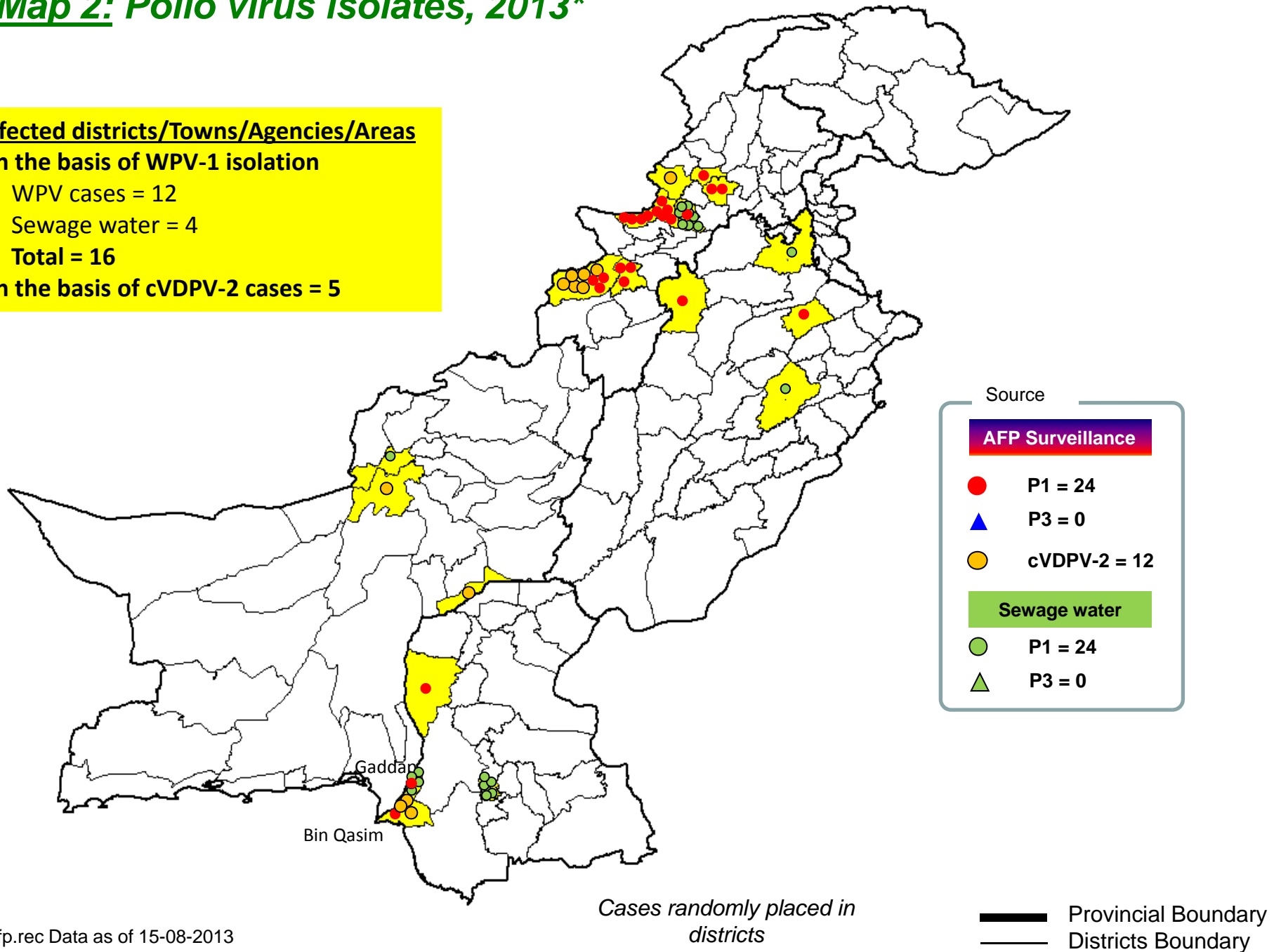
## Map 2: Polio virus isolates, 2013\*

### Infected districts/Towns/Agencies/Areas

#### On the basis of WPV-1 isolation

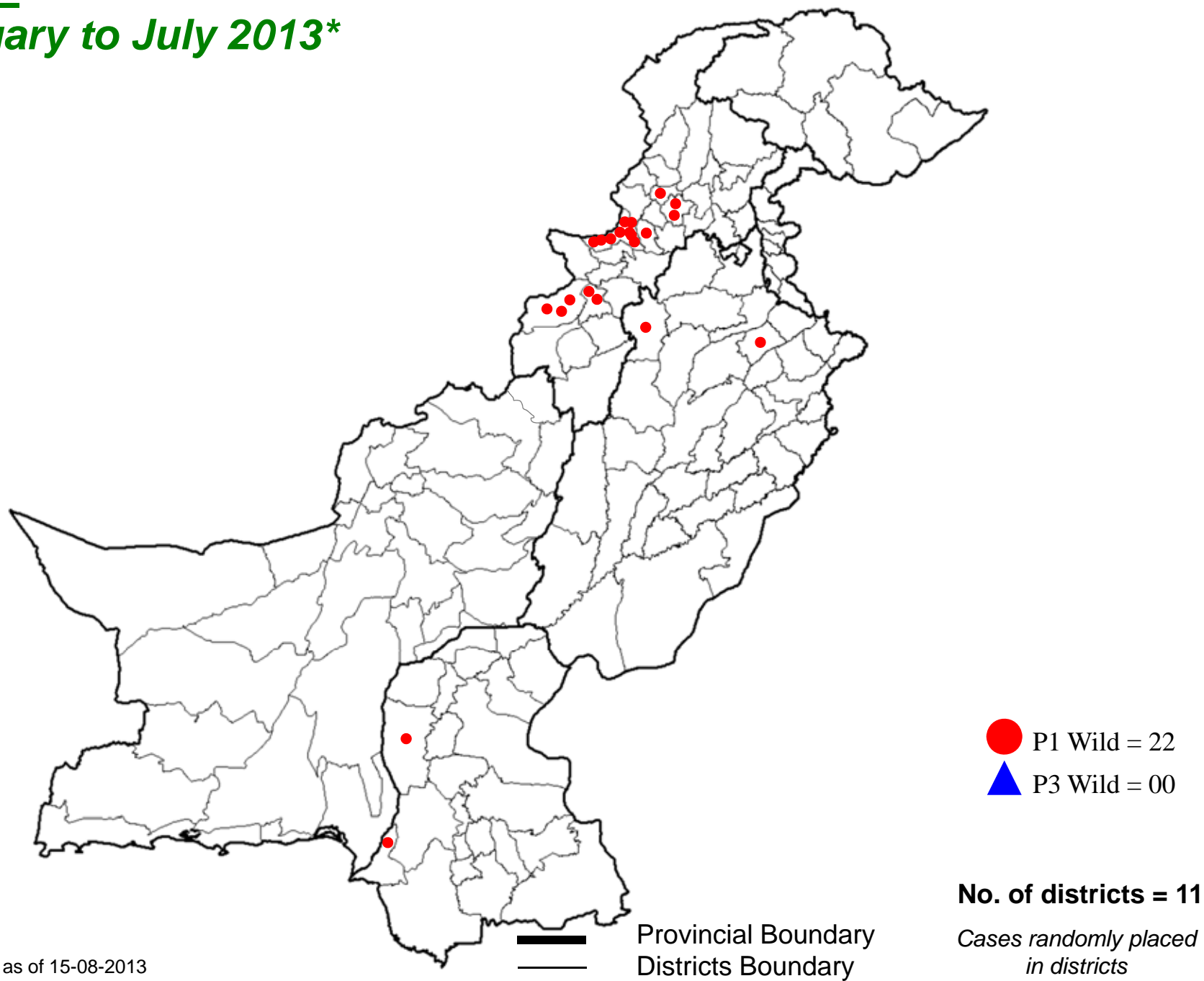
- WPV cases = 12
- Sewage water = 4
- Total = 16

#### On the basis of cVDPV-2 cases = 5



\* Afp.rec Data as of 15-08-2013

### Map 3: Wild Polio cases in the last 6 months from February to July 2013\*



\* Afp.rec Data as of 15-08-2013

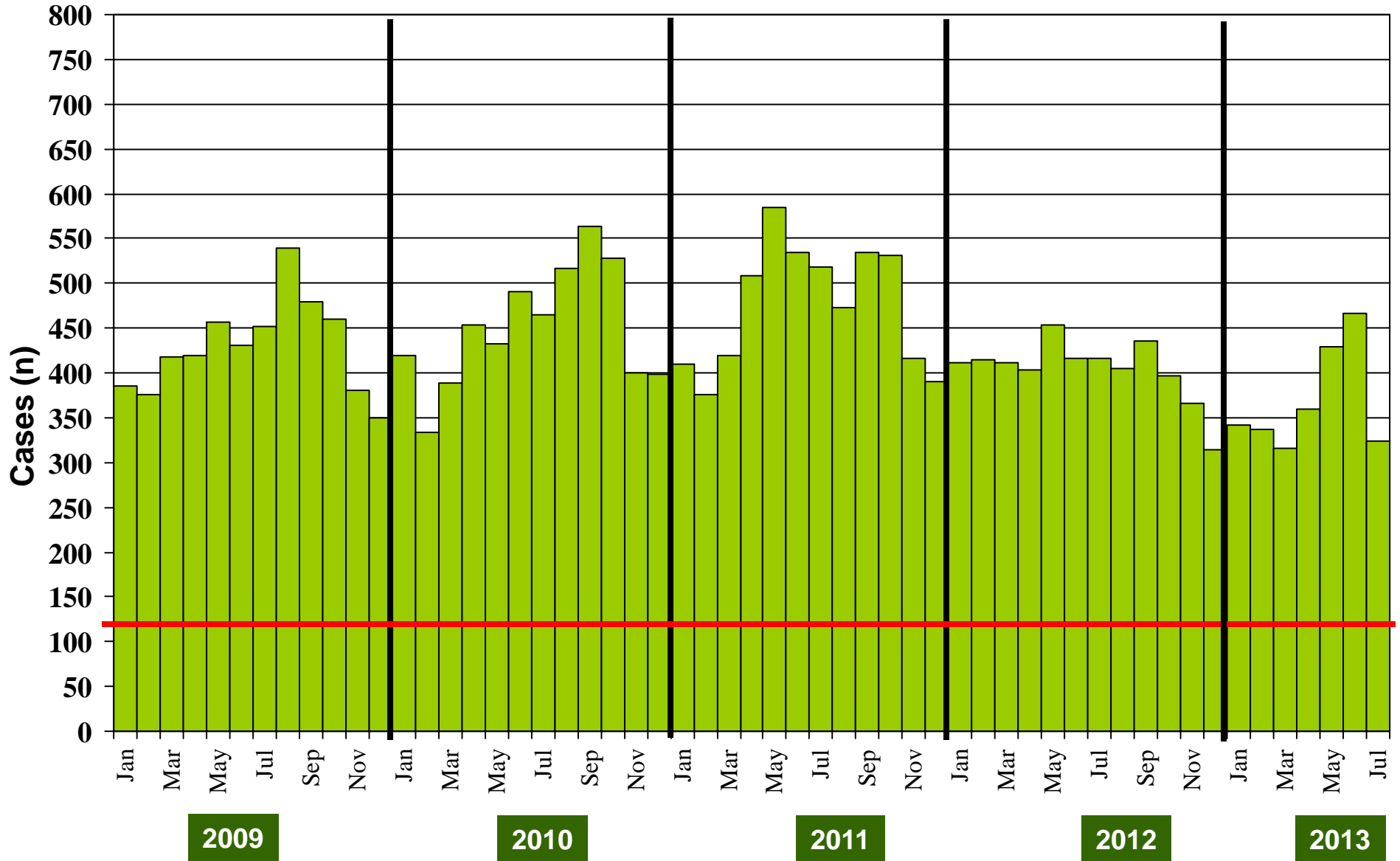
**Table 4: Distribution of AFP Cases By Week of Onset ^  
Pakistan 2013\* [Week number/Ending on]**

PROVINCE	W 18 04 May 2013	W 19 11 May 2013	W 20 18 May 2013	W 21 25 May 2013	W 22 01 June 2013	W 23 08 June 2013	W 24 15 June 2013	W 25 22 June 2013	W 26 29 June 2013	W 27 06 July 2013	W 28 13 July 2013	W 29 20 July 2013	W 30 27 July 2013	W 31 03 Aug 2013	W 32 10 Aug 2013
PUNJAB	50	45	53	56	45	63	61	47	40	44	45	44	33	41	3
SINDH	17	22	21	21	23	21	13	27	18	20	22	13	15	8	2
KP	16	15	9	12	36	21	21	14	11	16	19	16	16	12	4
FATA	2	7	7	5	2	6	6	1	4	7	5	2	5	2	0
BALUCHISTAN	1	1	7	7	6	7	4	8	5	3	2	5	3	2	0
AJK	2	0	2	0	1	2	1	2	1	2	0	1	2	0	0
GILGIT BILTISTAN	1	0	0	0	0	0	0	0	0	1	0	0	0	0	0
ISLAMABAD	0	2	0	2	0	2	0	0	0	1	0	0	1	0	0
<b>PAKISTAN</b>	<b>89</b>	<b>92</b>	<b>99</b>	<b>103</b>	<b>113</b>	<b>122</b>	<b>106</b>	<b>99</b>	<b>79</b>	<b>94</b>	<b>93</b>	<b>81</b>	<b>75</b>	<b>65</b>	<b>9</b>

\* Afp.rec & Afplab.rec: Data as of 15-08-2013

^ MMWR Epidemiological Weeks

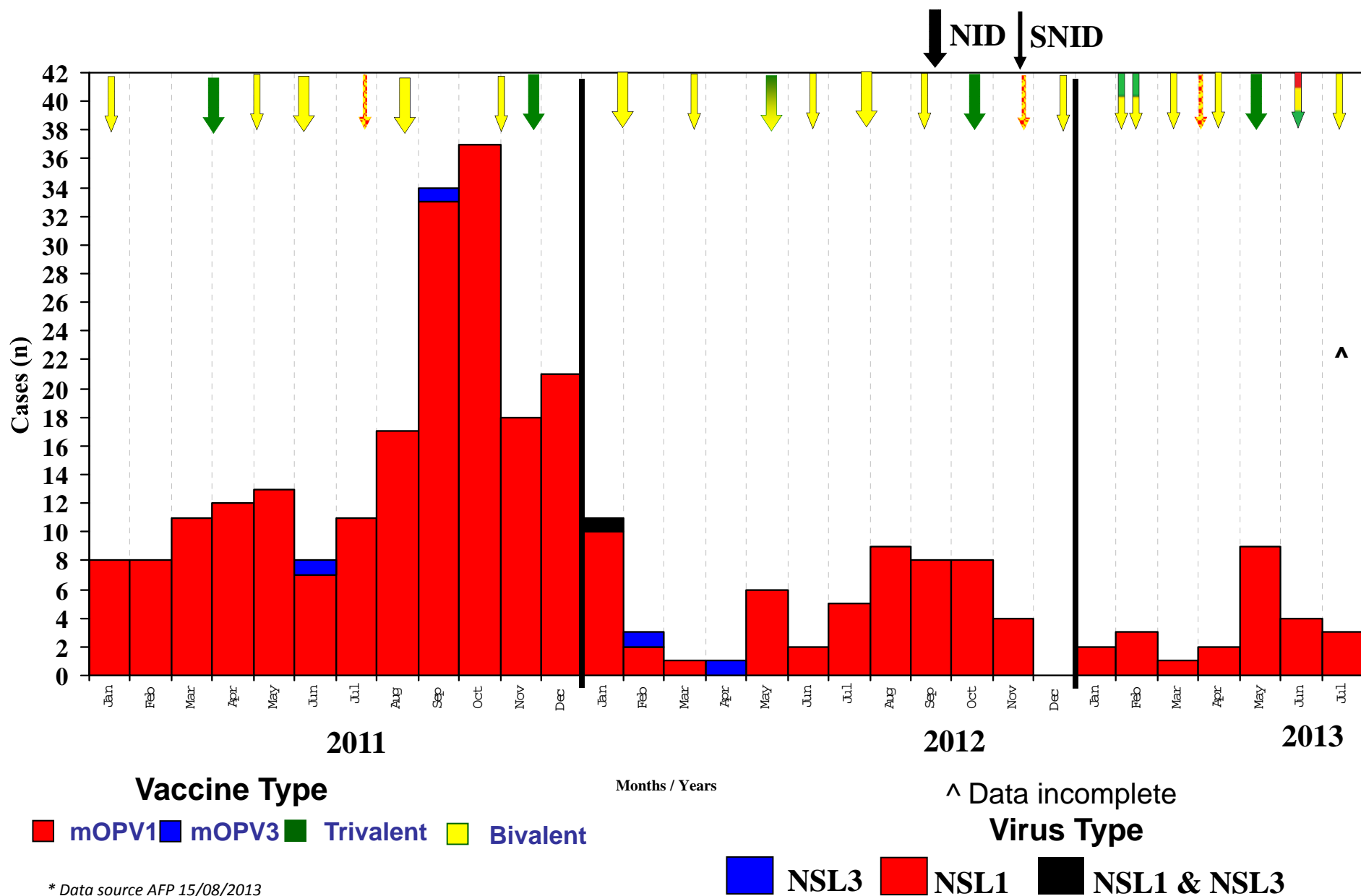
**Graph 1: Distribution of AFP Cases by Month, Pakistan 2009-2013\***



**@ Non-polio AFP rate of 2/100,000 children < 15 years**

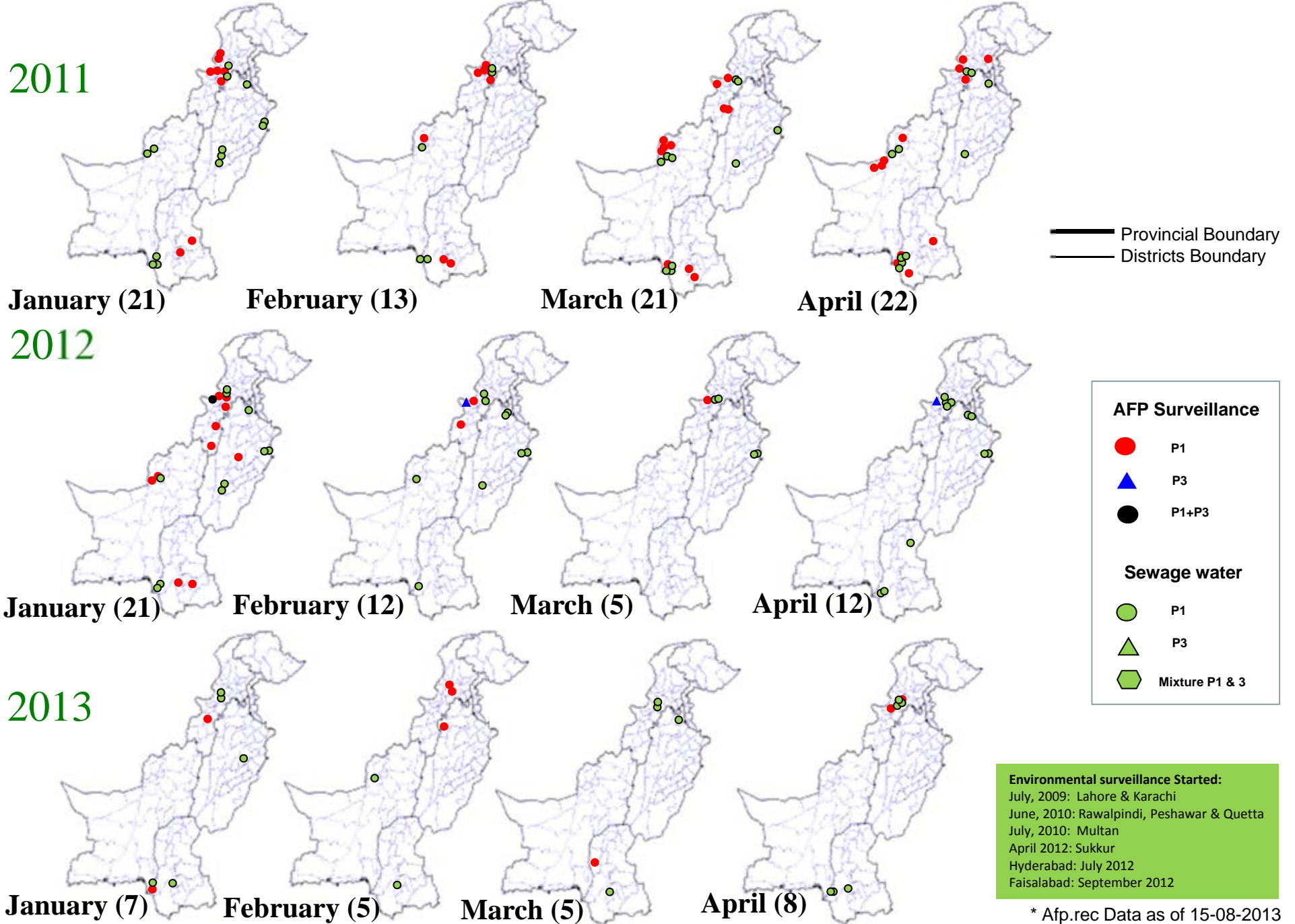
\*Afp.rec Data as of 15-08-2013

# Confirmed Polio Cases By Poliovirus Type, 2011-2013\*



\* Data source AFP 15/08/2013

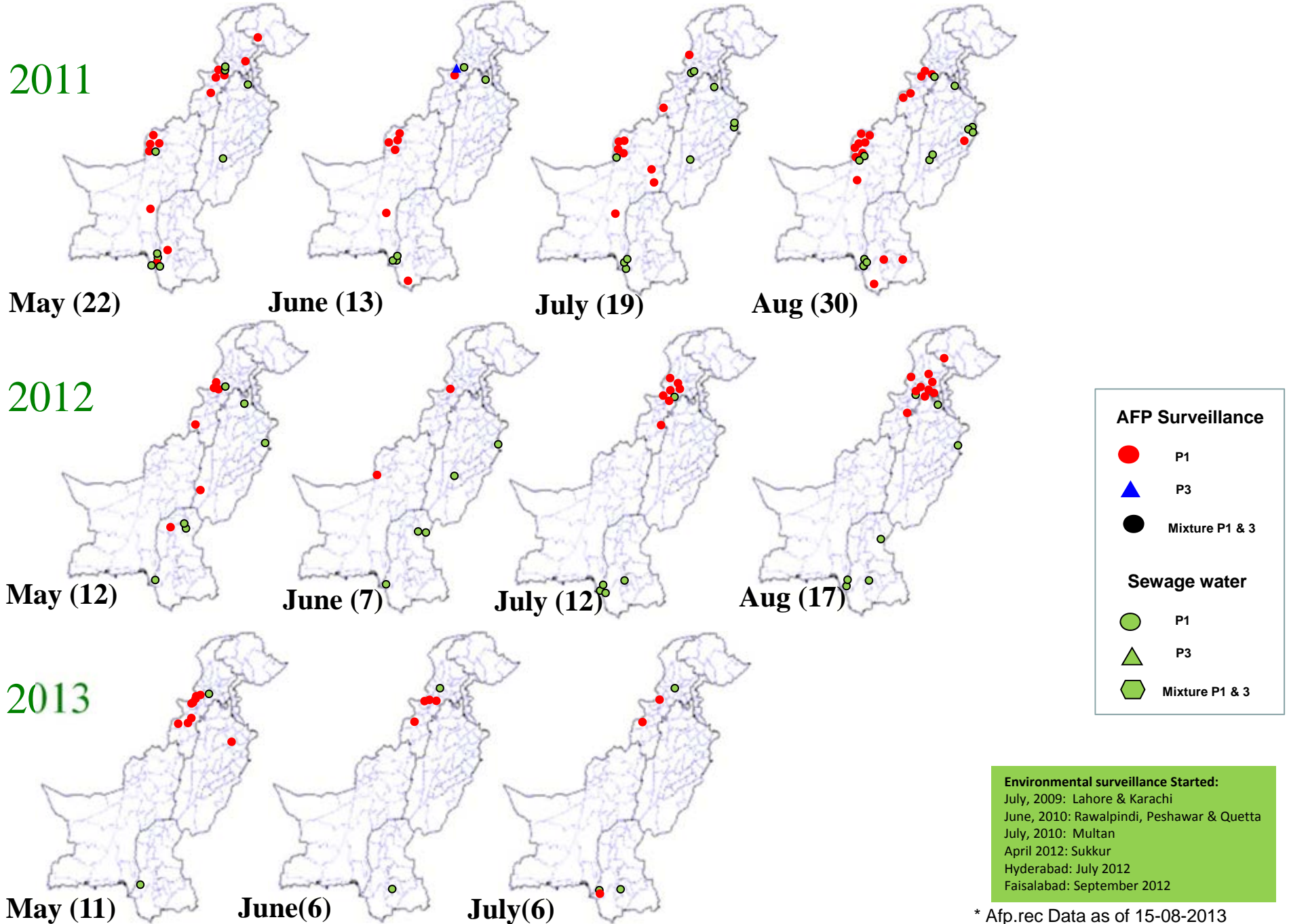
# Map 4: Monthly Comparison of P1 & P3 Polio Cases/Isolates 2011-2013\*



\* Afp.rec Data as of 15-08-2013

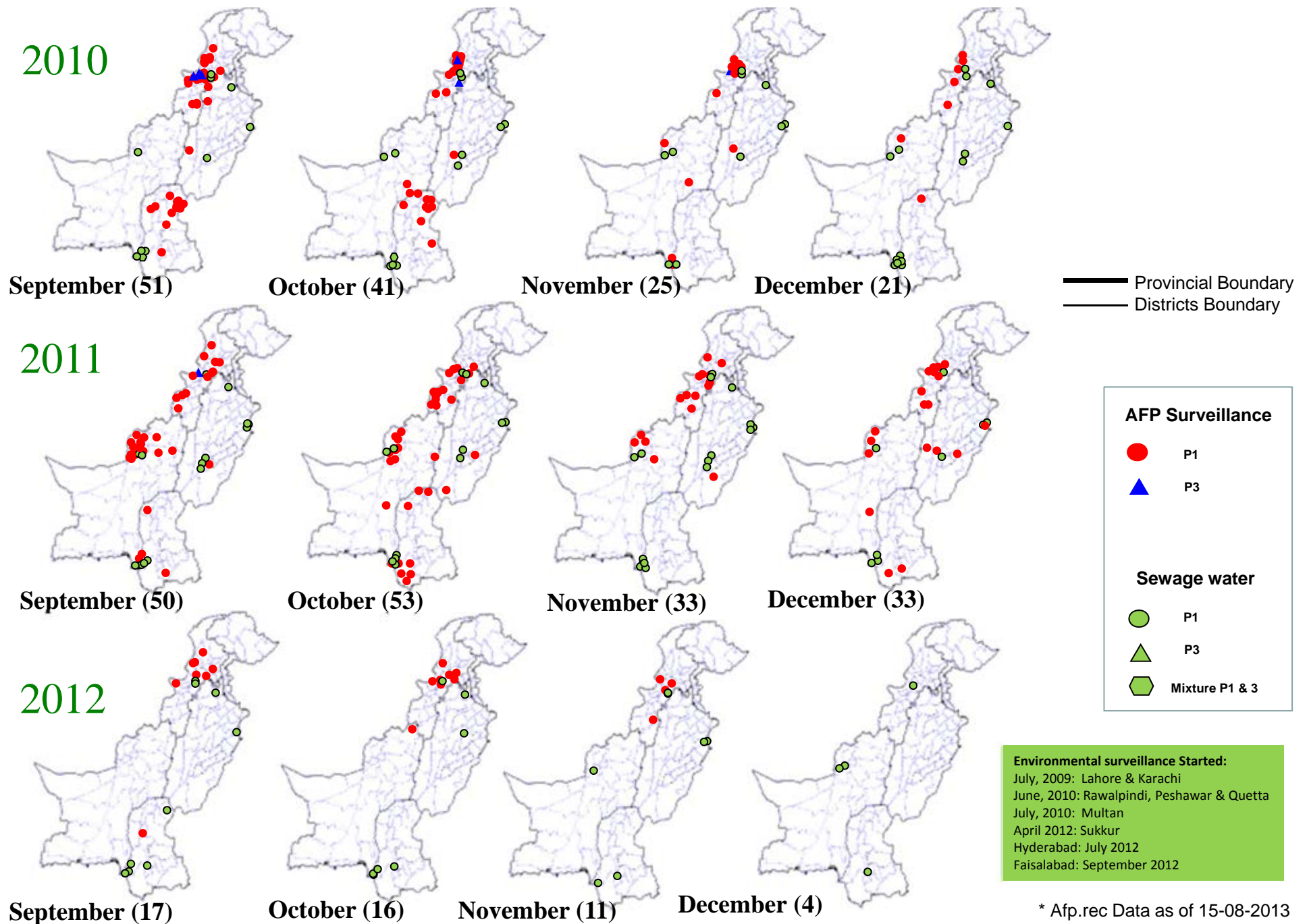


# Map 4.1: Monthly Comparison of P1 & P3 Polio Cases/Isolates 2011-2013\*



\* Afp.rec Data as of 15-08-2013

# Map 4.2: Monthly Comparison of P1 & P3 Polio Cases/Isolates 2010-2012\*

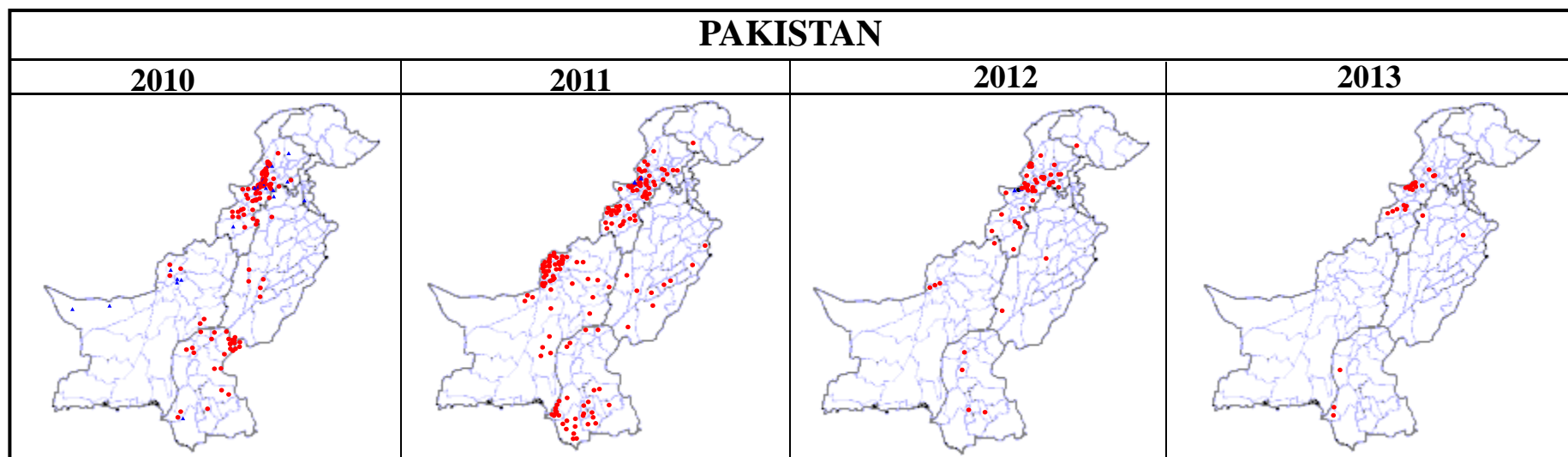


\* Afp.rec Data as of 15-08-2013

## Table 5: Polio Eradication Update, Pakistan 2010-2013\*

Province/Region	Polio 1				Polio 3				Total Wild			
	2010	2011	2012	2013	2010	2011	2012	2013	2010	2011	2012	2013
PUNJAB	6	9	2	2	1	0	-	-	7	9	2	2
SINDH	26	33	4	3	1	0	-	-	27	33	4	3
KP	19	23	27	5	5	0	-	-	24	23	27	5
FATA^	63	57	17	14	11	2	2	-	74	59	20^	14
BALUCHISTAN	6	73	4	-	6	0	-	-	12	73	4	-
AJK	0	0	-	-	0	0	-	-	0	0	-	-
Gilgit-Baltistan	0	1	1	-	0	0	-	-	0	1	1	-
ISLAMABAD	0	0	-	-	0	0	-	-	0	0	-	-
<b>PAKISTAN</b>	<b>120</b>	<b>196</b>	<b>55</b>	<b>24</b>	<b>24</b>	<b>2</b>	<b>2</b>	<b>-</b>	<b>144</b>	<b>198</b>	<b>58</b>	<b>24</b>

^ FATA reported mixture of NSL1 & NSL3



\* Afp.rec Data as of 15-08-2013

***Table 6: Vaccination status of non polio AFP cases age 6-59 months 2010-2013\****

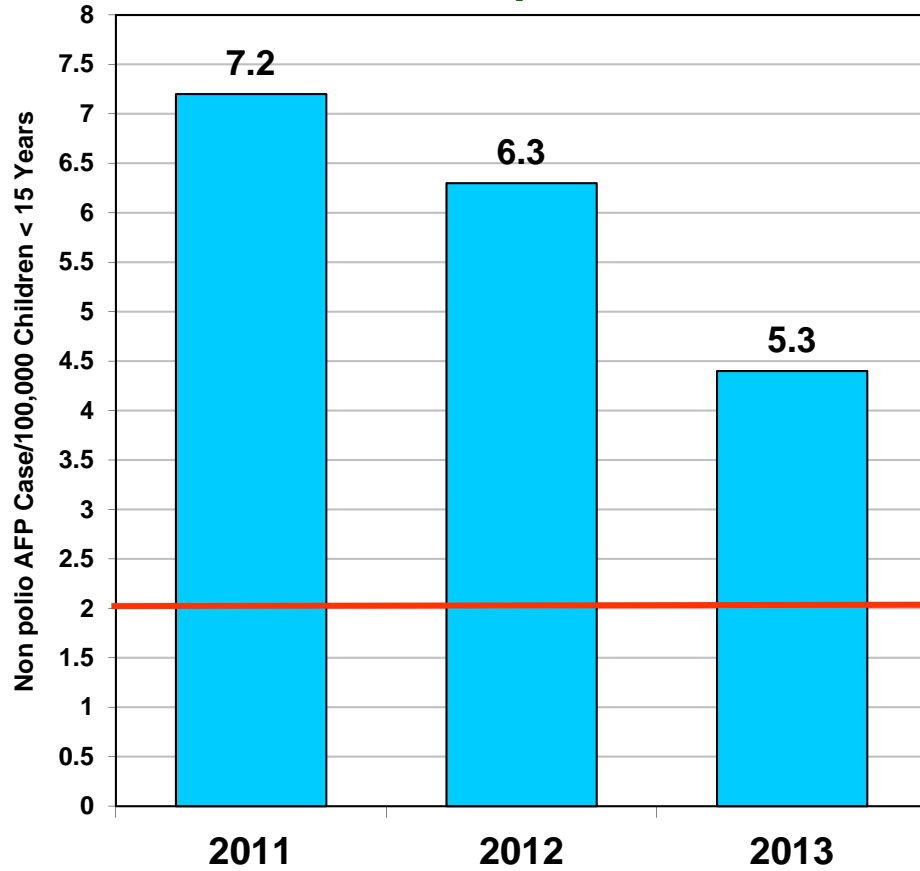
REGION	0 dose				1-2 doses				3 doses				4-6 doses				7+ doses			
	10	11	12	13	10	11	12	13	10	11	12	13	10	11	12	13	10	11	12	13
Central Punjab	0%	0%	0%	0%	1%	1%	0%	1%	1%	2%	0%	1%	7%	6%	4%	9%	91%	92%	95%	89%
North Punjab	0%	0%	0%	0%	0%	1%	0%	0%	2%	1%	0%	0%	6%	5%	4%	5%	91%	93%	96%	95%
South Punjab	0%	0%	0%	0%	1%	0%	0%	0%	0%	1%	0%	0%	5%	5%	4%	6%	94%	93%	96%	94%
<b>PUNJAB</b>	<b>0%</b>	<b>0%</b>	<b>0%</b>	<b>0%</b>	<b>1%</b>	<b>1%</b>	<b>0%</b>	<b>0%</b>	<b>1%</b>	<b>1%</b>	<b>0%</b>	<b>0%</b>	<b>6%</b>	<b>5%</b>	<b>4%</b>	<b>7%</b>	<b>92%</b>	<b>93%</b>	<b>96%</b>	<b>92%</b>
Karachi	2%	4%	1%	0%	0%	1%	1%	4%	3%	0%	2%	0%	7%	6%	6%	6%	88%	88%	90%	90%
North Sindh	0%	0%	0%	0%	1%	1%	0%	0%	0%	0%	1%	0%	4%	5%	4%	5%	95%	94%	94%	95%
South Sindh	0%	1%	0%	0%	1%	1%	1%	1%	1%	0%	2%	1%	9%	6%	4%	9%	89%	93%	93%	90%
<b>SINDH</b>	<b>1%</b>	<b>1%</b>	<b>0%</b>	<b>0%</b>	<b>1%</b>	<b>1%</b>	<b>1%</b>	<b>1%</b>	<b>1%</b>	<b>0%</b>	<b>1%</b>	<b>0%</b>	<b>7%</b>	<b>6%</b>	<b>4%</b>	<b>7%</b>	<b>91%</b>	<b>92%</b>	<b>93%</b>	<b>92%</b>
Central Khyber Pakhtunkhwa	1%	1%	2%	1%	0%	1%	1%	1%	1%	0%	0%	1%	2%	3%	2%	1%	97%	95%	95%	97%
North Khyber Pakhtunkhwa	2%	1%	2%	0%	1%	2%	2%	1%	2%	1%	2%	1%	6%	7%	9%	6%	89%	90%	85%	92%
South Khyber Pakhtunkhwa	3%	2%	2%	0%	3%	4%	1%	0%	3%	4%	1%	0%	14%	7%	9%	3%	76%	83%	87%	97%
<b>Khyber Pakhtunkhwa</b>	<b>1%</b>	<b>1%</b>	<b>2%</b>	<b>1%</b>	<b>1%</b>	<b>2%</b>	<b>1%</b>	<b>1%</b>	<b>2%</b>	<b>1%</b>	<b>1%</b>	<b>1%</b>	<b>6%</b>	<b>5%</b>	<b>6%</b>	<b>3%</b>	<b>90%</b>	<b>91%</b>	<b>89%</b>	<b>95%</b>
<b>FATA</b>	<b>14%</b>	<b>14%</b>	<b>18%</b>	<b>25%</b>	<b>11%</b>	<b>10%</b>	<b>6%</b>	<b>2%</b>	<b>6%</b>	<b>5%</b>	<b>3%</b>	<b>8%</b>	<b>18%</b>	<b>11%</b>	<b>12%</b>	<b>4%</b>	<b>51%</b>	<b>61%</b>	<b>62%</b>	<b>58%</b>
North Balochistan	12%	4%	12%	17%	0%	12%	10%	14%	4%	23%	3%	0%	12%	12%	17%	17%	72%	50%	57%	51%
Quetta Block	0%	31%	14%	12%	11%	10%	10%	12%	0%	3%	0%	0%	9%	14%	14%	12%	81%	43%	62%	64%
Rest of Balochistan	6%	7%	9%	5%	2%	2%	6%	5%	2%	5%	5%	5%	11%	10%	10%	23%	78%	76%	70%	64%
<b>BALUCHISTAN</b>	<b>5%</b>	<b>16%</b>	<b>8%</b>	<b>10%</b>	<b>4%</b>	<b>6%</b>	<b>8%</b>	<b>9%</b>	<b>2%</b>	<b>6%</b>	<b>3%</b>	<b>3%</b>	<b>11%</b>	<b>12%</b>	<b>17%</b>	<b>16%</b>	<b>78%</b>	<b>60%</b>	<b>64%</b>	<b>62%</b>
<b>PAKISTAN</b>	<b>1%</b>	<b>2%</b>	<b>1%</b>	<b>1%</b>	<b>1%</b>	<b>1%</b>	<b>1%</b>	<b>1%</b>	<b>1%</b>	<b>1%</b>	<b>1%</b>	<b>1%</b>	<b>7%</b>	<b>6%</b>	<b>5%</b>	<b>7%</b>	<b>89%</b>	<b>89%</b>	<b>92%</b>	<b>90%</b>

\* Afp.rec Data as of 15-08-2013

# Key Surveillance Indicators; 2011-2013\*

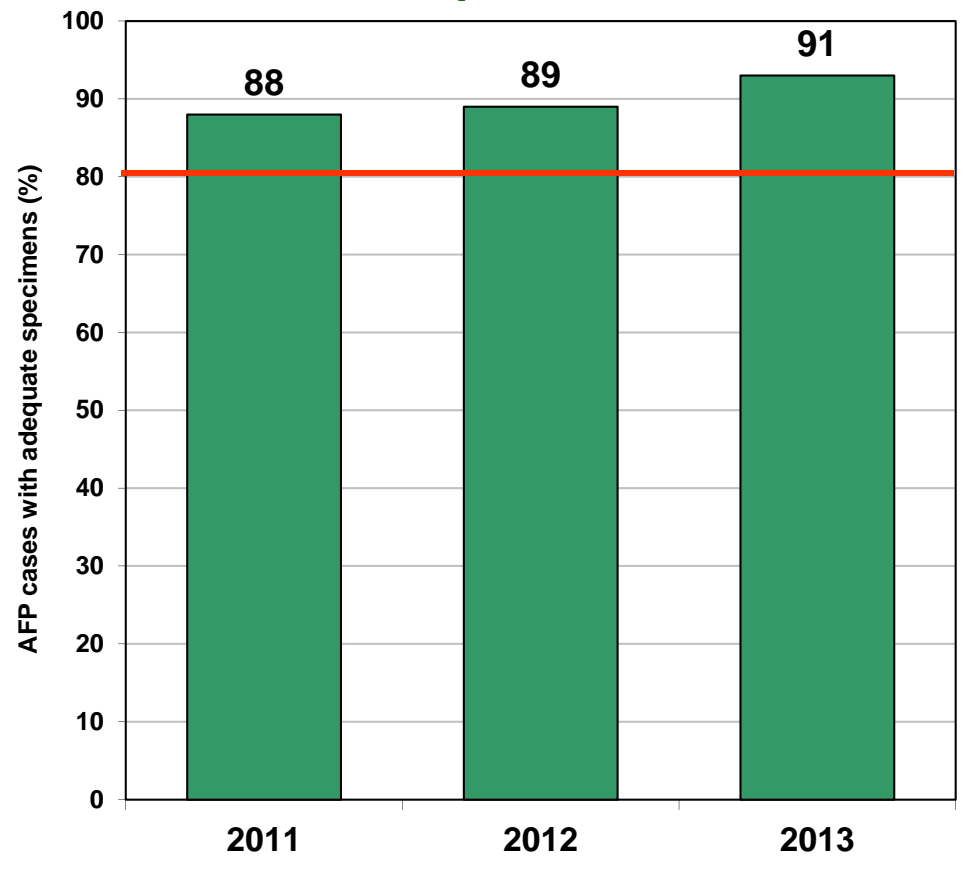
(Non polio AFP rate and % AFP cases with adequate specimens)

**Graph 3**



■ Non Polio AFP Rate

**Graph 4**



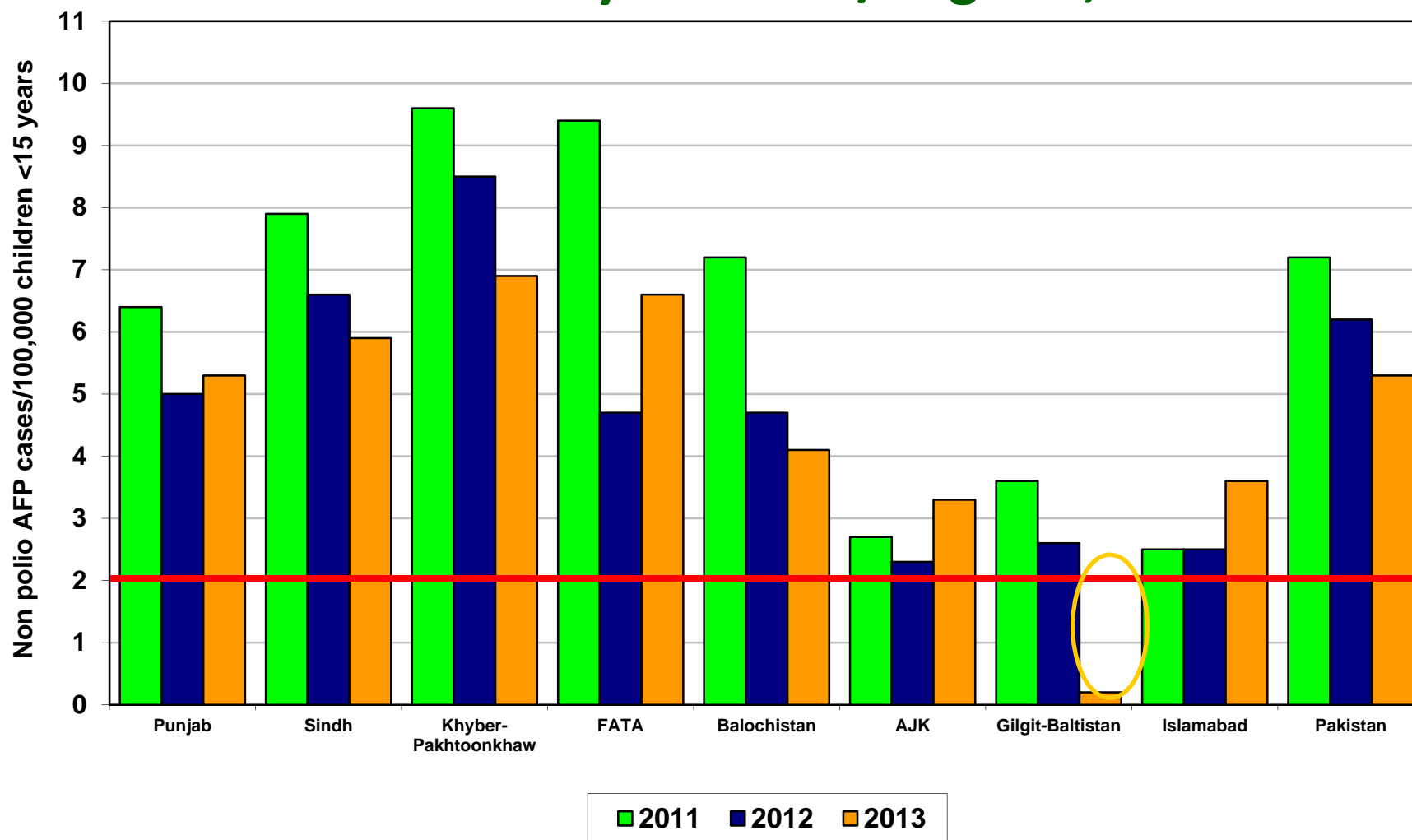
■ % AFP with Adequate Specimens

— Target

Non Polio AFP rate Up to Week No. 32 ended on 10<sup>th</sup> August, 2013

\* Afp.rec Data as of 15-08-2013

# Non Polio AFP Rate By Province/Regions, 2011-2013\*

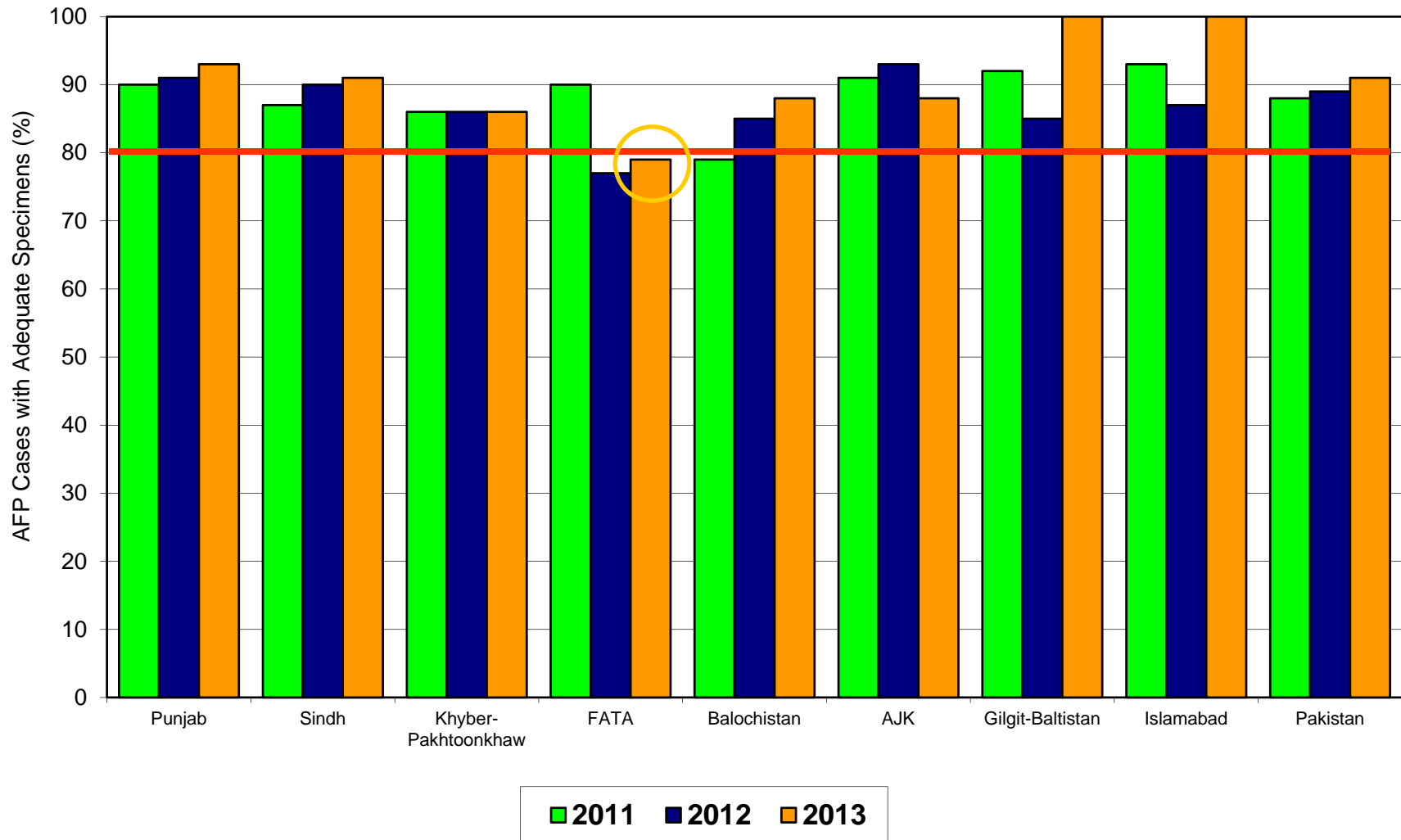


Non Polio AFP rate Up to Week No. 32 ended on 10<sup>th</sup> August, 2013

Target Non-Polio AFP Rate 2/ 100000 < 15 years of the age

\* Data source AFP 15/08/2013

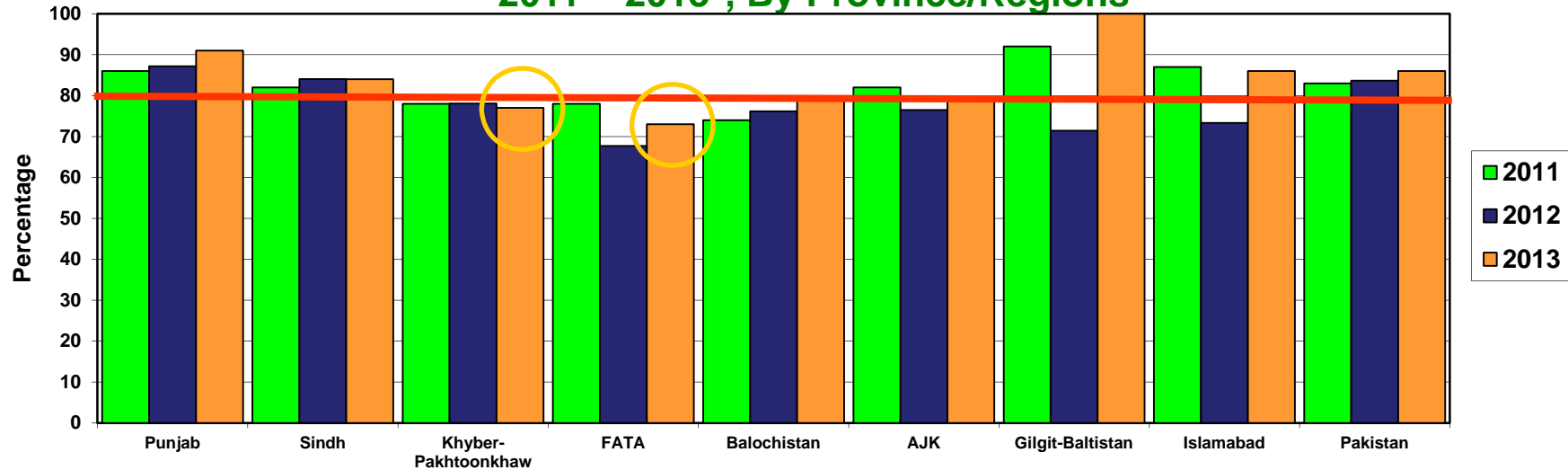
# Percent AFP Cases with Adequate Specimens By Province/Regions, 2011-2013\*



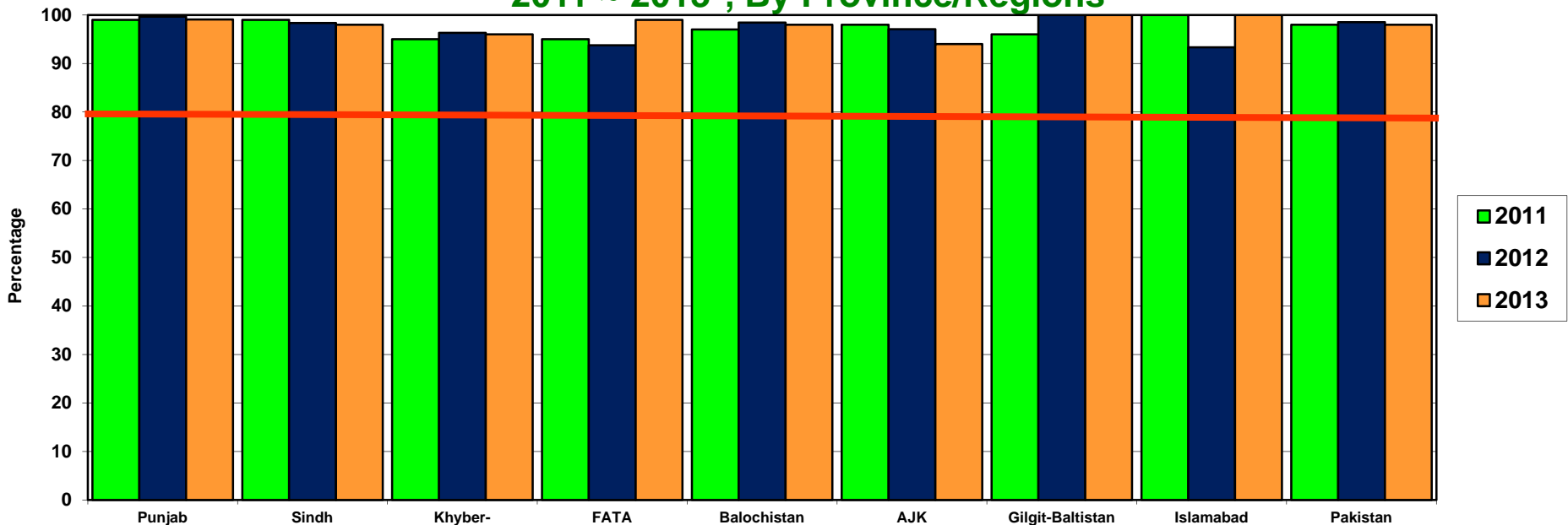
\* Data source AFP 15/08/2013

Target Adequate Sample cases = 80%

**Graph 5: Percent AFP Cases Notified within 07 days of paralysis onset  
2011 ~ 2013\*, By Province/Regions**



**Graph 6: Percent AFP Cases Investigated within 48 hours of notification  
2011 ~ 2013\*, By Province/Regions**

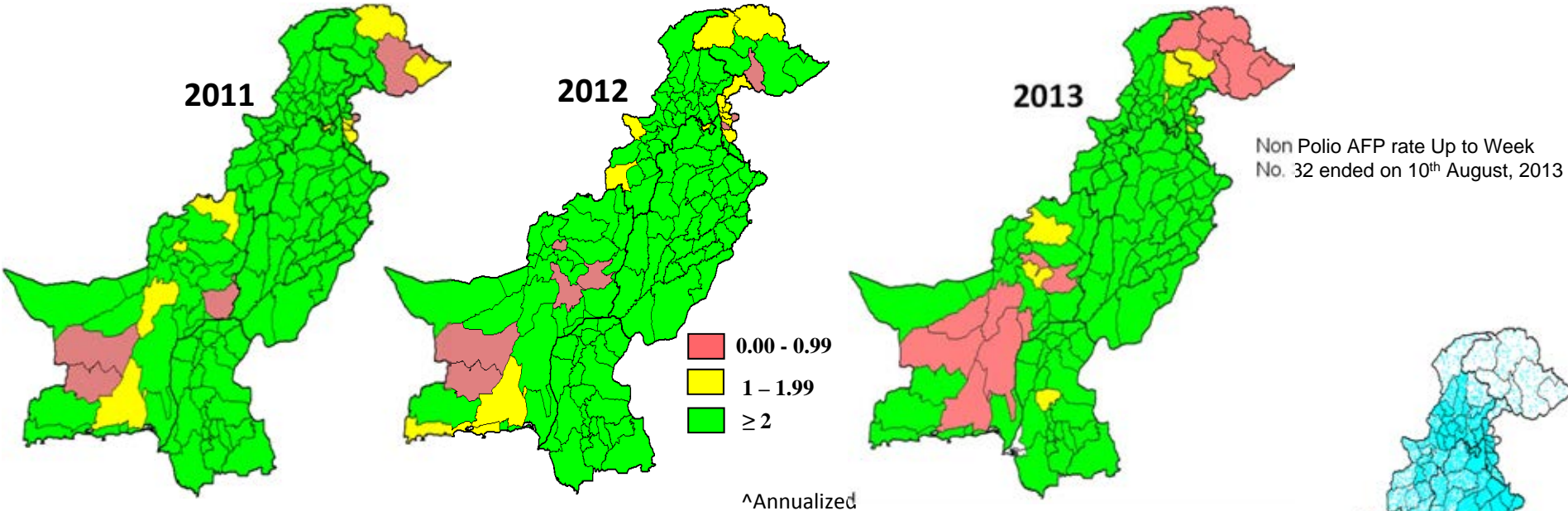


\* Afp.rec Data as of 15-08-2013

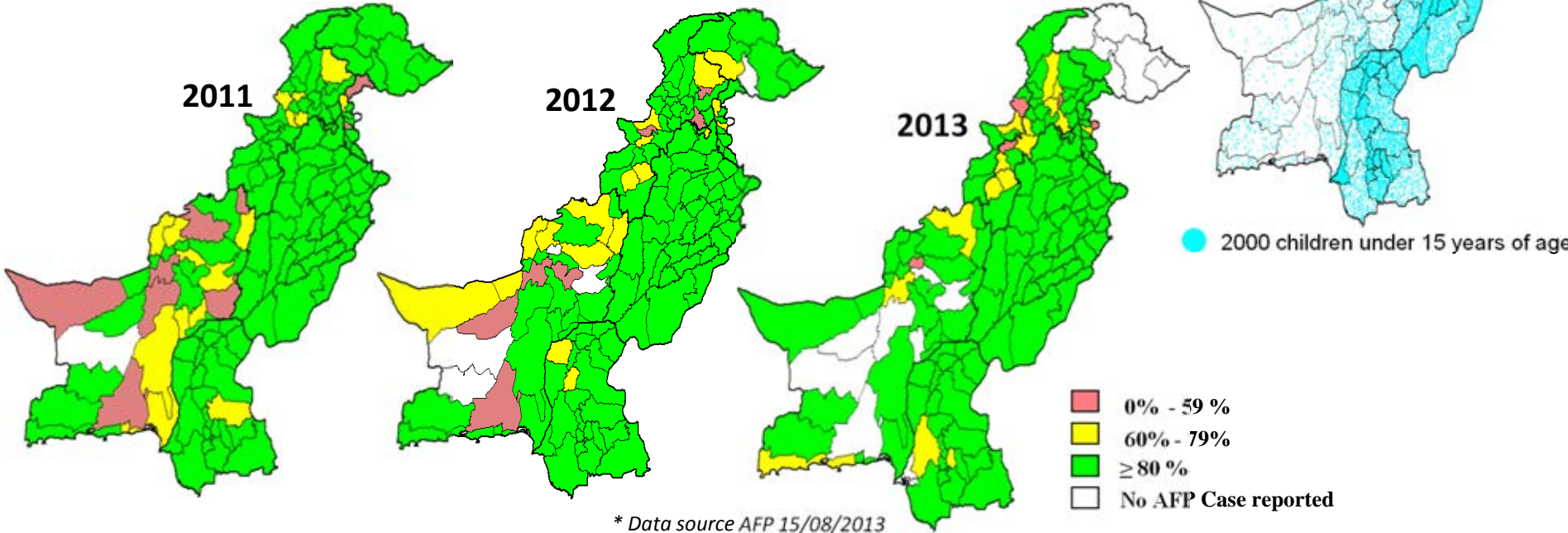
— Target



### Non-Polio^ AFP Rate by District



### Percent AFP Cases with Adequate Specimens, by District



**Table 7: AFP CASES PENDING FOR CLASSIFICATION WITH DATE OF ONSET MORE THAN 90 DAYS\* 2013 (1/2)**

S. No	DISTRICT	TEHSIL	EPID	SEX	AGE	DONSET	DOSE€	DSTOOL1	DSTOOL2	LAB	FEVER	ASVM	PROG	FUP	PEND (DAYS)	
1	KARAK	KARAK	KP/51/13/005	F	13	01-01-13	7+	15-02-13	17-02-13	EV	N	Y	Y	Y	226	
2	KHYBER	LANDI KOTAL	FT/34/13/003	M	84	10-02-13	7+	25-02-13	27-02-13	NVI	Y	N	Y		186	
3	KHYBER	JAMRUD	FT/34/13/004	F	16	22-01-13	7+	05-03-13	06-03-13	EV	Y	Y	Y		205	
4	MARDAN	MARDAN	KP/40/13/007	M	29	17-01-13	7+	06-02-13	07-02-13	EV	Y	Y	Y	Y	210	
5	PESHAWAR	PESHAWAR	KP/30/13/008	M	96	15-01-13	7+	26-02-13	27-02-13	NVI	N	N	Y	Y	212	
6	SWAT	SWAT	KP/24/13/004	M	120	20-02-13	7+	Child Died Before Stool Collection			Y	N	Y	DIED	176	
7	WAZIR-N	MIRAN SHAH	FT/64/13/001	M	96	08-02-13	6	13-02-13		NVI	Y	N	Y	DIED	188	
8	FAISALABAD	JARANWALA	PB/51/13/045	F	10	01-03-13	1	Late Notified			N	Y	Y	Y	167	
9	MUZFARGARH	ALIPUR	PB/83/13/057	M	30	25-04-13	7+				Y	Y	Y	Y	Y	112
10	MUZFARGARH	ALIPUR	PB/83/13/054	M	30	25-04-13	7+				Y	Y	Y	Y	Y	112
11	RAWALPINDI	RAWALPINDI	PB/11/13/028	M	132	13-05-13	7+	03-06-13	05-06-13	NVI	N	N	Y	Y	94	
12	HYDERABAD	HYDERABAD RURAL	SD/21/13/006	M	84	01-04-13	7+	Child Died Before Stool Collection			Y	N	Y	DIED	136	
13	JACOBABAD	THUL	SD/53/13/013	M	156	16-05-13	7+	11-06-13	15-06-13	NVI	Y	Y	Y	Y	91	
14	JAMSHORO	T.B.KHAN	SD/25/13/009	F	18	03-05-13	7+	25-05-13	12-06-13	NVI	N	N	Y	Y	104	
15	KAMBAR	WARAH	SD/55/13/006	M	96	01-01-13	7+	Late Notified			N	Y	Y	Y	226	
16	KHUJAMSHEED	JAMSHEED	SD/66/13/004	F	60	01-05-13	7+	Child Died Before Stool Collection			Y	N	Y	DIED	106	
17	KHISADDAR	SADDAR	SD/77/13/004	F	38	05-04-13	7+	10-05-13	11-05-13	NVI	N	N	Y	Y	132	
18	NFEROZ	BHIRIA	SD/45/13/003	F	144	05-02-13	7+	Child Died Before Stool Collection			Y	Y	Y	DIED	191	
19	NFEROZ	MORO	SD/45/13/013	F	54	10-05-13	7+	01-06-13	02-06-13	NVI	N	Y	Y	Y	97	
20	SANGHAR	KHIPRO	SD/32/13/005	M	144	05-03-13	7+	Late Notified			N	N	Y	Y	163	
21	BANNU	BANNU	KP/61/13/010	M	53	30-04-13	7+				Y	N	N	Y	Y	107
22	BUNIR	DAGGAR	KP/22/13/008	M	35	12-03-13	7+	01-04-13	02-04-13	NVI	Y	Y	Y	Y	156	
23	BUNIR	DAGGAR	KP/22/13/007	M	132	28-02-13	7+	30-03-13	31-03-13	NVI	N	N	Y	Y	168	
24	BUNIR	DAGGAR	KP/22/13/015	M	72	01-01-13	7+	Late Notified			Y	Y	Y	Y	226	
25	CHARSADA	TANGI	KP/31/13/038	M	24	01-05-13	7+	17-06-13	18-06-13	EV	Y	Y	Y		106	
26	DIKHAN	KULACHI	KP/60/13/013	F	18	22-04-13	5	16-06-13	17-06-13	VACC	N	Y	Y	Y	115	
27	DIRLOWER	SAMAR BAGH	KP/23/13/015	F	13	30-01-13	7+	Late Notified			Y	Y	Y	Y	197	
28	HARIPUR	HARIPUR	KP/12/13/005	M	66	18-01-13	7+	19-02-13	20-02-13	EV	N	N	Y	Y	209	
29	HARIPUR	HARIPUR	KP/12/13/012	F	20	18-04-13	7+	19-05-13	20-05-13	EV	Y	Y	Y	Y	119	
30	MANSEHRA	MANSEHRA	KP/14/13/005	M	168	17-03-13	7+	Child Died Before Stool Collection			N	N	Y	DIED	151	
31	MARDAN	TAKHT BHAI	KP/40/13/034	M	5	10-03-13	6	Late Notified			N	Y	UK	Y	158	
32	NOWSHERA	NOWSHERA	KP/32/13/012	F	108	15-03-13	7+	Child Died Before Stool Collection			Y	N	Y	DIED	153	
33	PESHAWAR	PESHAWAR	KP/30/13/022	F	22	06-02-13	7+	Late Notified			N	N	N	Y	190	
34	PESHAWAR	PESHAWAR	KP/30/13/026	M	24	17-04-13	0	17-05-13	19-05-13	EV	Y	Y	Y	Y	120	
35	PESHAWAR	PESHAWAR	KP/30/13/039	F	54	03-05-13	7+	14-06-13	15-06-13	EV	Y	Y	Y		104	
36	SHANGLA	MARTOONG	KP/26/13/001	M	72	08-01-13	7+	Late Notified			Y	Y	Y	LOST	219	
37	SWAT	SWAT	KP/24/13/006	F	132	02-04-13	7+	10-04-13		NVI	N	N	Y	DIED	135	
38	SWAT	SWAT	KP/24/13/009	M	16	19-04-13	7+	14-05-13	15-05-13	NVI	Y	N	N	Y	118	
39	SWAT	SWAT	KP/24/13/012	F	120	30-03-13	7+	27-05-13	28-05-13	NVI	N	N	Y		138	
40	TANK	TANK	KP/63/13/005	M	42	25-02-13	7+	27-04-13	28-04-13	NVI	Y	N	UK	Y	171	
41	TORGHAR	TORGHAR	KP/15/13/001	M	48	23-04-13	7+	13-05-13	15-05-13	NVI	N	Y	Y		114	
42	QUETTA	QUETTA CITY	BN/11/13/006	F	9	12-04-13	7+	27-05-13	28-05-13	NVI	N	Y	Y	Y	125	

€ Based on recall of parents  
\* Afp.rec Data as of 15-08-2013

60 days Follow-up not done

FUP = Residual Weakness at 60 days follow up.

**Table 7.1: AFP CASES PENDING FOR CLASSIFICATION WITH DATE OF ONSET MORE THAN 90 DAYS\* 2013 (2/2)**

S. No	DISTRICT	TEHSIL	EPID	SEX	AGE	DONSET	DOSE€	DSTOOL1	DSTOOL2	LAB	FEVER	ASYM	PROG	FUP	PEND (DAYS)
43	ZHOB	ZHOB	BN/21/13/002	F	84	05-05-13	7+	30-05-13	31-05-13	NVI	Y	Y	Y	Y	102
44	BAGH	BAGH	AJ/50/13/001	M	80	23-01-13	7+	17-02-13	18-02-13	NVI	N	N	Y	Y	204
45	BAJOUR	MAMUND	FT/33/13/007	M	45	02-01-13	7+	Late Notified			N	Y	Y	Y	225
46	KHYBER	LANDI KOTAL	FT/34/13/005	M	132	09-03-13	7+	12-03-13		EV	N	N	Y		159
47	KHYBER	JAMRUD	FT/34/13/002	F	24	18-01-13	7+	21-02-13	23-02-13	NVI	N	Y	Y		209
48	MOHMAND	PINDIALI	FT/35/13/006	F	17	05-05-13	7+	17-06-13	18-06-13	NVI	Y	Y	Y		102
49	MOHMAND	UPPER MOHMAND	FT/35/13/003	F	18	18-04-13	7+	07-05-13	08-05-13	NVI	Y	Y	Y		119
50	MOHMAND	PINDIALI	FT/35/13/002	M	24	13-03-13	7+	28-03-13	29-03-13	VACC	UK	Y	Y		155
51	WAZIR-N	MIRAN SHAH	FT/64/13/007	M	48	25-04-13	5	10-05-13	12-05-13	NVI	Y	N	Y	Y	112

€ Based on recall of parents  
\* Afp.rec Data as of 15-08-2013

60 days Follow-up not done

FUP = Residual Weakness at 60 days follow up.