



**World Health
Organization**

Weekly AFP Surveillance Update Pakistan

Week 32 (*Ended on 10th August, 2013*)

AFP Surveillance



National Surveillance Cell Federal EPI

World Health Organization Country Office,
Chak Shahzad, Park Road,
Islamabad, Pakistan

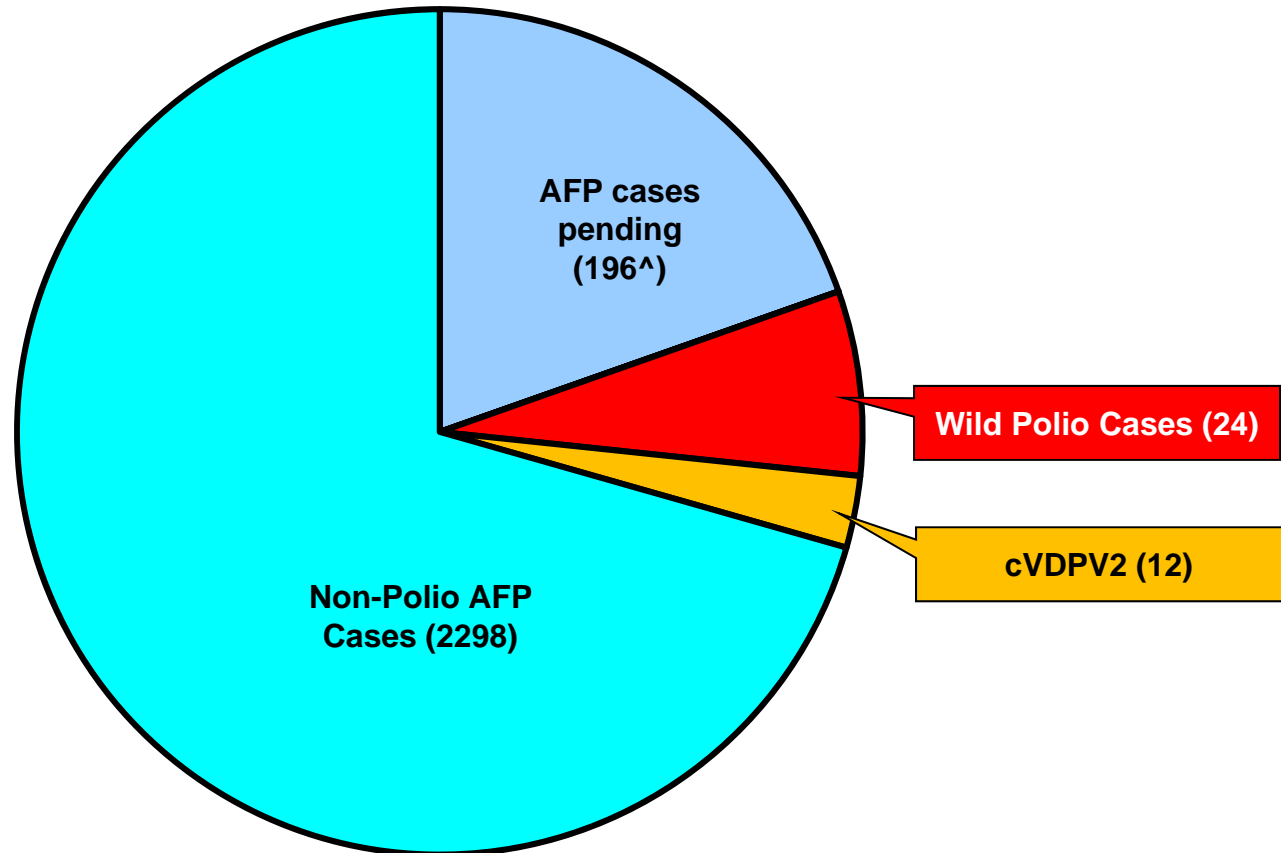
Tel: +92-51 9255123 / 9255282 /9255184

Fax: +92-51 9255274

Email: epidata@pak.emro.who.int

Web site: www.who.gov.pk

AFP Case Profile, 2013*



Total AFP Cases Reported = 2530

[^]48 Inadequate cases pending classification by ERC;
[^]73 Inadequate cases not due for FUP
[^]75 Pending in the Lab

Comparison of polio cases by province/region 2012[§] & 2013*

Region/ Province	No. of polio cases		No. of infected districts/towns		Last polio case
	2012	2013	2012	2013	
Khyber Pakhtunkhwa	10	5	8	4	30-June-13
FATA / FR Areas	13	14	4	3	13-July-13
Sindh	3	3	3	3	09-July-13
Balochistan	3	-	1	-	02-Oct-12
Punjab	2	2	2	2	26-May-13
Gilgit-Baltistan	1	-	1	-	06-Aug-12
Pakistan	32	24	19	12	13-July-13

Five additional districts/town declared infected based on environmental samples 2013

Total polio cases of 2012 are 58

* Afp.rec Data as of 08-08-2013

§Based on date of onset

Table 1: List of Confirmed Polio Cases, Pakistan 2013* (1/2)

S.NO.	PROVINCE/ REGION	DISTRICT	TEHSIL	EPID NO.	SEX	AGE (m)	DATE ONSET OF PARALYSIS	NO. OPV DOSES (based on parents recall)		FEVER	Asymetric Paralysis	Rapid Progression	REFUSAL	W/PV TYPE	GENETICS
								Route	SIA's						Cluster
1	SINDH	BIN QASIM	BIN QASIM	SD/62/13/001	M	24	14-Jan-13	0	0	N	Y	Y	Y	NSL1	R4
2	KP	BANNU	BANNU	NW/61/13/002	M	13	26-Jan-13	0	0	Y	N	Y	Y	NSL1	R4
3	KP	MALAKAND	DARGAI	NW/20/13/006	F	3	08-Feb-13	2	2	Y	N	Y	N	NSL1	R4
4	KP	MARDAN	MARDAN	NW/40/13/009	M	30	12-Feb-13	3	7+	Y	N	Y	N	NSL1	R4
5	PUNJAB	MIWANWALI	ISAKHEL	PB/43/13/005	F	36	07-Feb-13	3	7+	Y	N	Y	N	NSL1	R4
6	SINDH	DADU	MEHAR	SD/24/13/006	F	15	22-Mar-13	0	2	Y	N	Y	N	NSL1	R2
7	KP	MARDAN	MARDAN	NW/40/13/026	M	8	22-Apr-13	0	0	Y	Y	Y	Y	NSL1	R4
8	FATA	KHYBER\$	BARA	FT/34/13/008	M	10	24-Apr-13	2	4	Y	Y	N	N	NSL1	R4
9	FATA	FR BANNU	FR BANNU	FT/69/13/001	M	16	3-May-13	0	3	Y	Y	Y	Y	NSL1	R4
10	FATA	KHYBER\$	BARA	FT/34/13/010	M	8	10-May-13	0	0	Y	Y	Y	N	NSL1	R4
11	FATA	KHYBER\$	BARA	FT/34/13/011	M	23	14-May-13	0	2	Y	Y	Y	N	NSL1	R4
12	FATA	KHYBER\$	BARA	FT/34/13/012	M	4	16-May-13	0	0	Y	N	Y	N	NSL1	R4
13	FATA	KHYBER\$	BARA	FT/34/13/013	M	24	11-May-13	2	3	Y	N	Y	N	NSL1	R4
14	FATA	FR BANNU	FR BANNU	FT/69/13/002	F	22	19-May-13	0	7+	Y	N	Y	N	NSL1	R4
15	FATA	KHYBER\$	BARA	FT/34/13/014	M	30	20-May-13	0	0	Y	N	Y	N	NSL1	R4
16	PUNJAB	MBDIN	MALIKWAL	PB/24/13/013	F	96	26-May-13	3	7+	Y	Y	Y	N	NSL1	R4
17	FATA	KHYBER\$	BARA	FT/34/13/015	M	15	06-June-13	0	0	Y	Y	Y	N	NSL1	R4
18	FATA	WAZIR-N\$	MIR ALI	FT/64/13/010	M	9	24-May-13	0	0	Y	Y	Y	N	NSL1	R4
19	FATA	WAZIR-N\$	MIR ALI	FT/64/13/014	F	11	15-June-13	0	0	Y	Y	Y	N	NSL1	R4
20	FATA	KHYBER\$	BARA	FT/34/13/019	F	12	23-June-13	0	0	Y	N	Y	N	NSL1	R4
21	KP	PESHAWAR	PESHAWAR	KP/30/13/042	M	12	30-June-13	0	0	Y	N	Y	Y	NSL1	R4
22	FATA	KHYBER\$	BARA	FT/34/13/020	F	12	03-July-13	0	0	N	N	Y	N	NSL1	

\$ Security compromised area

* Afp.rec Data as of 08-08-2013

Table 1.1: List of Confirmed Polio Cases, Pakistan 2013* (2/2)

S.NO.	PROVINCE/ REGION	DISTRICT	TEHSIL	EPID NO.	SEX	AGE (m)	DATE ONSET OF PARALYSIS	NO. OPV DOSES (based on parents recall)		FEVER	Asymmetric Paralysis	Rapid Progression	REFUSAL	WPV TYPE	GENETICS
								Route	SIA's						Cluster
23	SINDH	KHIGADDAP	GADDAP	SD/63/13/015	F	12	09-July-13	3	6	Y	Y	Y	N	NSL1	
24	FATA	WAZIR-N\$	MIR AN SHAH	FT/64/13/018	F	18	13-July-13	0	0	Y	Y	Y	N	NSL1	

\$ Security compromised area

NEW CASE

* Afp.rec Data as of 08-08-2013

Table 2: LAB Update 2013*

Month of Onset	AFP Cases	No virus isolated	Cases Under Process		Isolated Viruses from stools						
			Culture	ITD	Vaccine viruses		NPEV		Wild	Results within 14 days	
	n	n	n	n	n	%	n	%	n	n	%
January	333	275	0	0	19	6%	37	11%	2	333	100%
February	330	285	0	0	16	5%	26	8%	3	330	100%
March	308	248	0	0	7	2%	52	17%	1	308	100%
April	352	244	0	0	22	6%	84	24%	2	352	100%
May	419	304	0	0	15	4%	91	22%	9	419	100%
June	468	323	2	0	21	4%	118	25%	4	466	100%
July	340	163	70	4	10	3%	90	26%	3	265	78%
August	4	0	4	0	0	0%	0	0%	0	0	0%
Pakistan	2554	1842	76	4	110	4%	498	19%	24	2477	97%

* Data as of 12-08-2013

Table 3: Urgent / ITD Pending Cases

S. #	Basic information									OPV doses				Urgent		Prov Diagnosis	Lab update			Remarks
	District	Tehsil	Union council	Epid number	Date of Onset	Age (M)	Sex	Date of 1st stool	Stool Adeq	Ri	SIA's	Last 6 SIA's	Last dose	By Field	By NSC*		Lab No.	Days inoc	Culture update	
Isolates pending for ITSD																				
1	WAZIR-N	MIR ALI	HAIDER KHEL	FT/64/13/020	20-Jul-13	6	M	25-Jul-13	Y	0	0	0		Y	Y	PCIDJ / IRI NEURITIS	3145	1	SL2	Waiting rRTPCR for VDPV
2	WAZIR-N	MIR ALI	SAIDGAI	FT/64/13/021	22-Jul-13	12	M	26-Jul-13	Y	3	0	0		N	Y	GBS	3179	7	SL2	Waiting rRTPCR for VDPV
3	GHOTKI	GHOTKI	BANDH	SD/42/13/041	20-Jul-13	18	M	23-Jul-13	Y	3	7+	6	17-Jun-13	N	N	HEMIPLEGIA/CVA	3127	7	SL1	Waiting rRTPCR for VDPV
4	KHIGADAP	GADAP	4	SD/63/13/011	03-Jul-13	24	F	19-Jul-13	N	3	5	3	02-May-13	N	N	GBS	3065	5	P2	Discordant U
Reported urgent (by field / NSC* criteria)																				
5	FR BANNU	FR BANNU	HINDI KHEL	FT/69/13/004	21-Jul-13	10	M	02-Aug-13	Y	0	0	0		Y	Y	PCIDJ / GBS	3301	1	UP	
6	FR BANNU	FR BANNU	HINDI KHEL	FT/69/13/006	27-Jul-13	18	M	05-Aug-13	Y	0	7+	3	10-Apr-13	Y	N	PCIDJ / GBS	3303	1	UP	
7	WAZIR-N	MIR ALI	KHUSHALI	FT/64/13/023	31-Jul-13	12	M	03-Aug-13	Y	0	0	0		Y	Y	PCIDJ / GBS	3302	1	UP	
8	PESHAWAR	PESHAWAR	MERA SUREZAI	KP/30/13/053	26-Jul-13	5	M	31-Jul-13	Y	2	3	3	18-Apr-13	N	Y	IRI NEURITIS	3239	10	UP	
9	MULTAN	JALALPUR PIRWALA	ALI PUR SADAAT	PB/61/13/059	30-Jul-13	4	M	02-Aug-13	Y	2	2	2	11-Jun-13	N	Y	CELLULITIS	3271	6	UP	

* New L20B+ U Pending for genomic sequencing #Data not available Y NSC Criteria = Fever, Rapid Progress, Age < 48 months and OPV Doses < 7 UP = Under process
 Urgent (Field/NSC) / Inadequate specimens / Age 12-35 months / Zero OPV dose

* Data as of 12-08-2013

Summary of Laboratory data for Environmental Surveillance- Pakistan (Jan 2011 to date)

Report for Epidemiological week= 31 (28 Jul– 03 Aug, 2013)

Site	Total Samples	2011	2012	Epidemiological Weeks																																																				
				2011	2012	2013	1-52																																																	
Punjab	239	51	30	2																																																				
LAHORE																																																								
1 LHR-Gulshan Razi Station	31	3	5																																																					
2 LHR-Multan Road Station	31	7	6																																																					
3 LHR-Orfali Pump Station	31	7	7																																																					
MULTAN																																																								
4 Multan-Sunaj Miani, SM-1	31	9	1																																																					
5 Multan-Ali Town, AT-1	31	6	2																																																					
6 Multan-Kotla A. Fateh, KF-1	31	6	1																																																					
KAWALPINDI																																																								
7 KWP-Subzalabad, SA-1	31	11	7	1																																																				
FASALABAD																																																								
8 COMPOSITE SITE, Pump Station	11	0	1	1																																																				
9 Ismail City Road	11	0	0																																																					
Sindh	230	46	34	11																																																				
GULSHAN-E IQBAL																																																								
10 KHI-GI-Chakora Nulla	31	6	8																																																					
11 KHI-GI-Rasool Mehru Rd	31	8	1																																																					
GADAP																																																								
12 KHI-Gadap-Composite site	31	11	6	3																																																				
13 KHI-Gadap-Sohrab Goth	31	10	2																																																					
BALDIA																																																								
14 KHI-Baldia-Sujan Goth	31	4																																																						
15 KHI-Baldia-Composite	31	7	1																																																					
SUKKUR																																																								
16 SUK-Miani P. Station-Sukkur city	18	4																																																						
17 SUK-Matika P. Station-N. Sukkur	15	3																																																						
HYDERABAD																																																								
18 HYD-Tulsidas P. Station	13	6	6																																																					
Khyber Pakhtunkhwa	62	29	20	10																																																				
PESHAWAR																																																								
19 PWR-Shahen Town, ST-1	31	11	11	7																																																				
20 PWR-Lara Ma, LM-1	31	8	9	3																																																				
Balochistan																																																								
QUETTA																																																								
21 Quetta-Jattak KRI, JT-1	30	11	2																																																					
22 Quetta-Jam-e-Safia, JS-1	31	9	2																																																					
23 Quetta-Surpud, SP-1	11		1																																																					
Pakistan	603	136	88	24																																																				

- Wild poliovirus type 1 (WPV1)
- Wild poliovirus type 3 (WPV3)
- ■ Mixture WPV1 & WPV3
- No WPV Isolated
- Under process
- X Scheduled sampling, sample not collected
- No sampling scheduled
- Mixture WPV1 & VDPV type 2

SUMMARY

Total Sites = 23

Total Samples Collected (2011-2012-2013) = 603

Total Samples with results available = 591

Total samples positive for Wild PV (2011-2012-2013) = **248** (136+88+24) (WPV1= 248)

Samples Positive for VDPV= 1 (Type 2 VDPV from KHI-Gadaap)

Comparison environmental sampling results 2012-13*

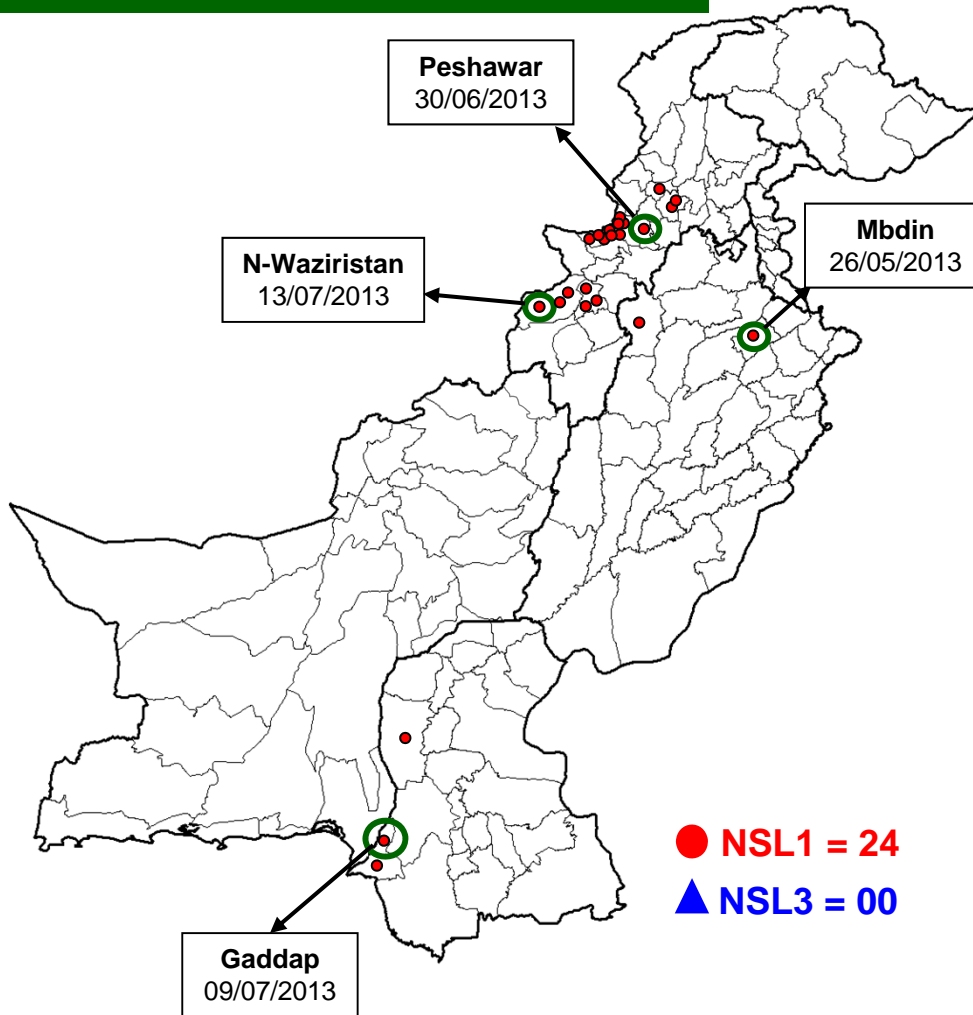
District/ Town	2012			2013*			Last Isolate
	Total	Wild		Total	Wild		
Lahore	20	13	65%	20	0	0%	20-Nov-12
Multan	19	4	21%	19	0	0%	18-Jun-12
Rawalpindi	6	4	67%	6	1	17%	25-Mar-13
Faisalabad	Sampling started week 36			13	1	8%	03-Jan-13
G IQbal	13	1	8%	13	0	0%	04-Oct-12
Gadap	13	7	54%	13	5	38%	08-July-13
Baldia	13	1	8%	13	0	0%	10-Jul-12
Sukkur	6	5	83%	13	0	0%	05-Sep-12
Hyderabad	1	1	100%	7	6	86%	10-Jul-13
Peshawar	13	10	77%	13	10	77%	10-Jul-13
Quetta	13	2	15%	18	1	6%	20-Feb-13
Total	117	48	41%	148	24	16%	10-Jul-13

* Comparison of samples till week 28 of both years with available results

Data source Polio RRL

Map1: Distribution of Wild Polio cases Pakistan 2013*

Districts/ Towns with Wild Polio cases = 12



● NSL1 = 24

▲ NSL3 = 00

○ District with last polio case in province

Cases randomly placed in districts

— Provincial Boundary
— Districts Boundary

* Afp.rec Data as of 08-08-2013

Province/ Country	Date of Last Case		Number of cases 2013	
	P1	P3	P1	P3
PUNJAB	May, 2013	Jun, 2010	2	-
SINDH	July, 2013	Jan, 2010	3	-
KHYBER- PAKHTUNKHWA	Apr, 2013	Oct, 2010	5	-
FATA	July, 2013	Apr, 2012	14	-
BALUCHISTAN	Oct, 2012	Apr, 2010	-	-
AJK	-	Jun, 2000	-	-
GILGIT-BALTISTAN	Aug, 2012	-	-	-
ISLAMABAD	Sep, 2008	Sep, 2008	-	-
PAKISTAN	July, 2013	Apr, 2012	24	-

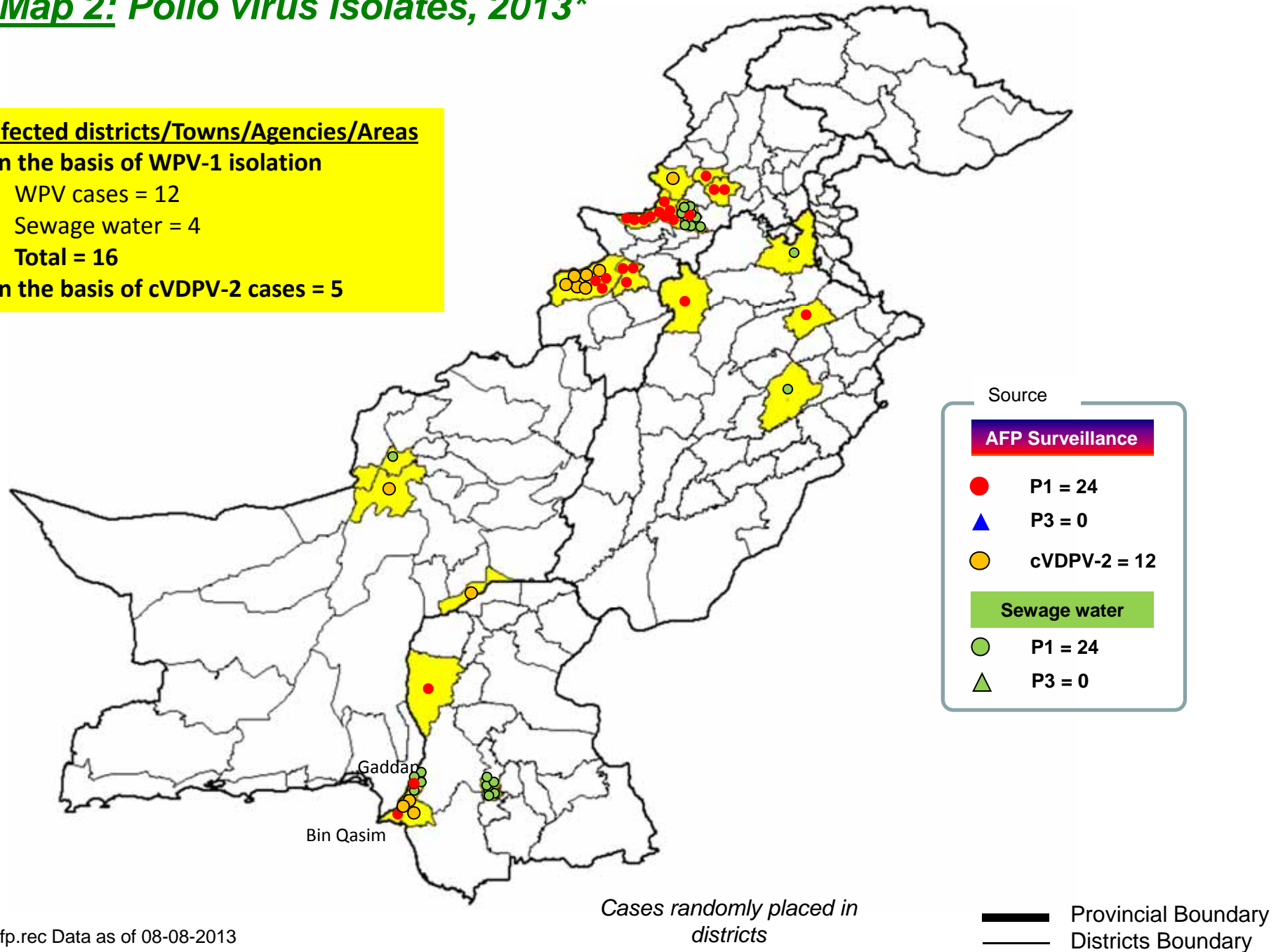
Map 2: Polio virus isolates, 2013*

Infected districts/Towns/Agencies/Areas

On the basis of WPV-1 isolation

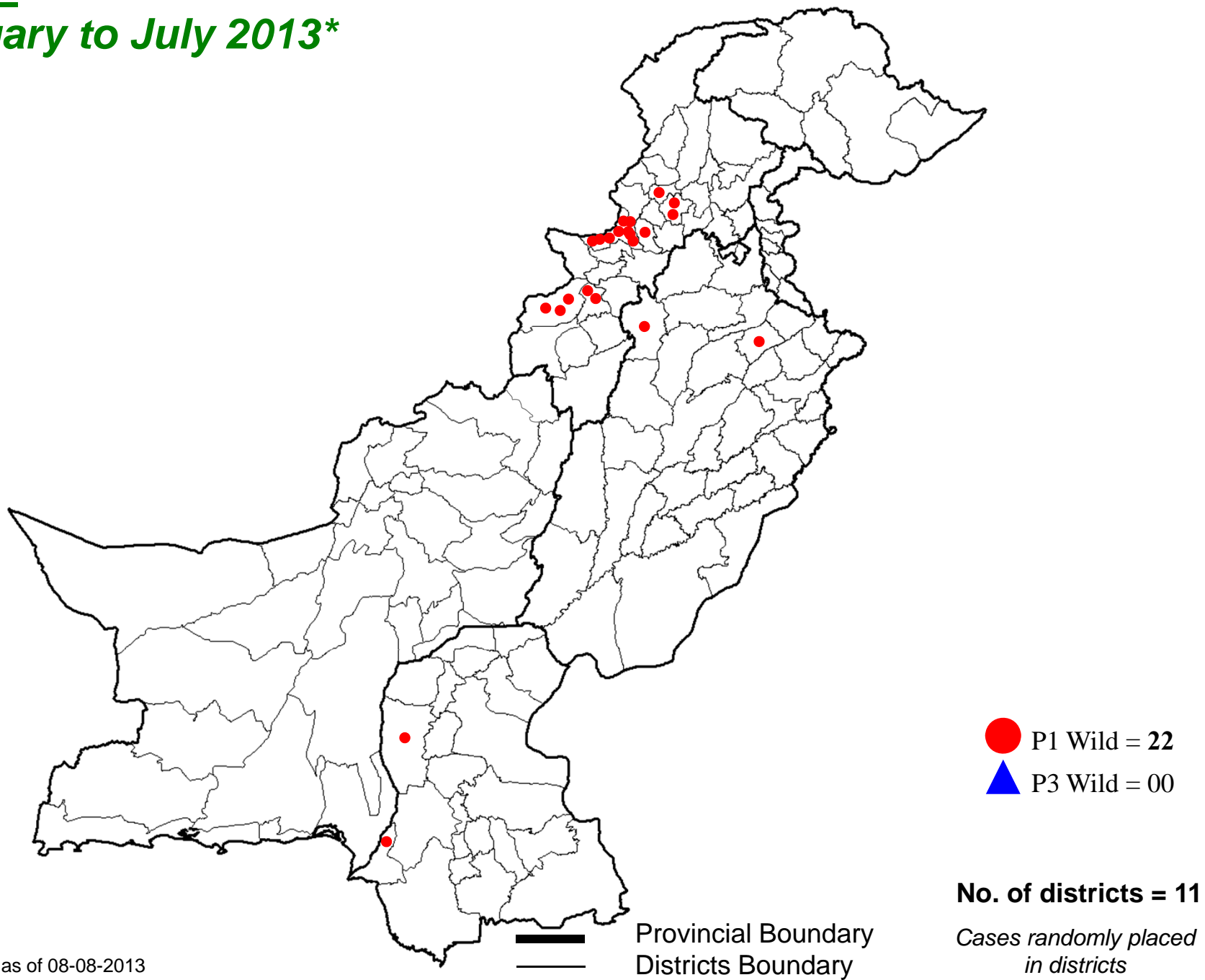
- WPV cases = 12
- Sewage water = 4
- Total = 16

On the basis of cVDPV-2 cases = 5



* Afp.rec Data as of 08-08-2013

Map 3: Wild Polio cases in the last 6 months from February to July 2013*



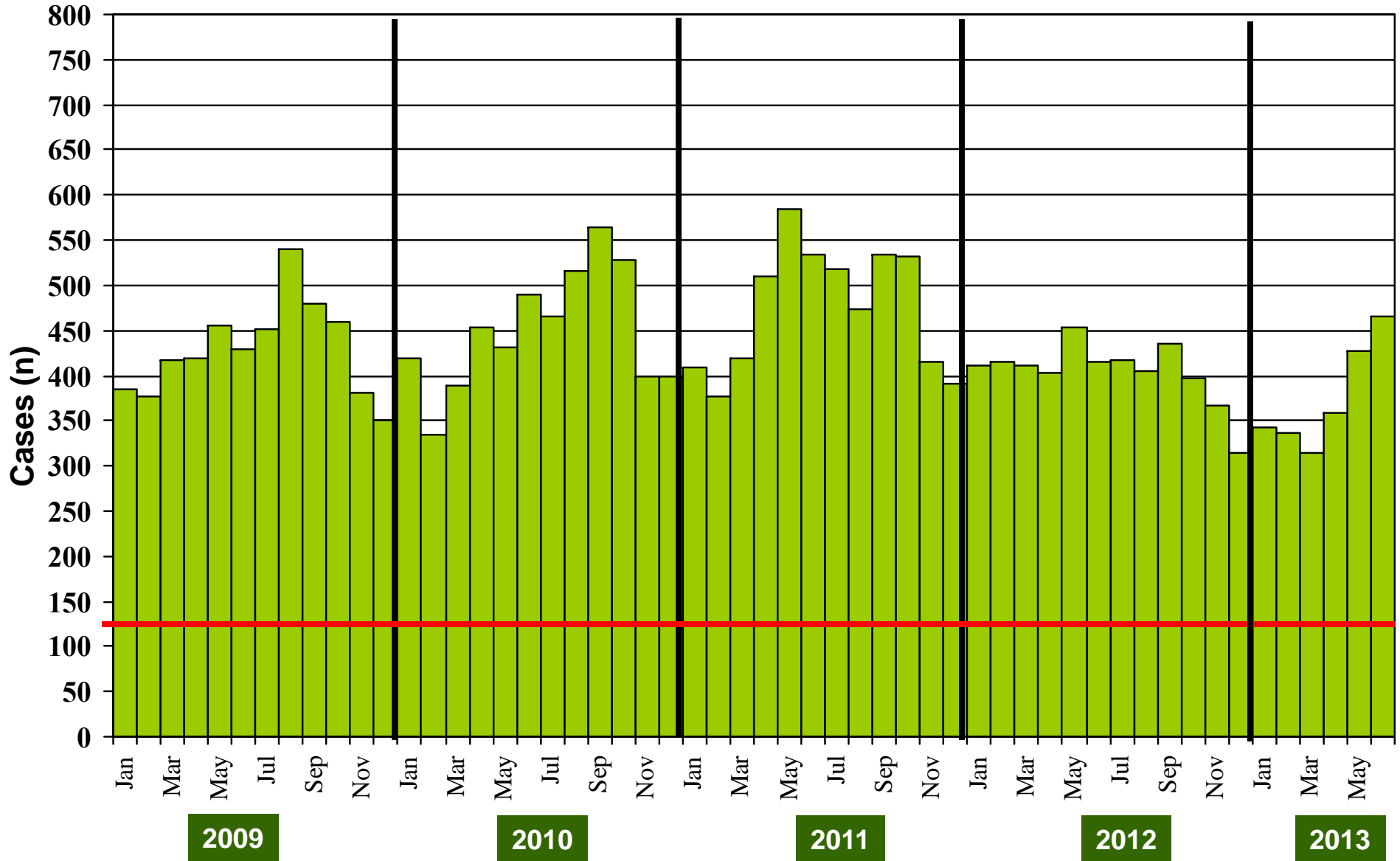
**Table 4: Distribution of AFP Cases By Week of Onset ^
Pakistan 2013* [Week number/Ending on]**

PROVINCE	W 17 27 Apr 2013	W 18 04 May 2013	W 19 11 May 2013	W 20 18 May 2013	W 21 25 May 2013	W 22 01 June 2013	W 23 08 June 2013	W 24 15 June 2013	W 25 22 June 2013	W 26 29 June 2013	W 27 06 July 2013	W 28 13 July 2013	W 29 20 July 2013	W 30 27 July 2013	W 31 03 Aug 2013
PUNJAB	47	50	45	53	56	45	63	61	47	40	44	44	45	32	16
SINDH	16	17	22	21	21	23	21	13	27	18	20	21	13	13	5
KP	10	16	15	9	12	36	21	21	14	11	16	19	15	14	3
FATA	6	2	7	7	5	2	6	6	1	4	7	5	2	5	1
BALUCHISTAN	1	1	1	7	7	6	7	4	8	5	3	2	5	2	1
AJK	0	2	0	2	0	1	2	1	2	1	2	0	1	2	0
GILGIT BILTISTAN	0	1	0	0	0	0	0	0	0	0	1	0	0	0	0
ISLAMABAD	1	0	2	0	2	0	2	0	0	0	1	0	0	1	0
PAKISTAN	81	89	92	99	103	113	122	106	99	79	94	91	81	69	26

* Afp.rec & Afplab.rec: Data as of 08-08-2013

^ MMWR Epidemiological Weeks

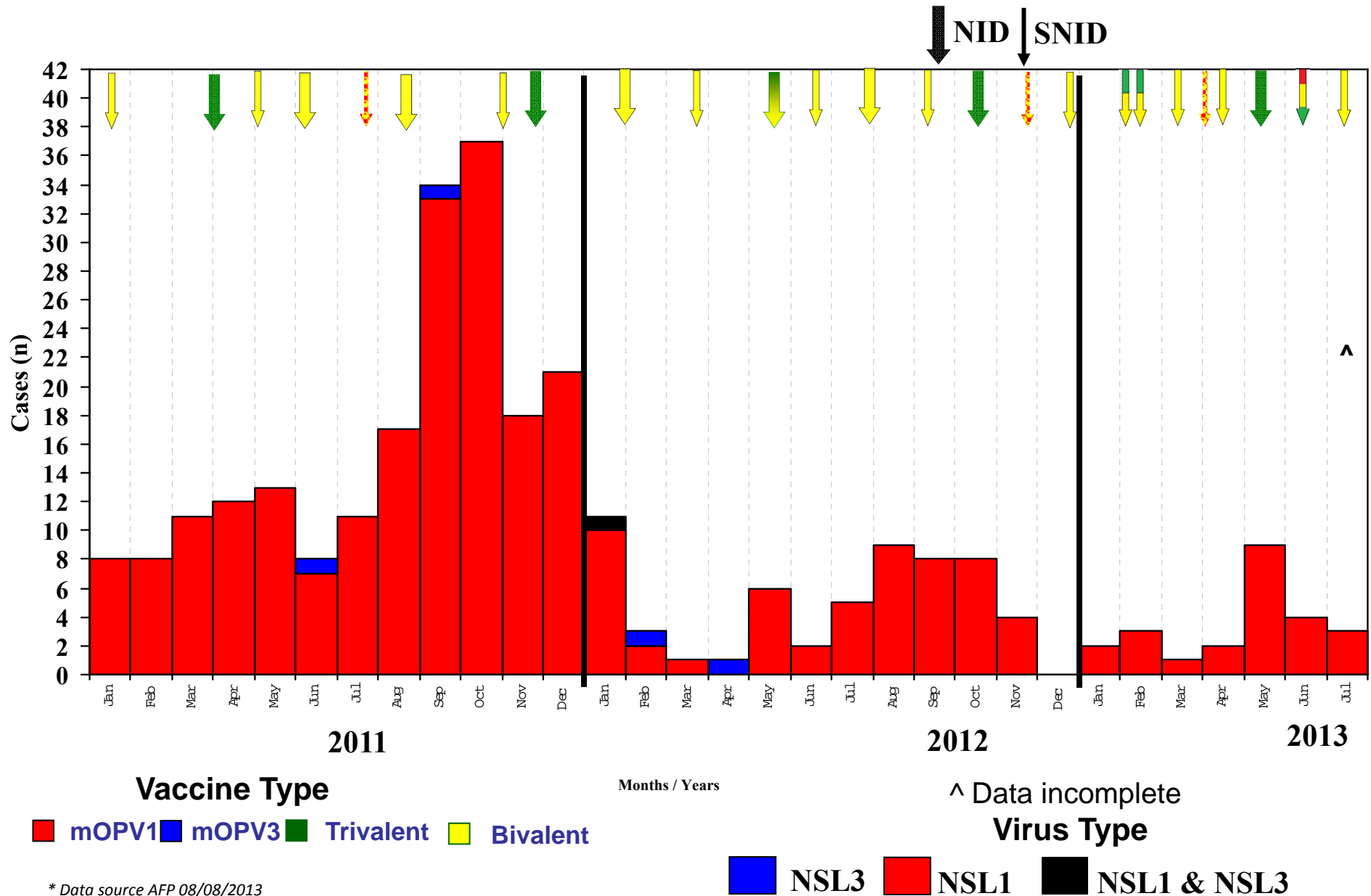
Graph 1: Distribution of AFP Cases by Month, Pakistan 2009-2013*



@ Non-polio AFP rate of 2/100,000 children < 15 years

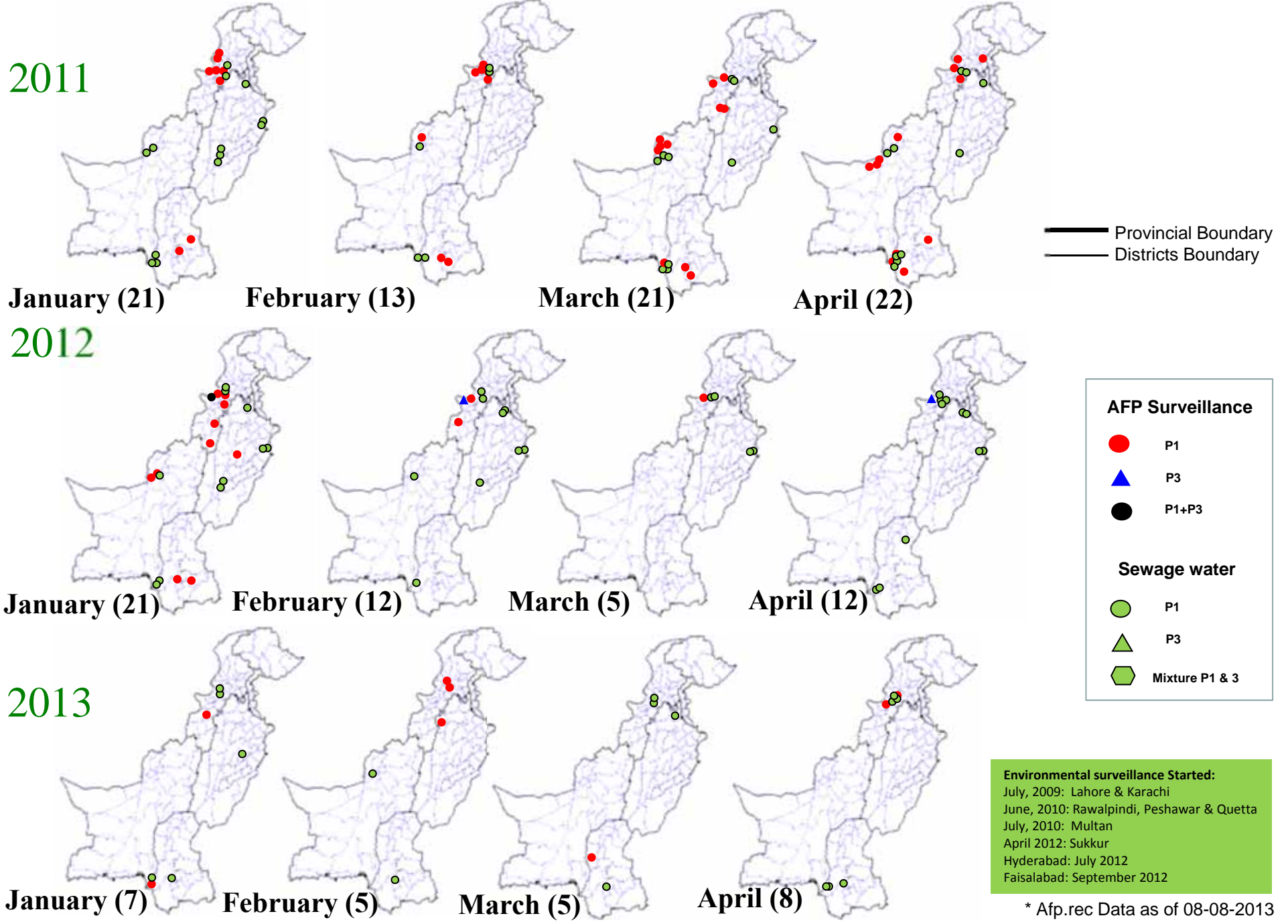
*Afp.rec Data as of 08-08-2013

Confirmed Polio Cases By Poliovirus Type, 2011-2013*



* Data source AFP 08/08/2013

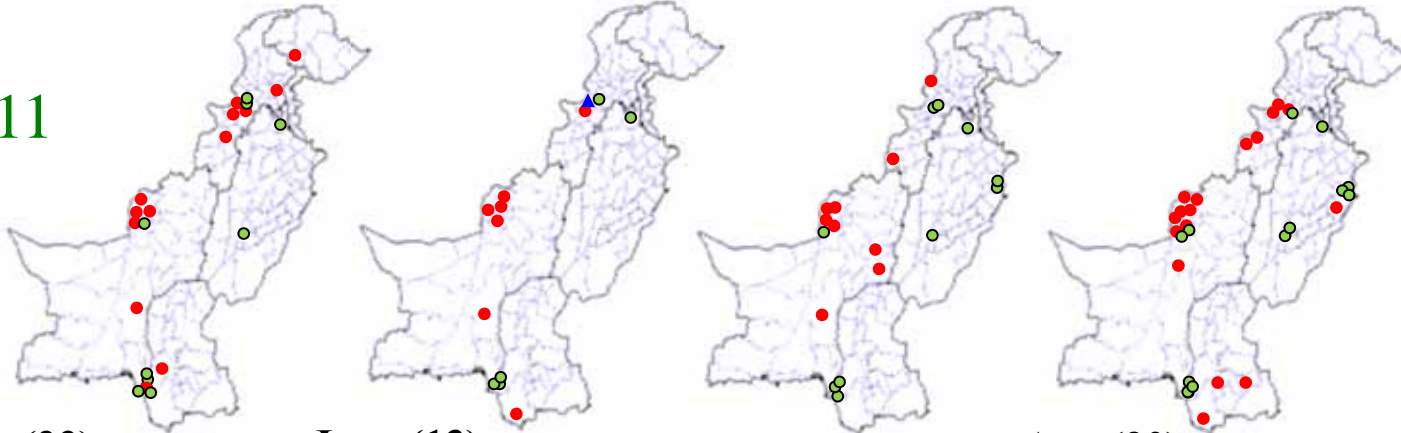
Map 4: Monthly Comparison of P1 & P3 Polio Cases/Isolates 2011-2013*



* Afp.rec Data as of 08-08-2013

Map 4.1: Monthly Comparison of P1 & P3 Polio Cases/Isolates 2011-2013*

2011



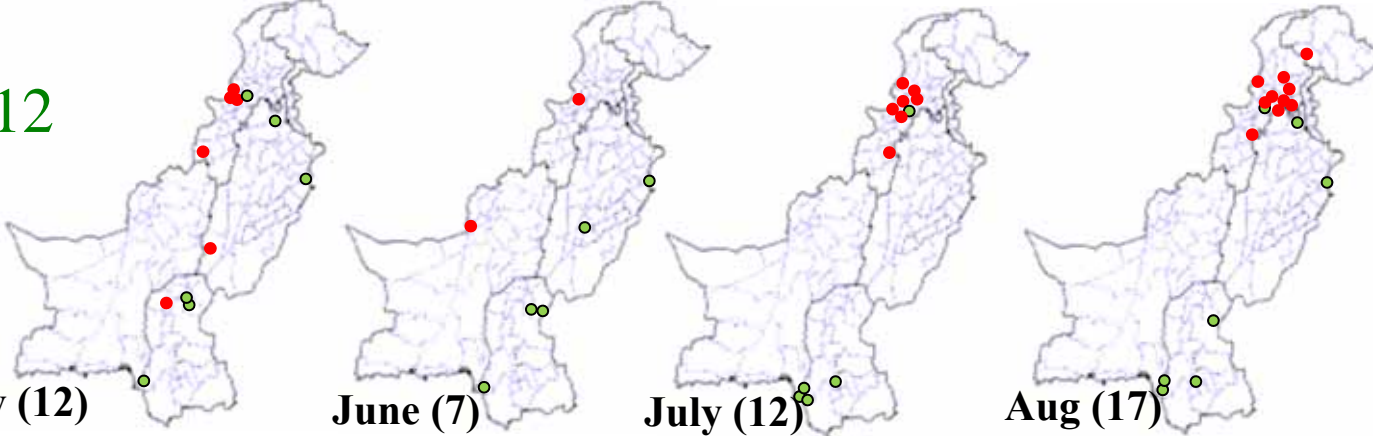
May (22)

June (13)

July (19)

Aug (30)

2012



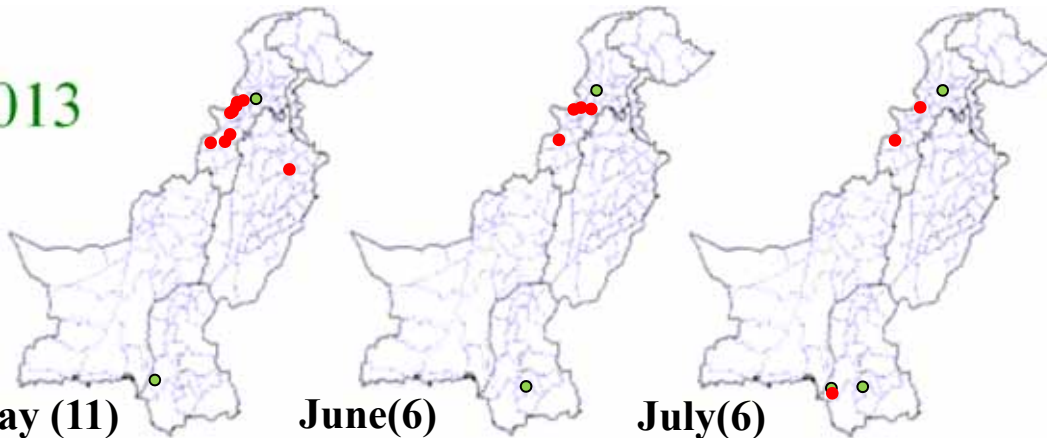
May (12)

June (7)

July (12)

Aug (17)

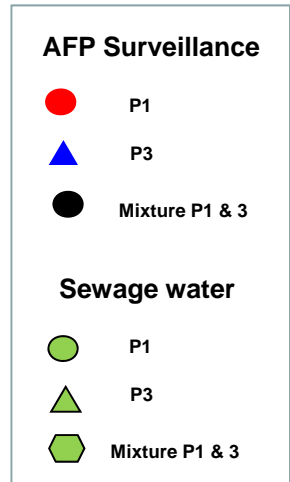
2013



May (11)

June(6)

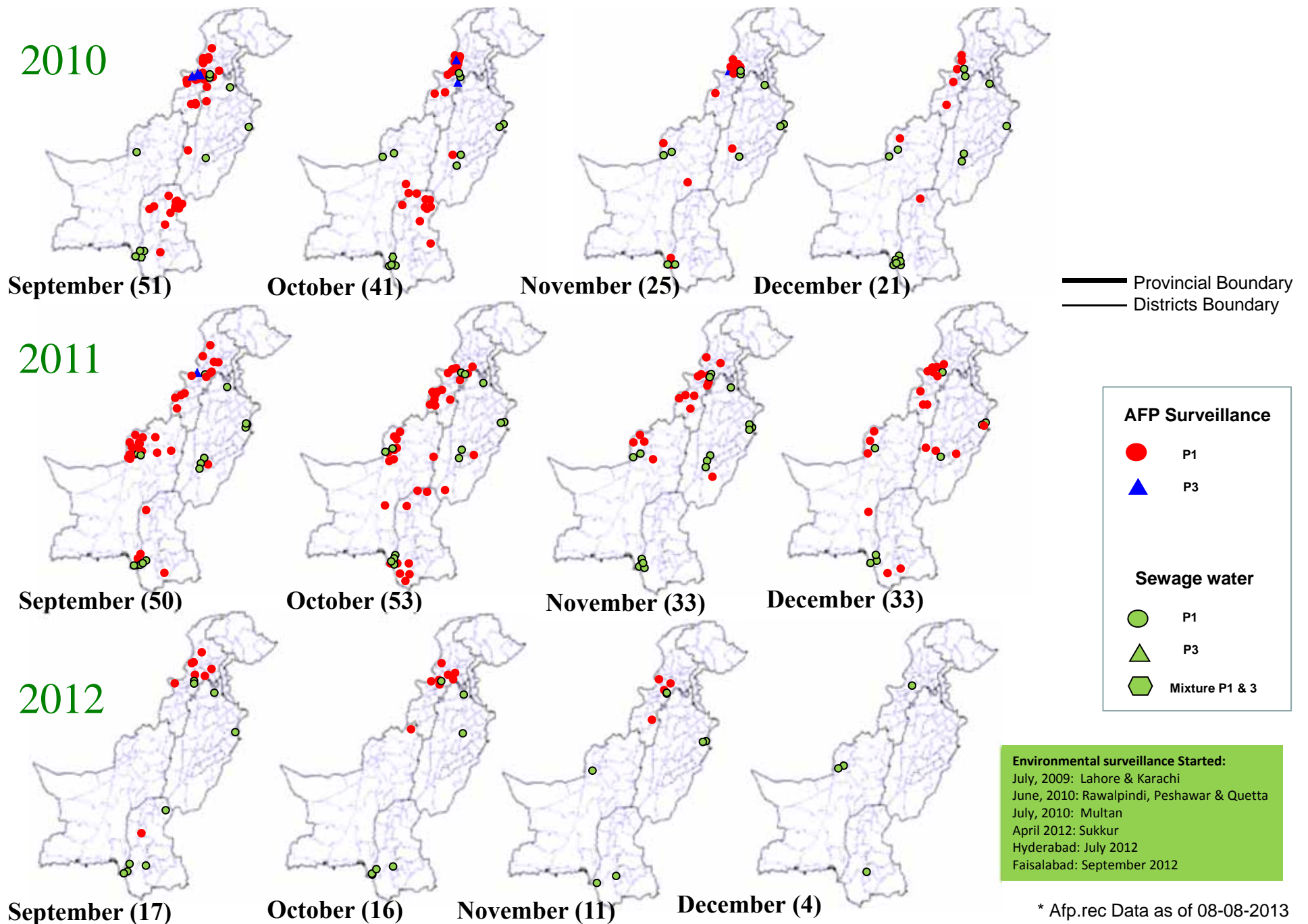
July(6)



Environmental surveillance Started:
 July, 2009: Lahore & Karachi
 June, 2010: Rawalpindi, Peshawar & Quetta
 July, 2010: Multan
 April 2012: Sukkur
 Hyderabad: July 2012
 Faisalabad: September 2012

* Afp.rec Data as of 08-08-2013

Map 4.2: Monthly Comparison of P1 & P3 Polio Cases/Isolates 2010-2012*

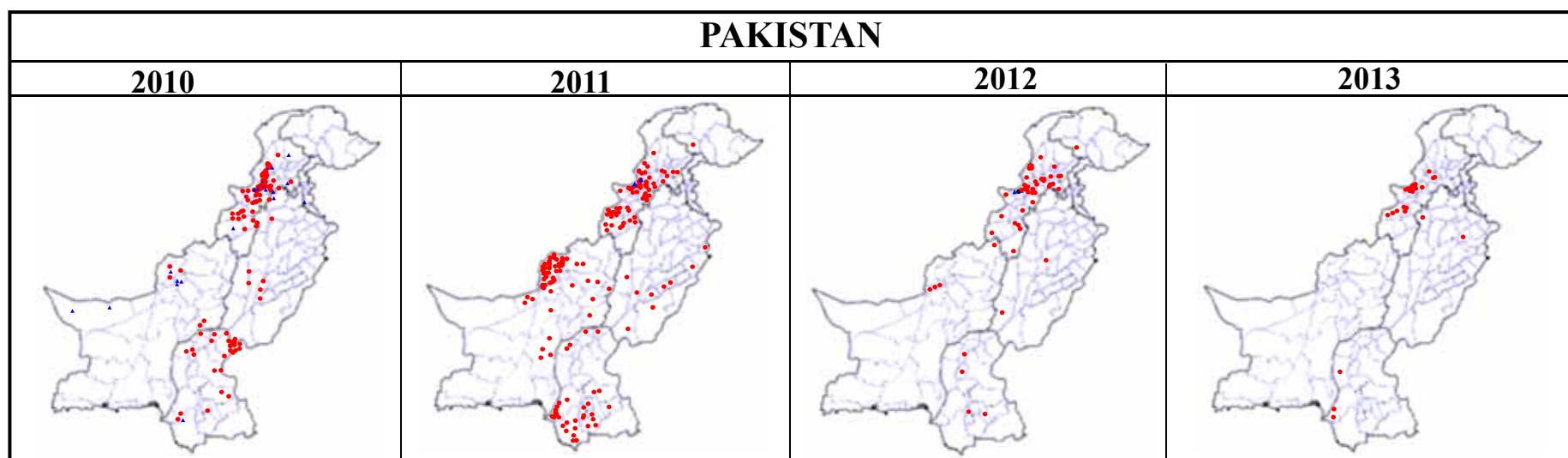


* Afp.rec Data as of 08-08-2013

Table 5: Polio Eradication Update, Pakistan 2010-2013*

Province/Region	Polio 1				Polio 3				Total Wild			
	2010	2011	2012	2013	2010	2011	2012	2013	2010	2011	2012	2013
PUNJAB	6	9	2	2	1	0	-	-	7	9	2	2
SINDH	26	33	4	3	1	0	-	-	27	33	4	3
KP	19	23	27	5	5	0	-	-	24	23	27	5
FATA^	63	57	17	14	11	2	2	-	74	59	20^	14
BALUCHISTAN	6	73	4	-	6	0	-	-	12	73	4	-
AJK	0	0	-	-	0	0	-	-	0	0	-	-
Gilgit-Baltistan	0	1	1	-	0	0	-	-	0	1	1	-
ISLAMABAD	0	0	-	-	0	0	-	-	0	0	-	-
PAKISTAN	120	196	55	24	24	2	2	-	144	198	58	24

^ FATA reported mixture of NSL1 & NSL3



* Afp.rec Data as of 08-08-2013

Table 6: Vaccination status of non polio AFP cases age 6-59 months 2010-2013*

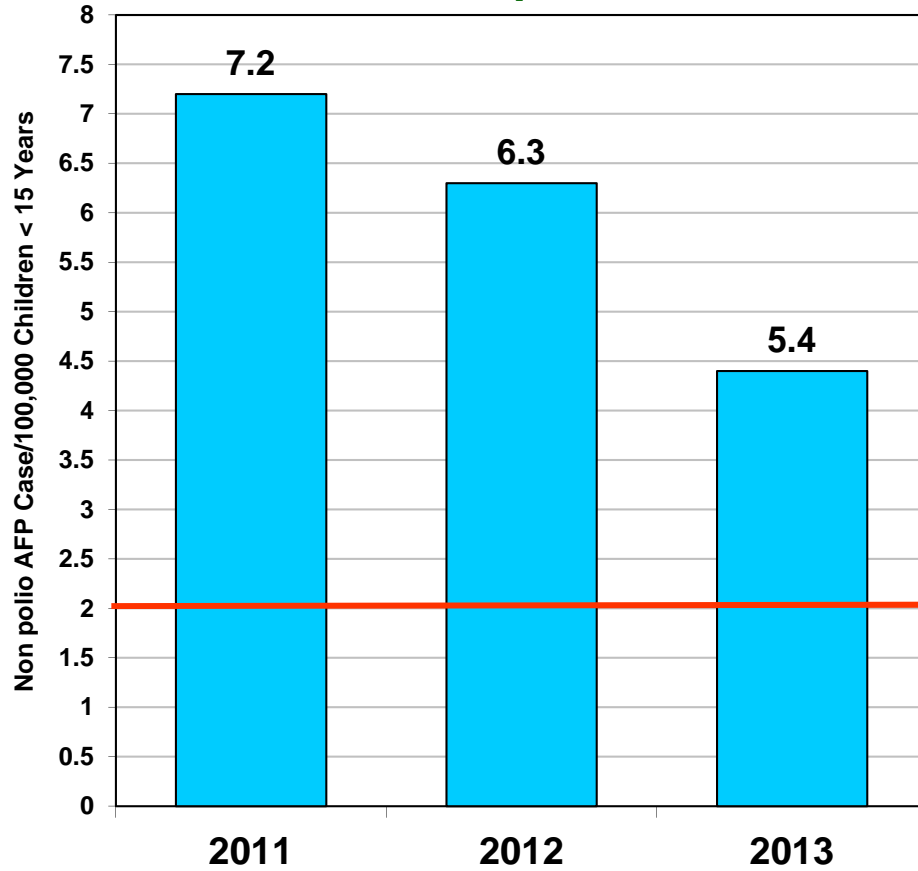
REGION	0 dose				1-2 doses				3 doses				4-6 doses				7+ doses			
	10	11	12	13	10	11	12	13	10	11	12	13	10	11	12	13	10	11	12	13
Central Punjab	0%	0%	0%	0%	1%	1%	0%	1%	1%	2%	0%	1%	7%	6%	4%	9%	91%	92%	95%	89%
North Punjab	0%	0%	0%	0%	0%	1%	0%	0%	2%	1%	0%	0%	6%	5%	4%	5%	91%	93%	96%	95%
South Punjab	0%	0%	0%	0%	1%	0%	0%	0%	0%	1%	0%	0%	5%	5%	4%	6%	94%	93%	96%	94%
PUNJAB	0%	0%	0%	0%	1%	1%	0%	0%	1%	1%	0%	0%	6%	5%	4%	7%	92%	93%	96%	92%
Karachi	2%	4%	1%	0%	0%	1%	1%	4%	3%	0%	2%	0%	7%	6%	6%	6%	88%	88%	90%	90%
North Sindh	0%	0%	0%	0%	1%	1%	0%	0%	0%	0%	1%	0%	4%	5%	4%	5%	95%	94%	94%	95%
South Sindh	0%	1%	0%	0%	1%	1%	1%	1%	1%	0%	2%	1%	9%	6%	4%	9%	89%	93%	93%	90%
SINDH	1%	1%	0%	0%	1%	1%	1%	1%	1%	0%	1%	0%	7%	6%	4%	7%	91%	92%	93%	92%
Central Khyber Pakhtunkhwa	1%	1%	2%	1%	0%	1%	1%	1%	1%	0%	0%	1%	2%	3%	2%	1%	97%	95%	95%	97%
North Khyber Pakhtunkhwa	2%	1%	2%	0%	1%	2%	2%	1%	2%	1%	2%	1%	6%	7%	9%	6%	89%	90%	85%	92%
South Khyber Pakhtunkhwa	3%	2%	2%	0%	3%	4%	1%	0%	3%	4%	1%	0%	14%	7%	9%	3%	76%	83%	87%	97%
Khyber Pakhtunkhwa	1%	1%	2%	1%	1%	2%	1%	1%	2%	1%	1%	1%	6%	5%	6%	3%	90%	91%	89%	95%
FATA	14%	14%	18%	26%	11%	10%	6%	2%	6%	5%	3%	8%	18%	11%	12%	4%	51%	61%	62%	58%
North Balochistan	12%	4%	12%	18%	0%	12%	10%	12%	4%	23%	3%	0%	12%	12%	17%	18%	72%	50%	57%	53%
Quetta Block	0%	31%	14%	13%	11%	10%	10%	8%	0%	3%	0%	0%	9%	14%	14%	13%	81%	43%	62%	67%
Rest of Balochistan	6%	7%	9%	5%	2%	2%	6%	5%	2%	5%	5%	5%	11%	10%	10%	23%	78%	76%	70%	64%
BALUCHISTAN	5%	16%	8%	10%	4%	6%	8%	7%	2%	6%	3%	3%	11%	12%	17%	16%	78%	60%	64%	63%
PAKISTAN	1%	2%	1%	1%	1%	1%	1%	1%	1%	1%	1%	1%	7%	6%	5%	6%	89%	89%	92%	90%

* Afp.rec Data as of 08-08-2013

Key Surveillance Indicators; 2011-2013*

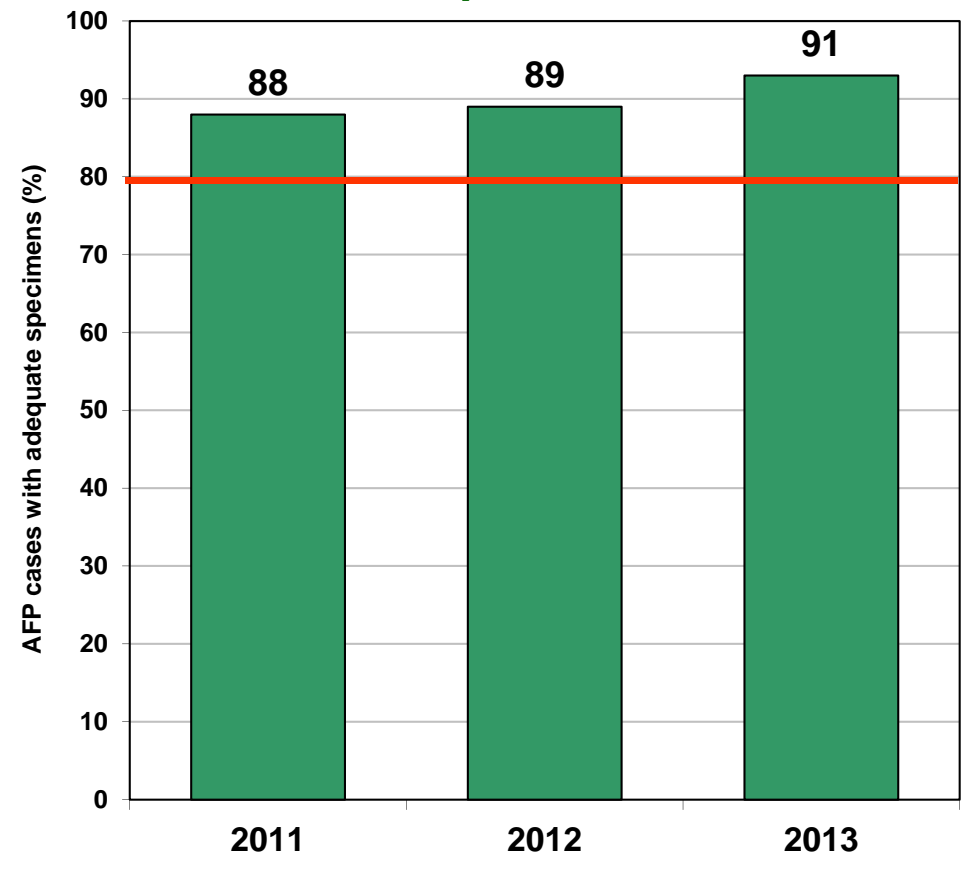
(Non polio AFP rate and % AFP cases with adequate specimens)

Graph 3



■ Non Polio AFP Rate

Graph 4



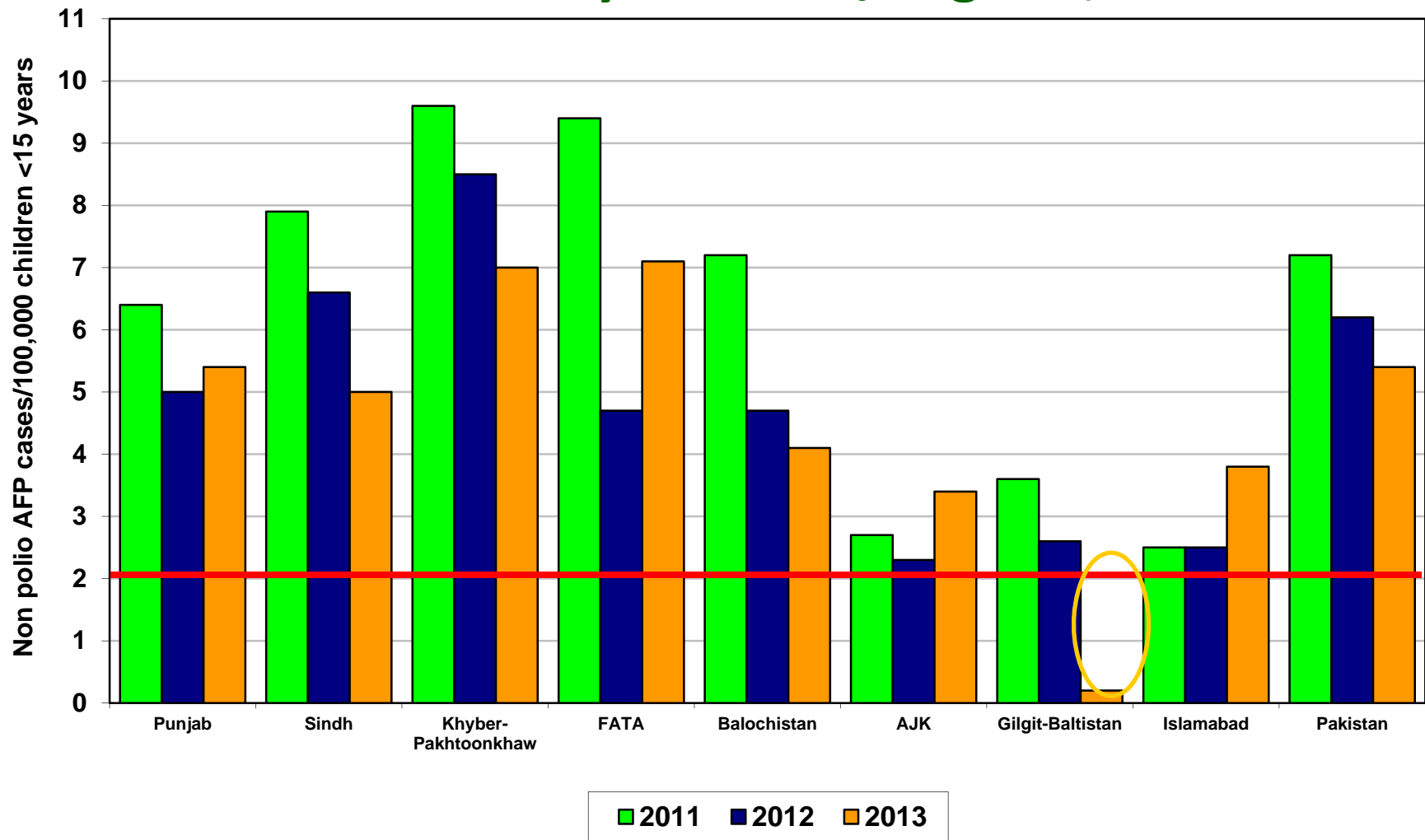
■ % AFP with Adequate Specimens

— Target

Non Polio AFP rate Up to Week No. 31 ended on 03rd July, 2013

* Afp.rec Data as of 08-08-2013

Non Polio AFP Rate By Province/Regions, 2011-2013*

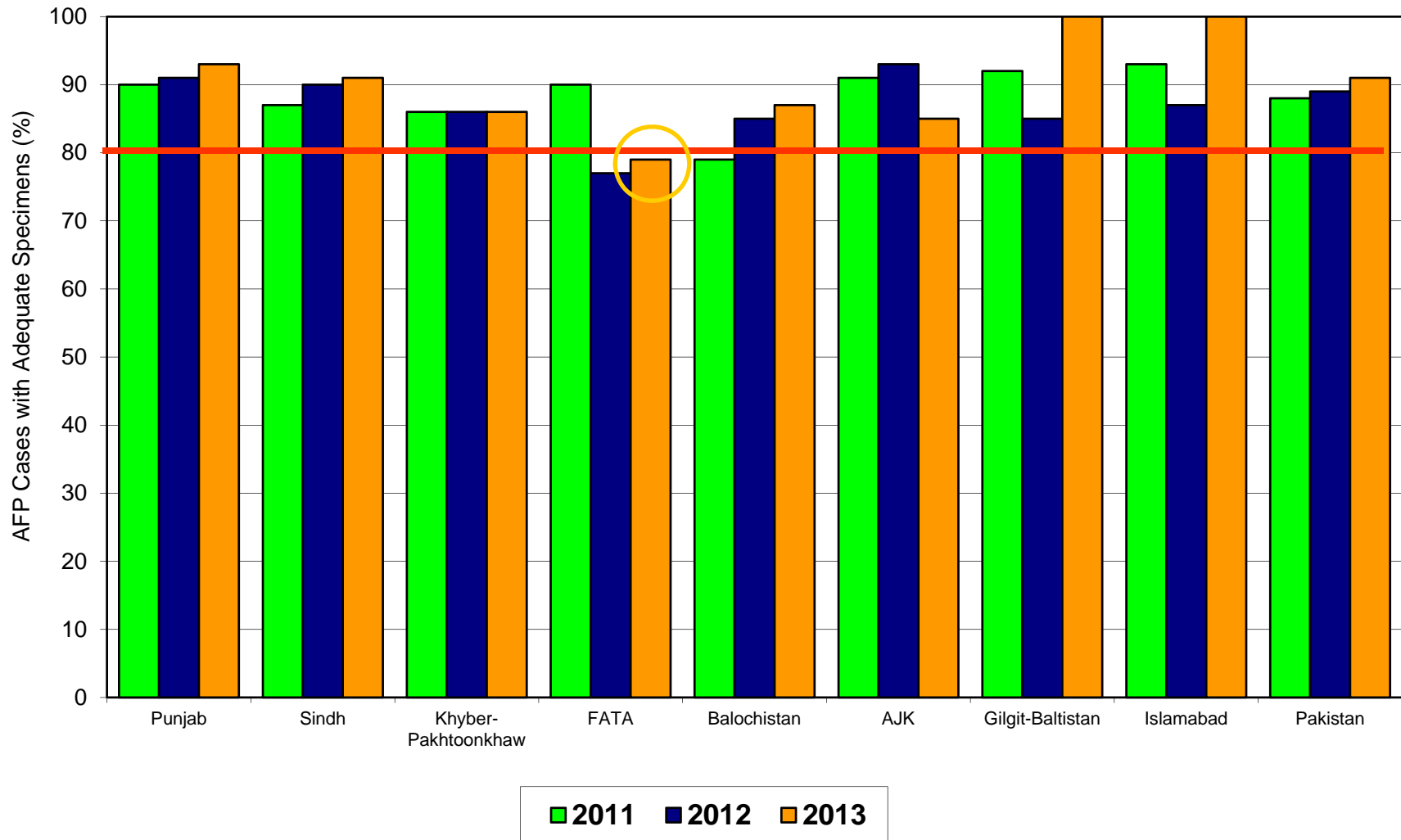


Non Polio AFP rate Up to Week No. 31 ended on 03rd July, 2013

Target Non-Polio AFP Rate 2/ 100000 < 15 years of the age

* Data source AFP 08/08/2013

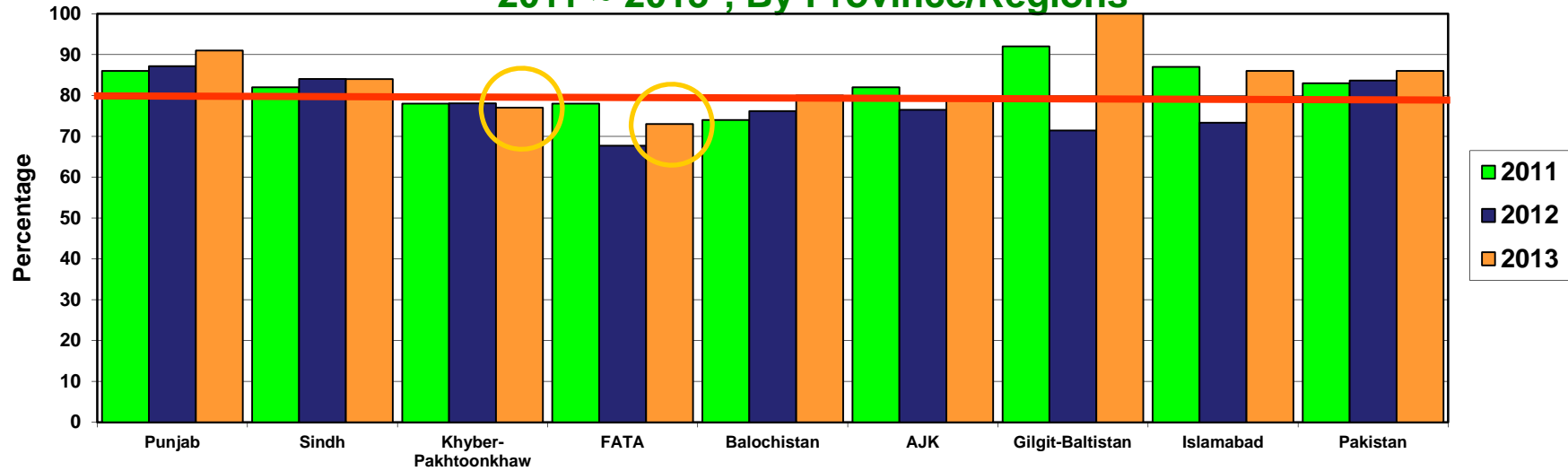
Percent AFP Cases with Adequate Specimens By Province/Regions, 2011-2013*



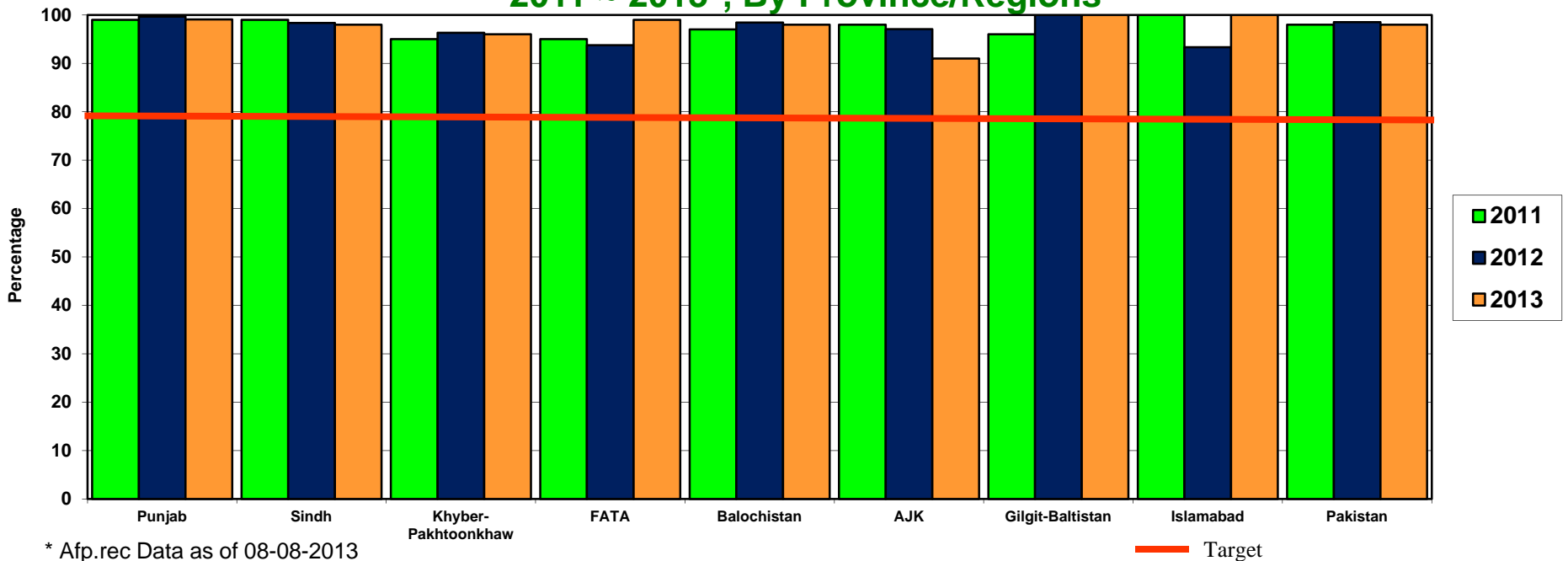
* Data source AFP 08/08/2013

Target Adequate Sample cases = 80%

**Graph 5: Percent AFP Cases Notified within 07 days of paralysis onset
2011 ~ 2013*, By Province/Regions**



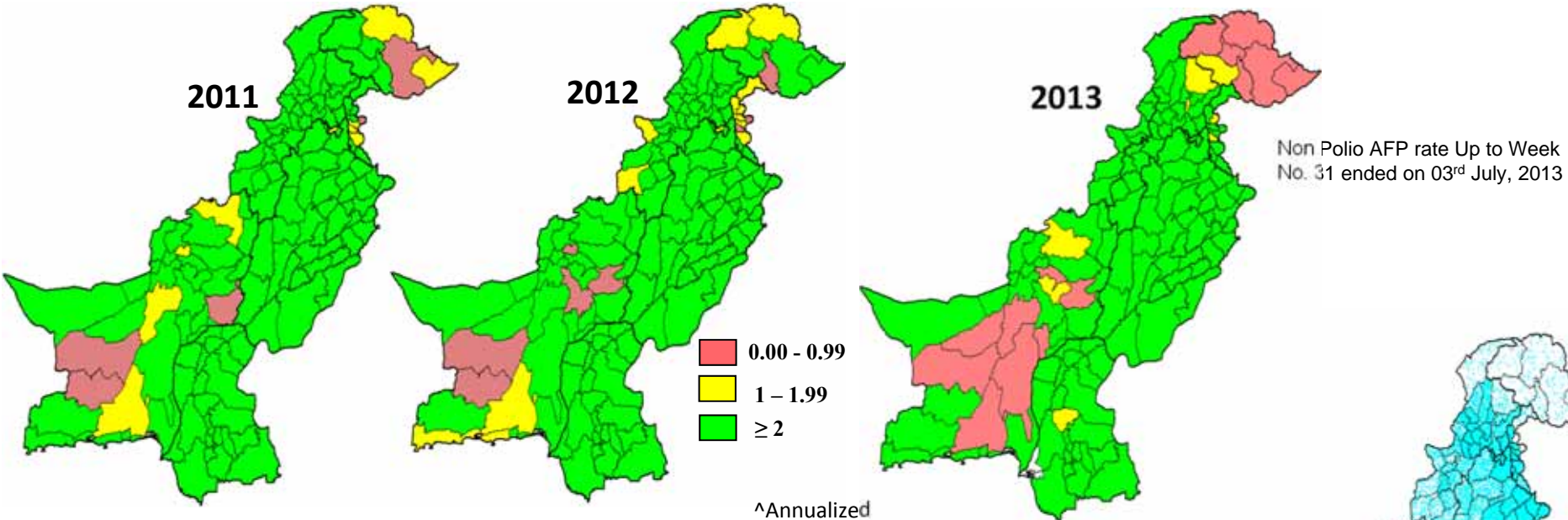
**Graph 6: Percent AFP Cases Investigated within 48 hours of notification
2011 ~ 2013*, By Province/Regions**



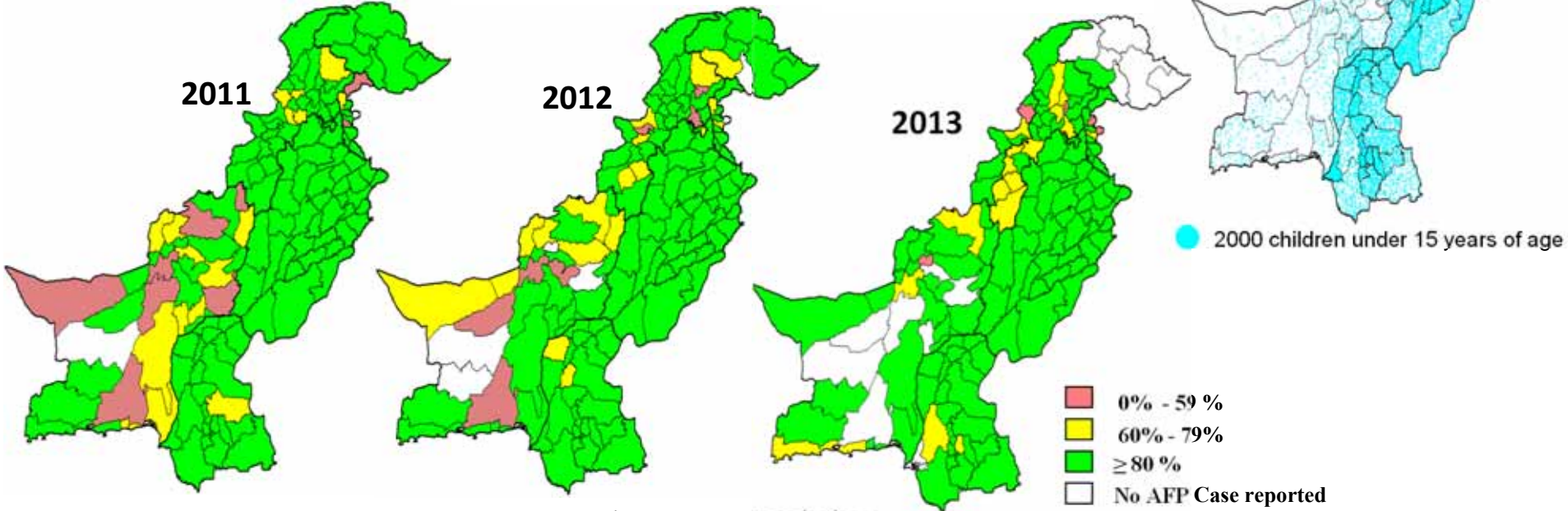
* Afp.rec Data as of 08-08-2013

— Target

Non-Polio^ AFP Rate by District



Percent AFP Cases with Adequate Specimens, by District



* Data source AFP 08/08/2013

Table 7: AFP CASES PENDING FOR CLASSIFICATION WITH DATE OF ONSET MORE THAN 90 DAYS* 2013 (1/2)

S. No	DISTRICT	TEHSIL	EPID	SEX	AGE	DONSET	DOSE€	DSTOOL1	DSTOOL2	LAB	FEVER	ASVM	PROG	FUP	PEND (DAYS)	
1	KARAK	KARAK	KP/51/13/005	F	13	01/01/13	7+	20130215	20130217	EV	N	Y	Y	Y	218	
2	KHYBER	LANDI KOTAL	FT/34/13/003	M	84	02/10/13	7+	20130225	20130227	NVI	Y	N	Y		178	
3	KHYBER	JAMRUD	FT/34/13/004	F	16	20130122	7+	03/05/13	03/06/13	EV	Y	Y	Y		197	
4	MARDAN	MARDAN	KP/40/13/007	M	29	20130117	7+	02/06/13	02/07/13	EV	Y	Y	Y	Y	202	
5	PESHAWAR	PESHAWAR	KP/30/13/008	M	96	20130115	7+	20130226	20130227	NVI	N	N	Y	Y	204	
6	SWAT	SWAT	KP/24/13/004	M	120	20130220	7+	Child Died Before Stool Collection			Y	N	Y	DIED	168	
7	WAZIR-N	MIRAN SHAH	FT/64/13/001	M	96	02/08/13	6	20130213		NVI	Y	N	Y	DIED	180	
8	FAISALABAD	JARANWALA	PB/51/13/045	F	10	03/01/13	1	Late Notified			N	Y	Y	Y	159	
9	MUZFARGARH	ALIPUR	PB/83/13/057	M	30	20130425	7+				Y	Y	Y	Y	Y	104
10	MUZFARGARH	ALIPUR	PB/83/13/054	M	30	20130425	7+				Y	Y	Y	Y	Y	104
11	HYDERABAD	HYDERABAD RURAL	SD/21/13/006	M	84	04/01/13	7+	Child Died Before Stool Collection			Y	N	Y	DIED	128	
12	JAMSHORO	T.B.KHAN	SD/25/13/009	F	18	05/03/13	7+	20130525	06/12/13	NVI	N	N	Y	Y	96	
13	KAMBAR	WARAH	SD/55/13/006	M	96	01/01/13	7+	Late Notified			N	Y	Y	Y	218	
14	KHIJAMSHEED	JAMSHEED	SD/66/13/004	F	60	05/01/13	7+	Child Died Before Stool Collection			Y	N	Y	DIED	98	
15	KHISADDAR	SADDAR	SD/77/13/004	F	38	04/05/13	7+	05/10/13	05/11/13	NVI	N	N	Y	Y	124	
16	NFEROZ	BHIRIA	SD/45/13/003	F	144	02/05/13	7+	Child Died Before Stool Collection			Y	Y	Y	DIED	183	
17	SANGHAR	KHIPRO	SD/32/13/005	M	144	03/05/13	7+	Late Notified			N	N	Y	Y	155	
18	BANNU	BANNU	KP/61/13/010	M	53	20130430	7+				Y	N	N	Y	Y	99
19	BUNIR	DAGGAR	KP/22/13/008	M	35	03/12/13	7+	04/01/13	04/02/13	NVI	Y	Y	Y	Y	148	
20	BUNIR	DAGGAR	KP/22/13/007	M	132	20130228	7+	20130330	20130331	NVI	N	N	Y	Y	160	
21	BUNIR	DAGGAR	KP/22/13/013	M	144	05/04/13	7+	05/10/13		NVI	Y	N	Y	Y	95	
22	BUNIR	DAGGAR	KP/22/13/015	M	72	01/01/13	7+	Late Notified			Y	Y	Y	Y	218	
23	CHARSADA	TANGI	KP/31/13/038	M	24	05/01/13	7+	20130617	20130618	EV	Y	Y	Y		98	
24	DIKHAN	KULACHI	KP/60/13/013	F	18	20130422	5	20130616	20130617	VACC	N	Y	Y	Y	107	
25	DIRLOWER	SAMAR BAGH	KP/23/13/015	F	13	20130130	7+	Late Notified			Y	Y	Y	Y	189	
26	HARIPUR	HARIPUR	KP/12/13/005	M	66	20130118	7+	20130219	20130220	EV	N	N	Y	Y	201	
27	HARIPUR	HARIPUR	KP/12/13/012	F	20	20130418	7+	20130519	20130520	EV	Y	Y	Y	Y	111	
28	MANSEHRA	MANSEHRA	KP/14/13/005	M	168	20130317	7+	Child Died Before Stool Collection			N	N	Y	DIED	143	
29	MARDAN	TAKHT BHAI	KP/40/13/034	M	5	03/10/13	6	Late Notified			N	Y	UK	Y	150	
30	NOWSHERA	NOWSHERA	KP/32/13/012	F	108	20130315	7+	Child Died Before Stool Collection			Y	N	Y	DIED	145	
31	PESHAWAR	PESHAWAR	KP/30/13/022	F	22	02/06/13	7+	Late Notified			N	N	N	Y	182	
32	PESHAWAR	PESHAWAR	KP/30/13/026	M	24	20130417	0	20130517	20130519	EV	Y	Y	Y	Y	112	
33	PESHAWAR	PESHAWAR	KP/30/13/039	F	54	05/03/13	7+	20130614	20130615	EV	Y	Y	Y		96	
34	SHANGLA	MARTOONG	KP/26/13/001	M	72	01/08/13	7+	Late Notified			Y	Y	Y	LOST	211	
35	SWAT	SWAT	KP/24/13/006	F	132	04/02/13	7+	04/10/13		NVI	N	N	Y	DIED	127	
36	SWAT	SWAT	KP/24/13/009	M	16	20130419	7+	20130514	20130515	NVI	Y	N	N	Y	110	
37	SWAT	SWAT	KP/24/13/012	F	120	20130330	7+	20130527	20130528	NVI	N	N	Y		130	
38	TANK	TANK	KP/63/13/005	M	42	20130225	7+	20130427	20130428	NVI	Y	N	UK	Y	163	
39	TORGHAR	TORGHAR	KP/15/13/001	M	48	20130423	7+	20130513	20130515	NVI	N	Y	Y		106	
40	QUETTA	QUETTA CITY	BN/11/13/006	F	9	04/12/13	7+	20130527	20130528	NVI	N	Y	Y	Y	117	
41	ZHOB	ZHOB	BN/21/13/002	F	84	05/05/13	7+	20130530	20130531	NVI	Y	Y	Y	Y	94	
42	BAGH	BAGH	AJ/50/13/001	M	80	20130123	7+	20130217	20130218	NVI	N	N	Y	Y	196	

€ Based on recall of parents
* Afp.rec Data as of 08-08-2013

60 days Follow-up not done

FUP = Residual Weakness at 60 days follow up.

Table 7.1: AFP CASES PENDING FOR CLASSIFICATION WITH DATE OF ONSET MORE THAN 90 DAYS* 2013 (2/2)

S. No	DISTRICT	TEHSIL	EPID	SEX	AGE	DONSET	DOSE€	DSTOOL1	DSTOOL2	LAB	FEVER	ASYM	PROG	FUP	PEND (DAYS)
43	BAJOUR	MAMUND	FT/33/13/007	M	45	01/02/13	7+	Late Notified			N	Y	Y	Y	217
44	KHYBER	LANDI KOTAL	FT/34/13/005	M	132	03/09/13	7+	03/12/13		EV	N	N	Y		151
45	KHYBER	JAMRUD	FT/34/13/002	F	24	20130118	7+	20130221	20130223	NVI	N	Y	Y		201
46	MOHMAND	PINDIALI	FT/35/13/006	F	17	05/05/13	7+	20130617	20130618	NVI	Y	Y	Y		94
47	MOHMAND	UPPER MOHMAND	FT/35/13/003	F	18	20130418	7+	05/07/13	05/08/13	NVI	Y	Y	Y		111
48	MOHMAND	PINDIALI	FT/35/13/002	M	24	20130313	7+	20130328	20130329	VACC	UK	Y	Y		147
49	WAZIR-N	MIRAN SHAH	FT/64/13/007	M	48	20130425	5	05/10/13	05/12/13	NVI	Y	N	Y	Y	104

€ Based on recall of parents
* Afp.rec Data as of 08-08-2013

60 days Follow-up not done

FUP = Residual Weakness at 60 days follow up.