



**World Health
Organization**

Weekly AFP Surveillance Update Pakistan

Week 31 (*Ended on 03rd August, 2013*)

AFP Surveillance



National Surveillance Cell Federal EPI

World Health Organization Country Office,
Chak Shahzad, Park Road,
Islamabad, Pakistan

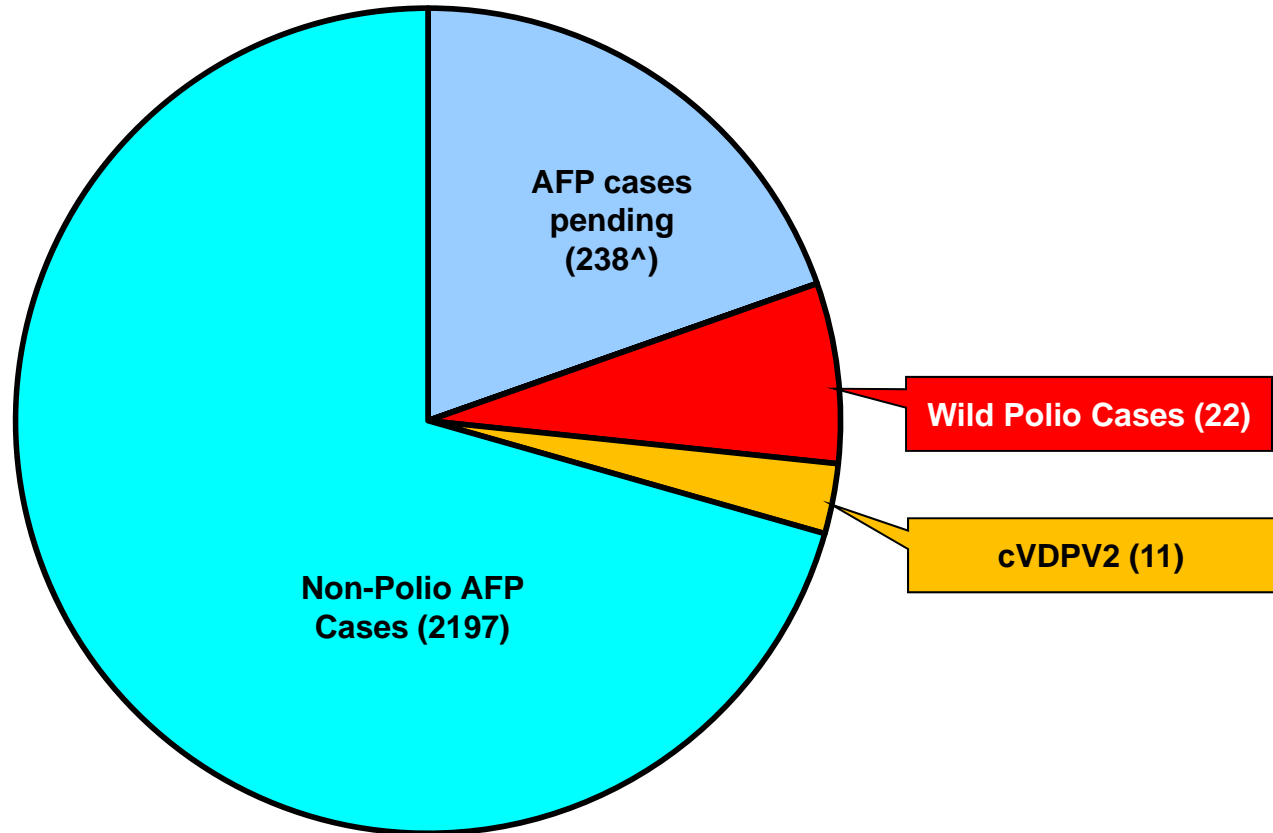
Tel: +92-51 9255123 / 9255282 /9255184

Fax: +92-51 9255274

Email: epidata@pak.emro.who.int

Web site: www.who.gov.pk

AFP Case Profile, 2013*



Total AFP Cases Reported = 2468

[^]45 Inadequate cases pending classification by ERC;
[^]72 Inadequate cases not due for FUP
[^]121 Pending in the Lab

Comparison of polio cases by province/region 2012[§] & 2013*

Region/ Province	No. of polio cases		No. of infected districts/towns		Last polio case
	2012	2013	2012	2013	
Khyber Pakhtunkhwa	8	5	6	4	30-June-13
FATA / FR Areas	13	13	4	3	03-July-13
Sindh	3	2	3	2	22-Mar-13
Balochistan	3	-	1	-	02-Oct-12
Punjab	2	2	2	2	26-May-13
Pakistan	29	22	16	11	03-July-13

Five additional districts/town declared infected based on environmental samples 2013

Total polio cases of 2012 are 58

* Afp.rec Data as of 01-08-2013

§Based on date of onset

Table 1: List of Confirmed Polio Cases, Pakistan 2013*

S.NO.	PROVINCE/ REGION	DISTRICT	TEHSIL	EPID NO.	SEX	AGE (m)	DATE ONSET OF PARALYSIS	NO. OPV DOSES (based on parents recall)		FEVER	Asymmetric Paralysis	Rapid Progression	REFUSAL	W/PV TYPE	GENETICS
								Route	SIA's						Cluster
1	SINDH	BIN QASIM	BIN QASIM	SD/62/13/001	M	24	14-Jan-13	0	0	N	Y	Y	Y	NSL1	R4
2	KP	BANNU	BANNU	NW/61/13/002	M	13	26-Jan-13	0	0	Y	N	Y	Y	NSL1	R4
3	KP	MALAKAND	DARGAI	NW/20/13/006	F	3	08-Feb-13	2	2	Y	N	Y	N	NSL1	R4
4	KP	MARDAN	MARDAN	NW/40/13/009	M	30	12-Feb-13	3	7+	Y	N	Y	N	NSL1	R4
5	PUNJAB	MIWANWALI	ISAKHEL	PB/43/13/005	F	36	07-Feb-13	3	7+	Y	N	Y	N	NSL1	R4
6	SINDH	DADU	MEHAR	SD/24/13/006	F	15	22-Mar-13	0	2	Y	N	Y	N	NSL1	R2
7	KP	MARDAN	MARDAN	NW/40/13/026	M	8	22-Apr-13	0	0	Y	Y	Y	Y	NSL1	R4
8	FATA	KHYBER\$	BARA	FT/34/13/008	M	10	24-Apr-13	2	4	Y	Y	N	N	NSL1	R4
9	FATA	FR BANNU	FR BANNU	FT/69/13/001	M	16	3-May-13	0	3	Y	Y	Y	Y	NSL1	R4
10	FATA	KHYBER\$	BARA	FT/34/13/010	M	8	10-May-13	0	0	Y	Y	Y	N	NSL1	R4
11	FATA	KHYBER\$	BARA	FT/34/13/011	M	23	14-May-13	0	2	Y	Y	Y	N	NSL1	R4
12	FATA	KHYBER\$	BARA	FT/34/13/012	M	4	16-May-13	0	0	Y	N	Y	N	NSL1	R4
13	FATA	KHYBER\$	BARA	FT/34/13/013	M	24	11-May-13	2	3	Y	N	Y	N	NSL1	R4
14	FATA	FR BANNU	FR BANNU	FT/69/13/002	F	22	19-May-13	0	7+	Y	N	Y	N	NSL1	R4
15	FATA	KHYBER\$	BARA	FT/34/13/014	M	30	20-May-13	0	0	Y	N	Y	N	NSL1	R4
16	PUNJAB	MBDIN	MALIKWAL	PB/24/13/013	F	96	26-May-13	3	7+	Y	Y	Y	N	NSL1	R4
17	FATA	KHYBER\$	BARA	FT/34/13/015	M	15	06-June-13	0	0	Y	Y	Y	N	NSL1	R4
18	FATA	WAZIR-N\$	MIR ALI	FT/64/13/010	M	9	24-May-13	0	0	Y	Y	Y	N	NSL1	R4
19	FATA	WAZIR-N\$	MIR ALI	FT/64/13/014	F	11	15-June-13	0	0	Y	Y	Y	N	NSL1	R4
20	FATA	KHYBER\$	BARA	FT/34/13/019	F	12	23-June-13	0	0	Y	N	Y	N	NSL1	R4
21	KP	PESHAWAR	PESHAWAR	KP/30/13/042	M	12	30-June-13	0	0	Y	N	Y	Y	NSL1	R4
22	FATA	KHYBER\$	BARA	FT/34/13/020	F	12	03-July-13	0	0	N	N	Y	N	NSL1	

\$ Security compromised area

* Afp.rec Data as of 01-08-2013

Table 2: LAB Update 2013*

Month of Onset	AFP Cases	No virus isolated	Cases Under Process		Isolated Viruses from stools						
			Culture	ITD	Vaccine viruses		NPEV		Wild	Results within 14 days	
			n	n	n	%	n	%	n	n	%
January	333	275	0	0	19	6	37	11%	2	333	100%
February	330	285	0	0	16	5	26	8%	3	330	100%
March	308	248	0	0	7	2	52	17%	1	308	100%
April	352	244	0	0	22	6	84	24%	2	352	100%
May	419	303	1	0	15	4	91	22%	9	418	100%
June	467	321	7	1	20	4	114	24%	4	459	98%
July	292	123	84	6	9	3	69	24%	1	202	69%
Pakistan	2501	1799	92	7	108	4	473	19%	22	2402	96%

* Data as of 01-08-2013

Table 3: Urgent / ITD Pending Cases

S. #	Basic information									OPV doses				Urgent		Prov Diagnosis	Lab update			Remarks
	District	Tehsil	Union council	Epid number	Date of Onset	Age (M)	Sex	Date of 1st stool	Stool Adeq	Ri	SAs	Last 6 SAs	Last dose	By Field	By NSC		Lab No.	Days Inoc	Culture update	
Isolates pending for ITSD																				
1	MOHMAND	PANDIALI	DAWAT KOR	FT/35/13/011	13-Jul-13	18	F	18-Jul-13	Y	0	7+	5	01-Jul-13	N	N	INJ NEURITS/GBS	2993	4	P2	Discordant ♂
2	WAZIR-N	MIRAN SHAH	SPULGA	FT/64/13/018	13-Jul-13	18	F	18-Jul-13	Y	0	0	0		Y	Y	POLO	3042	8	L20B+	INACCESSIBLE SINCE JUN 2012
3	PESHAWAR	PESHAWAR	KHAZANA	KP/30/13/045	25-Jun-13	48	M	07-Jul-13	Y	3	7+	6	28-May-13	N	N	INJ NEURITS/GBS	2805	7	SL1	Waiting for rRTPCR
4	CHAKWAL	CHAKWAL	WARWAL	PB/13/13/022	12-Jul-13	1	F	18-Jul-13	Y	0	1	1	08-Jul-13	N	Y	GBS	3037	7	SL1	Waiting for rRTPCR
5	GHOTKI	GHOTKI	BANDH	SD/42/13/041	20-Jul-13	18	M	23-Jul-13	Y	3	7+	6	17-Jun-13	N	N	HEMIPLEGIA/CVA	3127	4	SL1	Waiting for rRTPCR
6	KHIGADAP	GADAP	4	SD/63/13/011	03-Jul-13	24	F	19-Jul-13	N	3	5	3	02-May-13	N	N	GBS	3065	5	SL2	Waiting for rRTPCR
7	KHIGADAP*	GADAP	4	SD/63/13/015	09-Jul-13	12	F	25-Jul-13	N	3	6	6	08-Jul-13	Y	Y	GBS	3148	1	L20B+	
Reported urgent (by field / NSC criteria)																				
8	FR BANNU	FR BANNU	HINDI KHEL	FT/69/13/004	21-Jul-13	10	M		#	0	0	0		Y	Y	POLO / GBS	#		UP	SPECIMENS NOT RECEIVED IN LAB
9	FR BANNU	FR BANNU	BAKA KHEL	FT/69/13/005	21-Jul-13	10	M	25-Jul-13	#	1	2	1	01-Jul-13	Y	Y	POLO / GBS	3144	6	UP	
10	KHYBER	BARA	KALANGA	FT/34/13/021	13-Jul-13	18	F	25-Jul-13	N	0	0	0		Y	N	POLO / GBS	3165	6	UP	INACCESSIBLE SINCE SEP 2009
11	WAZIR-N	MIR ALI	HAIDER KHEL	FT/64/13/020	20-Jul-13	6	M	25-Jul-13	#	0	0	0		Y	Y	POLO / INJ NEURITS	3145	6	UP	INACCESSIBLE SINCE JUN 2012

* New L20B+ † Pending for genomic sequencing # Data not available ‡ NSC Criteria = Fever, Rapid Progress, Age < 48 months and OPV Doses < 7 †† Under process
 Urgent (Field/NSC) / Inadequate specimens / Age 12-35 months / Zero OPV dose

* Data as of 05-08-2013

Summary of Laboratory data for Environmental Surveillance- Pakistan (Jan 2011 to date)

Report for Epidemiological week= 31 (28 Jul– 03 Aug, 2013)

S.No.	Site	Total Samples	2011	2012	2013	Epidemiological Weeks																																																							
						2011													2012													2013																													
Punjab						239	51	30	2																																																				
LAHORE																																																													
1	LHR-Gulshan Ravi Station	31	5	5																																																									
2	LHR-Multan Road Station	31	7	6																																																									
3	LHR-Outfall Pump Station	31	7	7																																																									
MULTAN																																																													
4	Multan-Suraj Miani, SM-1	31	8	1																																																									
5	Multan-Alli Town, AT-1	31	6	2																																																									
6	Multan-Kotli A. Fateh, KF-1	31	6	1																																																									
RAWALPINDI																																																													
7	RWP-Safdarabad, SA-1	31	11	7	1																																																								
FATSAABAD																																																													
8	COMPOSITE SITE, Pump Station	11	0	1	1	Started in 2012																																																							
9	Ismail City Road	11	0	0																																																									
Sindh						230	46	34	11																																																				
GUSHAN-E-IGBAL																																																													
10	KH-Gi Chakora Nulla	31	6	3																																																									
11	KH-Gi-Rashid Minhas Rd	31	8	1																																																									
GADAP																																																													
12	KH-Gadap-Composite site	31	11	6	3																																																								
13	KH-Gadap-Sohrab Goth	31	10	10	2																																																								
BALDIA																																																													
14	KH-Baldia-Sajan Goth	31	4																																																										
15	KH-Baldia-Composite	31	7	1																																																									
SUKKUR																																																													
16	SUK-Miani P.Station-Sukkur city	16	4																																																										
17	SUK-Makka P.Station-N.Sukkur	15	3			Started in 2012																																																							
HYDERABAD																																																													
18	HYD-Tulsidas P. Station	13	6	6																																																									
Khyber Pakhtunkhwa						62	29	20	10																																																				
PESHAWAR																																																													
19	PWR-Shahreen Town, SF-1	31	11	11	7																																																								
20	PWR-Lara Ma, LM-1	31	8	9	3																																																								
Balochistan						72	20	4	1																																																				
QUETTA																																																													
21	Quetta-Jattak Kill, JT-0	30	11	2																																																									
22	Quetta-Jam-e-Safia, JS-1	31	9	2																																																									
23	Quetta-Surpud, SP-1	11		1		Started in 2012																																																							
Pakistan						603	116	88	34																																																				

- Wild poliovirus type 1 (WPV1)
- Wild poliovirus type 3 (WPV3)
- ■ Mixture WPV1 & WPV3
- No WPV Isolated
- Under process
- Scheduled sampling, sample not collected
- No sampling scheduled
- Mixture WPV1 & VDPV type 2

SUMMARY

Total Sites = 23

Total Samples Collected (2011-2012-2013) = 603

Total Samples with results available = 591

Total samples positive for Wild PV (2011-2012-2013) = **248** (136+88+22) (WPV1= 248)

Samples Positive for VDPV= 1 (Type 2 VDPV from KHI-Gadaap)

Comparison environmental sampling results 2012-13*

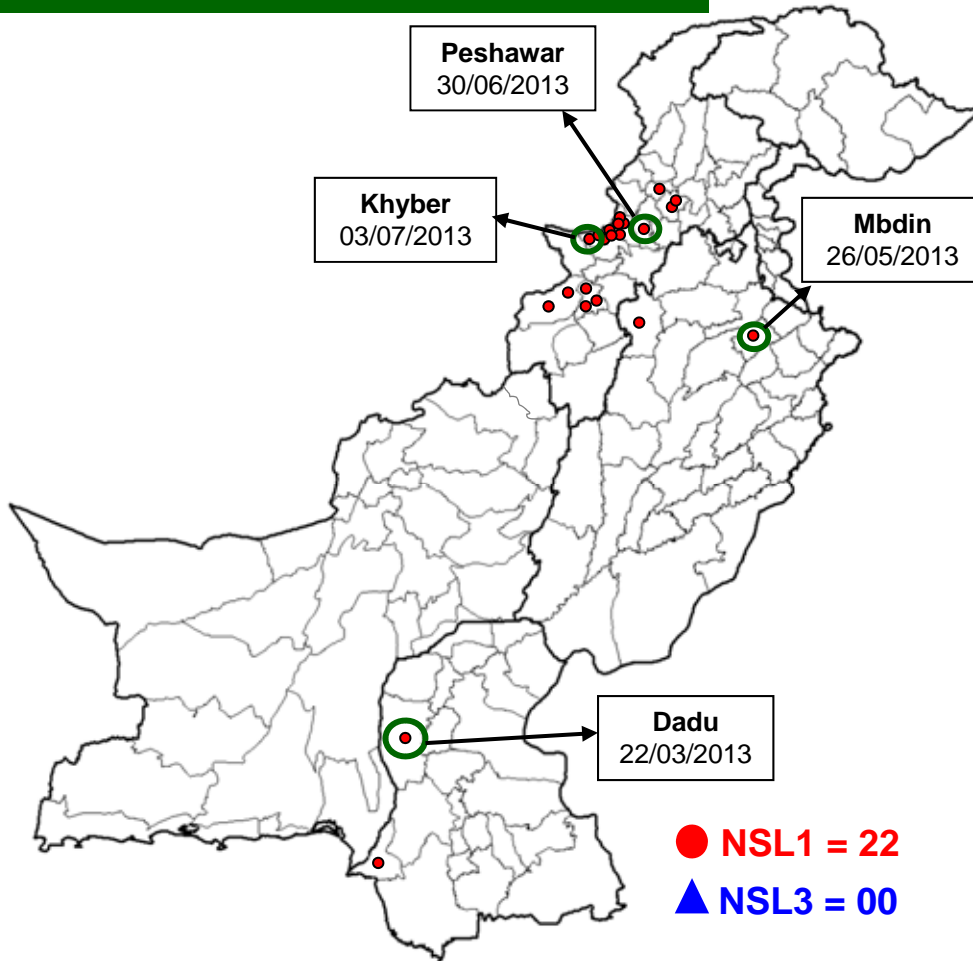
District/ Town	2012			2013*			Last Isolate
	Total	Wild		Total	Wild		
Lahore	20	13	65%	34	0	0%	20-Nov-12
Multan	19	4	21%	19	0	0%	18-Jun-12
Rawalpindi	6	4	67%	6	1	17%	25-Mar-13
Faisalabad	Sampling started week 36			20	1	8%	03-Jan-13
G IQbal	13	1	8%	13	0	0%	04-Oct-12
Gadap	13	7	54%	18	5	38%	08-July-13
Baldia	13	1	8%	13	0	0%	10-Jul-12
Sukkur	6	5	83%	13	0	0%	05-Sep-12
Hyderabad	1	1	100%	7	6	86%	10-Jul-13
Peshawar	13	10	77%	13	10	77%	10-Jul-13
Quetta	13	2	15%	18	1	6%	20-Feb-13
Total	117	48	41%	174	24	16%	10-Jul-13

* Comparison of samples till week 31 of both years with available results

Data source Polio RRL

Map1: Distribution of Wild Polio cases Pakistan 2013*

Districts/ Towns with Wild Polio cases = 11



Province/ Country	Date of Last Case		Number of cases 2013	
	P1	P3	P1	P3
PUNJAB	May, 2013	Jun, 2010	2	-
SINDH	Mar, 2013	Jan, 2010	2	-
KHYBER- PAKHTUNKHWA	Apr, 2013	Oct, 2010	5	-
FATA	July, 2013	Apr, 2012	13	-
BALUCHISTAN	Oct, 2012	Apr, 2010	-	-
AJK	-	Jun, 2000	-	-
GILGIT-BALTISTAN	Aug, 2012	-	-	-
ISLAMABAD	Sep, 2008	Sep, 2008	-	-
PAKISTAN	July, 2013	Apr, 2012	22	-

○ District with last polio case in province

* Afp.rec Data as of 01-08-2013

Cases randomly placed
in districts

— Provincial Boundary
— Districts Boundary

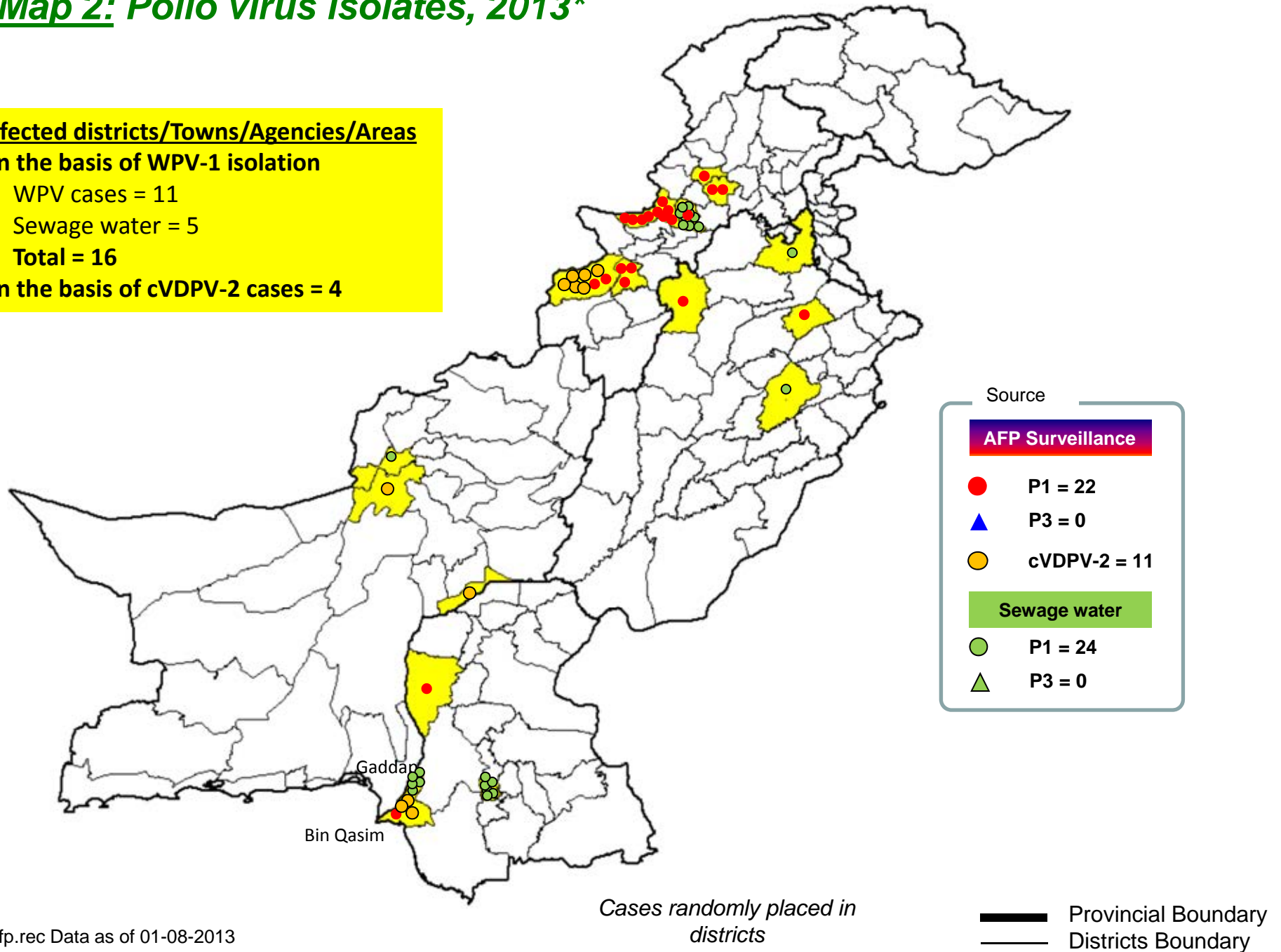
Map 2: Polio virus isolates, 2013*

Infected districts/Towns/Agencies/Areas

On the basis of WPV-1 isolation

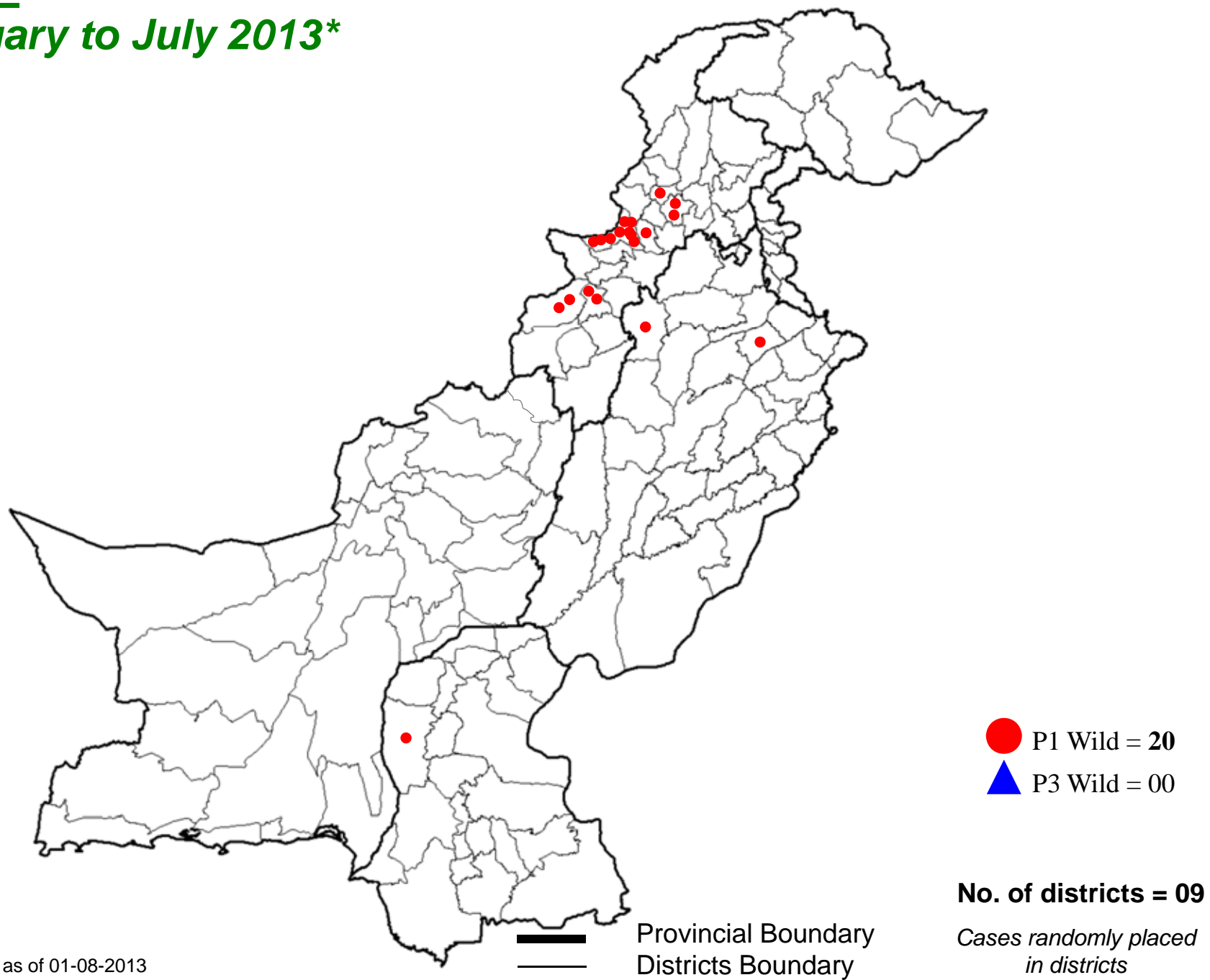
- WPV cases = 11
- Sewage water = 5
- Total = 16

On the basis of cVDPV-2 cases = 4



* Afp.rec Data as of 01-08-2013

Map 3: Wild Polio cases in the last 6 months from February to July 2013*



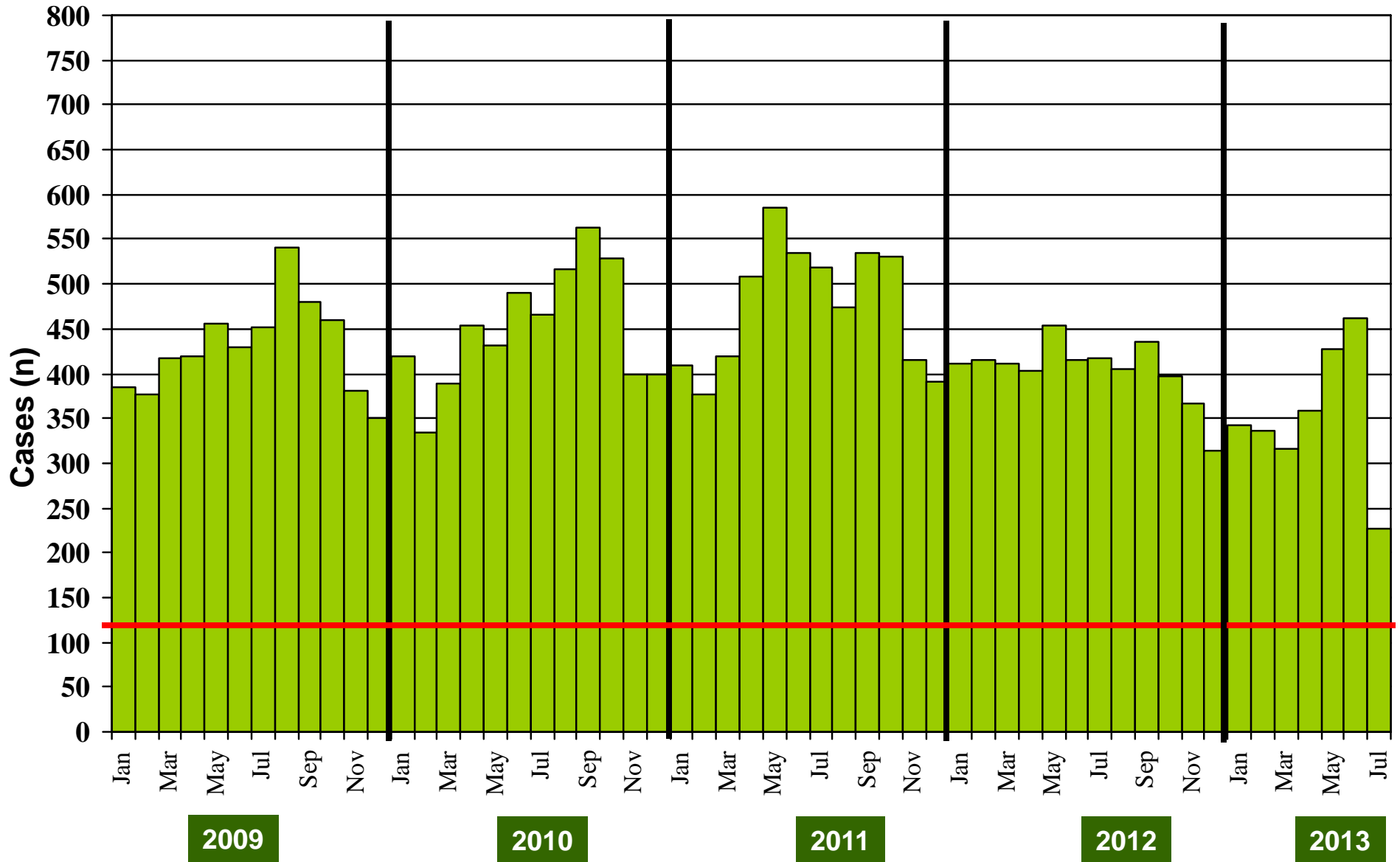
**Table 4: Distribution of AFP Cases By Week of Onset ^
Pakistan 2013* [Week number/Ending on]**

PROVINCE	W 16 20 Apr 2013	W 17 27 Apr 2013	W 18 04 May 2013	W 19 11 May 2013	W 20 18 May 2013	W 21 25 May 2013	W 22 01 June 2013	W 23 08 June 2013	W 24 15 June 2013	W 25 22 June 2013	W 26 29 June 2013	W 27 06 July 2013	W 28 13 July 2013	W 29 20 July 2013	W 30 27 July 2013
PUNJAB	58	47	50	45	53	57	46	64	60	49	38	45	44	41	15
SINDH	20	16	17	22	21	21	23	21	13	27	18	21	23	12	6
KP	21	10	15	15	9	12	36	21	22	14	11	16	19	14	11
FATA	1	6	2	7	7	5	2	6	6	1	4	7	5	2	2
BALUCHISTAN	3	1	1	1	7	7	6	7	4	8	5	3	2	4	1
AJK	0	0	2	0	2	0	1	2	1	2	1	2	0	1	1
GILGIT BILTISTAN	0	0	1	0	0	0	0	0	0	0	0	1	0	0	0
ISLAMABAD	0	1	0	2	0	2	0	2	0	0	0	1	0	0	1
PAKISTAN	103	81	88	92	99	104	114	123	106	101	77	96	93	74	37

* Afp.rec & Afplab.rec: Data as of 01-08-2013

^ MMWR Epidemiological Weeks

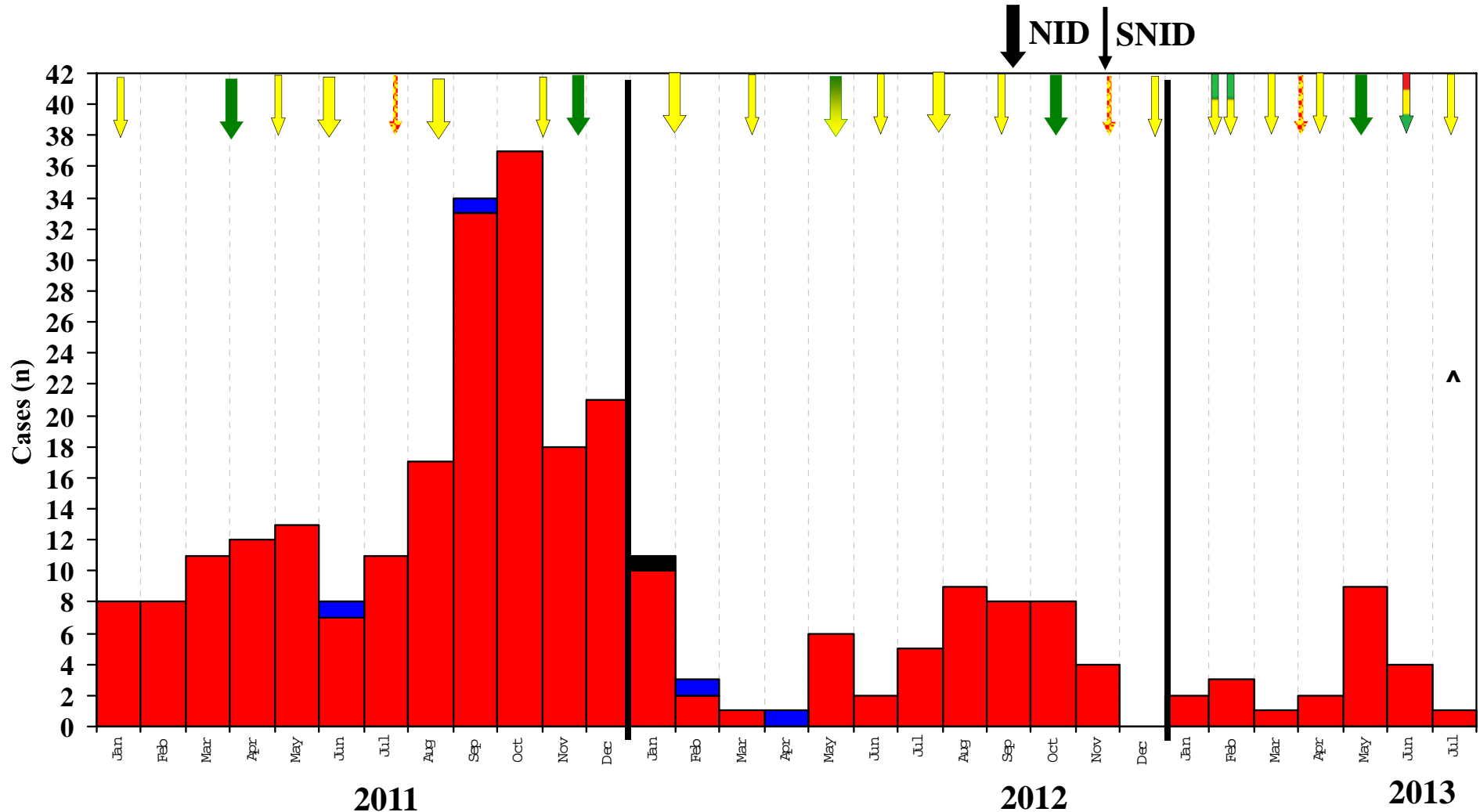
Graph 1: Distribution of AFP Cases by Month, Pakistan 2009-2013*



@ Non-polio AFP rate of 2/100,000 children < 15 years

*Afp.rec Data as of 01-08-2013

Confirmed Polio Cases By Poliovirus Type, 2011-2013*



Vaccine Type
■ mOPV1 ■ mOPV3 ■ Trivalent ■ Bivalent

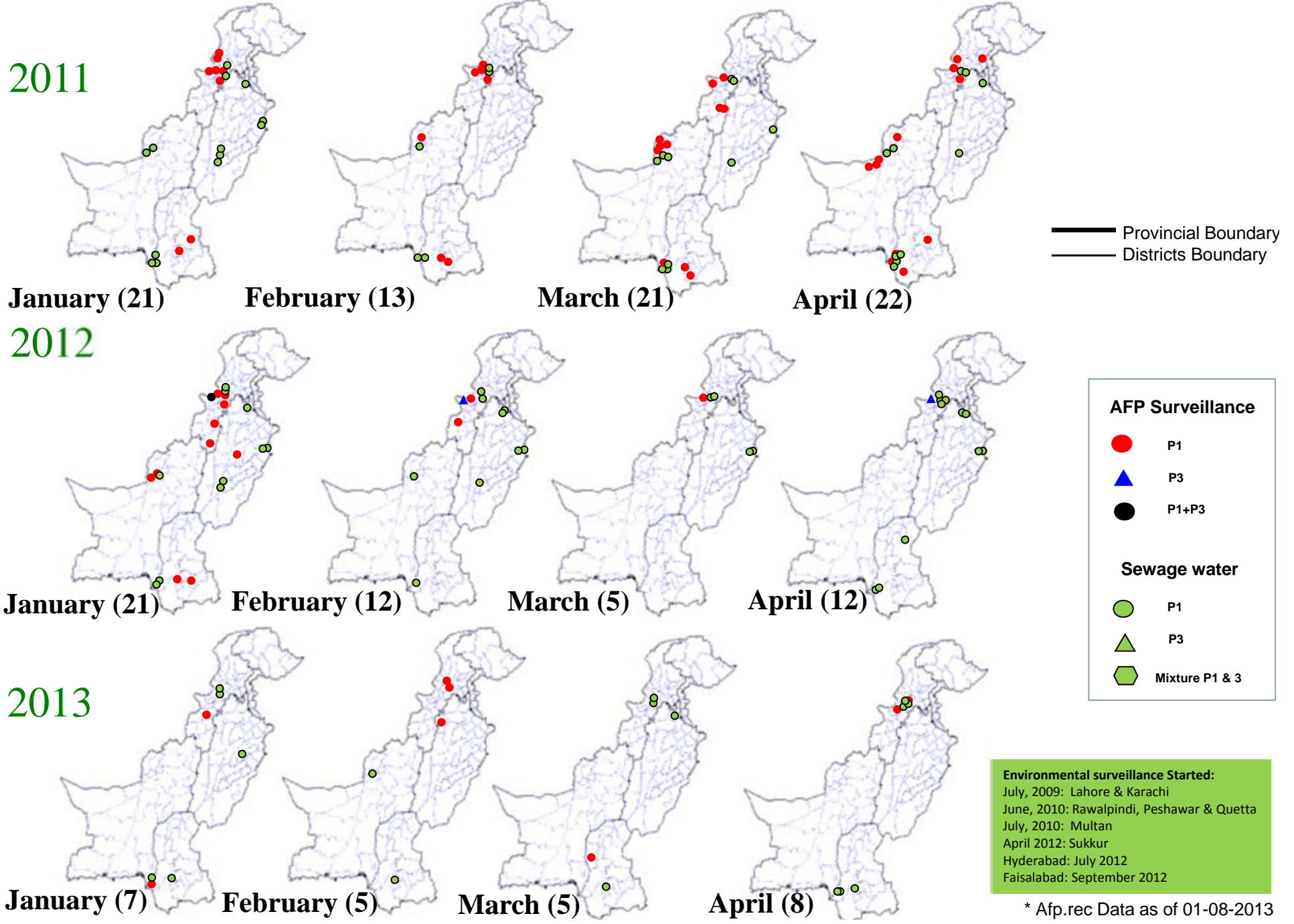
Months / Years

^ Data incomplete
Virus Type

■ NSL3 ■ NSL1 ■ NSL1 & NSL3

* Data source AFP 01/08/2013

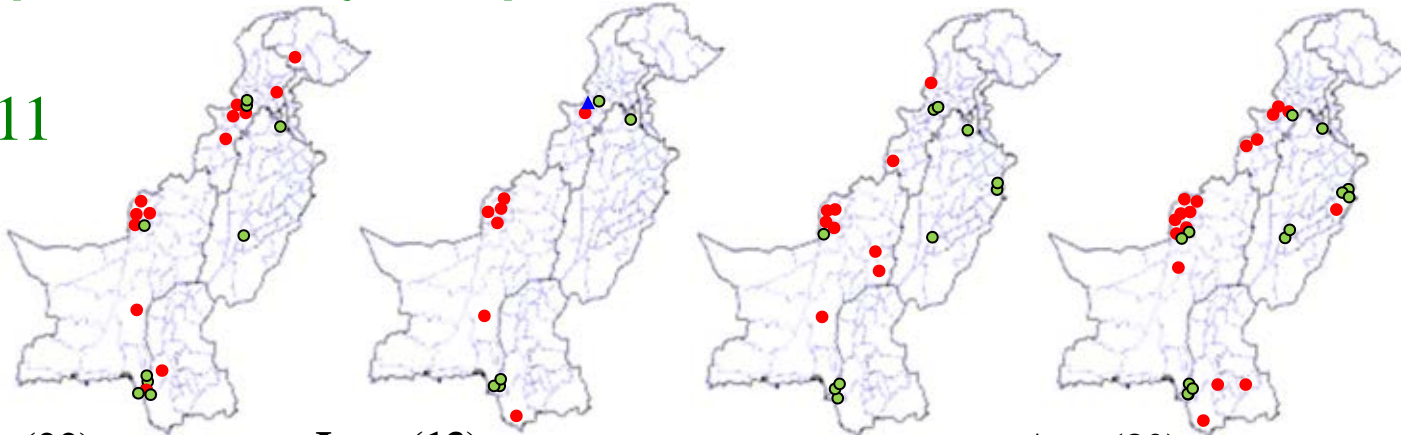
Map 4: Monthly Comparison of P1 & P3 Polio Cases/Isolates 2011-2013*



* Afp.rec Data as of 01-08-2013

Map 4.1: Monthly Comparison of P1 & P3 Polio Cases/Isolates 2011-2013*

2011



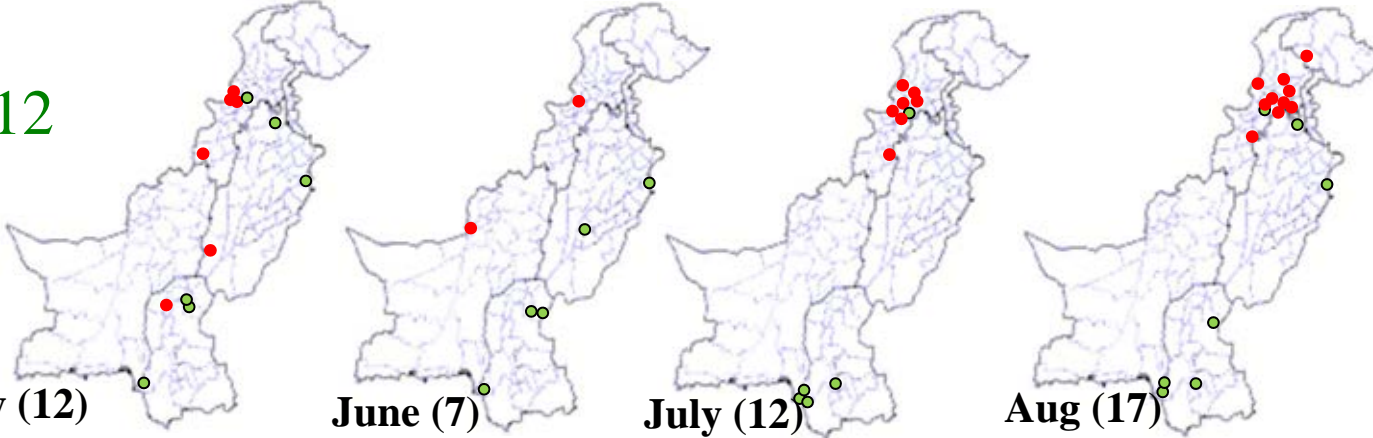
May (22)

June (13)

July (19)

Aug (30)

2012



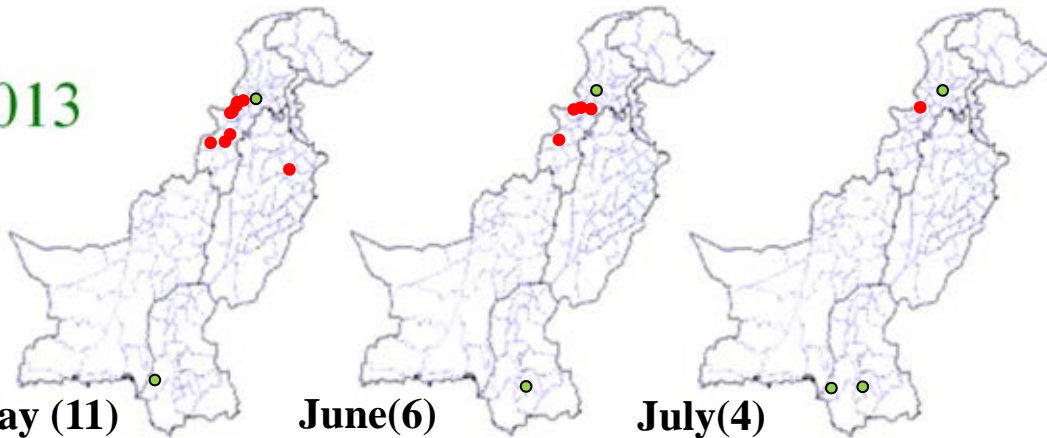
May (12)

June (7)

July (12)

Aug (17)

2013



May (11)

June(6)

July(4)

AFP Surveillance

- P1
- ▲ P3
- Mixture P1 & 3

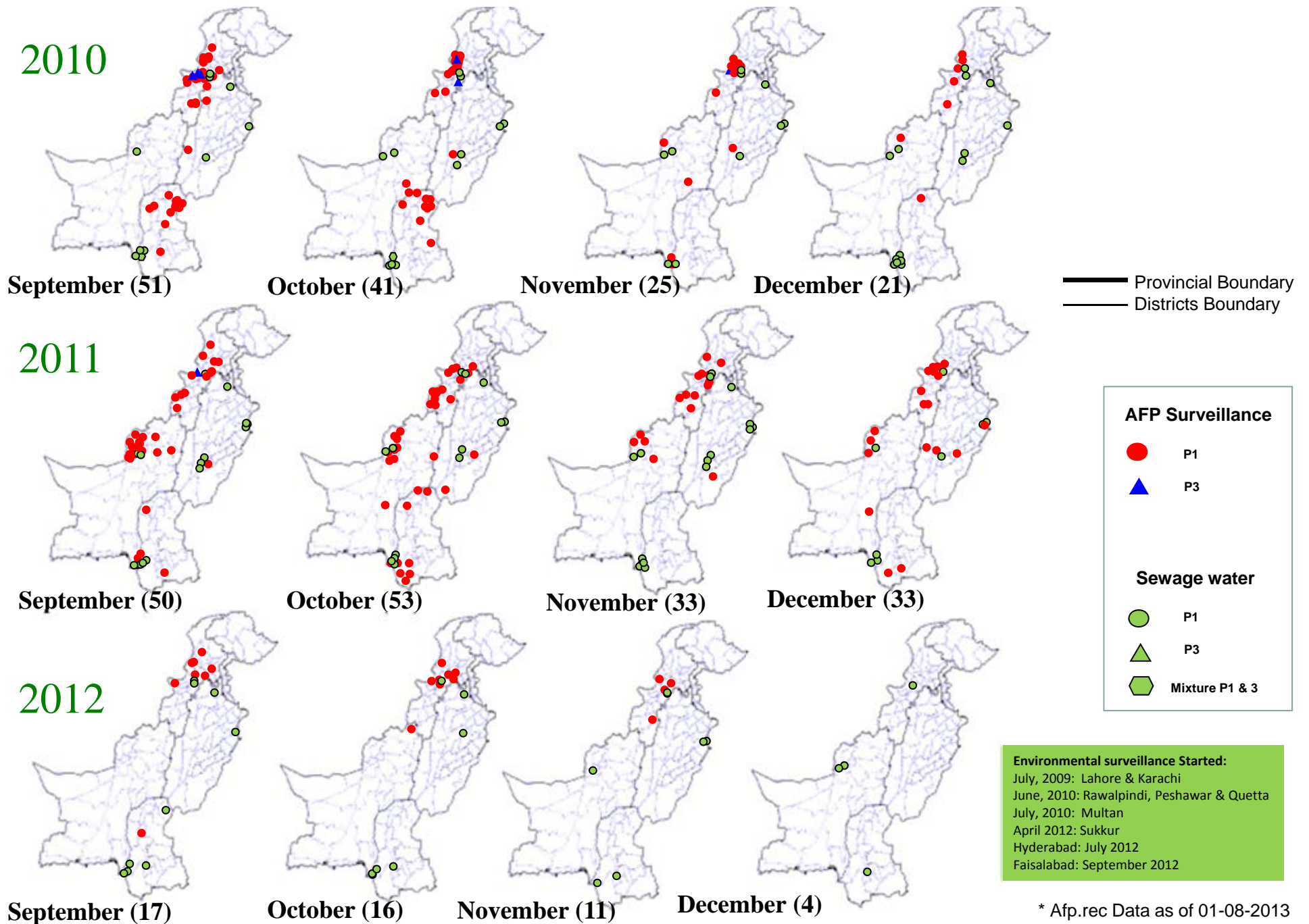
Sewage water

- P1
- ▲ P3
- Mixture P1 & 3

Environmental surveillance Started:
 July, 2009: Lahore & Karachi
 June, 2010: Rawalpindi, Peshawar & Quetta
 July, 2010: Multan
 April 2012: Sukkur
 Hyderabad: July 2012
 Faisalabad: September 2012

* Afp.rec Data as of 05-08-2013

Map 4.2: Monthly Comparison of P1 & P3 Polio Cases/Isolates 2010-2012*

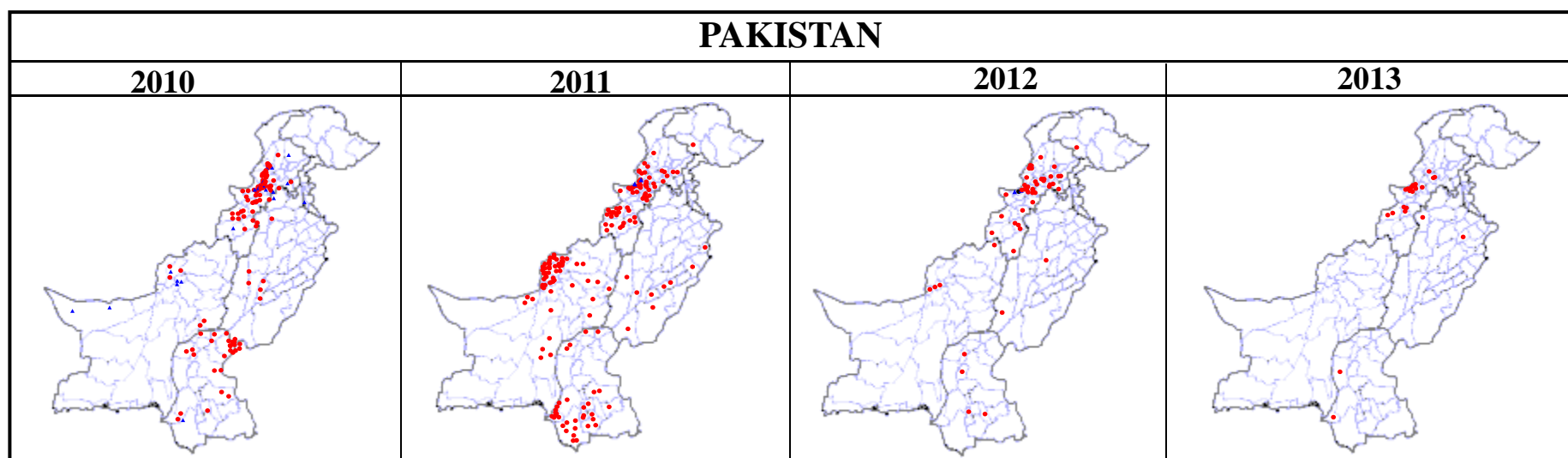


* Afp.rec Data as of 01-08-2013

Table 5: Polio Eradication Update, Pakistan 2010-2013*

Province/Region	Polio 1				Polio 3				Total Wild			
	2010	2011	2012	2013	2010	2011	2012	2013	2010	2011	2012	2013
PUNJAB	6	9	2	2	1	0	-	-	7	9	2	2
SINDH	26	33	4	2	1	0	-	-	27	33	4	2
KP	19	23	27	5	5	0	-	-	24	23	27	5
FATA^	63	57	17	13	11	2	2	-	74	59	20^	13
BALUCHISTAN	6	73	4	-	6	0	-	-	12	73	4	-
AJK	0	0	-	-	0	0	-	-	0	0	-	-
Gilgit-Baltistan	0	1	1	-	0	0	-	-	0	1	1	-
ISLAMABAD	0	0	-	-	0	0	-	-	0	0	-	-
PAKISTAN	120	196	55	22	24	2	2	-	144	198	58	22

^ FATA reported mixture of NSL1 & NSL3



* Afp.rec Data as of 01-08-2013

Table 6: Vaccination status of non polio AFP cases age 6-59 months 2010-2013*

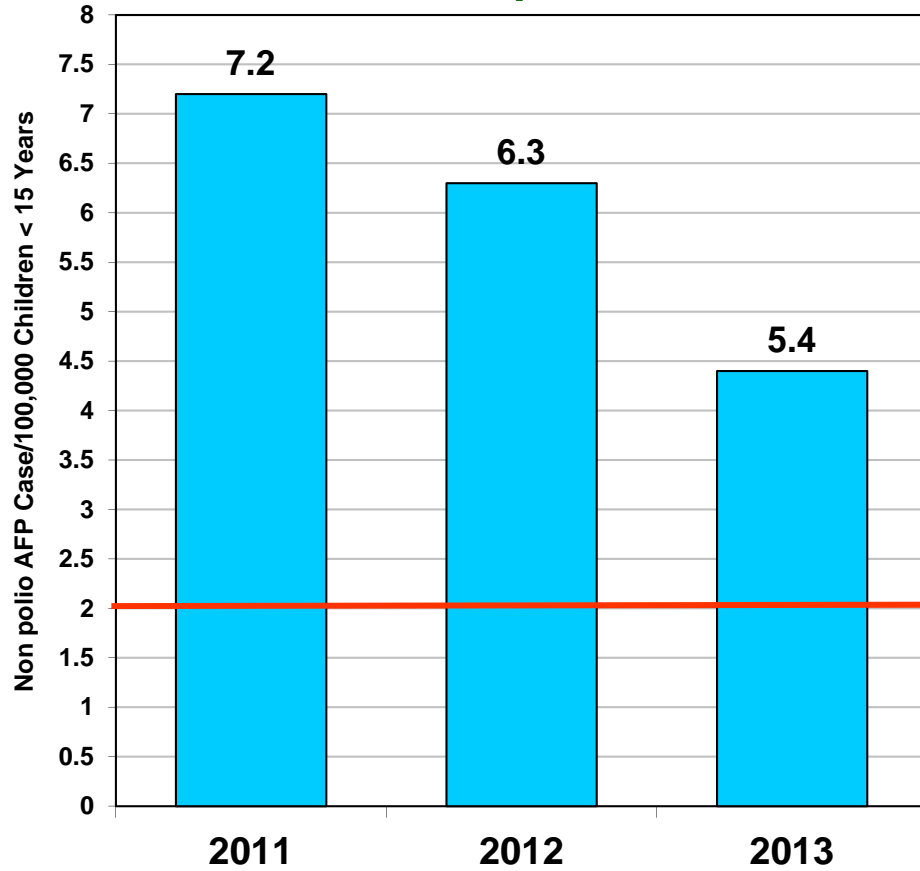
REGION	0 dose				1-2 doses				3 doses				4-6 doses				7+ doses			
	10	11	12	13	10	11	12	13	10	11	12	13	10	11	12	13	10	11	12	13
Central Punjab	0%	0%	0%	0%	1%	1%	0%	1%	1%	2%	0%	1%	7%	6%	4%	9%	91%	92%	95%	89%
North Punjab	0%	0%	0%	0%	0%	1%	0%	0%	2%	1%	0%	0%	6%	5%	4%	5%	91%	93%	96%	95%
South Punjab	0%	0%	0%	0%	1%	0%	0%	0%	0%	1%	0%	0%	5%	5%	4%	6%	94%	93%	96%	94%
PUNJAB	0%	0%	0%	0%	1%	1%	0%	0%	1%	1%	0%	0%	6%	5%	4%	7%	92%	93%	96%	92%
Karachi	2%	4%	1%	0%	0%	1%	1%	4%	3%	0%	2%	0%	7%	6%	6%	7%	88%	88%	90%	89%
North Sindh	0%	0%	0%	0%	1%	1%	0%	0%	0%	0%	1%	0%	4%	5%	4%	5%	95%	94%	94%	95%
South Sindh	0%	1%	0%	0%	1%	1%	1%	1%	1%	0%	2%	1%	9%	6%	4%	9%	89%	93%	93%	90%
SINDH	1%	1%	0%	0%	1%	1%	1%	1%	1%	0%	1%	0%	7%	6%	4%	7%	91%	92%	93%	92%
Central Khyber Pakhtunkhwa	1%	1%	2%	1%	0%	1%	1%	1%	1%	0%	0%	1%	2%	3%	2%	1%	97%	95%	95%	97%
North Khyber Pakhtunkhwa	2%	1%	2%	0%	1%	2%	2%	1%	2%	1%	2%	1%	6%	7%	9%	6%	89%	90%	85%	92%
South Khyber Pakhtunkhwa	3%	2%	2%	0%	3%	4%	1%	0%	3%	4%	1%	0%	14%	7%	9%	4%	76%	83%	87%	96%
Khyber Pakhtunkhwa	1%	1%	2%	1%	1%	2%	1%	1%	2%	1%	1%	1%	6%	5%	6%	3%	90%	91%	89%	95%
FATA	14%	14%	18%	21%	11%	10%	6%	2%	6%	5%	3%	5%	18%	11%	12%	5%	51%	61%	62%	65%
North Balochistan	12%	4%	12%	19%	0%	12%	10%	13%	4%	23%	3%	0%	12%	12%	17%	19%	72%	50%	57%	50%
Quetta Block	0%	31%	14%	14%	11%	10%	10%	9%	0%	3%	0%	0%	9%	14%	14%	14%	81%	43%	62%	64%
Rest of Balochistan	6%	7%	9%	5%	2%	2%	6%	5%	2%	5%	5%	5%	11%	10%	10%	24%	78%	76%	70%	62%
BALUCHISTAN	5%	16%	8%	11%	4%	6%	8%	8%	2%	6%	3%	3%	11%	12%	17%	17%	78%	60%	64%	61%
PAKISTAN	1%	2%	1%	1%	1%	1%	1%	1%	1%	1%	1%	1%	7%	6%	5%	7%	89%	89%	92%	90%

* Afp.rec Data as of 01-08-2013

Key Surveillance Indicators; 2011-2013*

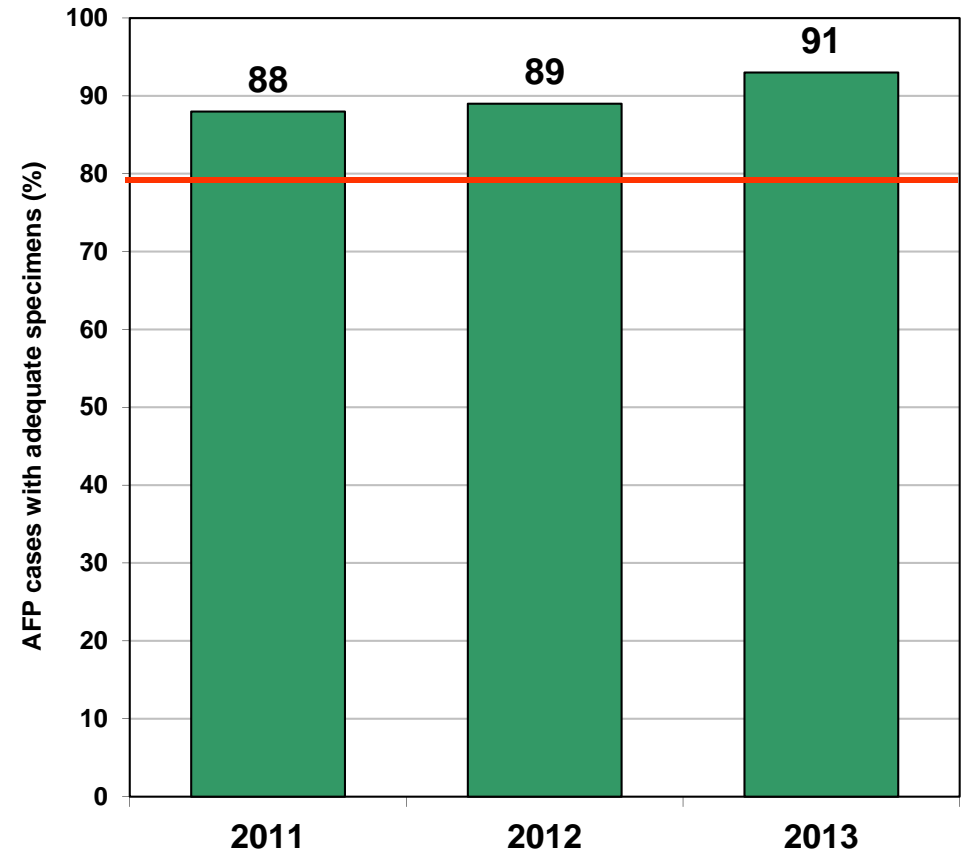
(Non polio AFP rate and % AFP cases with adequate specimens)

Graph 3



■ Non Polio AFP Rate

Graph 4



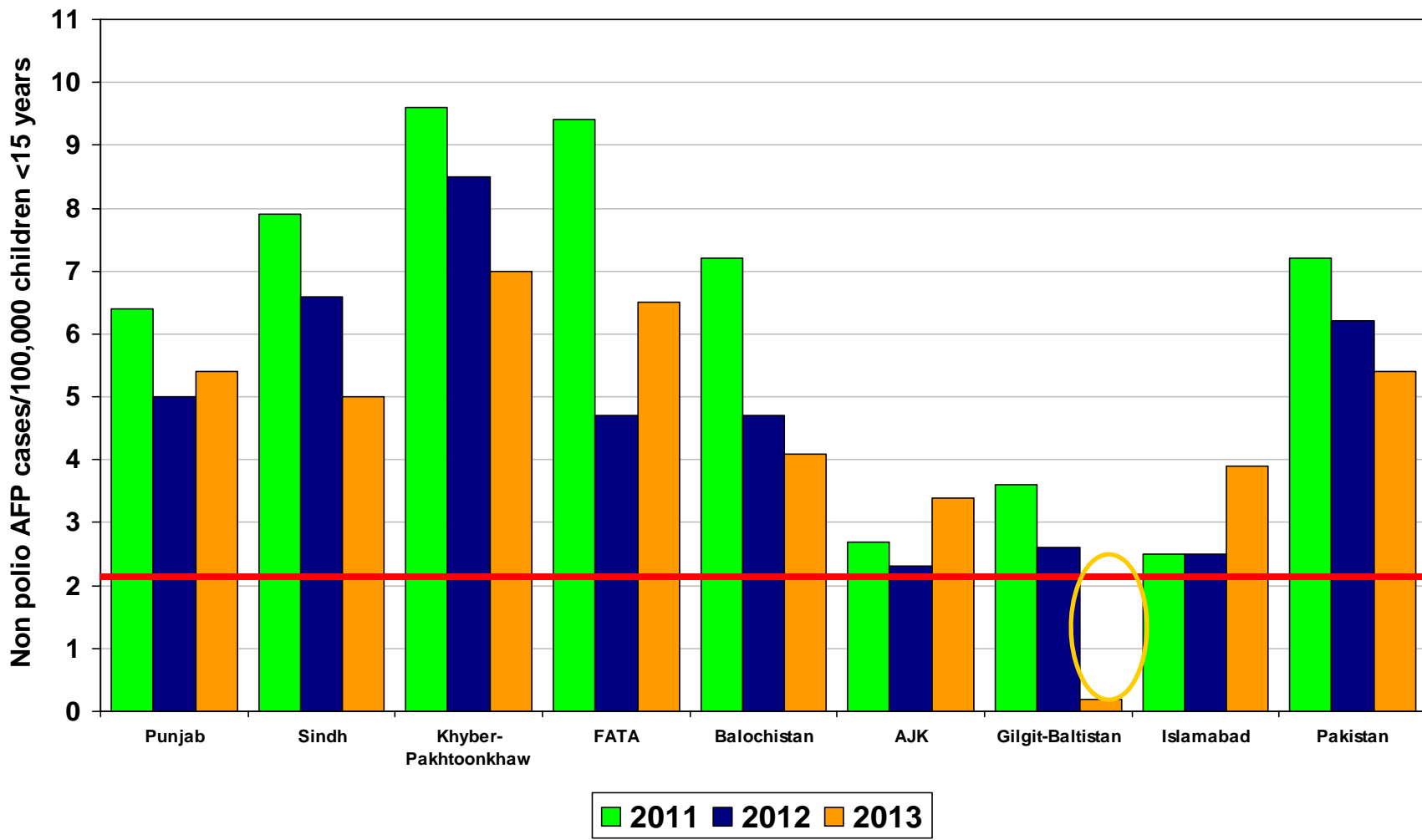
■ % AFP with Adequate Specimens

— Target

Non Polio AFP rate Up to Week No. 30 ended on 27th July, 2013

* Afp.rec Data as of 01-08-2013

Non Polio AFP Rate By Province/Regions, 2011-2013*

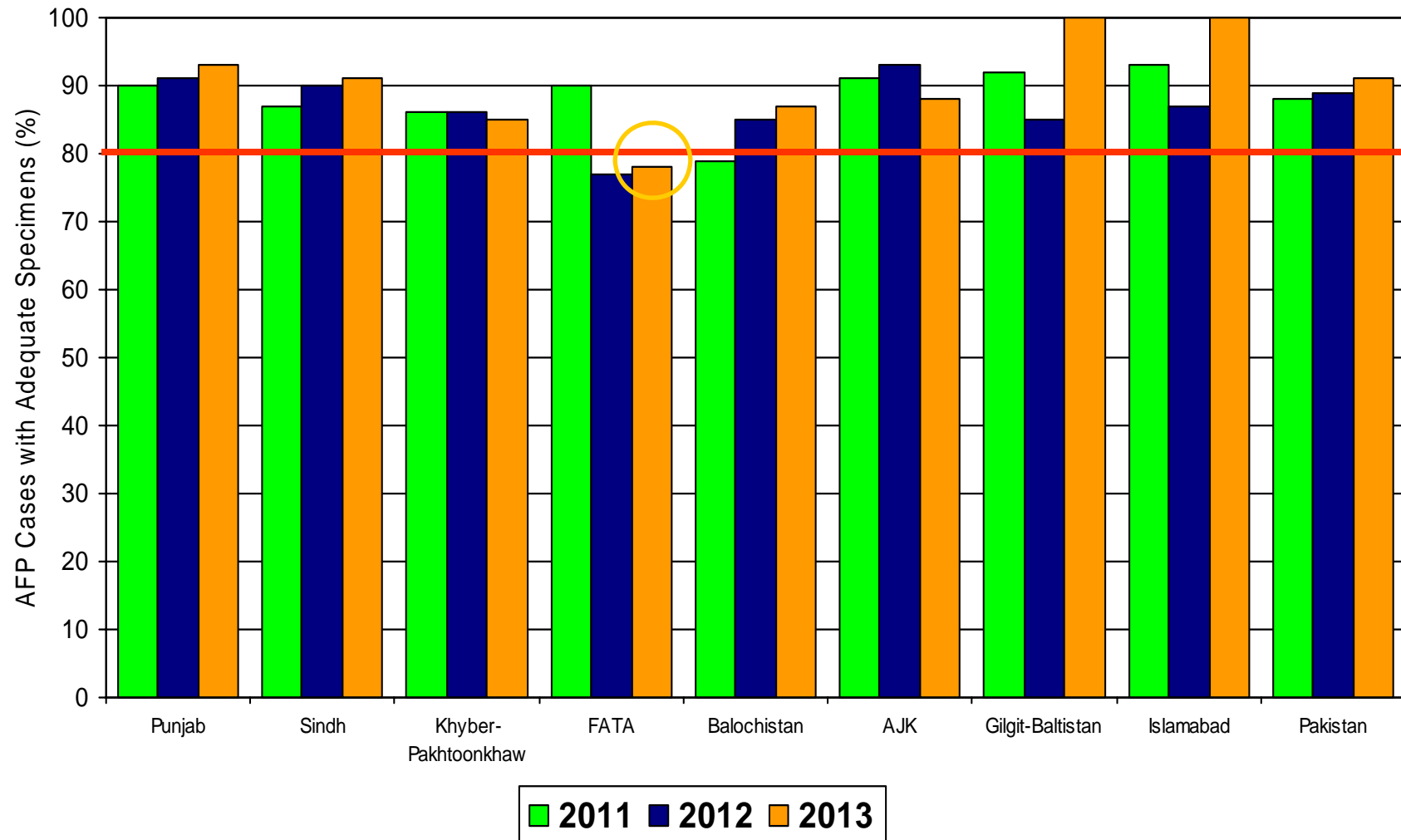


Non Polio AFP rate Up to Week No. 30 ended on 27th July, 2013

Target Non-Polio AFP Rate 2/ 100000 < 15 years of the age

* Data source AFP 01/08/2013

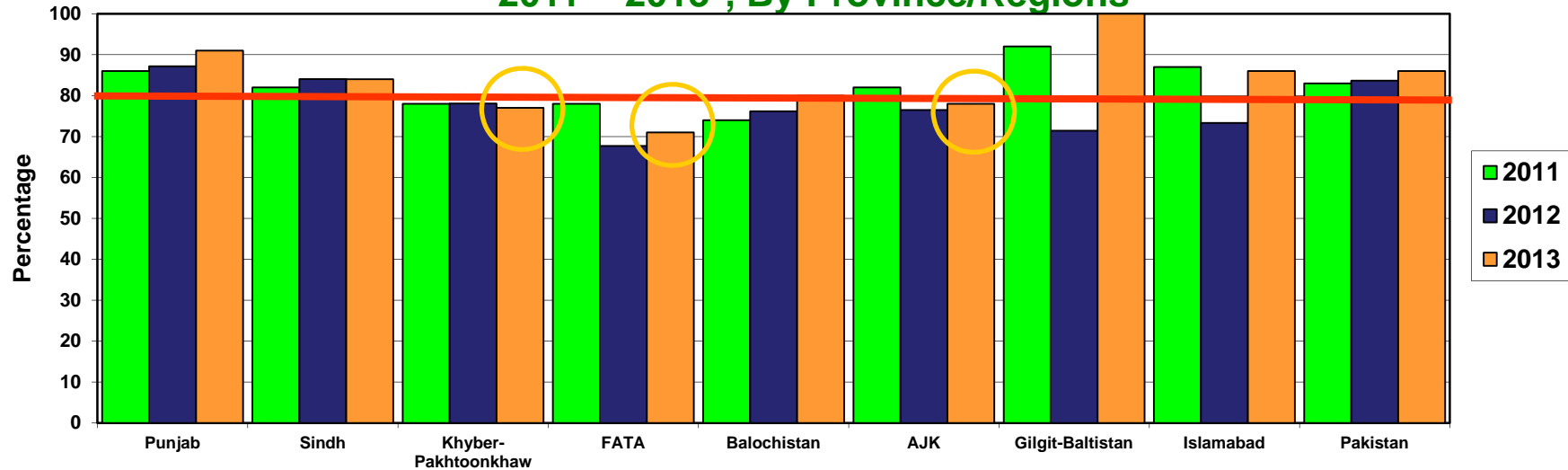
Percent AFP Cases with Adequate Specimens By Province/Regions, 2011-2013*



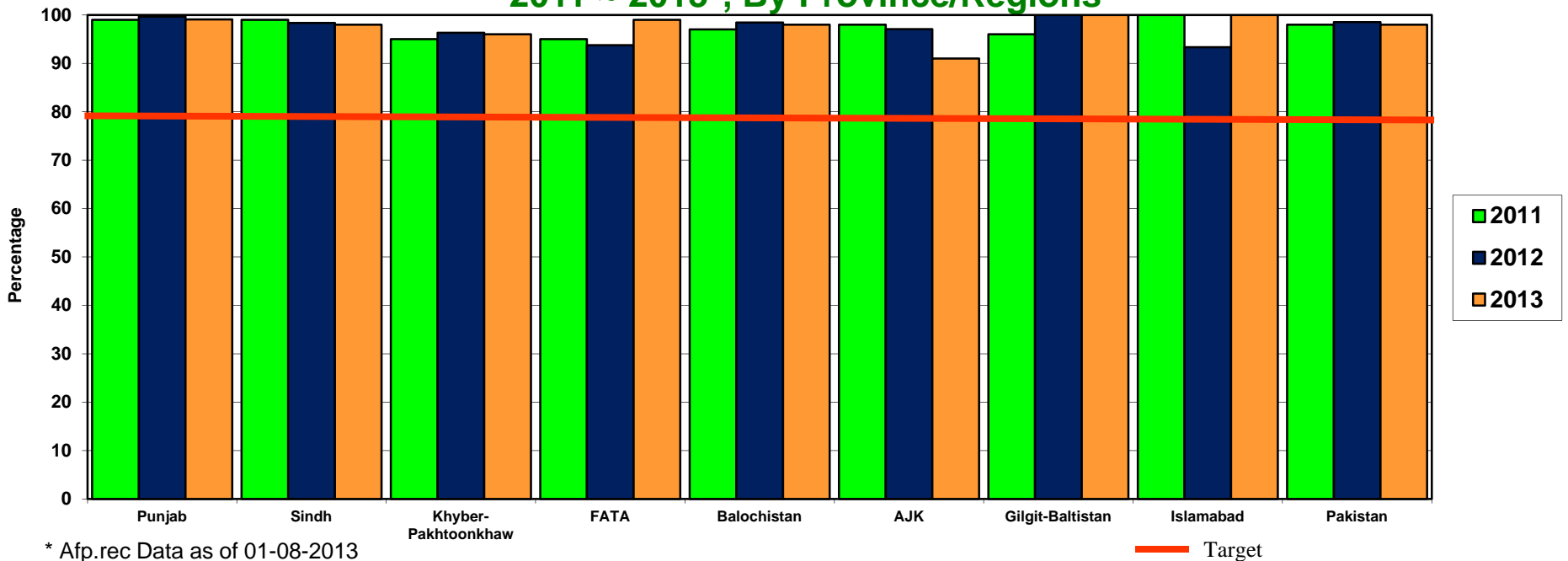
* Data source AFP 01/08/2013

Target Adequate Sample cases = 80%

**Graph 5: Percent AFP Cases Notified within 07 days of paralysis onset
2011 ~ 2013*, By Province/Regions**



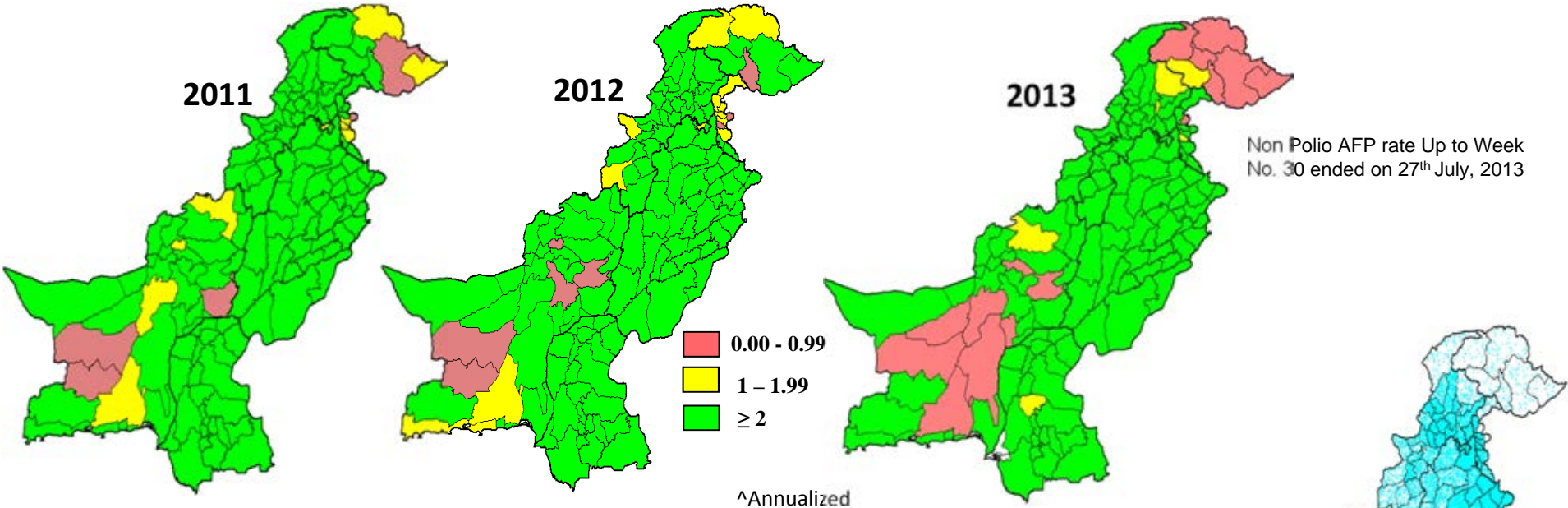
**Graph 6: Percent AFP Cases Investigated within 48 hours of notification
2011 ~ 2013*, By Province/Regions**



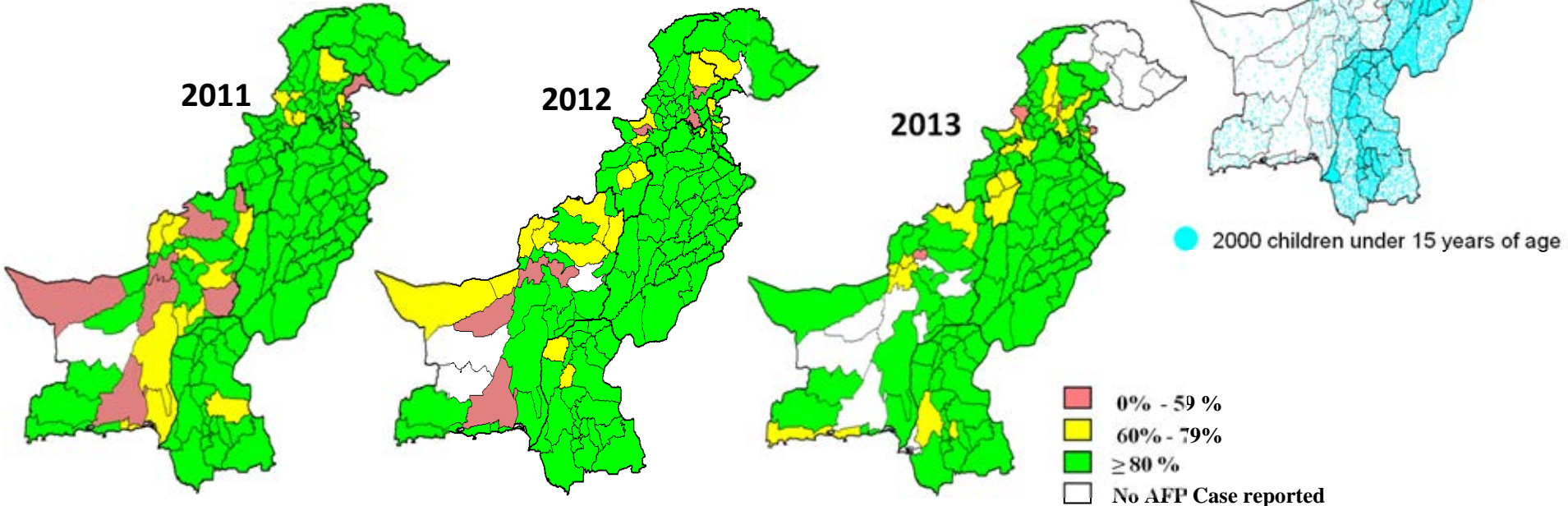
* Afp.rec Data as of 01-08-2013

— Target

Non-Polio^ AFP Rate by District



Percent AFP Cases with Adequate Specimens, by District



* Data source AFP 01/08/2013

Table 7: AFP CASES PENDING FOR CLASSIFICATION WITH DATE OF ONSET MORE THAN 90 DAYS* 2013

S. No	DISTRICT	TEHSIL	EPID	SEX	AGE	DONSET	DOSE€	DSTOOL1	DSTOOL2	LAB	FEVER	ASVM	PROG	FUP	PEND (DAYS)	
1	KARAK	KARAK	KP/51/13/005	F	13	01-01-13	7+	15-02-13	17-02-13	EV	N	Y	Y	Y	212	
2	KHYBER	LANDI KOTAL	FT/34/13/003	M	84	10-02-13	7+	25-02-13	27-02-13	NVI	Y	N	Y		172	
3	KHYBER	JAMRUD	FT/34/13/004	F	16	22-01-13	7+	05-03-13	06-03-13	EV	Y	Y	Y		191	
4	MARDAN	MARDAN	KP/40/13/007	M	29	17-01-13	7+	06-02-13	07-02-13	EV	Y	Y	Y	Y	196	
5	PESHAWAR	PESHAWAR	KP/30/13/008	M	96	15-01-13	7+	26-02-13	27-02-13	NVI	N	N	Y	Y	198	
6	SWAT	SWAT	KP/24/13/004	M	120	20-02-13	7+	Child Died Before Stool Collection			Y	N	Y	DIED	162	
7	WAZIR-N	MIRAN SHAH	FT/64/13/001	M	96	08-02-13	6	13-02-13		NVI	Y	N	Y	DIED	174	
8	FAISALABAD	JARANWALA	PB/51/13/045	F	10	01-03-13	1	LATE NOTIFIED			N	Y	Y	Y	153	
9	MUZFARGARH	ALIPUR	PB/83/13/057	M	30	25-04-13	7+				Y	Y	Y	Y	Y	98
10	MUZFARGARH	ALIPUR	PB/83/13/054	M	30	25-04-13	7+				Y	Y	Y	Y	Y	98
11	HYDERABAD	HYDERABAD RURAL	SD/21/13/006	M	84	01-04-13	7+	Child Died Before Stool Collection			Y	N	Y	DIED	122	
12	KAMBAR	WARAH	SD/55/13/006	M	96	01-01-13	7+	LATE NOTIFIED			N	Y	Y	Y	212	
13	KHIJAMSHEED	JAMSHEED	SD/66/13/004	F	60	01-05-13	7+	Child Died Before Stool Collection			Y	N	Y	DIED	92	
14	KHISADDAR	SADDAR	SD/77/13/004	F	38	05-04-13	7+	10-05-13	11-05-13	NVI	N	N	Y	Y	118	
15	NFEROZ	BHIRIA	SD/45/13/003	F	144	05-02-13	7+	Child Died Before Stool Collection			Y	Y	Y	DIED	177	
16	SANGHAR	KHIPRO	SD/32/13/005	M	144	05-03-13	7+	LATE NOTIFIED			N	N	Y	Y	149	
17	BUNIR	DAGGAR	KP/22/13/008	M	35	12-03-13	7+	01-04-13	02-04-13	NVI	Y	Y	Y	Y	142	
18	BUNIR	DAGGAR	KP/22/13/007	M	132	28-02-13	7+	30-03-13	31-03-13	NVI	N	N	Y	Y	154	
19	BUNIR	DAGGAR	KP/22/13/015	M	72	01-01-13	7+	LATE NOTIFIED			Y	Y	Y	Y	212	
20	CHARSADA	TANGI	KP/31/13/038	M	24	01-05-13	7+	17-06-13	18-06-13	EV	Y	Y	Y		92	
21	DIKHAN	KULACHI	KP/60/13/013	F	18	22-04-13	5	16-06-13	17-06-13	VACC	N	Y	Y	Y	101	
22	DIRLOWER	SAMAR BAGH	KP/23/13/015	F	13	30-01-13	7+	LATE NOTIFIED			Y	Y	Y	Y	183	
23	HARIPUR	HARIPUR	KP/12/13/005	M	66	18-01-13	7+	19-02-13	20-02-13	EV	N	N	Y	Y	195	
24	HARIPUR	HARIPUR	KP/12/13/012	F	20	18-04-13	7+	19-05-13	20-05-13	EV	Y	Y	Y	Y	105	
25	MANSEHRA	MANSEHRA	KP/14/13/005	M	168	17-03-13	7+	Child Died Before Stool Collection			N	N	Y	DIED	137	
26	MARDAN	TAKHT BHAI	KP/40/13/034	M	5	10-03-13	6	LATE NOTIFIED			N	Y	UK	Y	144	
27	NOWSHERA	NOWSHERA	KP/32/13/012	F	108	15-03-13	7+	Child Died Before Stool Collection			Y	N	Y	DIED	139	
28	PESHAWAR	PESHAWAR	KP/30/13/022	F	22	06-02-13	7+	LATE NOTIFIED			N	N	N	Y	176	
29	PESHAWAR	PESHAWAR	KP/30/13/026	M	24	17-04-13	0	17-05-13	19-05-13	EV	Y	Y	Y	Y	106	
30	SHANGLA	MARTOONG	KP/26/13/001	M	72	08-01-13	7+	LATE NOTIFIED			Y	Y	Y	LOST	205	
31	SWAT	SWAT	KP/24/13/006	F	132	02-04-13	7+	10-04-13		NVI	N	N	Y	DIED	121	
32	SWAT	SWAT	KP/24/13/009	M	16	19-04-13	7+	14-05-13	15-05-13	NVI	Y	N	N	Y	104	
33	SWAT	SWAT	KP/24/13/012	F	120	30-03-13	7+	27-05-13	28-05-13	NVI	N	N	Y		124	
34	TANK	TANK	KP/63/13/005	M	42	25-02-13	7+	27-04-13	28-04-13	NVI	Y	N	UK	Y	157	
35	TORGHAR	TORGHAR	KP/15/13/001	M	48	23-04-13	7+	13-05-13	15-05-13	NVI	N	Y	Y		100	
36	QUETTA	QUETTA CITY	BN/11/13/006	F	9	12-04-13	7+	27-05-13	28-05-13	NVI	N	Y	Y	Y	111	
37	BAGH	BAGH	AJ/50/13/001	M	80	23-01-13	7+	17-02-13	18-02-13	NVI	N	N	Y	Y	190	
38	BAJOUR	MAMUND	FT/33/13/007	M	45	02-01-13	7+	LATE NOTIFIED			N	Y	Y	Y	211	
39	KHYBER	LANDI KOTAL	FT/34/13/005	M	132	09-03-13	7+	12-03-13		EV	N	N	Y		145	
40	KHYBER	JAMRUD	FT/34/13/002	F	24	18-01-13	7+	21-02-13	23-02-13	NVI	N	Y	Y		195	
41	MOHMAND	UPPER MOHMAND	FT/35/13/003	F	18	18-04-13	7+	07-05-13	08-05-13	NVI	Y	Y	Y		105	
42	MOHMAND	PINDIALI	FT/35/13/002	M	24	13-03-13	7+	28-03-13	29-03-13	VACC	UK	Y	Y		141	
43	WAZIR-N	MIRAN SHAH	FT/64/13/007	M	48	25-04-13	5	10-05-13	12-05-13	NVI	Y	N	Y	Y	98	

€ Based on recall of parents
* Afp.rec Data as of 01-08-2013

60 days Follow-up not done

FUP = Residual Weakness at 60 days follow up.