

# Influenza monthly update | June 2018

In the WHO Eastern Mediterranean Region, influenza activity continues to decrease in the month of June in many countries reporting data to FluNet and EMFLU namely, Afghanistan, Bahrain, Egypt, Iran (Islamic Republic of), Iraq, Jordan, Kuwait, Lebanon, Morocco, occupied Palestinian territory, Pakistan, Qatar, Saudi Arabia, and Tunisia.

## Influenza activity by sub-type

- In June 2018, no new cases of human influenza A(H5N1) were reported in Egypt.
- In the northern Africa influenza transmission zone, Egypt reported sporadic co-circulation of all seasonal influenza viruses; while Morocco and Tunisia reported no activity.
- In the Western Asia influenza transmission zone, influenza A(H1N1)pdm09 was detected with influenza B virus in Bahrain. Kuwait, Lebanon and oPt reported circulation of influenza A(H1N1)pdm09 and influenza B; while Qatar and Saudi Arabia reported co-circulation of all seasonal influenza viruses.
- In southern Asia transmission zone, Afghanistan and Iran (Islamic Republic of) reported no influenza circulation; Pakistan reported sporadic circulation of influenza B.

### Source of transmission zones:

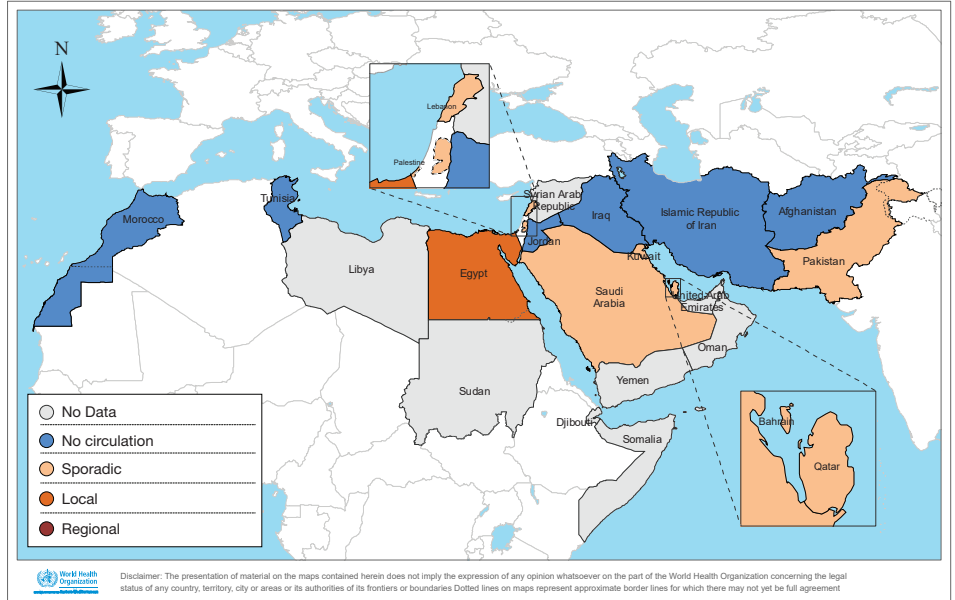
[http://www.who.int/csr/disease/swineflu/transmission\\_zones/en/](http://www.who.int/csr/disease/swineflu/transmission_zones/en/)

- Figure 2 shows the weekly distribution of influenza subtypes.

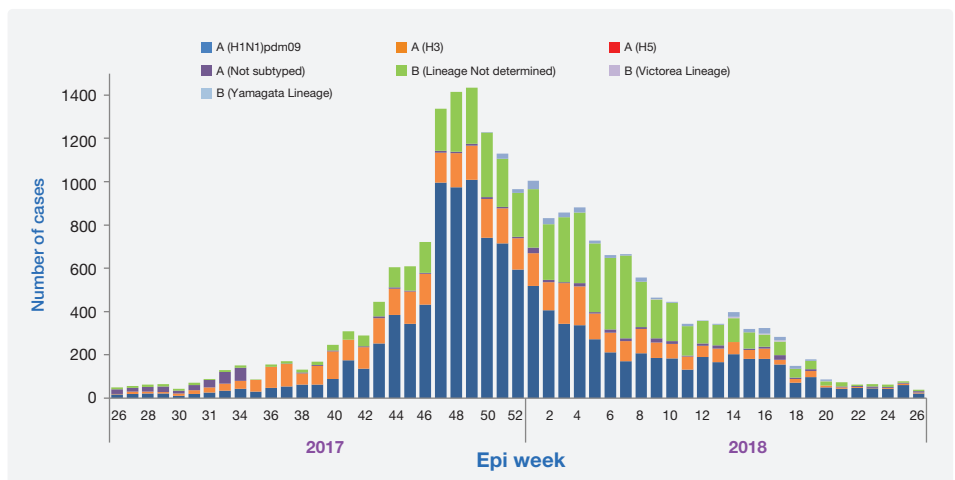
## Circulating influenza viruses by subtype

- During June 2018, national influenza centres and influenza laboratories in the Region tested a total of 4117 specimens for influenza viruses of which 303 tested positive (7%).
- The average percentage of positivity rates is 5%, with highest positivity rate recorded in Qatar.
- Of the viruses tested; 263 (87%) were influenza A viruses, including 216 (71%) influenza A(H1N1)pdm09 virus and 20 (7%) were influenza A(H3) virus. Influenza B (Lineage Not determined) virus accounted for 40 (13%) (Figure 3).

**Figure 1. Influenza geographic spread in Eastern Mediterranean Region, June 2018**

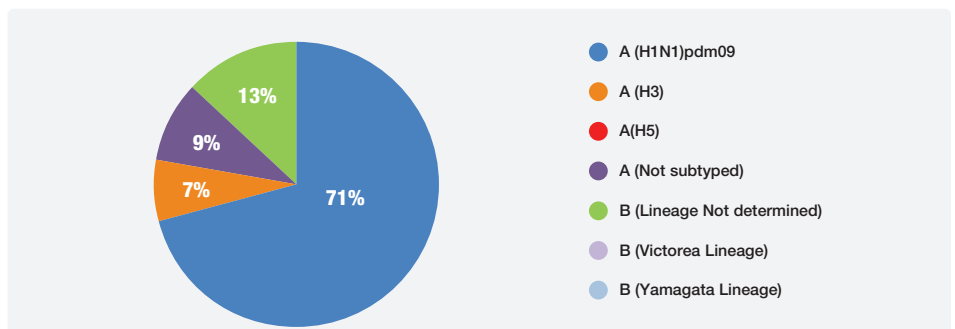


**Figure 2. Weekly positive cases of influenza by subtype, Epi week 26/2017–2018**



Source: [Flunet](#) and [EMFLU](#)

**Figure 3. Circulating influenza viruses in the EMR by subtype, Epi week 22-26, 2018**



Source: [Flunet](#) and [EMFLU](#)