

# APPLY

## Droplet PRECAUTIONS

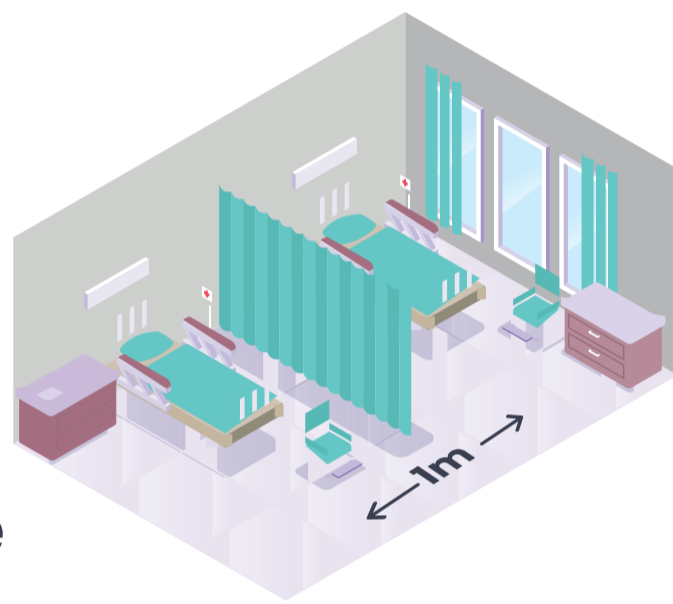
in addition to the standard precautions for patients with suspected or confirmed infections transmitted by respiratory droplets generated from patient during coughing, sneezing or talking, for example:

- COVID-19 (apply contact and droplet precautions)
- meningococcal meningitis
- mumps
- German measles



### Ensure appropriate patient placement

- Place the patient in an adequately ventilated single room or cohort patients with similar symptoms and diagnosis with spatial separation of  $\geq 1$  metre and draw privacy curtains



### Perform hand hygiene

- Wash hands with soap and water or use an alcohol-based hand rub according to WHO's 5 Moments for Hand Hygiene



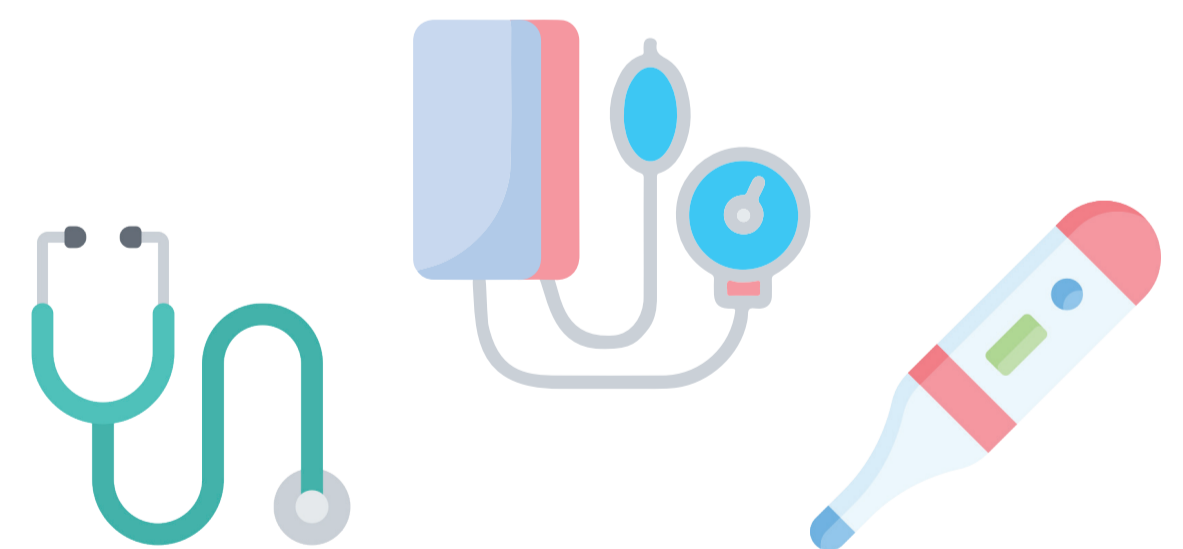
### Use personal protective equipment (PPE) appropriately

- Put on a well-fitting medical mask before entering a patient's room
- Put on additional PPE based on risk assessment
- Remove and safely dispose of contaminated PPE upon exit and perform hand hygiene



### Use dedicated or disposable patient care equipment

- Clean and disinfect reusable and shared equipment before use on another patient



### Limit transport of patient to medically necessary purposes

- When transport is necessary, instruct the patient to put on a medical mask (if tolerated) and follow respiratory and cough etiquette.



World Health Organization

REGIONAL OFFICE FOR THE Eastern Mediterranean