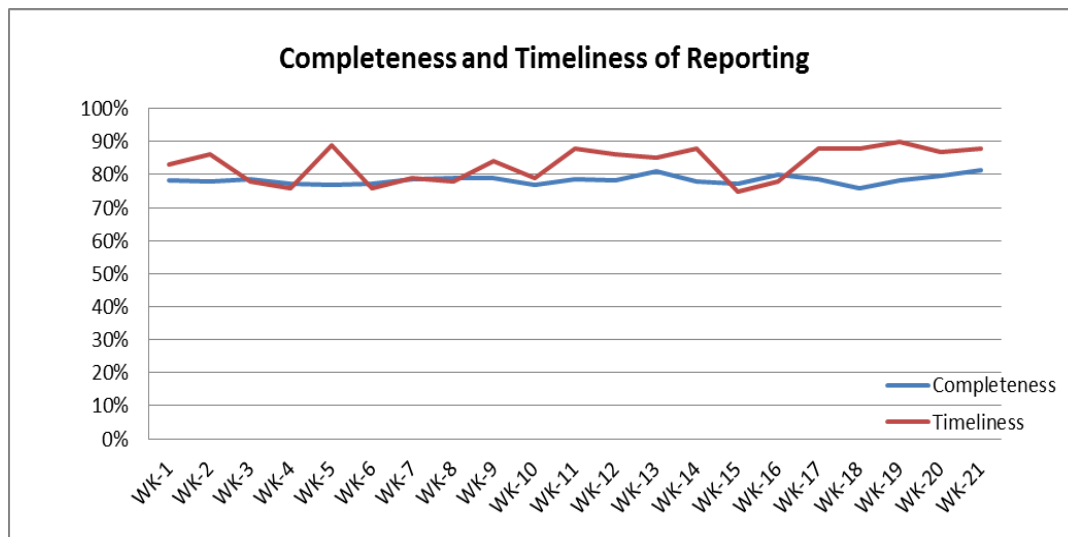


❖ Highlights:

- ❖ (8) AFP cases were reported during this week, (5) cases from Al-Mayadeen in Deir-ez-Zor, (3) cases from Homs.
- ❖ (106) Suspected Measles cases were reported during this week: from Damascus (17), Rural Damascus (19), Homs (16), Deir-ez-Zor (10), and Lattakia (12).

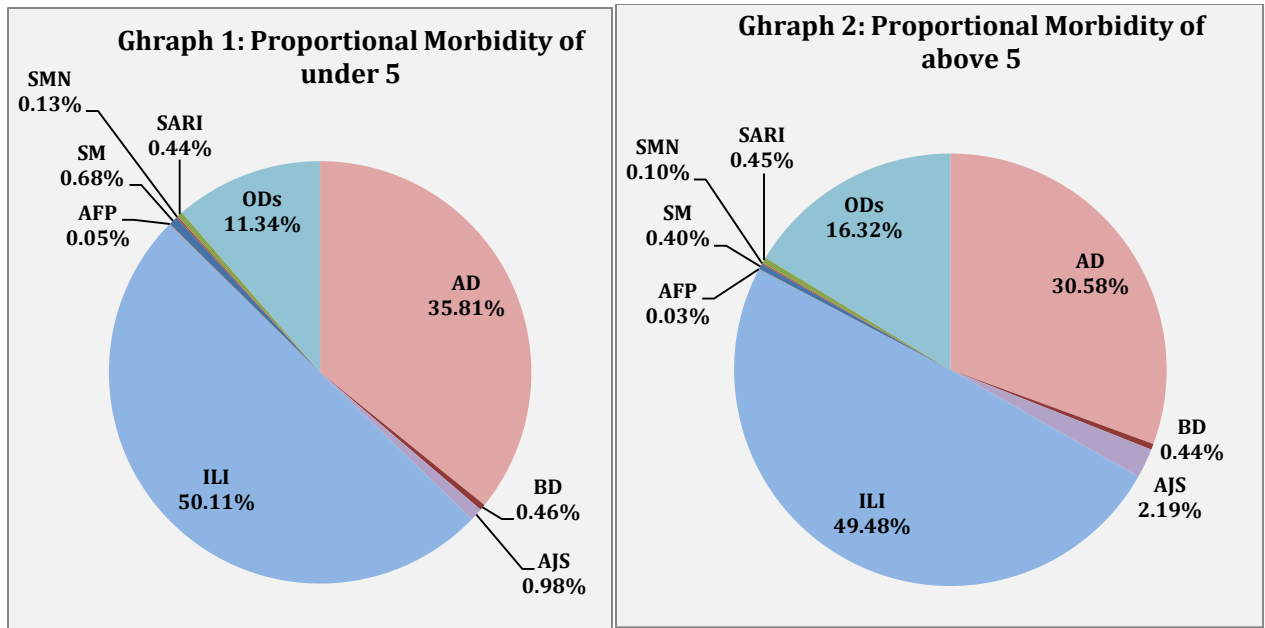
❖ Completeness& Timeliness of Reporting

- ❖ The overall completeness of reporting was 81%, (917 out of total 1129EWARS sentinel sites), (14) Governorates have reported this week; Timeliness of reporting was 88%.



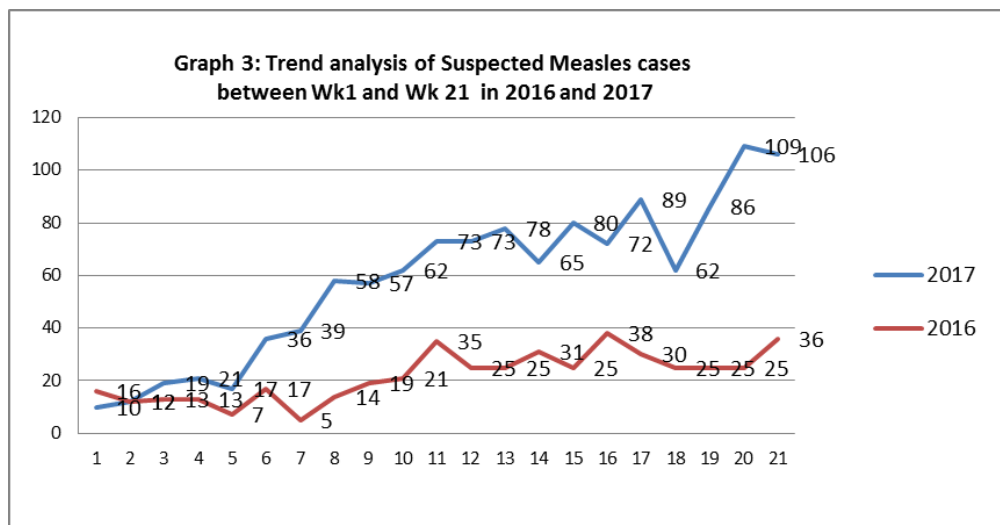
❖ The Morbidity Cases

- ❖ Out of the 286,759 total consultations, a total of 20,071 EWARS notifiable cases were reported; of which 9,990 cases were Influenza like Illness (50%), 6,620 cases were Acute Diarrhoea (33%), 328 cases of AJS, 90 cases of Sever Acute Respiratory Infection, 106 cases of Suspected Measles, 90 cases of Bloody Diarrhoea, 23 cases of Suspected Meningitis, and 8 cases of Acute Flaccid Paralysis.
- ❖ Graphs 1 and 2 below show the proportional morbidity among < 5 and ≥ 5 year age groups respectively.

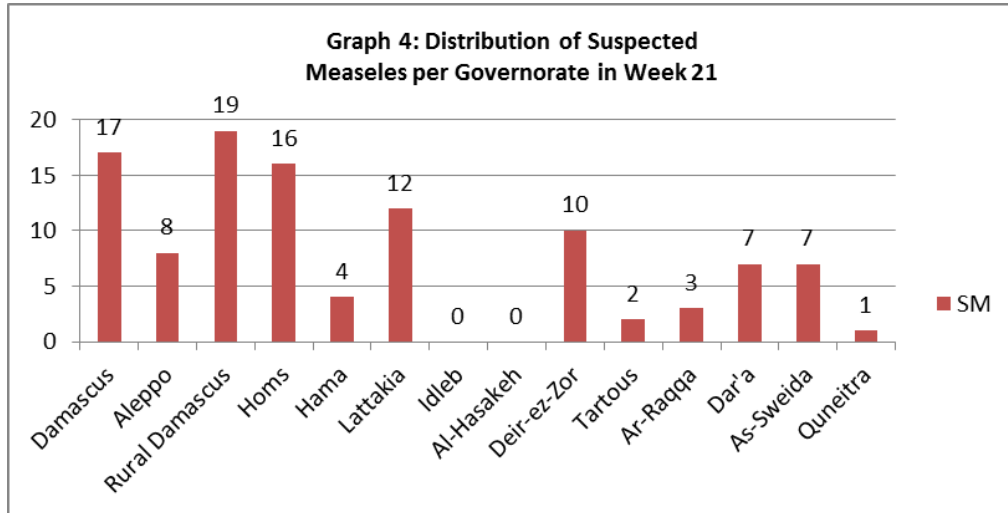


- ❖ AD constitutes (35.81%) among < 5 and (30.58%) among ≥ 5, while ILI constitutes (50.11%) of the cases among <5 and (49.58%) among ≥ 5.
- ❖ 50% of the cases were distributed among males, 54% of the cases were distributed among ≥5 age group. In total 2,816 cases were reported as “other diseases”. The most important diseases reported within this group were; 494 cases of Leishmaniasis (most of which were reported from Idleb 57%, Hama 20%), 188 cases of Typhoid (most of which were reported from DierEzor 32%, Idlib 28%, Hama 13%, and Rural Damascus 11%), 237 cases of Brucellosis, 26 cases of Mumps, 35 cases of Pertussis, and 16 cases of TB.

Graph 3 shows the trend analysis of suspected Measles cases reported between week 1 and week 21 of 2016 and 2017. It shows a slight decrease in reported SM cases for this week.



Graph 4 shows the distribution of Suspected Measles cases per governorates reported during week 21 of 2017.



Graph 5 shows the distribution of accumulative AFP cases between week 16 and week 21 of 2017.

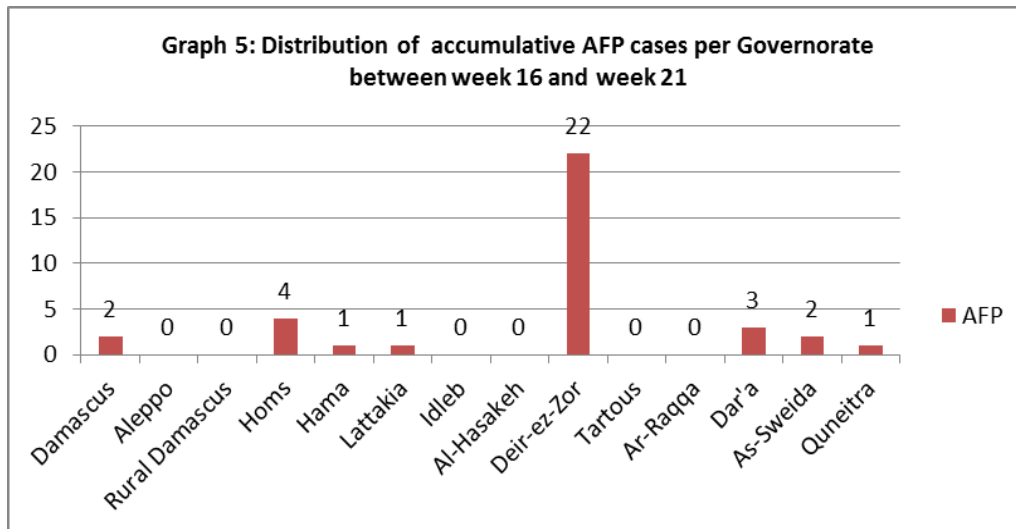


Table 1 shows a comparison between all notifiable cases in week 19 & week 20 in 2017.

Table 1: Comparison between reported cases between week 20 and week 21		
Disease	Week 20	Week 21
AD	5,800	6,620
BD	47	90
AWD	0	0
AJS	362	328
ILI	9,171	9,990
AFP	12	8
SM	109	106
SMN	34	23
TYF	253	188
PER	17	35
LSH	540	494
BRU	206	237
TB	19	16
SARI	100	90
CHP	424	638
SCA	422	383
LIC	656	629
Others	300	170
Mum	30	26

Water Borne Diseases:
 In line with the seasonality of water borne diseases, a slight increase in Acute Diarrhoea cases was reported for this week.

❖ The Response

Acute flaccid paralysis: The initial response for Syria is planned to be two immunization rounds of monovalent Oral Poliovirus Vaccine type2 (mOPV2), with first round within a week of receiving mOPV-2 from the global stockpile and the second within 2 weeks of the 1st round ; it is planned that Inactivated Polio Vaccine (IPV) will also be added to the second above round to rapidly increase immunity against PV2 in the youngest age cohorts, and to limit the risks associated with the limited use of type 2 containing vaccine.

Table-2: Distribution of cases per age group, and by Governorate-week- 21, 2017:

Code	Age Group	Idleb	Hassaka	Raqqa	Sweida	Qunaitra	Lattakia	Aleppo	Hama	Homs	Daraa	Damascus	DierEzor	Rural Damascus	Tartous	Grand Total
AD	< 5	258	25	49	200	53	365	549	127	141	166	744	233	260	146	3316
	≥ 5	291	55	148	170	44	237	508	233	149	187	689	294	233	66	3304
BD	< 5	14	0	1	8	0	10	1	1	0	2	8	0	3	0	48
	≥ 5	0	0	7	9	0	0	2	0	0	4	3	16	1	0	42
AWD	< 5	0	0	0	0	0	0	0	0	0	0	0	0	0	0	0
	≥ 5	0	0	0	0	0	0	0	0	0	0	0	0	0	0	0
AJS	< 5	13	0	1	1	2	22	64	26	4	4	61	18	15	7	238
	≥ 5	9	0	5	1	1	4	15	7	2	1	5	21	18	1	90
ILI	< 5	117	59	4	191	306	1141	613	98	208	288	768	267	575	731	5366
	≥ 5	118	88	6	147	128	1314	631	137	187	162	515	348	399	444	4624
AFP	< 5	0	0	0	0	0	0	0	0	3	0	0	0	0	0	3
	≥ 5	0	0	0	0	0	0	0	0	0	0	0	5	0	0	5
SM	< 5	0	0	1	6	0	2	0	4	5	4	5	4	12	0	43
	≥ 5	0	0	2	1	1	10	8	0	11	3	12	6	7	2	63
SMN	< 5	0	0	0	0	0	0	0	5	0	0	5	0	1	0	11
	≥ 5	0	0	3	0	0	1	0	3	0	0	3	0	2	0	12
SARI	< 5	0	0	1	28	0	7	0	9	0	0	3	0	0	1	49
	≥ 5	0	0	5	5	0	0	0	8	0	0	20	3	0	0	41
Other	< 5	219	0	32	9	36	89	145	49	176	34	65	114	65	13	1046
	≥ 5	417	8	37	21	35	91	234	211	150	59	201	127	165	14	1770
Total Sum of < 5		621	84	89	443	397	1636	1372	319	537	498	1659	636	931	898	10120
Total Sum of ≥ 5		835	151	213	354	209	1657	1398	599	499	416	1448	820	825	527	9951
Total		1456	235	302	797	606	3293	2770	918	1036	914	3107	1456	1756	1425	20071