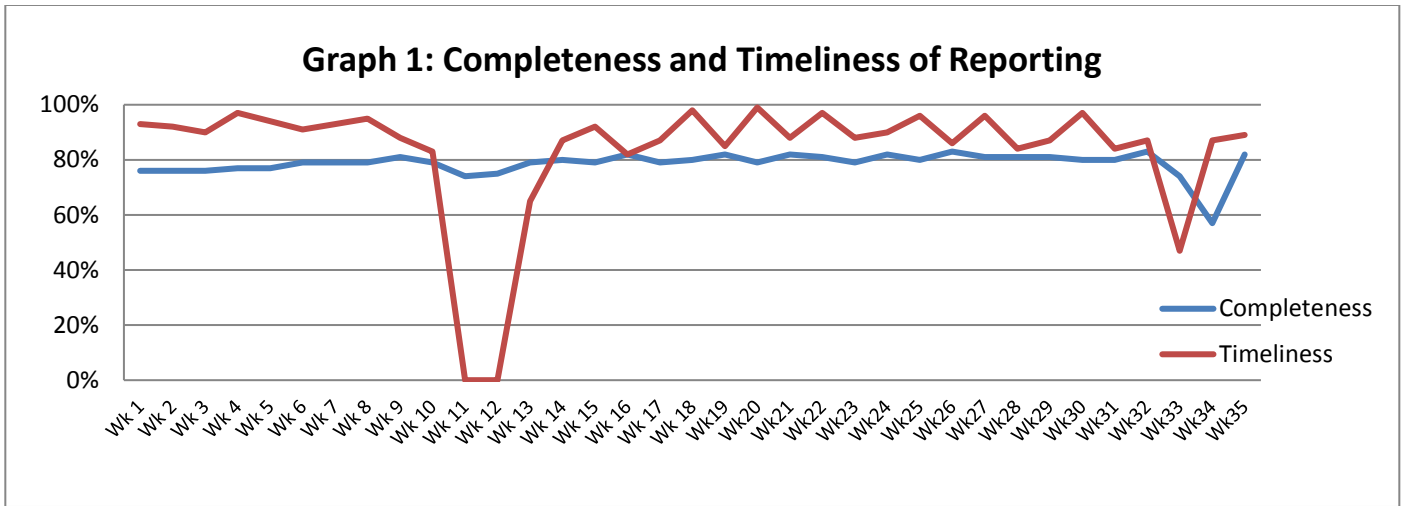


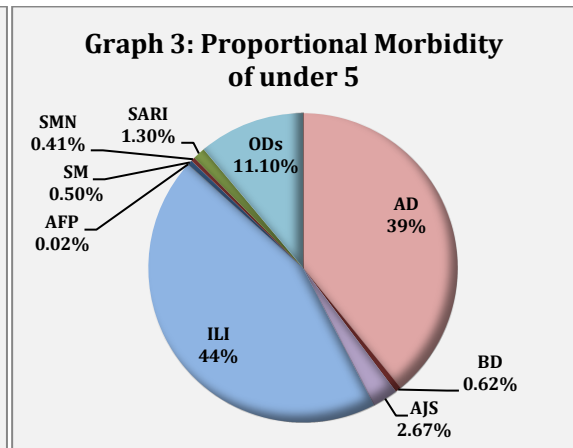
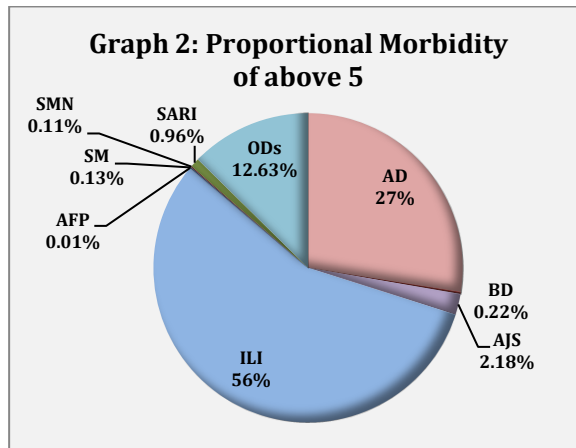
Highlights:

- ❖ 72 suspected Measles reported mainly from Deir Ezzor, Hassakeh and Raqqa.
- ❖ WHO has received reports of 300 cases of acute diarrhea, fever, and vomiting from the areas of eastern rural Raqqa.
- ❖ **Completeness & Timeliness of Reporting**
 - ❖ The overall completeness of reporting was 82 %; (1039 out of total 1265 EWARS sentinel sites). 14 governorates have reported this week.
 - ❖ Timeliness of reporting was 89%.

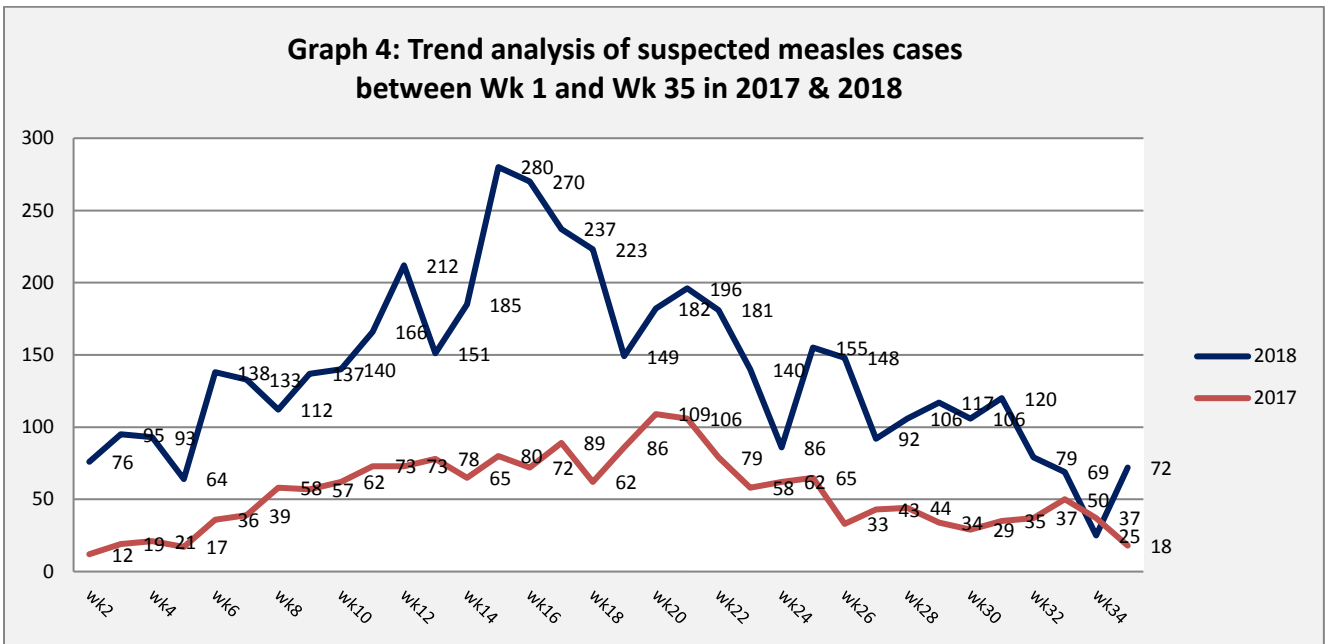


The Morbidity Cases

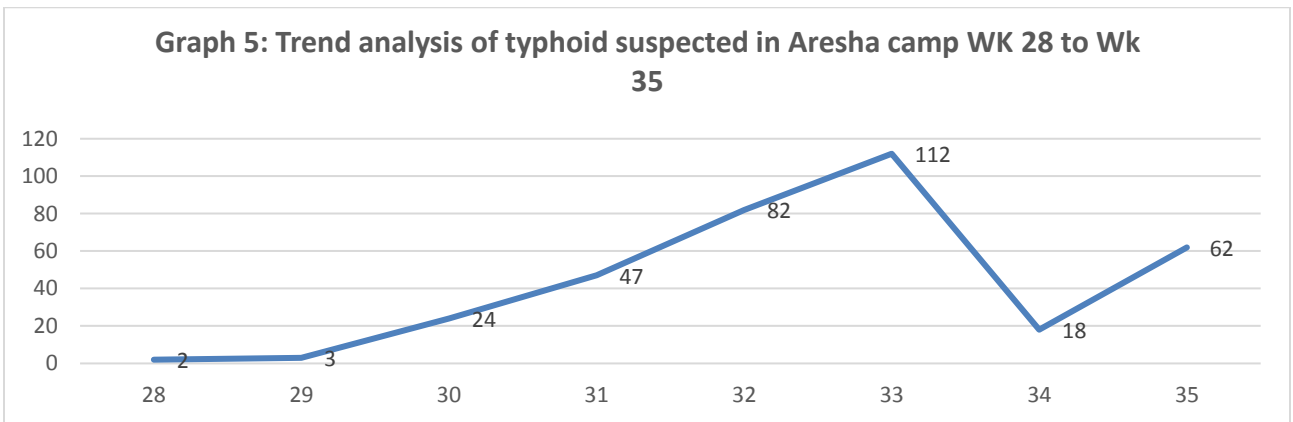
- ❖ Out of a total of 286,020 consultations, 26,773 EWARS notifiable cases were reported; of which 13,837 cases were influenza like illness (51%), 8,550 cases were acute diarrhoea (31%), 634 were acute jaundice syndrome, 291 were severe acute respiratory infection, 72 were suspected measles, 100 were bloody diarrhoea, and 60 were suspected meningitis.
- ❖ Graphs 2 and 3 below show the proportional morbidity among < 5 and ≥ 5 year age groups respectively.



- ❖ 54% of the cases were distributed among males. 62% of the cases were distributed among ≥ 5 age group.
- ❖ Acute diarrhoea constitutes (39%) among < 5 and (27%) among ≥ 5 , while influenza-like illness constitutes (44%) of the cases among < 5 and (56%) among ≥ 5 .
- ❖ In total 3,225 cases were reported as “other diseases”. The most important diseases reported within this group were; 578 cases of leishmaniasis (mostly from Aleppo, Idleb and Deir Ezzor), 379 cases of brucellosis, 440 cases of typhoid, 20 cases of tuberculosis, 92 pertussis, and 30 mumps.
- ❖ Graph4: shows the trend analysis of suspected Measles in 2018, the graph shows decrease in reported cases in week 34 due to the Eid Adha holiday.



Graph 5: Trend analysis of suspected typhoid cases in Aresha camp. The graph indicates a decline in the number of cases in week 34 during the Eid Adha holiday.



- ❖ Table 1 shows comparison between reported cases in week-34 and week-35 2018. The table shows an increase reported cases in week 35.

Table 1: Comparison between reported cases for week 34 and week 35 in 2018.

Disease	Week 34	Week 35
AD	5,636	8,550
BD	77	100
AWD	0	0
AJS	383	634
ILI	5,821	13,837
AFP	0	4
SM	25	72
SMN	41	60
SARI	150	291
TYF	304	440
PER	58	92
LSH	349	578
BRU	216	379
TB	4	20
SCA	355	484
LIC	297	499
CHP	410	327
MUM	33	30
Others	311	376
Total	14472	26773

❖ The Response

Measles

Coordination between, MOH, WHO, UNICEF and MOE, is going on to conduct the second phase of the subnational campaign from 16 to 27 September 2018, this campaign will school children (from 6 year–under 12) across the 7 governorates (Al-Hassakeh, Deir Ezzor , Ar-Raqqa, Aleppo, rural Damascus, Homs, Hama). The total number of targeted children is 1,452,293.

Suspected typhoid, Aresha camp, Al Hassakeh:

(345) suspected cases were reported since week 30; in week 35 the number of cases was (62). A field investigation visit was conducted by WHO team to test the quality of drinking water in Aresha camp. The water quality tests by using ATP equipment showed that Jerry cans of drinking water should be replaced. WHO has started implementing a raising awareness campaign of water borne diseases by deployment of 4 health education teams to provide health education sessions on the mean prevention measures about the principles of personal hygiene and the need to adhere to strict hygiene when preparing and handling food, in addition to provide health education for patients and to emphasis on hands washing after defecation and before preparation food. The campaign will be implemented in 5 IDPs camps in Hassakeh.

Cases of diarrhea, vomiting, fever in eastern rural areas of Raqqa:

300 cases of diarrhea, vomiting, fever were reported from three locations in the eastern rural of Raqqa the governorate (Sabkha, Maadan, Ghanem Alaali), the rapid response team of DoH conducted field visit to the locations. Water samples were collected from 11 different source of drinking water, the results showed no contamination in drinking water. The RRT also collected some food samples from local market and were sent to food safety lab, the results have not received yet.

Acute bloody Diarrhea in Deir Ezzor

As of 1 September 2018, 732 cases, including 12 deaths, of acute diarrhea in Deir Ezzor Governorate have been reported since week 10. WHO and UNICEF are implementing a campaign for distributing aqua-tablets and raising the awareness of approximately 20,000 households in 20 villages located in the eastern bank of Euphrates River in Deir Ezzor. During weeks 33, 34, and 35, 17,774 households were provided with aqua-tablets and health education. In addition, health education sessions were also provided in mosques. The outreach teams have conducted also active surveillance for Diarrhea cases and visited physicians and pharmacists. WHO and UNICEF are planning to expand the targeted areas in Al-Mayadin district and to implement the campaign in 16 villages along Euphrates River.

Table-2: Distribution of cases per age group, and by Governorate-week-35, 2018:

Code	age group	Idleb	Hassaka	Raqqa	Sweida	Qunaitra	Lattakia	Aleppo	Hama	Homs	Daraa	Damascus	DierEzor	Rural Damascus	Tartous	Grand Total
AD	< 5	137	195	65	142	85	482	677	163	108	146	612	939	467	329	4,547
	≥ 5	137	202	108	160	89	371	614	243	147	128	484	868	316	136	4,003
BD	< 5	0	14	6	8	0	2	1	0	2	0	4	0	0	0	37
	≥ 5	0	22	9	5	0	0	1	0	0	0	1	24	0	1	63
AWD	< 5	0	0	0	0	0	0	0	0	0	0	0	0	0	0	0
	≥ 5	0	0	0	0	0	0	0	0	0	0	0	0	0	0	0
AJS	< 5	4	39	40	26	4	17	45	42	18	16	38	54	12	6	361
	≥ 5	2	24	64	6	0	3	21	10	4	7	8	117	7	0	273
ILI	< 5	1	2,266	22	233	522	1,112	1,125	45	110	433	590	745	1,000	1,105	9,309
	≥ 5	5	125	18	182	162	962	661	101	93	194	317	725	659	324	4,528
AFP	< 5	0	0	0	0	0	0	0	1	0	0	1	0	0	0	2
	≥ 5	0	0	0	0	0	0	0	1	0	0	1	0	0	0	2
SM	< 5	0	6	3	0	0	0	0	1	1	0	0	10	0	0	21
	≥ 5	0	8	5	0	0	0	0	0	3	0	3	31	1	0	51
SMN	< 5	0	2	2	2	0	0	2	4	1	0	1	3	1	0	18
	≥ 5	0	0	4	3	0	2	0	2	0	0	1	30	0	0	42
SARI	< 5	0	40	16	7	0	16	6	1	0	0	36	33	0	3	158
	≥ 5	0	71	13	1	0	1	1	1	0	0	11	29	0	5	133
Others	< 5	256	220	62	18	24	50	305	165	54	54	47	719	111	4	2,089
	≥ 5	414	86	17	9	2	21	117	22	46	5	11	365	17	4	1,136
Total Sum of < 5		398	2,782	216	436	635	1,679	2,161	422	294	649	1,329	2,503	1,591	1,447	16,542
Total Sum of ≥ 5		558	538	238	366	253	1,360	1,415	380	293	334	837	2,189	1,000	470	10,231
Total		956	3,320	454	802	888	3,039	3,576	802	587	983	2,166	4,692	2,591	1,917	26,773