

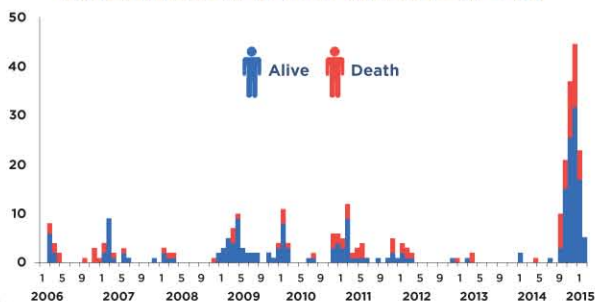
AVIAN INFLUENZA A(H5N1) SITUATION UPDATE

30 APRIL 2015 EGYPT

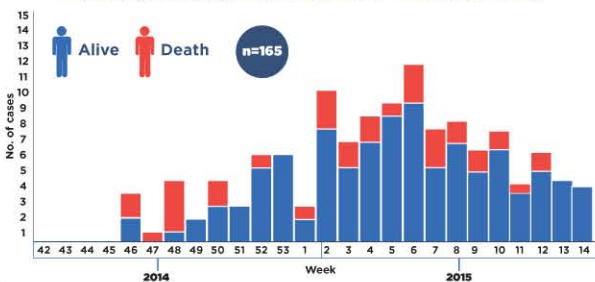
HIGHLIGHTS

- A total of 342 human cases of avian influenza A(H5N1) were reported in Egypt between March 2006 to 30 April 2015. Of these cases, 115 were fatal (CFR: 33.6%). The country is experiencing a surge of human cases since November 2014. A total of 165 cases including 48 deaths(CFR: 29%) were reported between 01 November 2014 to 30 April 2015. Cases have been reported from 21 out of 29 governorates in the country.
- Amongst cases reported during the recent surge, females (60%) comprised of majority of cases and reported a higher death rate (30%) compared to males (27%), while children in the under five years age group (29%) and those in the age group of 30 to 45 years (30%) were most at risk of acquiring the infection. However, children in the under 5 years age group had the lowest case fatality rate(6%).
- There is significant variation in the death rate between those who received antiviral treatment within 48 hours compared to those who received treatment after 48 hours (17% versus 35%)

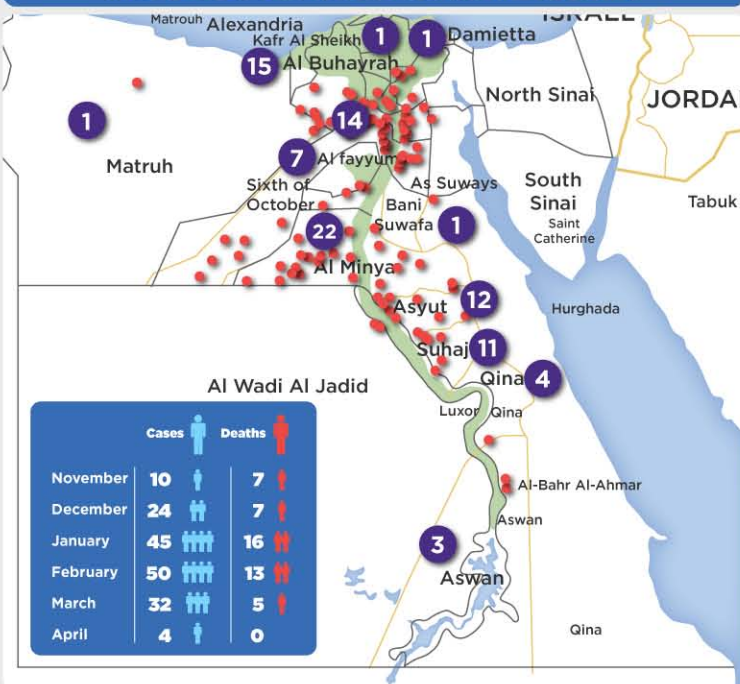
REPORTED HUMAN CASES OF AVIAN INFLUENZA A (H5N1) IN EGYPT, 2006- APR 2015 (n=342)



DISTRIBUTION OF H5N1 CASES BY WEEK OF ONSET, EGYPT, 2014-2015 (UP TO 30 APRIL)



DISTRIBUTION OF H5N1 CASES BY GOVERNORATE OF RESIDENCE, EGYPT, 2014-2015 (UP TO 30 APRIL)



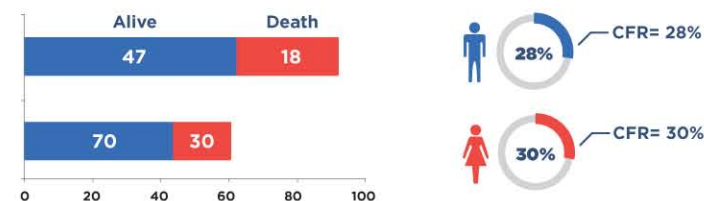
CFR BY AGE GROUP AND GENDER, EGYPT 2014-2015 (UP TO 30 APRIL)

Age Group	Gender	Total cases	Death	Gender specific CFR	Age specific CFR
≤ 5	Male	21	3	14%	6%
	Female	26	0	0%	
> 5 - 15	Male	11	4	36%	25%
	Female	5	0	0%	
> 15 - 30	Male	8	2	25%	38%
	Female	21	9	43%	
> 30 - 45	Male	17	6	35%	39%
	Female	37	15	40%	
> 45	Male	8	3	38%	47%
	Female	11	6	55%	

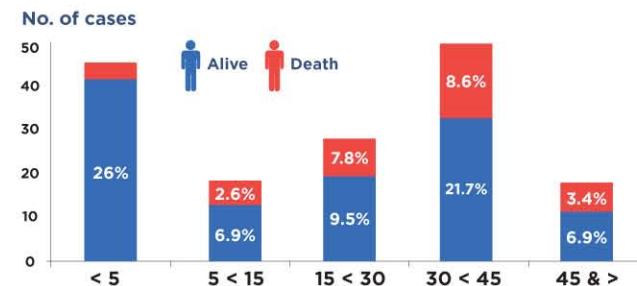
SUMMARY



DISTRIBUTION OF H5N1 CASES BY GENDER, EGYPT, 2014-2015 (UP TO 30 APRIL)



DISTRIBUTION OF H5N1 CASES BY AGE GROUP, EGYPT NOVEMBER 2014 - 2015 (UP TO 30 APRIL)



OUTCOME OF PATIENT BY TIME INTERVAL BETWEEN DATE OF ILLNESS ONSET AND DATE OF START OF ANTIVIRAL TREATMENT

