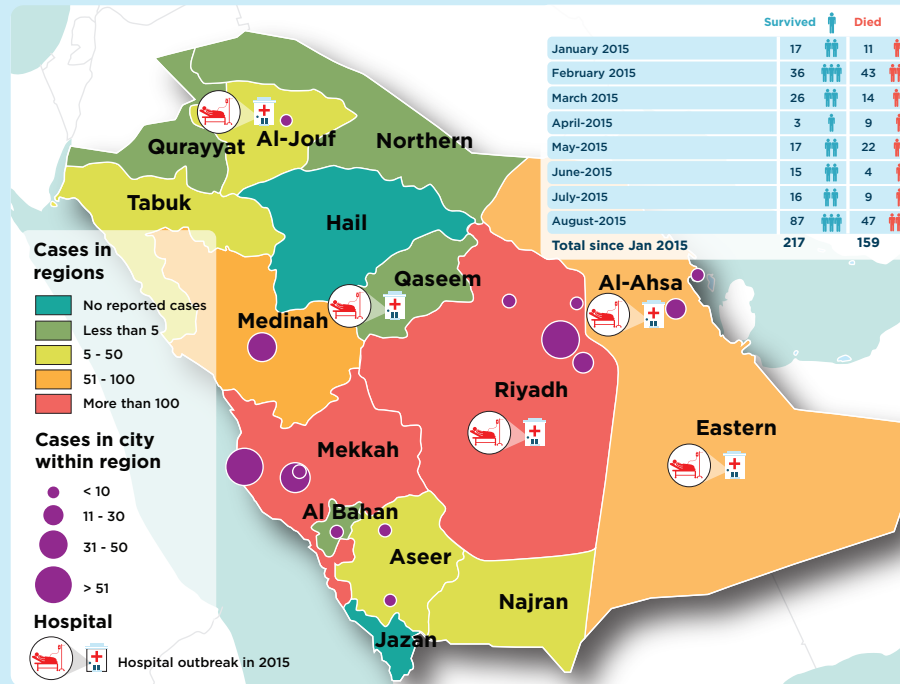


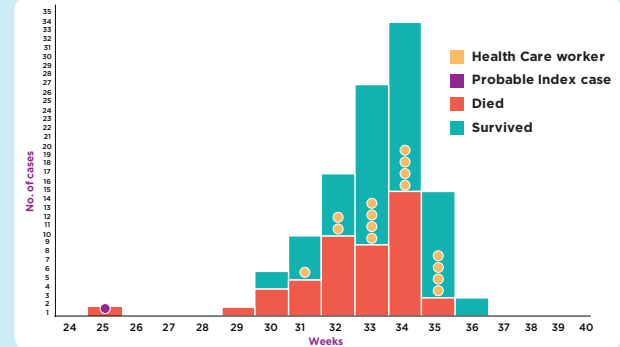
### HIGHLIGHTS

- A total of 397 laboratory-confirmed cases of Middle East Respiratory Syndrome Coronavirus (MERS-CoV) including 158 deaths (CFR: 39%) were reported from the countries of WHO Eastern Mediterranean Region between 01 January to 31 August 2015. Majority of the cases were reported from Saudi Arabia (376 cases) followed by United Arab Emirates (7 cases), Jordan (6 cases), Qatar (4 cases), Oman (3 cases) and one case from the Islamic Republic of Iran. In the month of August, a sudden surge in the number of cases have been reported from Saudi Arabia (134 cases including 47 deaths).
- Compared to 2014, there has not been any substantial increase in number of reported cases and the age characteristics of the cases reported in 2015 do not show any significant difference when compared with age characteristics of cases reported from 2012 to 2014 during the same corresponding period;
- The age group of 50-59 years continue to be main risk group for acquiring infection for primary cases, while the risk group for secondary cases is observed to be 30-39 years. Majority of deaths amongst the secondary cases have been seen to have occurred in the age group of 50-59 and 70-79 years.
- Compared to 2014, although the cases have not registered a significant increase, hospital outbreaks continue to be reported from Saudi Arabia and remain a major concern. Since the epidemiological week no. 25, a nosocomial outbreak involving one hospital in Riyadh city. A total of 108 laboratory confirmed cases of MERS-V including 42 deaths (CFR: 39%) were linked to this outbreak.

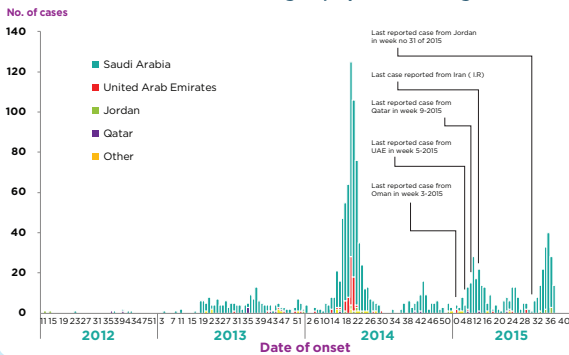
### MERS-CoV cases in Saudi Arabia 2012- August 2015



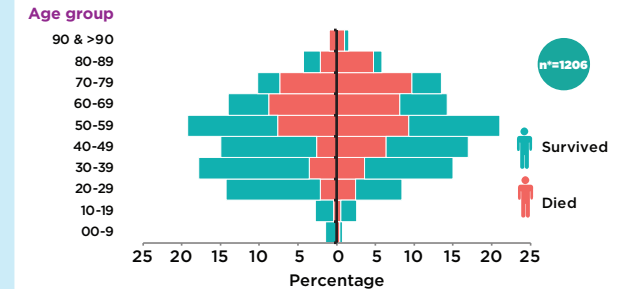
### MERS-CoV reported cases related to NGH outbreak, weeks 24 to 36



### Epidemic curve of MERS-CoV cases reported from the Eastern Mediterranean Region, April 2012- August 2015



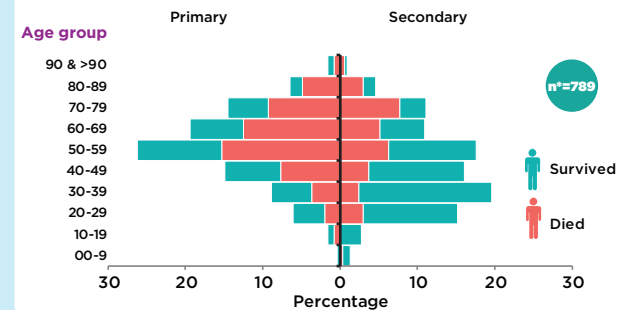
### Age and gender distribution of reported MERS-CoV from Saudi Arabia, 2012-2015



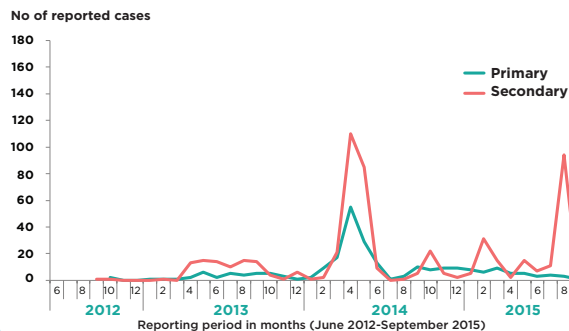
### Epidemiological characteristics of MERS-CoV cases reported between Jan-Sep in 2013, 2014 and 2015 in Saudi Arabia

| Characteristic              | Jan-Sep 2013 | Jan-Sep 2014 | Jan-Sep 2015 |
|-----------------------------|--------------|--------------|--------------|
| Number                      | 129          | 593          | 377          |
| Median age in years         | 50           | 48           | 56           |
| Gender (% male)             | 60           | 62           | 69           |
| % of primary cases          | 21           | 23           | 12           |
| % of secondary cases        | 64           | 39           | 42           |
| (%) unknown contact history | 15           | 35           | 21           |
| % HCW                       | 19           | 28           | 12           |
| % Fatal                     | 49           | 40           | 41           |

### Age and fatality distribution of primary and secondary reported MERS-CoV cases, Saudi Arabia, 2012-2015



### Reported MERS-CoV from Saudi Arabia by week of onset, 2012-2015



### Reported MERS-CoV cases from Saudi Arabia by outcome, 2012-2015

| Year     | 2012 | 2013 | 2014 | 2015 | Grand Total |
|----------|------|------|------|------|-------------|
| Died     | 3    | 82   | 273  | 154  | 512         |
| Survived | 2    | 78   | 391  | 223  | 694         |
| CFR(%)   | 60   | 51   | 41   | 41   | 42          |