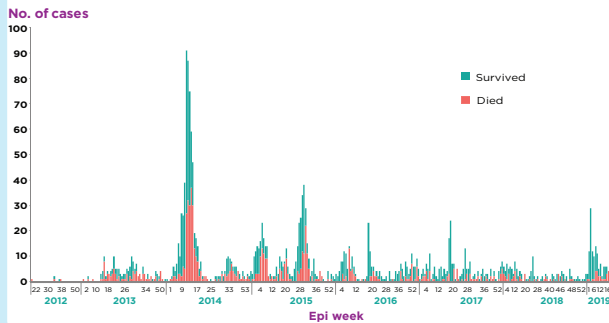


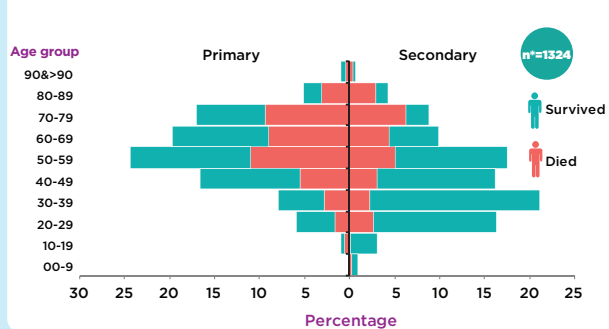
HIGHLIGHTS

- At the end of April 2019, a total of 2428 laboratory-confirmed cases of Middle East respiratory syndrome (MERS), including 838 associated deaths (case-fatality rate: 34.5%) were reported globally; the majority of these cases were reported from Saudi Arabia (2037 cases, including 760 related deaths with a case-fatality rate of 37.3%). During the month of April, a total of 29 laboratory-confirmed cases of MERS were reported globally. All the 29 cases were reported from Saudi Arabia with 11 associated deaths.
- This month, Saudi Arabia has not reported any new cases related to the Wadi Aldwaser city outbreak. The outbreak has presumed to have stopped due to the effective response measures taken by Saudi Arabia. The country reported a new outbreak this month, in Al-Khafji city and one of its hospitals with 13 reported cases and 6 associated deaths. The cases are linked to two clusters: the first cluster has 10 cases (and 3 deaths) including 5 health care workers that contracted the infection in the hospital (with 1 death), three hospital acquired cases (with 2 deaths) and one household contact.
- The demographic and epidemiological characteristics of reported cases, when compared during the same corresponding period of 2013 to 2019, do not show any significant difference or change, except for the increase in the number of secondary cases and healthcare worker cases due to the current hospital outbreak.
- The age group 50-59 years continues to be at highest risk for acquiring infection of primary cases. The age group 30-39 years is most at risk for secondary cases. The number of deaths is higher in the age group 50-59 years for primary cases and 70-79 years for secondary cases.

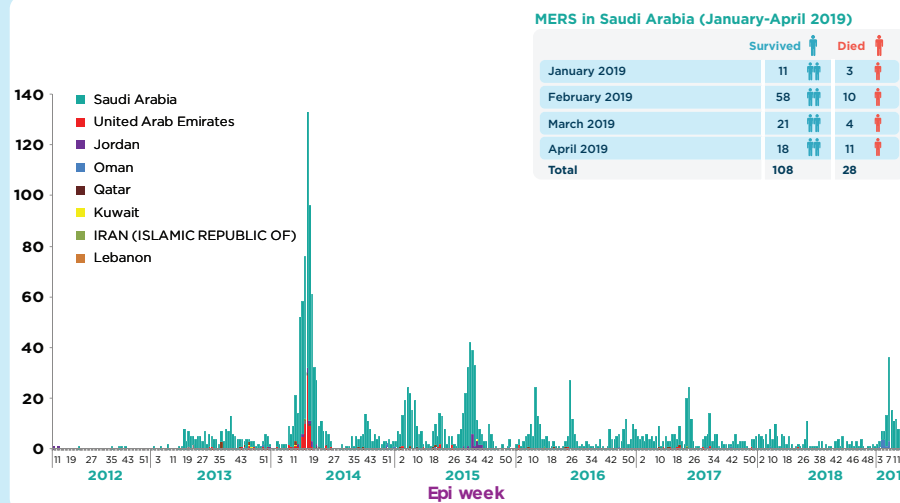
MERS cases reported from the Kingdom of Saudi Arabia by week of symptoms onset, June 2012-April 2019



Age and fatality distribution of Primary and Secondary cases of MERS reported from Saudi Arabia, 2012-April 2019



Laboratory-confirmed cases of MERS reported in Eastern Mediterranean Region, April 2012-April 2019



MERS in Saudi Arabia (January-April 2019)

	Survived	Died
January 2019	11	3
February 2019	58	10
March 2019	21	4
April 2019	18	11
Total	108	28

SUMMARY

2428 Laboratory-confirmed cases reported since April 2012

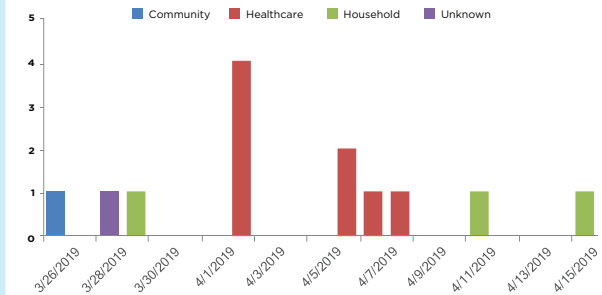
838 deaths reported since April 2012

27 countries reported cases globally

12 countries reported cases since April 2012 in the Eastern Mediterranean Region

13 laboratory-confirmed cases reported linked to an outbreak in Saudi Arabia in April

Date of onset of symptoms by place of infection, Al-Khafji 2019



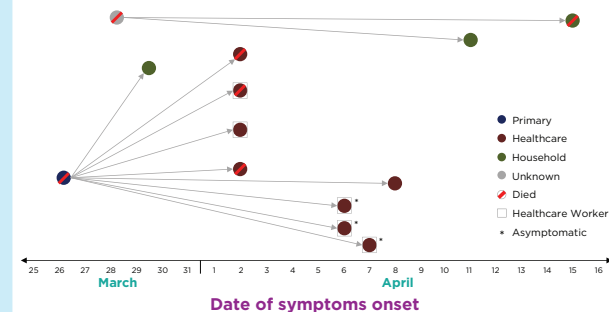
Epidemiological characteristics of MERS cases reported globally between November-April 2013 and November-April 2019

Characteristic	Nov 13-Apr 14	Nov 14-Apr 15	Nov 15-Apr 16	Nov 16-Apr 17	Nov 17-Apr 18	Nov 18-Apr 19
Number	477	199	112	132	100	160
Median age in years	48	55	55	56	56	51
Gender (% male)	66	77	81	78	75	77
% of primary cases	19	26	29	41	31	27
% of secondary cases	38	31	27	17	15	52
(%) of unknown contact history	37	41	4	5	0	0
% of HCW	29	11	10	6	4	13
% of Fatal	42	48	34	30	38	21

Characteristics of MERS cases reported from Kingdom of Saudi Arabia, June 2012-April 2019

Type of case	2012	2013	2014	2015	2016	2017	2018	2019	Grand Total
Primary	3	36	164	52	74	71	54	35	489
Secondary	2	93	264	222	60	90	35	69	835
Missing		1	15	102	103	68	52	30	371
Unknown		28	219	78	11	5	1		342
Total	5	158	662	454	248	234	142	134	2037

Transmission chain of MERS cases cluster, Al-Khafji, Saudi Arabia 2019 up to 17 April*



* The transmission chain is built upon the available information so far. The chain might be updated/modified based on the results of further investigations.