

Earthquake in Paktika and Khost Provinces, Afghanistan

Earthquake Situation Report Update: I

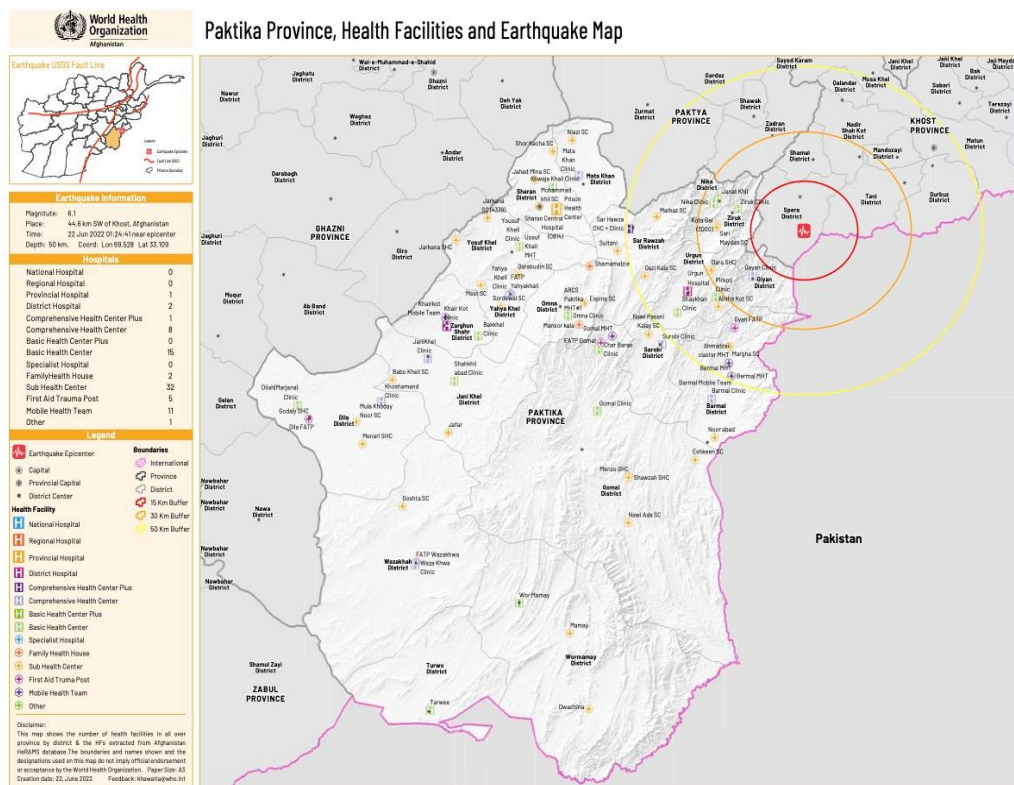
22 June 2022 (As of 16:15)

- **Event:** At local time, 22 June 2022, 6.1 magnitude earthquake struck the South East Region of Afghanistan impacting Paktika and Khost provinces. Giyan, Barmal and Zerok districts of Paktika province, and Spera districts of Khost province affected.

- **Impact:** Reports indicate that more than 414 deaths (Giyan: 222; Barmal: 165 Zerok: 2 is known yet) and 500 injured (Giyan: 300; Barmal: 100 is known yet) in Paktika, and 25 deaths and 100 injured in Spera district of Khost province. The number of casualties is expected to rise as search and rescue operations are ongoing.

Reportedly there are 1,800 houses and almost 70% of houses damaged/destroyed. In Paktika province, 37 injured admitted in Urgun District Hospital, 50 in Sharana Provincial Hospital and 20 injured cases were referred to Paktya Regional Hospital. In Khost province, six injured people provided with medical support in Khost Provincial Hospital and discharged. In Paktika province, Giyan Comprehensive Health Center (CHC), and in Khost Sepera CHC partially damaged.

Referral health facilities: In Paktika, injured cases are admitted in Urgun District Hospital, Sharana Provincial Hospital, and some referred to Paktya Regional Hospital. In Khost, Khost Provincial Hospital.



Health Response

- Health cluster mobilized health partners to send the ambulances, medical supplies and additional health workforce.
- Mass casualty management plans are activated in Sharana (OHPM/WHO), Ghazni (AADA/WHO) Provincial Hospitals and Paktya (AADA/WHO) Regional Hospitals.
- Health Cluster partners (OHPM, IMC, WHO, Health Net TPO, AADA, PU-AMI, UNICEF, CARE, IRC, RHDO and Cordaid) providing support in the affected areas.
 - In Paktika, WHO, OHPM, PU-AMI and CARE deployed 14 mobile health teams, and in Khost Health Net, OHPM and IRC deployed seven mobile health teams to affected area.
 - IMC has been providing lifesaving emergency medical services through First Aid Trauma Post (FATP). 475 injured received first aid services through IMC first aid trauma psot. Additionally, IMC mobilized three ambulance, and medical staff to Giyan district.
 - WHO regional office delivered 115 cartons of medical supplies to Paktika that included: Six IEHK basic medicine kits, two TESK-2019 kits, one TESK dressing materials kit and six boxes of gloves. Additionally, Trauma Management Officer and Health Emergency Regional Focal point from WHO country office have been sent to the region to support mass casualty management plans in the hospitals, and South East Health Emergency Focal Point was sent to Paktika. Beside this, a shipment of 9.8 tones and volume of 95 cubic meters of medicine and medical supplies from WHO country office in Kabul dispatched to the affected areas. The shipment includes 30 emergency health kits and 50 surgical health kits to support the health response. The shipment is expected to arrive this evening to Paktika.
 - AADA has sent a neurosurgeon, three physicians, three nurses, one lab technician and CDC officer to Paktika to support the response.
 - PU-AMI sent eight ambulances and two mobile health teams to Pakita to support the response.
 - Medical staff is sent from Ghazni and Paktika provincial hospitals to Paktika.



- UNICEF delivered 500 winter kits, 200 family kits, 100 hygiene kits, 20 blankets to Giyan and Barmal districts.
- Health Cluster partners sent 27 ambulances to the affected areas.

Current capacity

- Appropriate capacity in terms of supplies, medicine, and human responses both at pre-hospital and hospital care has been reported with additional support needed.
- Human resource capacity has been re-arranged and sent to the affected areas and hospitals for additional support.

Needs/gaps

- Additional surgical and pharmaceutical supplies are needed.
- Exact figures of casualties and houses/premises destruction are still not identified and yet to be confirmed.
- Integrated multi-sectoral response is needed from health, WASH, shelter, FSAC and nutrition clusters.
- Conduct multisectoral rapid needs assessment.

Next steps

- Conduct rapid needs assessment with engagement of key health partners.
- Based on needs assessment findings, develop the response and resource mobilization plan.