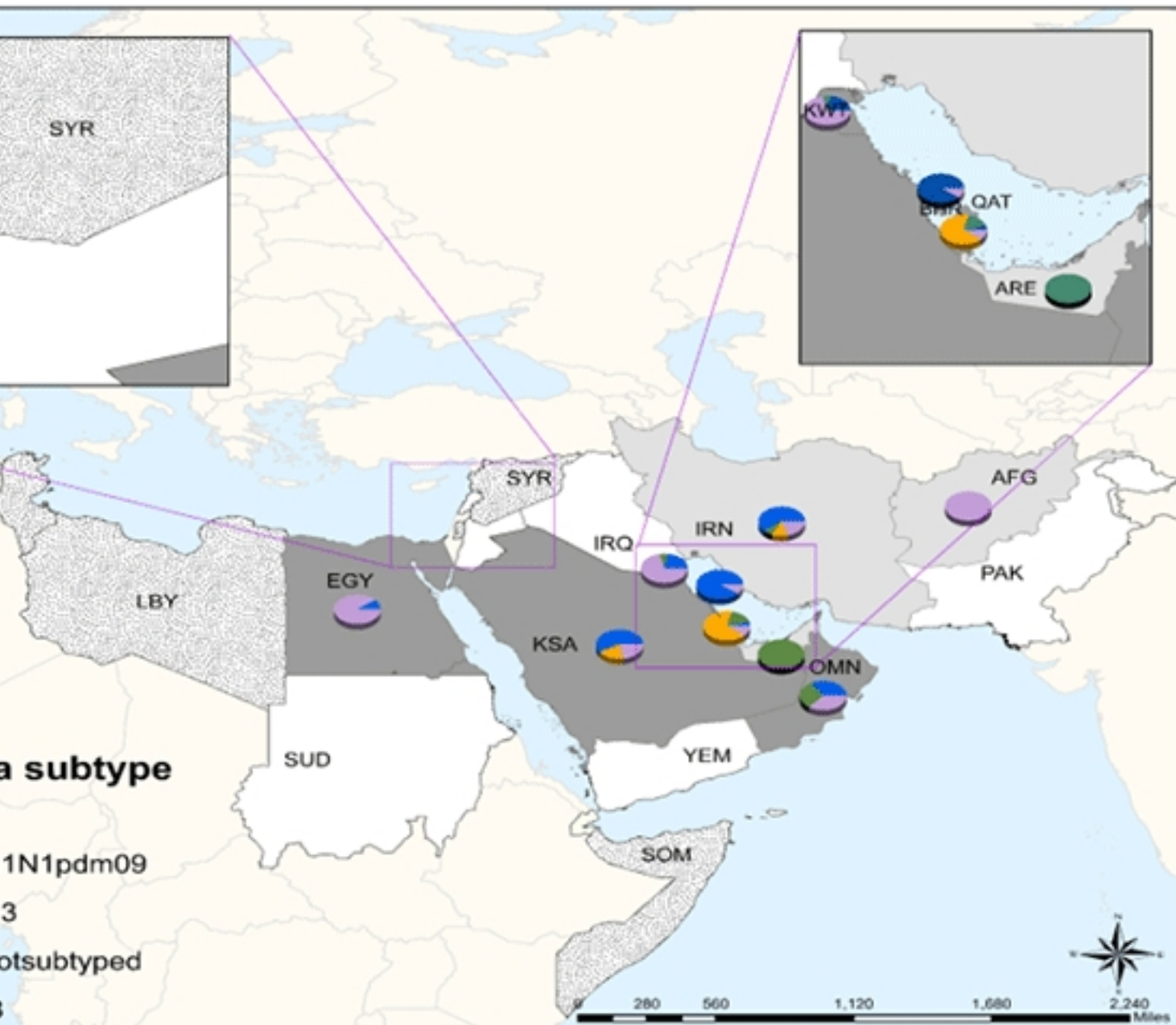


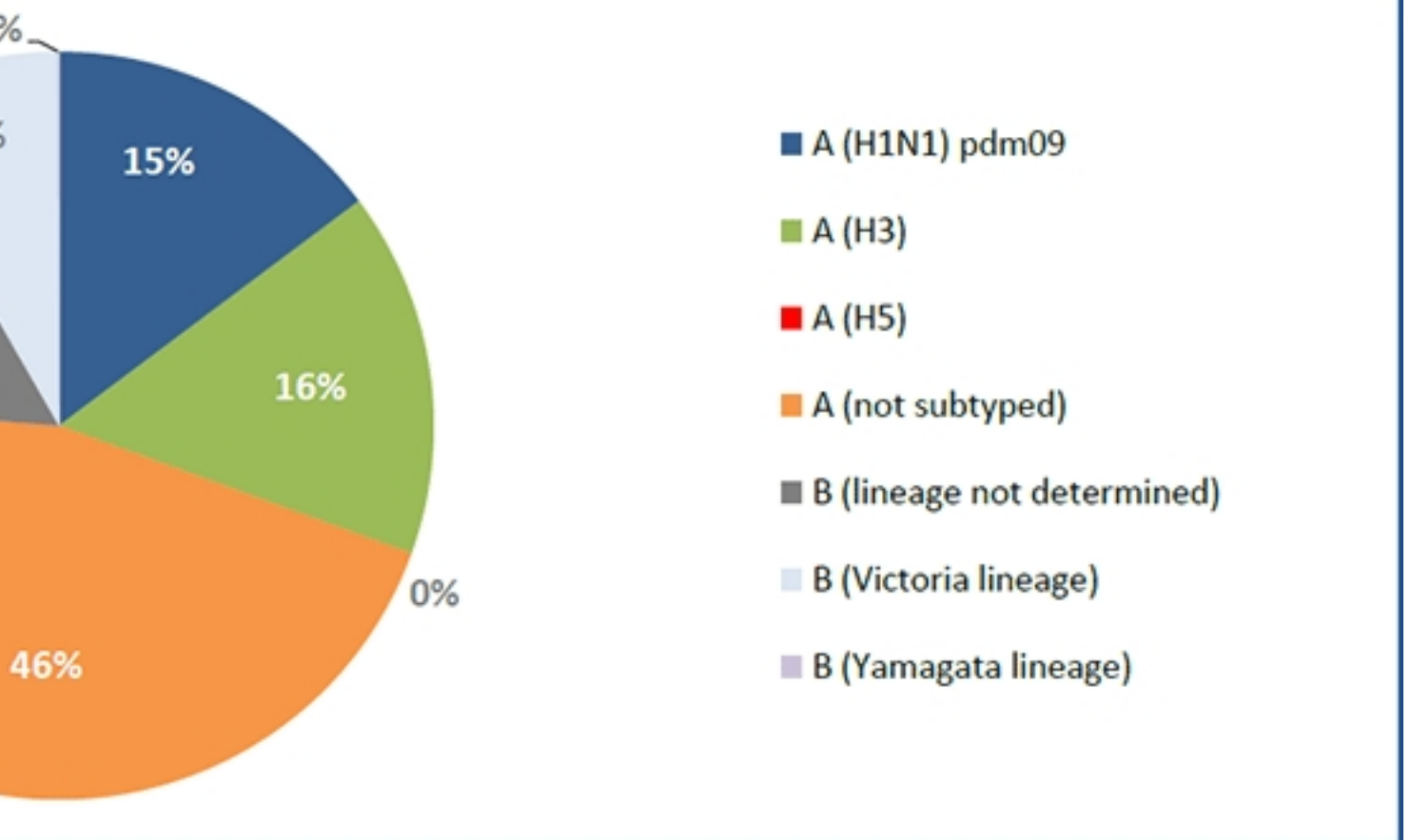
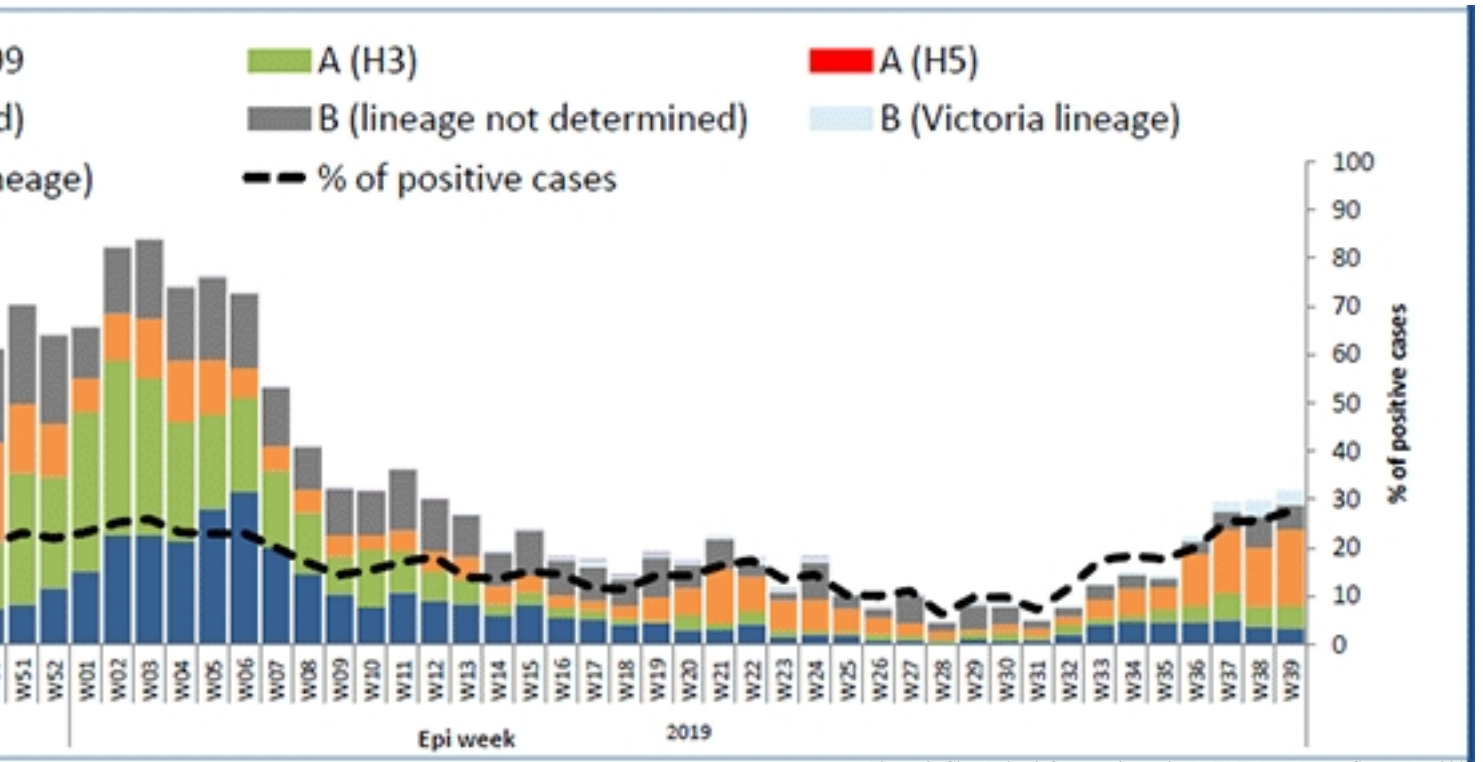
In the WHO Eastern Mediterranean Region, influenza activity continues to decrease in the month of September in many countries reporting data to FluNet and EMFLU namely, Afghanistan, Bahrain, Egypt, Iran (Islamic Republic of), Iraq, Jordan, Kuwait, Lebanon, Morocco, occupied Palestinian territory (oPt), Oman, Pakistan, Qatar, Saudi Arabia, Sudan, Syrian Arab Republic, Tunisia and United Arab Emirates.

In September 2019, Proportion of tested cases for influenza in EMR is 93.5% out of 5,974 enrolled cases, 24.7% of the tested cases is positive and 75.3% is negative.

Figure 1: Influenza geographic spread by type and subtypes, September 2019.



• In the Eastern Mediterranean Region, the 2010-2011 season of influenza A (H1N1pdm09) was characterized by the presence of multiple subtypes, with the H1N1pdm09 subtype being the most prevalent. The H1N1pdm09 subtype was the most prevalent in the Eastern Mediterranean Region, followed by the H3N2 subtype. The H3N2 subtype was the most prevalent in the Eastern Mediterranean Region, followed by the H1N1pdm09 subtype. The H3N2 subtype was the most prevalent in the Eastern Mediterranean Region, followed by the H1N1pdm09 subtype.



[Influenza 9th of May 2024 05:00:00 AM](#)