

WHO SUPPORT TO COVID-19 RESPONSE IN LEBANON



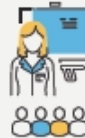
As part of the strategic preparedness and response plan for COVID-19, and in coordination with the Government of Lebanon, Ministry of Public Health and partners, WHO Lebanon has:



PROCURED PERSONAL PROTECTIVE EQUIPMENT

ensuring the protection of health staff since the start of the crisis

111 950 masks **3 140** face shields
1 644 050 gloves (pairs) **9 410** goggles
71 245 gowns and coveralls



STRENGTHENED HUMAN RESOURCE CAPACITY

creating a larger pool of qualified health professionals

12 staff recruited for MOPH
> 1 700 health and non-health staff trained on different topics including infection prevention and rapid response



INCREASED CLINICAL MANAGEMENT CAPACITY

through procuring

19 ventilators (7 delivered)
9 portable X Ray machines (5 delivered)



PROVIDED INFORMATION TO PUBLIC

- > 250 000** awareness material printed and disseminated
- 118 daily briefs** produced and disseminated, covering COVID-19 latest updates in Lebanon
- 39 interviews** conducted on COVID-19 in newspapers, radios and TV stations
- Provided technical feedback on >12 thematic audiovisual material related to COVID-19
- A campaign to combat misinformation** launched in collaboration with UNICEF and the Ministry of Information



STRENGTHENED LABORATORY TESTING

through procuring material sufficient for 2 000 tests per day for 84 days

87 440 tests (80 880 in the pipeline)
25 000 swabs with Viral Transport Medium (40 000 in the pipeline)
5 PCR machines



PROVIDED TECHNICAL SUPPORT

- 7+** technical guidance documents developed, including testing strategy, isolation sites, preparedness in prisons and mental health in quarantine.



PARTICIPATED IN THE GLOBAL SOLIDARITY TRIALS

- 4** hospitals in Lebanon are participating in the WHO-led clinical trials to assess the efficiency of different potential treatment regimens for COVID-19.

21 Feb - 31 May 2020 v.1



WHOLEbanon

WHO Lebanon acknowledges donors support to the COVID-19 response (in alphabetical order): the Central Emergency Response Fund (CERF), the Department for International Development (DFID), and the Government of the State of Kuwait.

Infographics

[COVID-19 response, 21 February- 30 August 2021](#)

[COVID-19 response, 21 February- 31 July 2021](#)

[COVID-19 response, 21 February- 30 June 2021](#)

[COVID-19 response, 21 February- 31 May 2021](#)

[COVID-19 response, 21 February-30 April 2021](#)

[COVID-19 response, 21 February-31 March 2021](#)

[COVID-19 response, 21 February-28 February 2021](#)

[COVID-19 response, 21 February-31 January 2021](#)

[COVID-19 response, 21 February-31 December](#)

[COVID-19 response, 21 February-30 November](#)

[COVID-19 response, 21 February-30 October](#)

[COVID-19 response, 21 February-30 September](#)

[COVID-19 response, 21 February-1 September](#)

[COVID-19 response, 21 February-31 July](#)

[COVID-19 response, 21 February-30 June](#)

COVID-19 response, 21 February-31 May

Friday 3rd of May 2024 10:32:33 AM