

Sudan Weekly AFP Surveillance Report

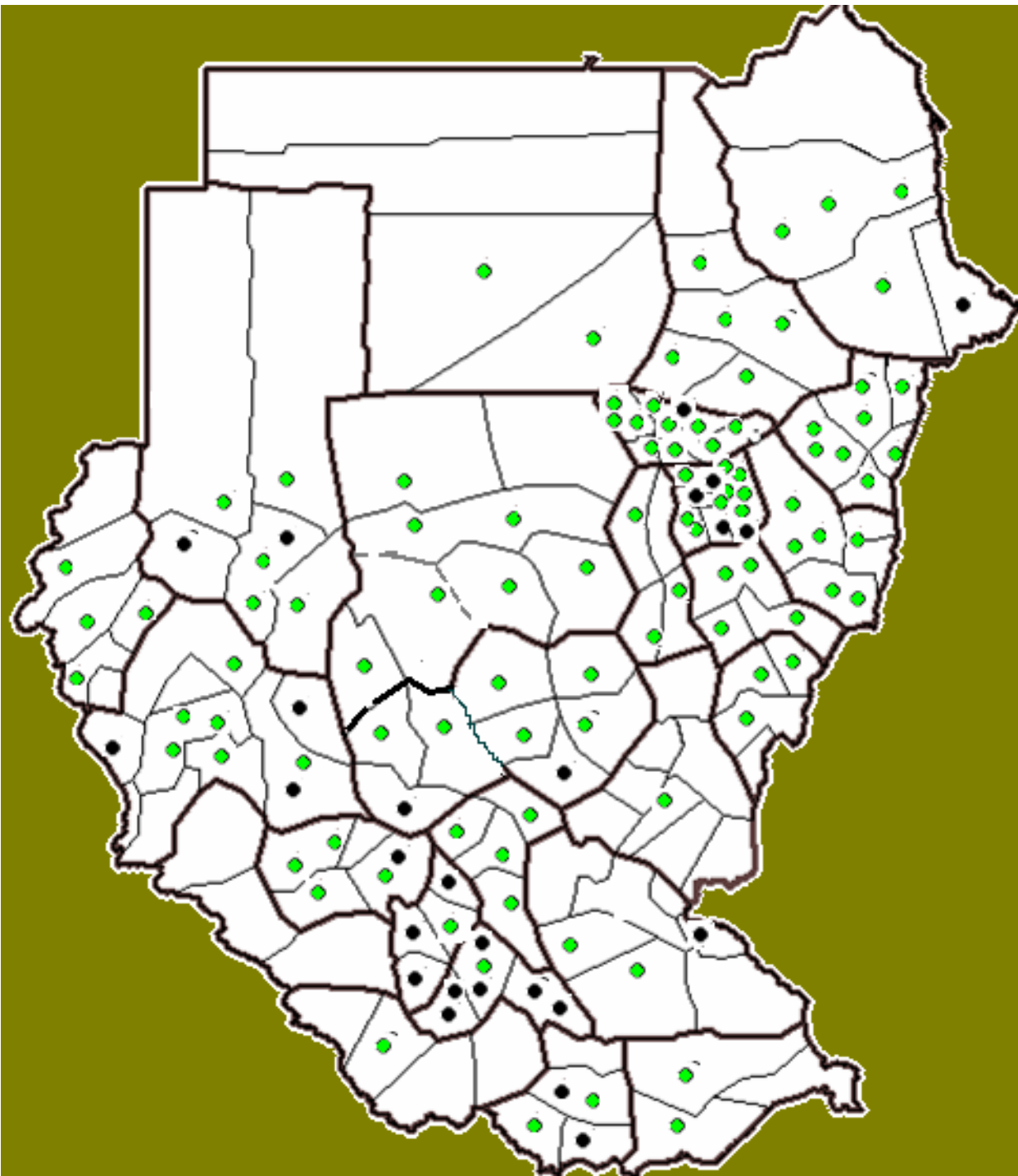
Week 20

(Ending on 18 May 2008)

**National AFP
Surveillance system
Sudan**

Map 1.
Distribution of
AFP cases by
classification
Sudan 2008*

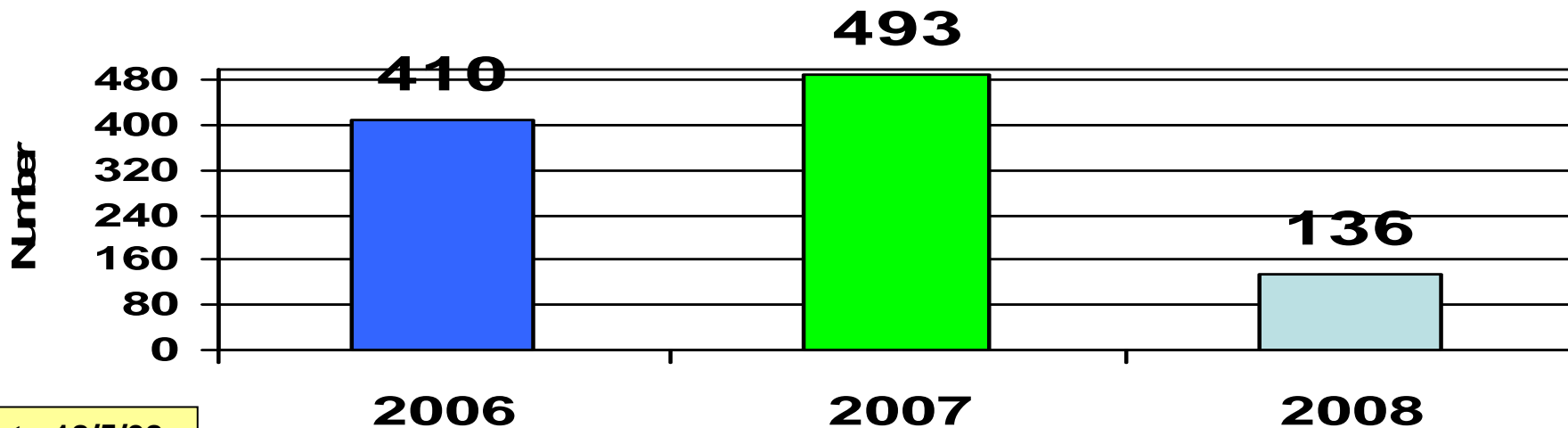
- Pending AFP case
- Non-polio AFP case



*Up to 18/5/08

Total AFP cases, 2006-2008*

Fig 1. Total SUDAN AFP cases reported



*Up to 18/5/08

Fig 2. North Sudan AFP cases reported

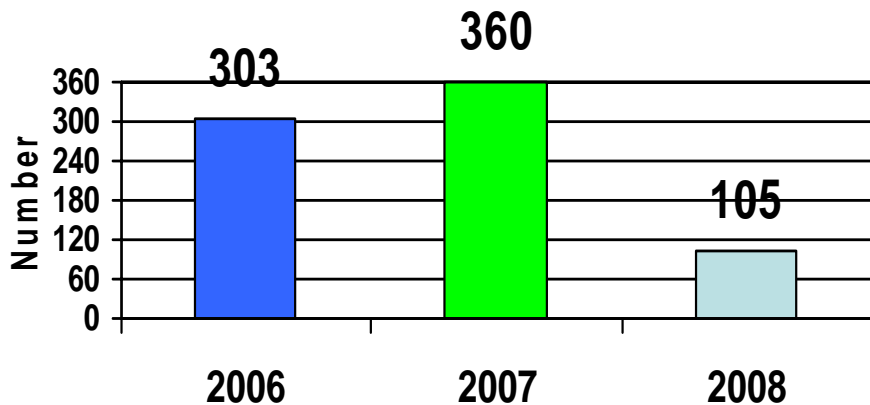


Fig 3. Southern Sudan AFP cases reported

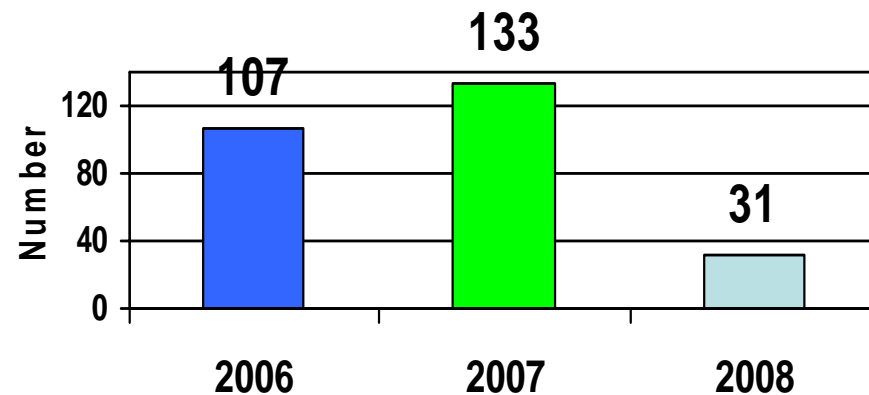


Fig 4. Total SUDAN AFP cases by age group, up to week 20, 2008

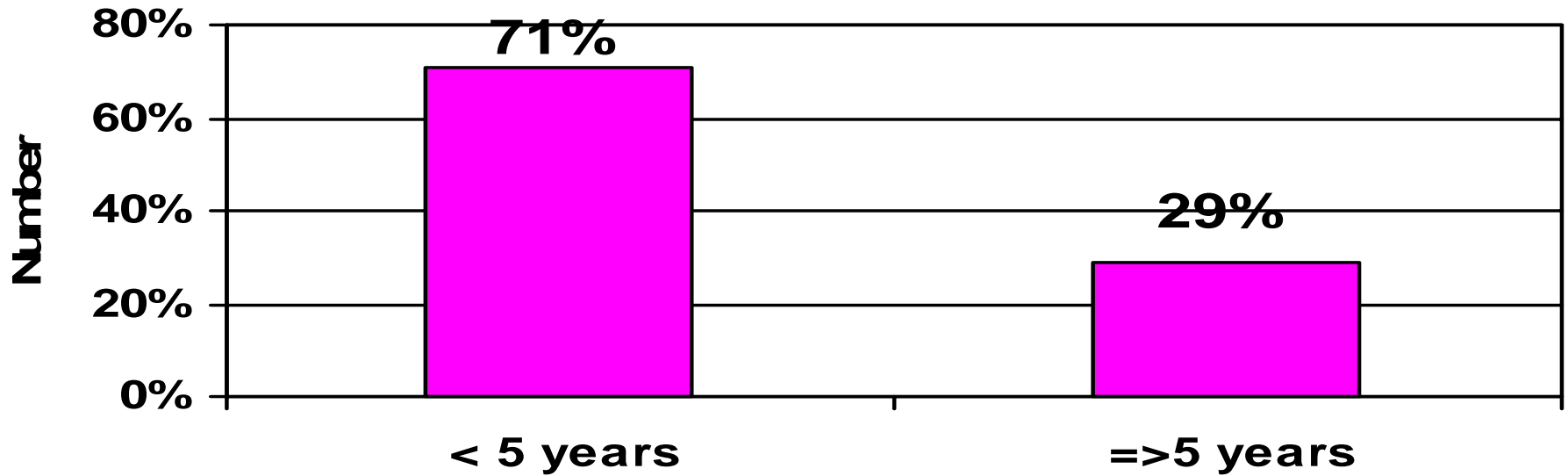


Fig 5. North SUDAN AFP cases by age group, up to week 20, 2008

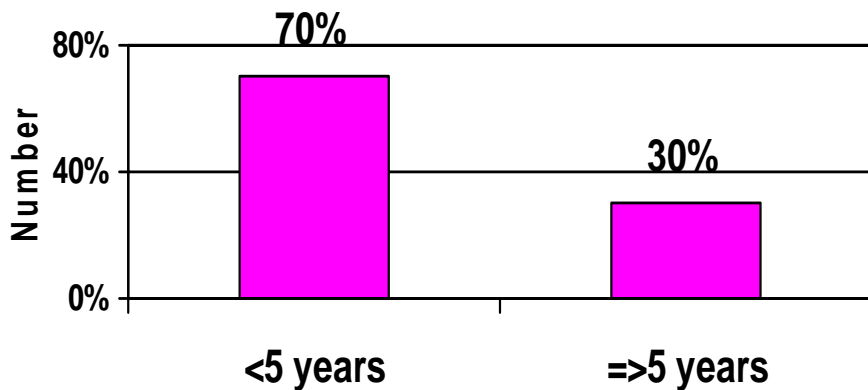


Fig 6. South SUDAN AFP cases by age group, up to week 20, 2008

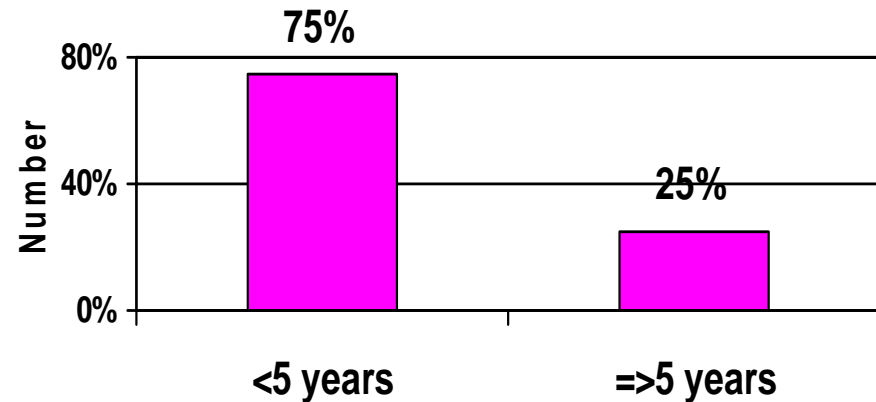


Figure 7. Percent distribution of AFP cases by time of detection, Sudan, up to week 20 2008

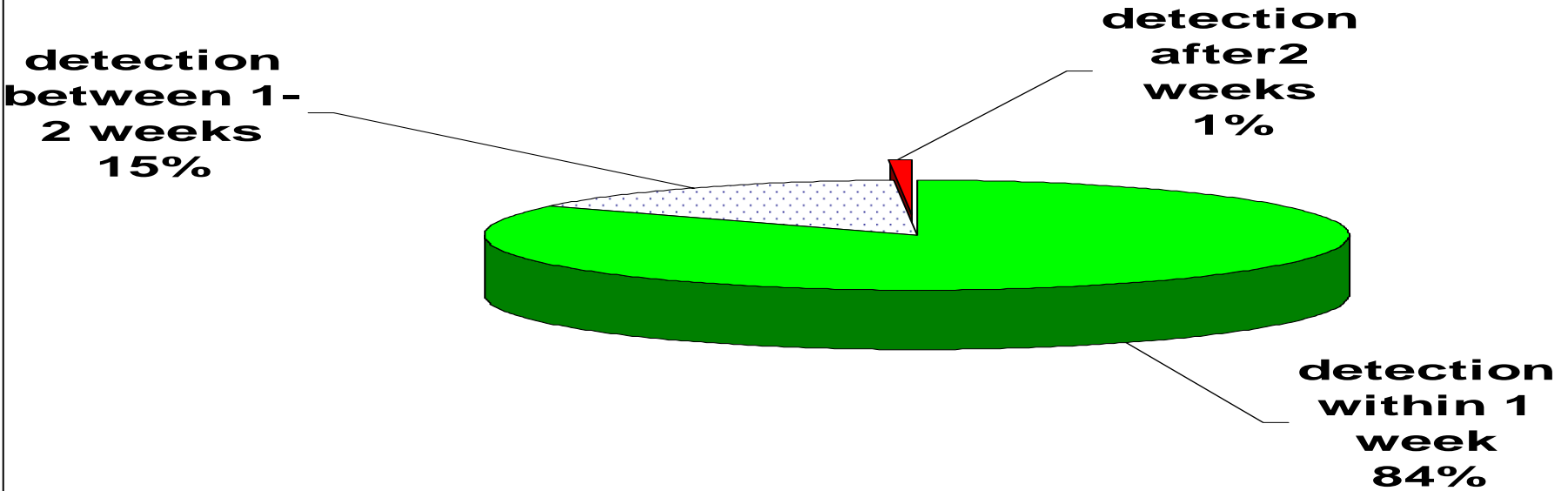


Figure 8. Percent distribution of AFP cases by time of detection, North Sudan, up to week 20 2008

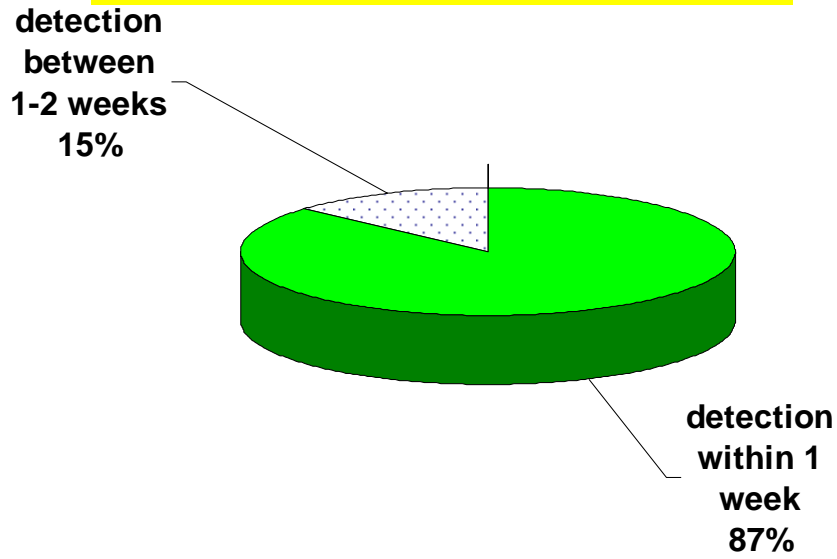


Figure 9. Percent distribution of AFP cases by time of detection, Southern Sudan, up to week 20 2008

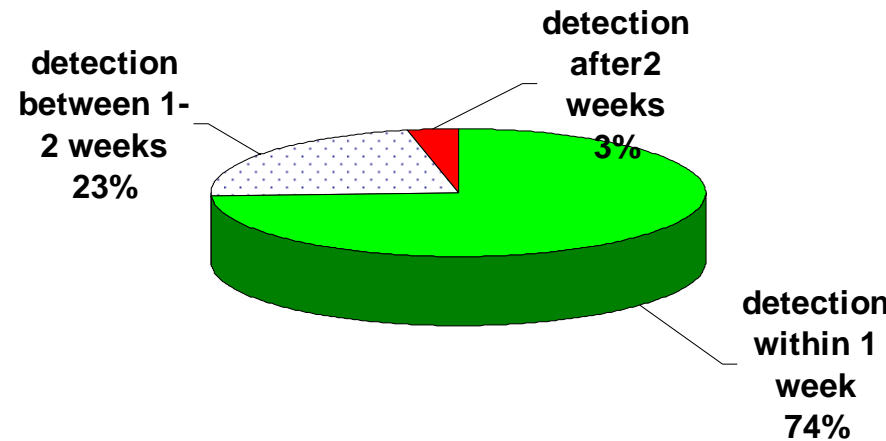


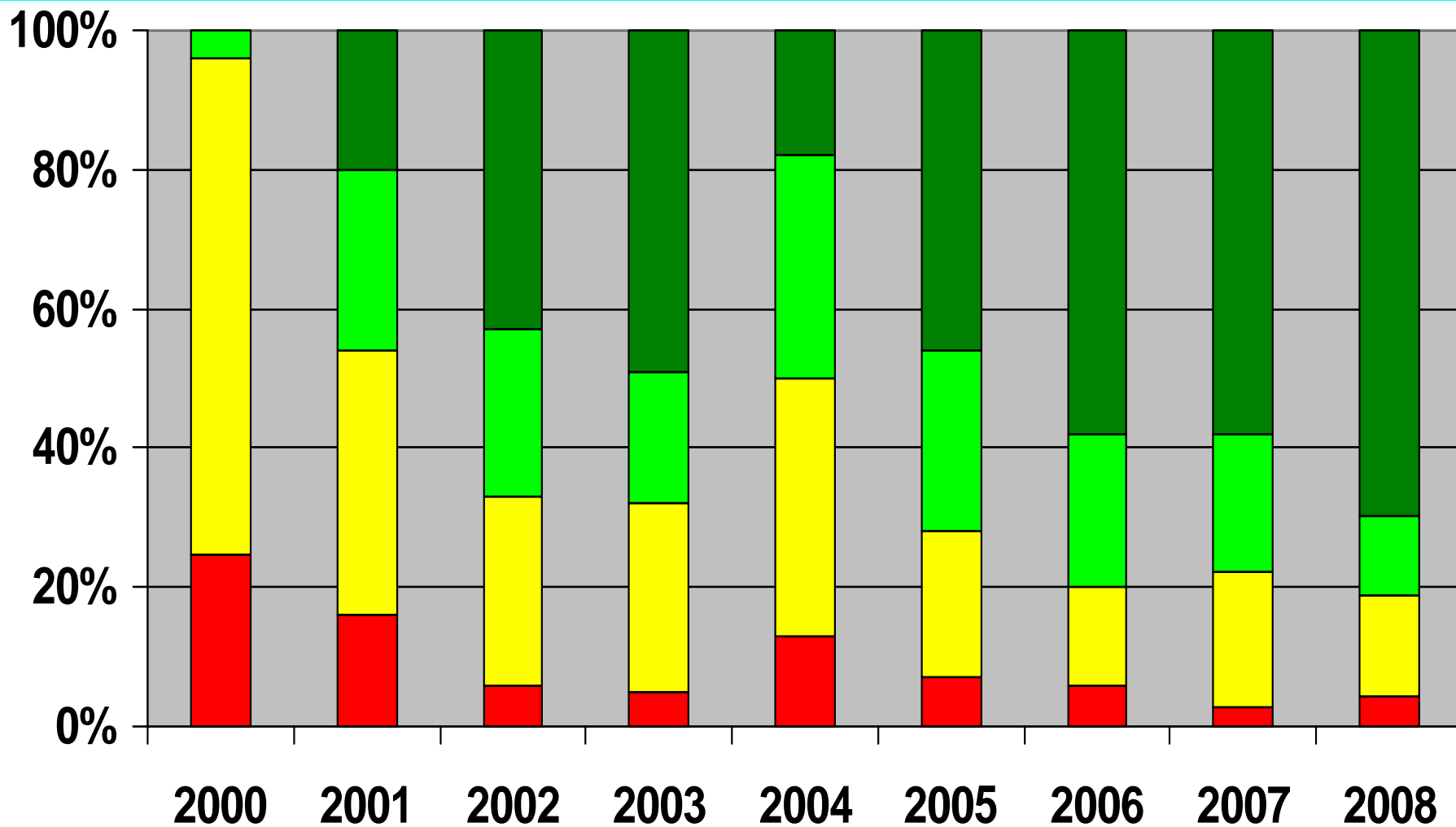
Table 1. Major AFP surveillance performance indicators, Northern States, week 20, 2008

State	U 15 yrs population	Total reported AFP cases	Non-polio AFP cases	Pending classification	Polio cases	Compatible cases	% Adequate stools	Annualized AFP rate	% NPEV
B. Nile	335,349	3	3	0	0	0	100%	2.3	0%
Gedarif	783,014	6	6	0	0	0	100%	2.0	17%
Gezira	1,768,855	15	11	4	0	0	100%	2.2	9%
Kasala	776,264	8	8	0	0	0	100%	2.7	38%
Khartom	2,154,959	20	19	1	0	0	100%	2.4	11%
N.Darf	786,139	7	5	2	0	0	100%	2.0	0%
N.Kord	1,206,410	7	7	0	0	0	100%	1.5	14%
Northern	254,978	2	2	0	0	0	50%	2.0	0%
Red Sea	327,066	5	4	1	0	0	100%	4.0	0%
River Nile	437,544	5	5	0	0	0	100%	3.0	0%
Sennar	665,628	4	4	0	0	0	100%	1.6	0%
S.Darfur	1,579,911	8	5	3	0	0	100%	1.0	20%
S. Kord	922,086	8	6	2	0	0	100%	2.3	17%
W.Darfur	884,736	4	4	0	0	0	100%	1.2	25%
W. Nile	775,659	3	3	0	0	0	100%	1.0	33%
Total	13,658,598	105	92	13	0	0	99%	1.9	13%

Table 2. Major AFP surveillance performance indicators, Southern States, week 20, 2008

State	U 15 yrs population	Total reported AFP cases	Non-polio AFP cases	Pending classification	Polio cases	Compatible cases	% Adequate stools	Annualized AFP rate	% NPEV
Bahr Elgabal	217,555	4	2	2	0	0	100%	4.8	0%
E. Equatoria	214,239	2	2	0	0	0	100%	2.4	50%
Lakes	218,533	4	2	2	0	0	100%	3.6	0%
Jongli	431,881	3	2	1	0	0	100%	1.8	0%
N.Bahr Elgazal	328,795	5	4	1	0	0	100%	4.0	0%
Unity	107,203	4	4	0	0	0	100%	9.7	25%
Upper Nile	215,941	1	1	0	0	0	100%	1.2	0%
Warap	431,884	7	1	6	0	0	71%	3.0	0%
W.Bahr Elgazal	109,597	0	0	0	0	0	0%	0.0	0%
W. Equatoria	201,500	1	1	0	0	0	100%	1.3	0%
Total	2,477,128	31	19	12	0	0	94%	2.9	11%

Fig 10. Percent distribution of AFP cases < 60 months by number of OPV doses, Sudan 2000-2008*



■ 0 OPV doses ■ '1-3 OPV doses ■ '4-6 OPV doses ■ 7+ OPV doses

*Up to 18/5/08

Fig 11. Percent distribution of AFP cases < 60 months by 6 months period and number of OPV doses, Sudan 2004-08*

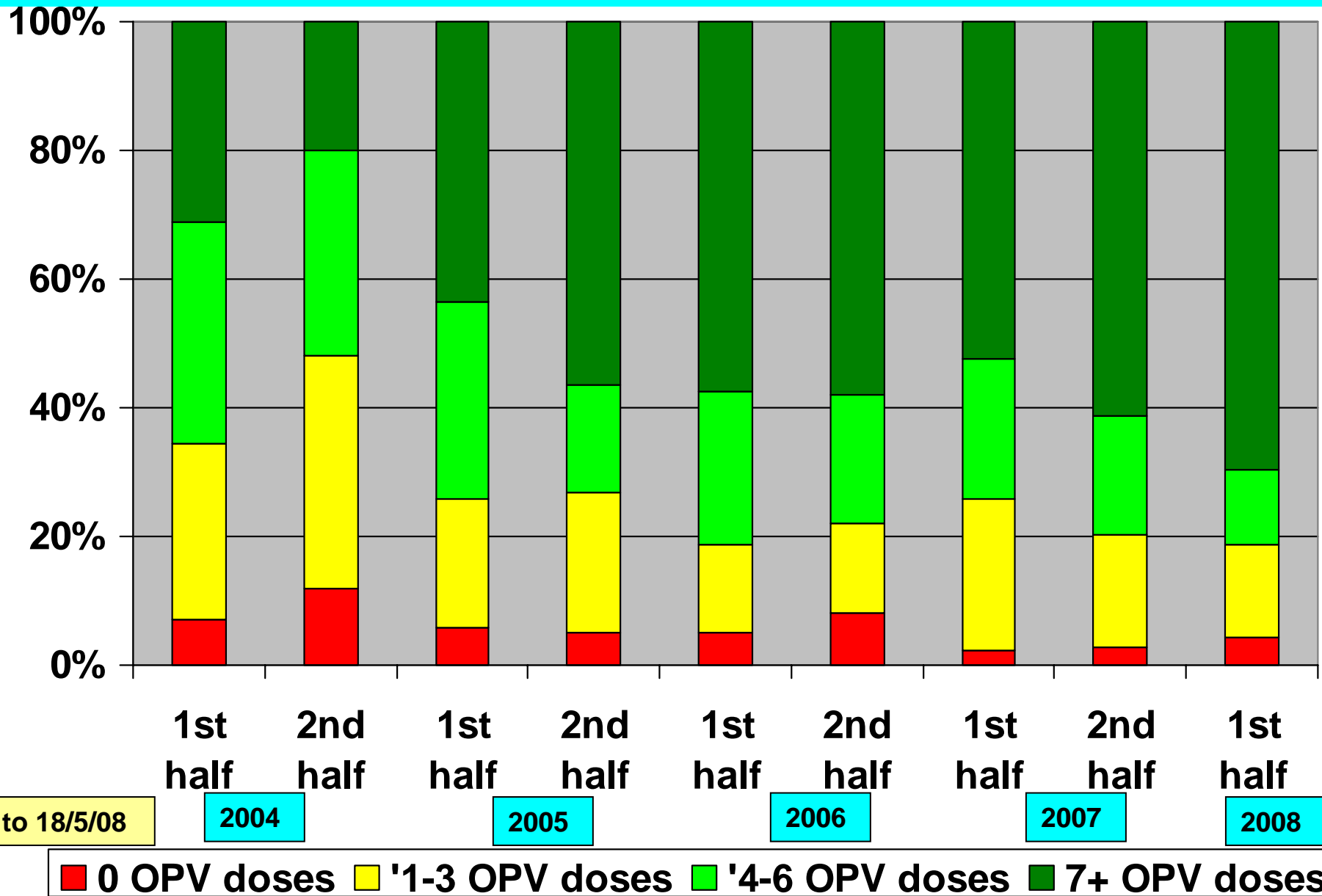
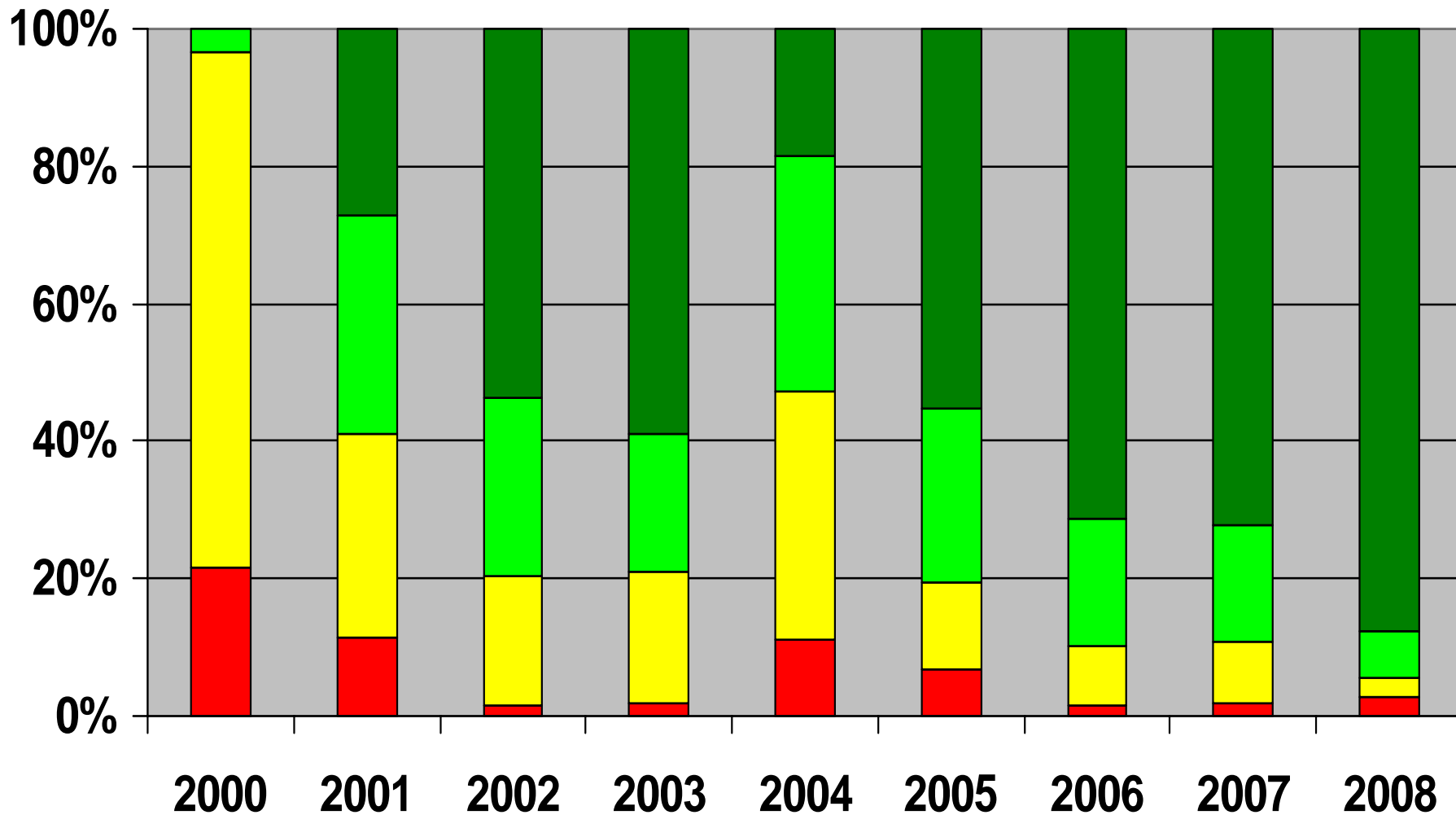


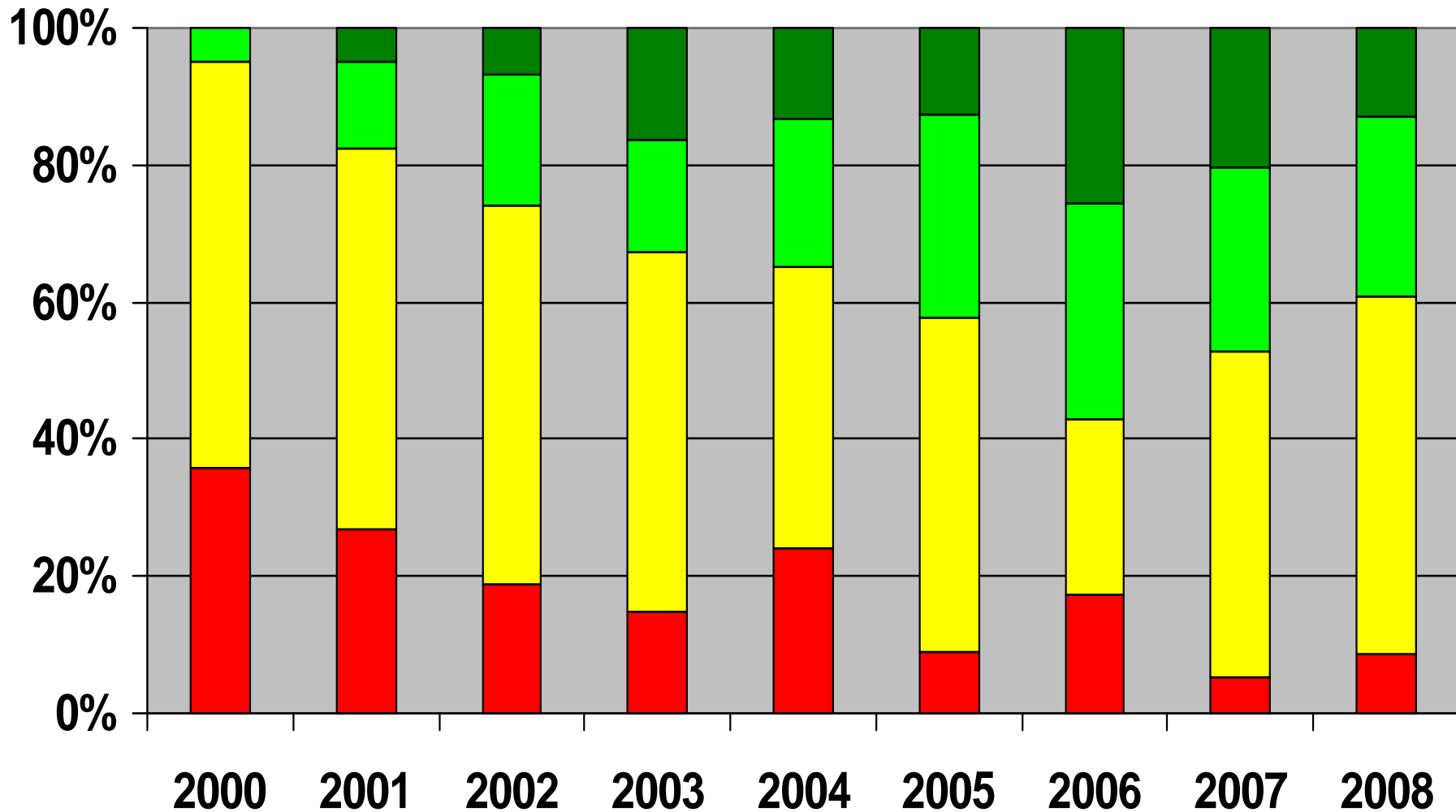
Fig 12. Percent distribution of AFP cases < 60 months by number of OPV doses, North Sudan 2000-08*



■ 0 OPV doses
 ■ '1-3 OPV doses
 ■ '4-6 OPV doses
 ■ 7+ OPV doses

*Up to 18/5/08

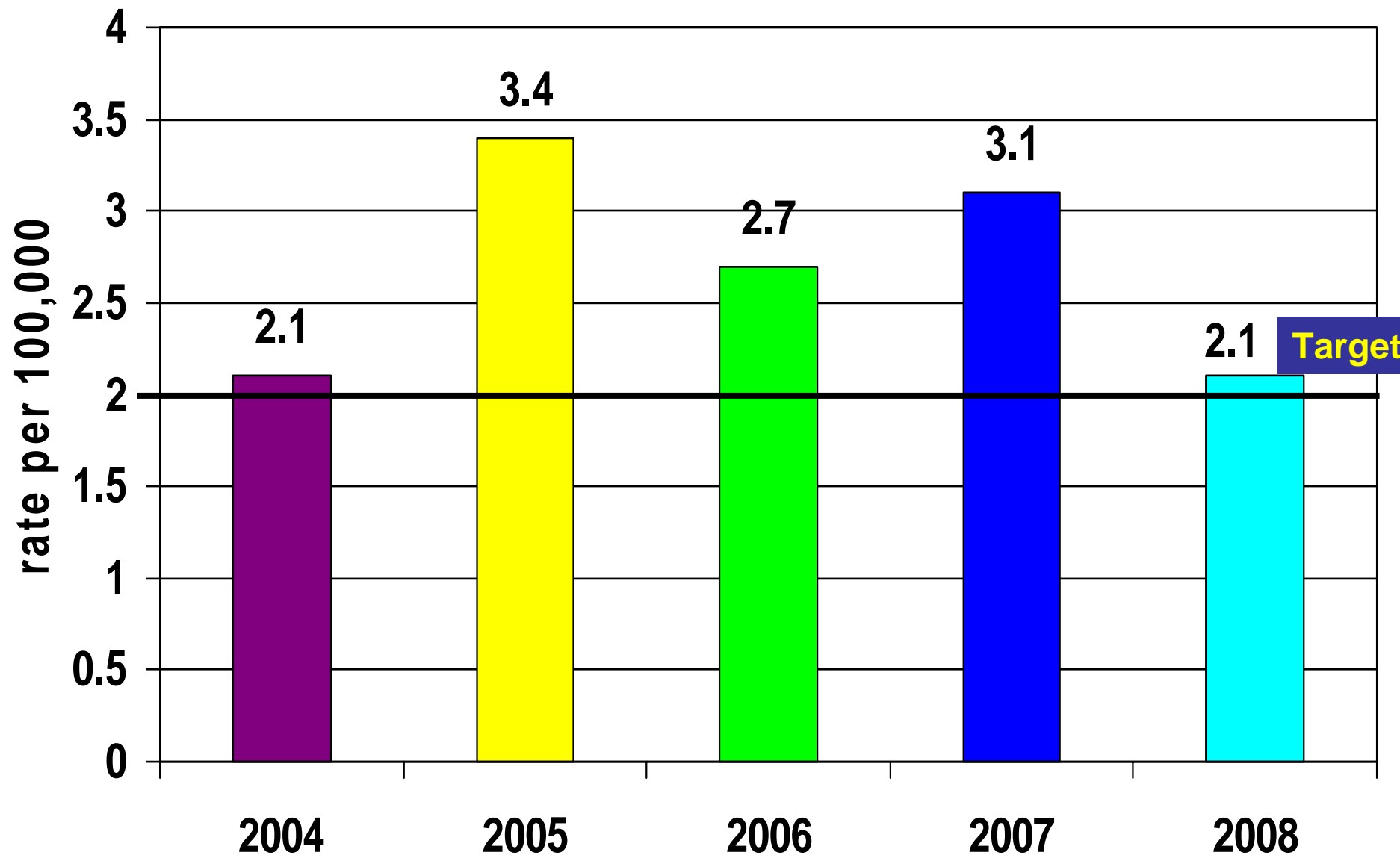
Fig 13. Percent distribution of AFP cases <60 months by number of OPV doses, South Sudan 2000-2008*



■ 0 OPV doses ■ '1-3 OPV doses ■ '4-6 OPV doses ■ 7+ OPV doses

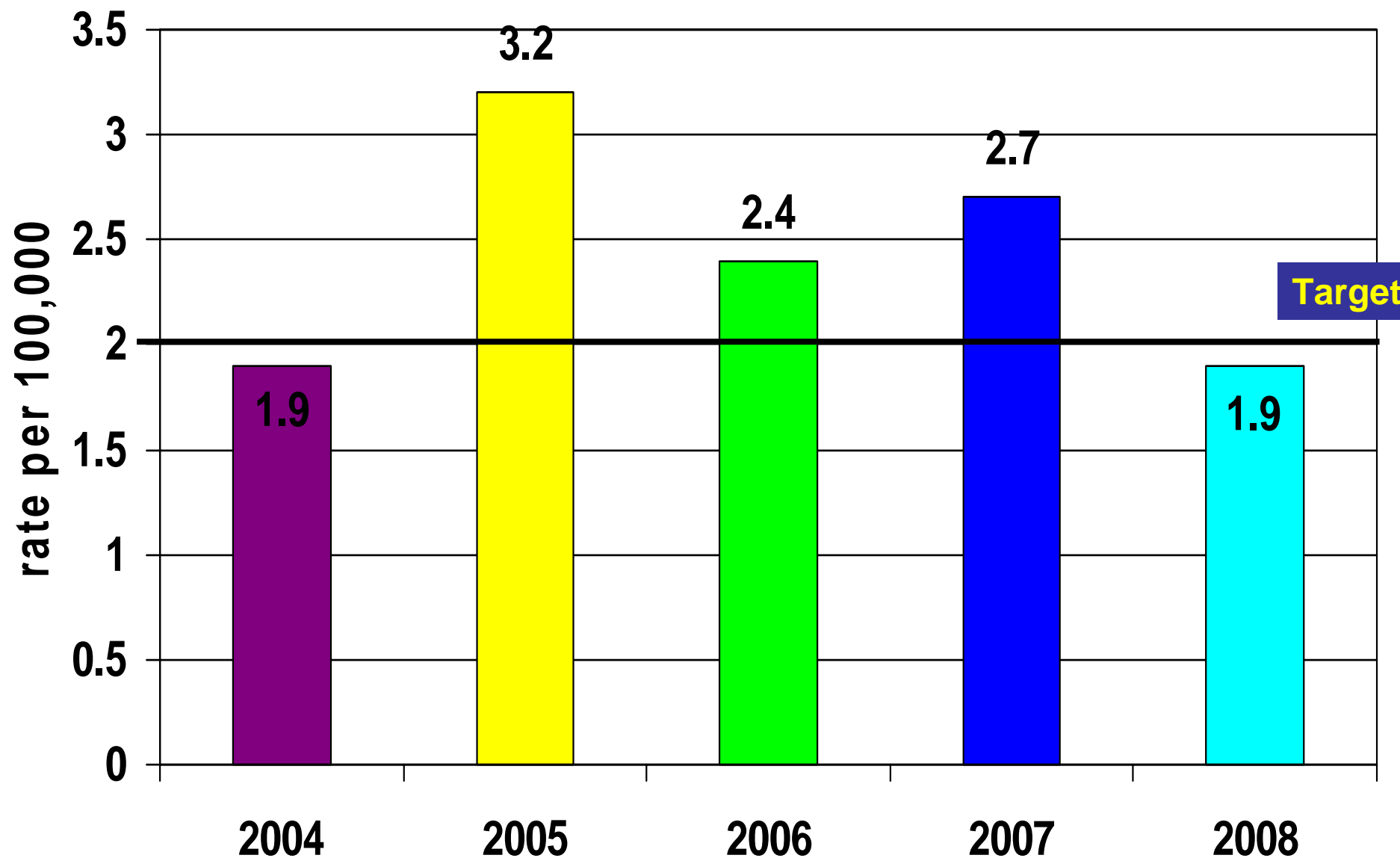
*Up to 18/5/08

Fig 14. Annualized Non-Polio AFP rate per 100,000 children under 15 years of age, total Sudan, 2004-2008*



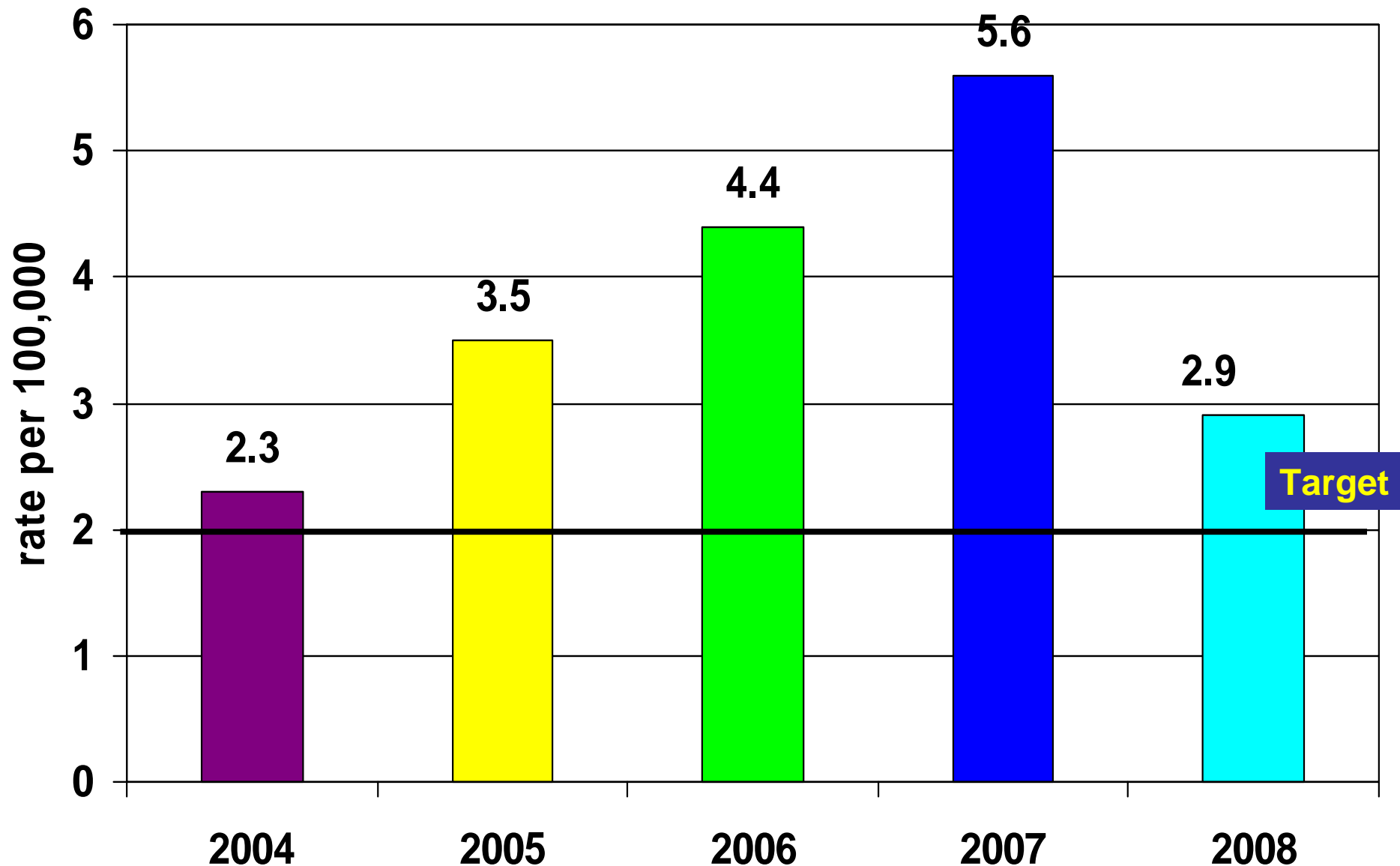
*Up to 18/5/08

Fig 15. Annualized Non-Polio AFP rate per 100,000 children under 15 years of age, North Sudan, 2004 – 2008*



*Up to 18/5/08

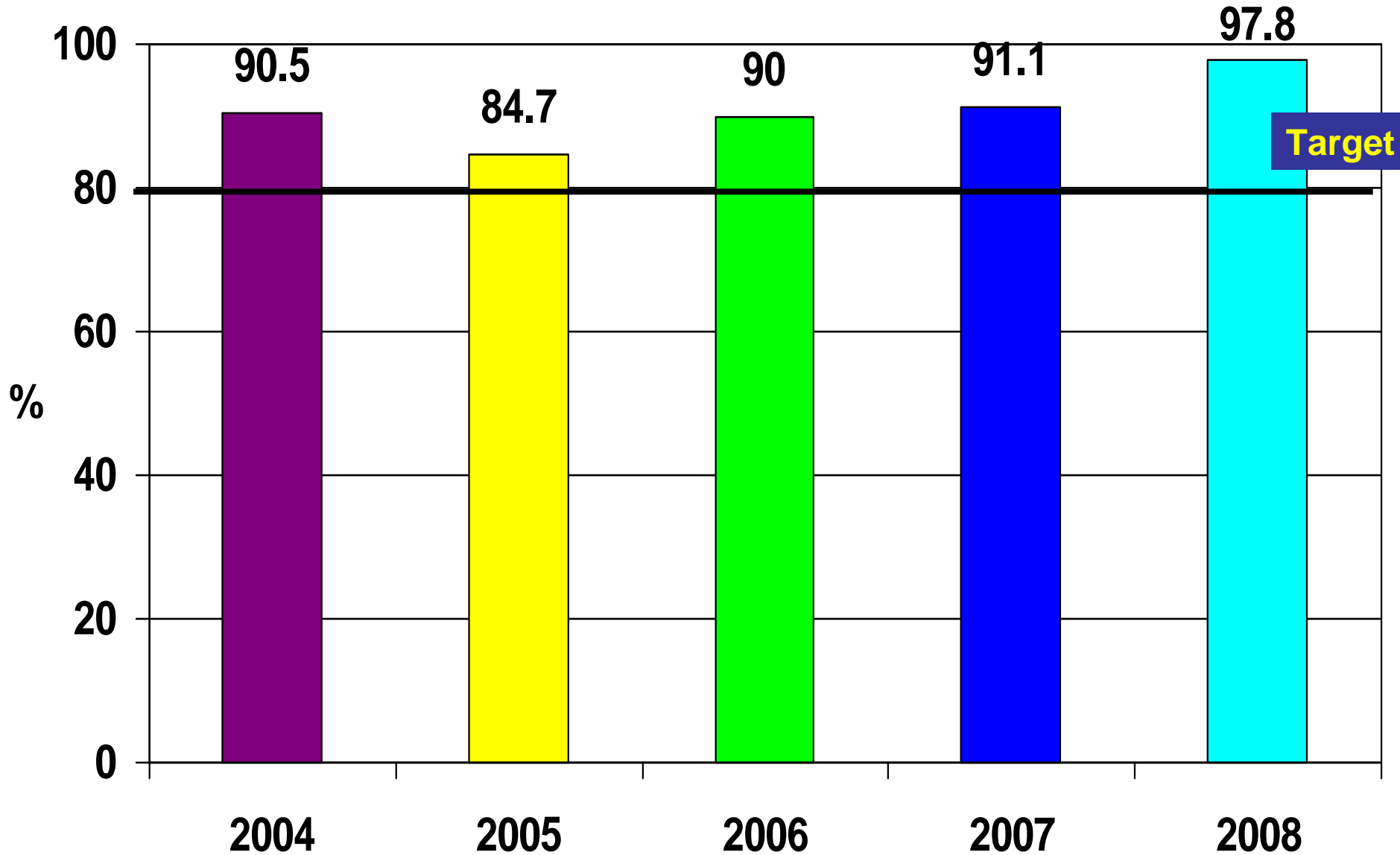
Fig 16. Annualized Non-Polio AFP rate per 100,000 children under 15 years of age, southern Sudan 2004 – 2008*



*Up to 18/5/08

Fig 17. Adequate stool collection rate, total Sudan

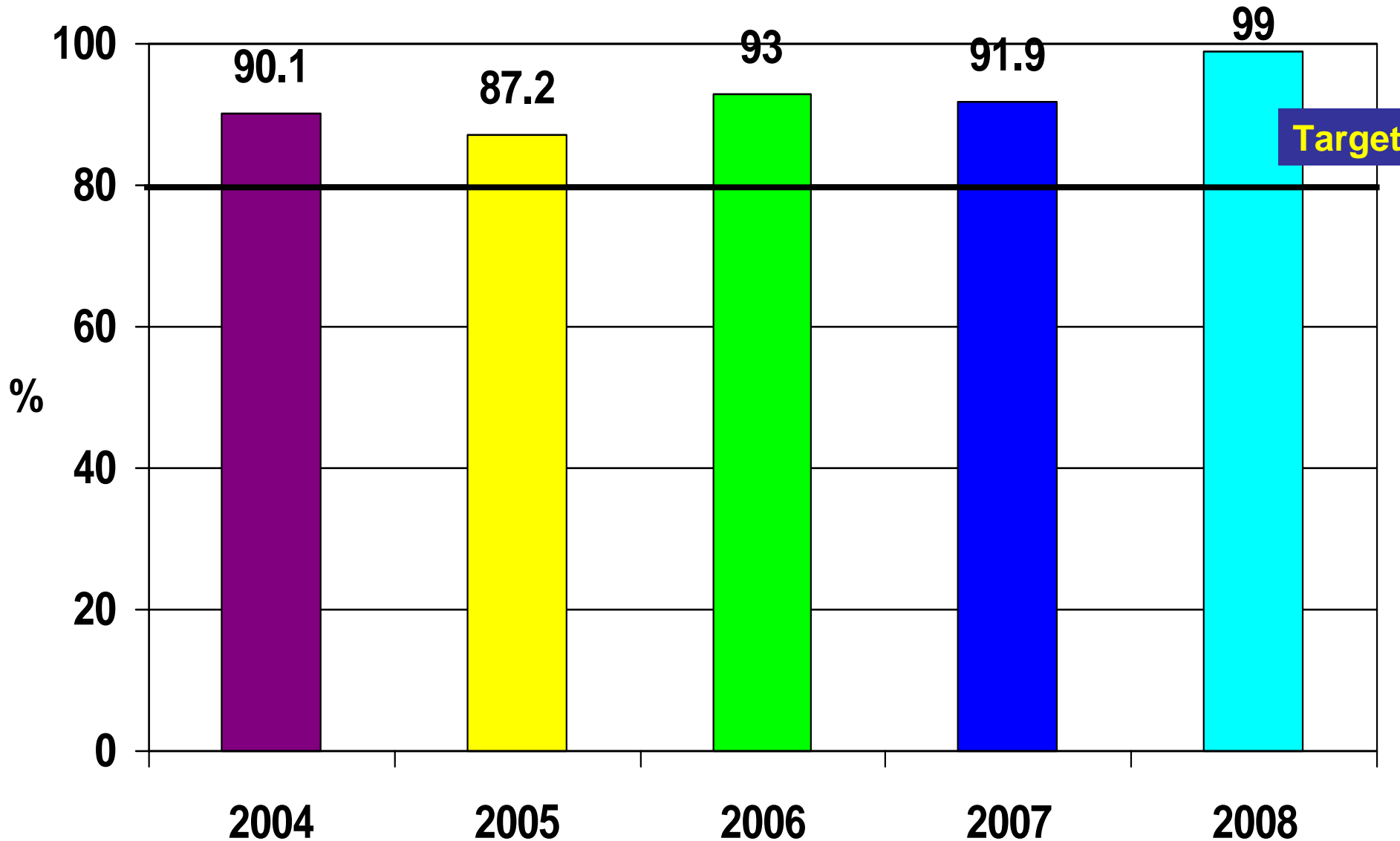
2004 – 2008*



*Up to 18/5/08

Fig 18. Adequate stool collection rate

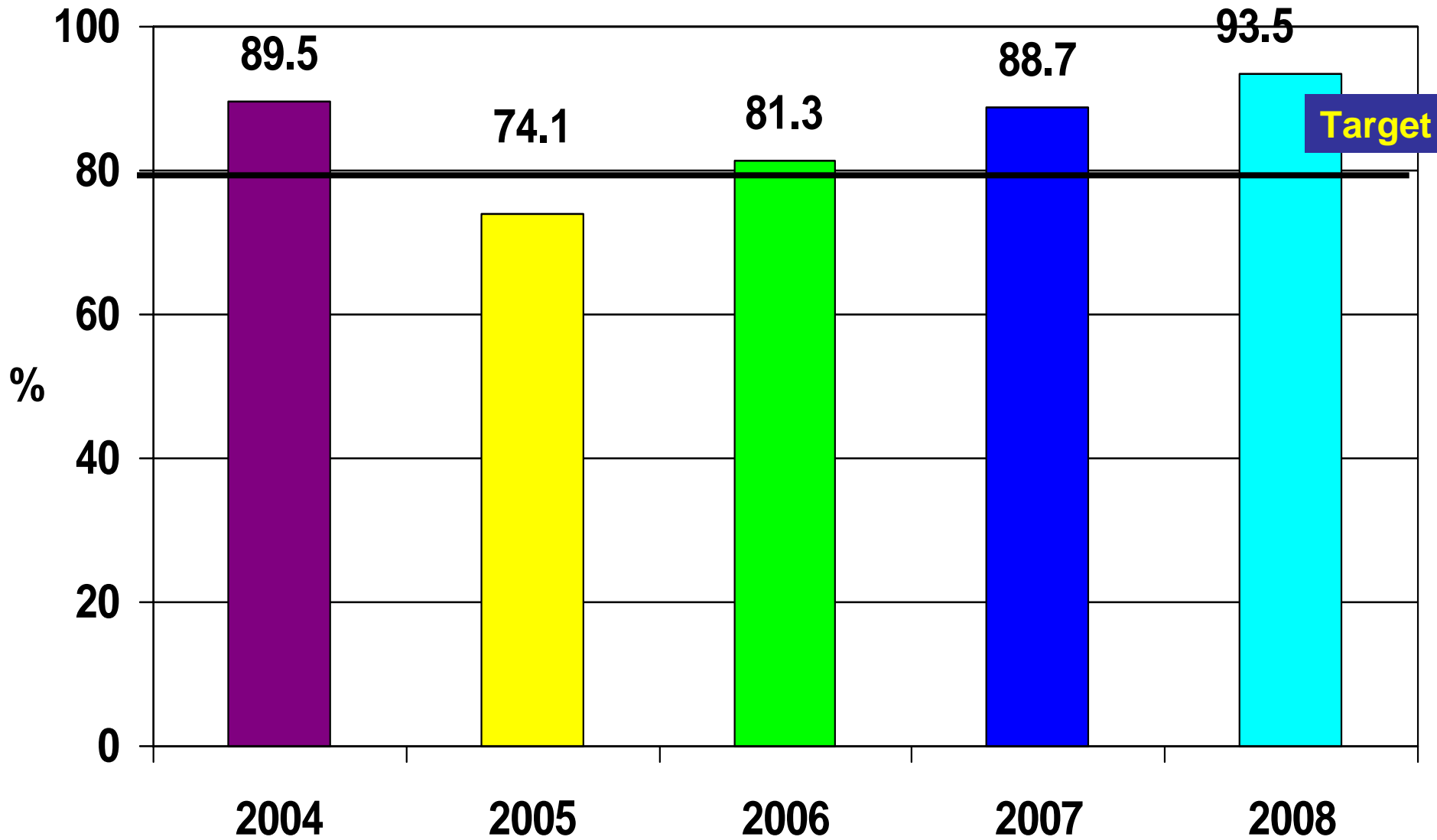
North Sudan, 2004 – 2008*



*Up to 18/5/08

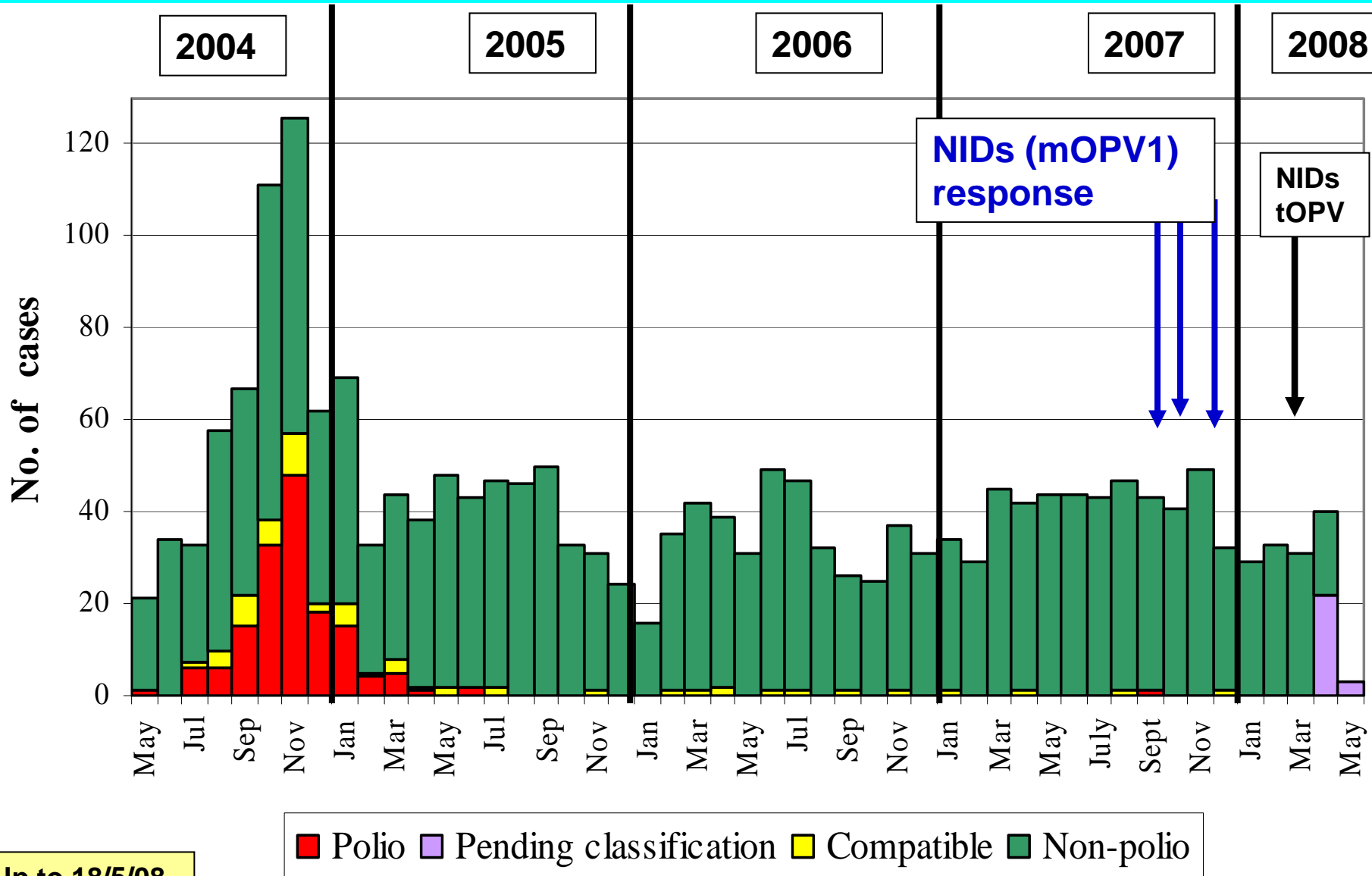
Fig 19. Adequate stool collection rate

Southern Sudan 2004 – 2008*



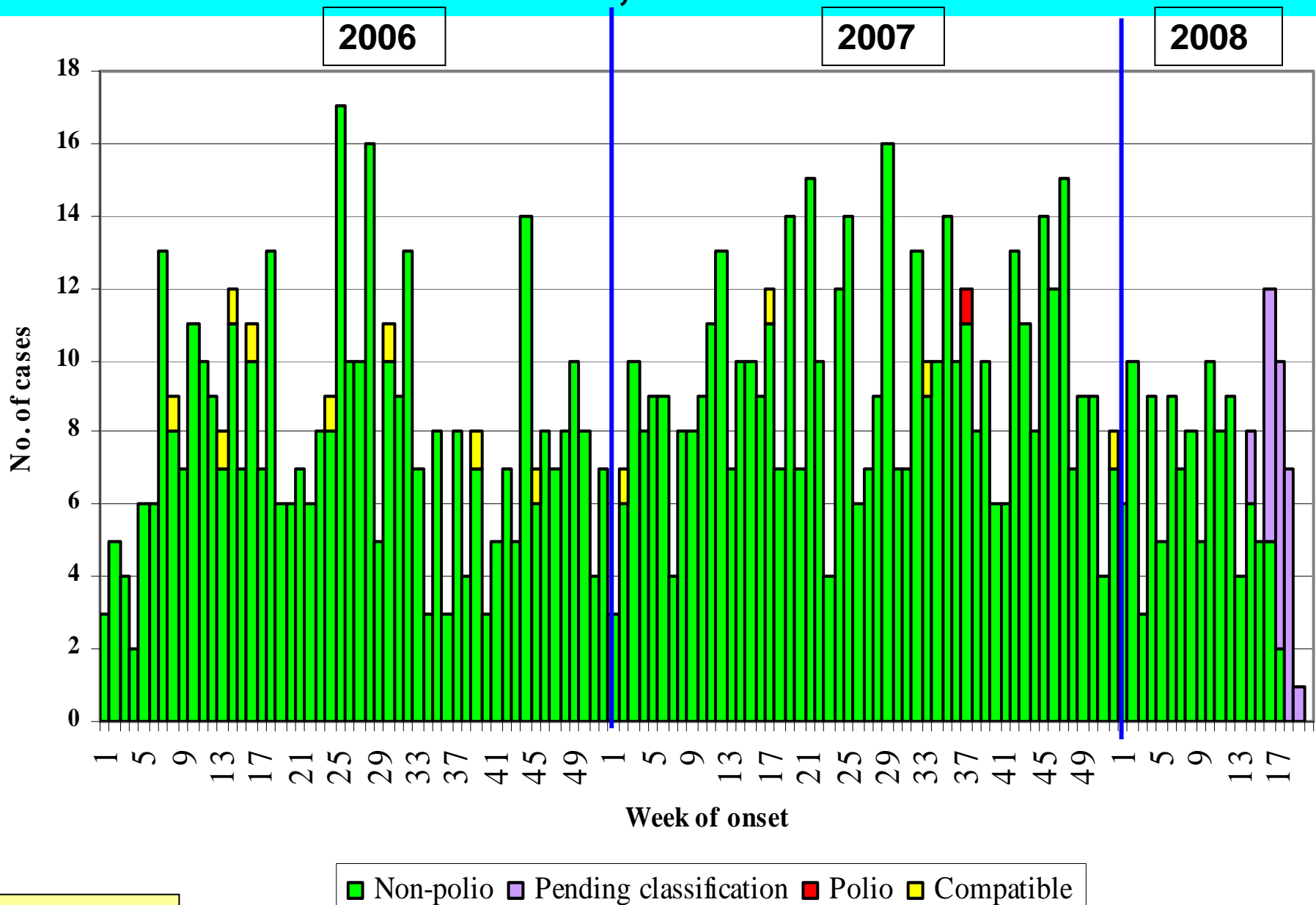
*Up to 18/5/08

Fig 20. Distribution of polio and non-polio AFP Cases by classification, month of onset & SIA response to the poliovirus importation, total SUDAN 2004-08*



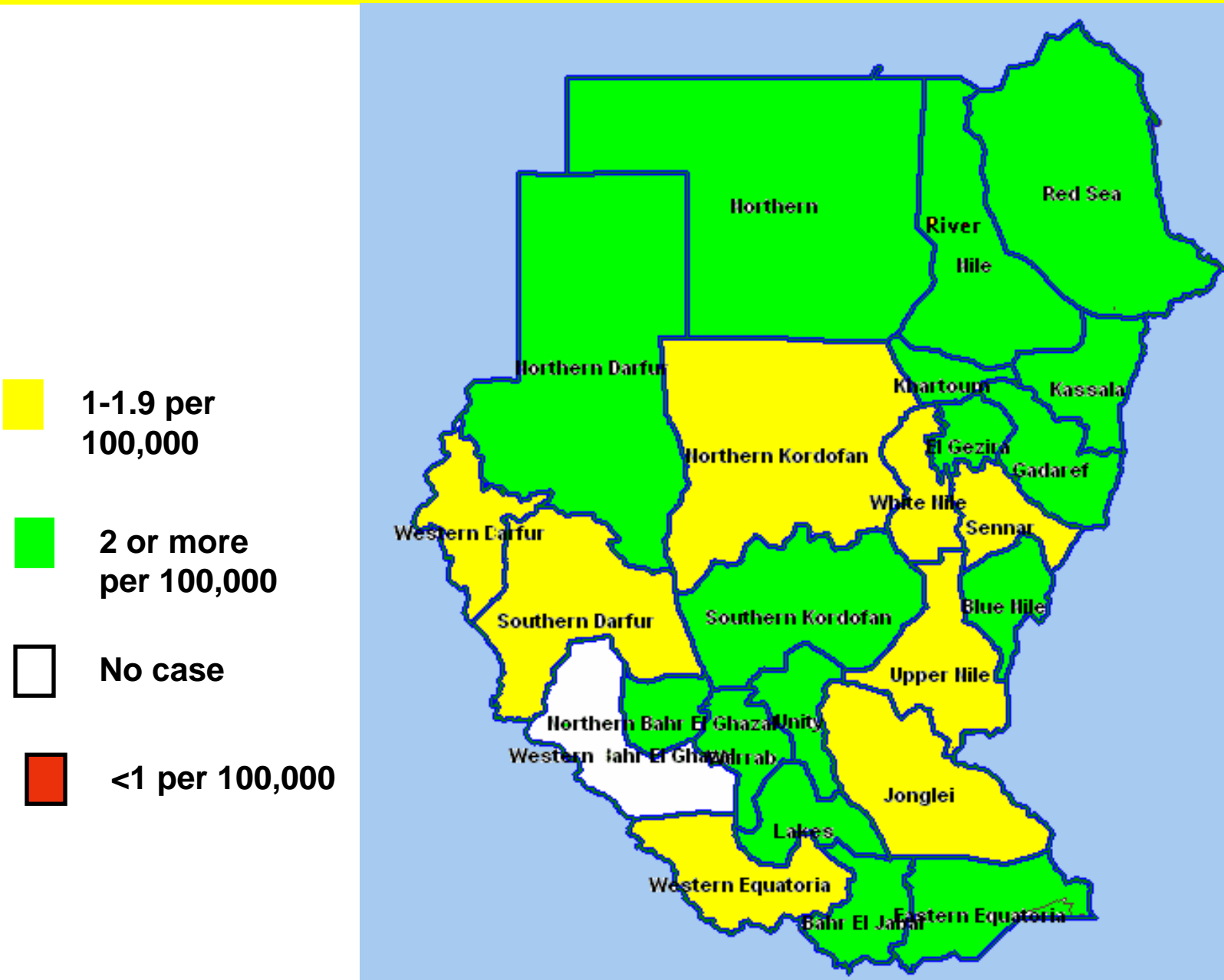
*Up to 18/5/08

Fig 21. Distribution of AFP cases by classification and week of onset, Sudan 2006 – 2008*



*Up to 18/5/08

Map 2. Annualized non-polio AFP rate per 100,000 by state, up to week 20, 2008



Map 3. Percent distribution of AFP cases having adequate stool samples by state, up to week 20, 2008

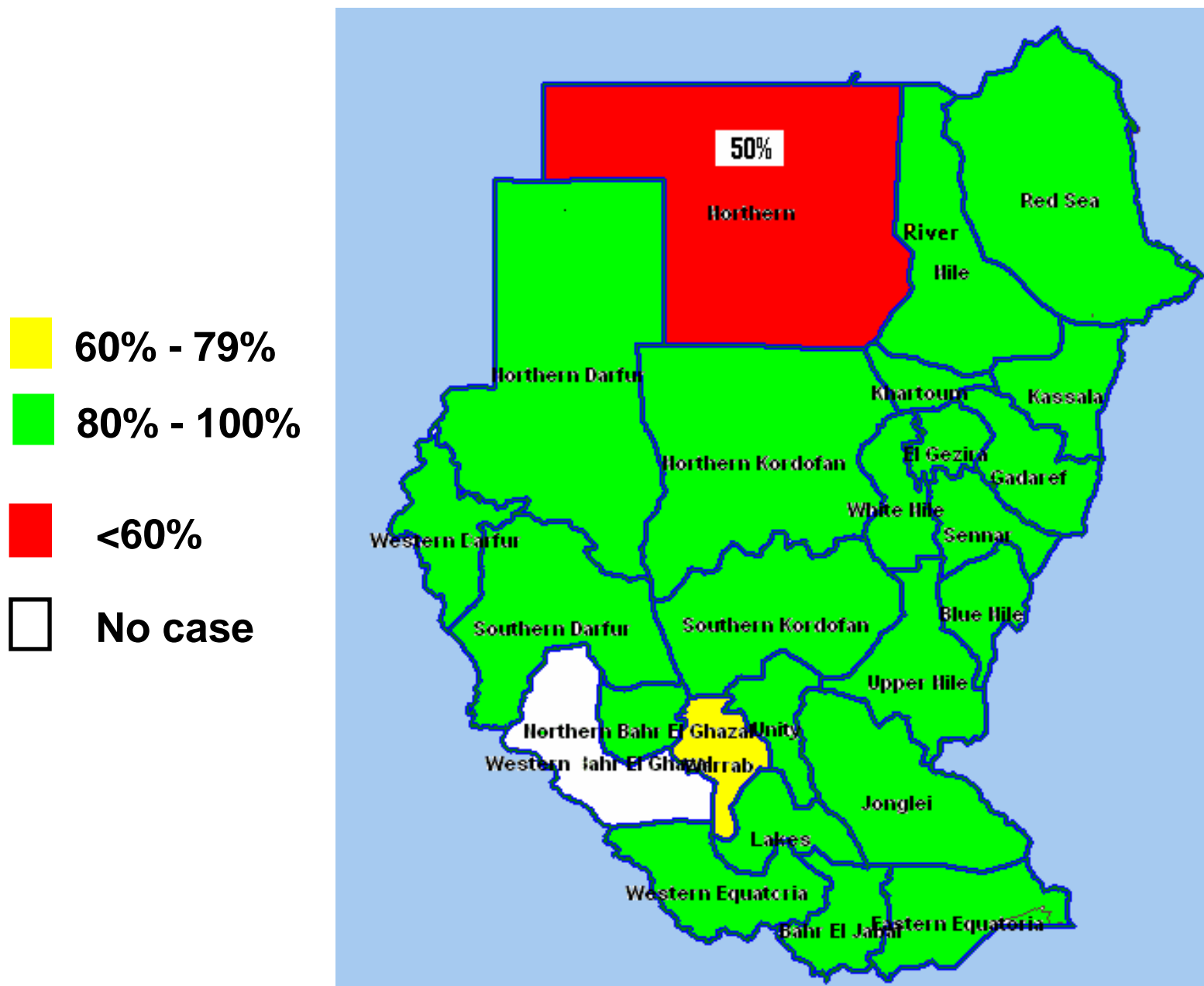


Table 3. National polio lab performance indicators North Sudan, 2006-2008

Indicator	2006	2007	2008*
Total AFP cases tested in NPL	305	355	104
Cases with wild poliovirus	0	1	0
Cases with non-polio enterovirus	19%	15%	13%
Sabin like viruses No. & (%) from AFP cases	10 (3.3%)	10 (3%)	4 (4%)
Median days from the time of samples received in the lab to primary culture report or L20B result	18 days	14 days	12 days
Number of AFP contacts tested in the NPL	121	326	123
Contacts with non-polio enterovirus	12.4%	10.4%	5%
Sabin like viruses No. & (%) from contacts	6(5%)	4(1%)	2(2%)
Number of contacts with wild poliovirus P1	0	2	0
Number of healthy children with wild poliovirus P1	0	1	0

*Up to 18/5/08

Table 4. Polio lab performance North Sudan, 2007 and 2008

Week of onset	Total AFP Cases	AFP Cases under process	L20B +ve pending ITD	Negative cases	NPEV positive	% NPEV	Result reported within 14 days*	Arrival within 3 days of being collected	Arrival within 3 days of being sent
2007 up to week 20	135	0	0	118	17	12.5 %	100%**	77%	96.3%
2008 up to week 20	104	13	0	79	12	13 %	81.3%	76%	98%

* The time for reporting Lab result has changed from 28 days to 14 days as Sudan has applied the new algorithm in culturing stool samples.

** As per the old algorithm (result to be reported within 28 days).

Fig 22. Specimens' timeliness, NPL, 2007-2008

Paralysis onset

Stool Collected

Stool in lab

Culture results reported

ITD results reported

2007



Average=25

Primary Culture result from Date of onset Average=35

ITD result from date of onset

2008*



Average=21

Primary Culture result from Date of onset

Average=30

ITD result from date of onset

*Up to 18/5/08