

Table (1) Measles weekly Bulletin WHO/MoH Iraq
Surveillance summary and analysis of selected performance indicators for measles/rubella surveillance-Iraq
2010; first 44 weeks compared with all 2009

Province	Suspect measles		Cases tested for measles		Measles lab confirmed		Total confirmed measles		Annualized Measles incidence/million		Total rubella cases	
	2009	2010	2009	2010	2009	2010	2009	2010	2009	2010**	2009	2010
ANBAR	126	3	19	3	12	1	119	1	75	1	0	0
BABYLON	3308	30	381	29	333	0	3260	1	1787	1	27	1
BA-KARKH	3154	130	583	52	436	19	3007	96	847	32	26	0
BA-RESAFA	6701	126	1018	78	830	4	6515	53	1590	15	26	2
BASRAH	1180	92	182	86	135	1	1133	8	415	3	7	2
DAHUK	59	22	25	20	15	7	49	9	49	11	0	1
DIWANIYA	1710	27	419	21	376	1	1667	6	1419	6	8	2
DIYALA	2290	35	97	15	80	9	2273	29	1606	24	2	0
ERBIL	99	14	52	13	45	2	92	3	54	2	2	0
KERBALA	1227	27	295	27	269	0	1201	0	1200	0.000000	16	1
KIRKUK	448	156	64	131	51	99	435	125	348	118	2	1
MISSAN	1782	18	156	8	88	0	1714	10	1647	11	4	0
MUTHANNA	932	8	92	8	73	0	913	0	1169	0.000000	3	0
NAJAF	307	33	141	31	135	0	301	2	233	2	6	1
NINEWA	1118	102	242	89	192	49	1068	63	325	23	12	1
SALAHADIN	185	16	15	12	11	7	181	11	129	9	0	0
SULAYMANIA	169	48	98	19	76	9	147	37	84	25	3	0
THI-QAR	1149	63	208	50	153	0	1094	13	617	9	10	0
WASSIT	4384	60	267	44	212	1	4329	17	3711	17	13	1
Iraq	30328	1010	4354	736	3522	209	29498	484	872	17	167	13

Serious problems in measles reporting in one DoH

Yellow shading past measles outbreak

****Annualized data**

Red shading current intense measles transmission, Total confirmed measles= Total suspect measles-discarded. All notified cases without clinical, lab or Epi link are considered as confirmed.

Table (2) Cumulative measles/rubella case finding report up to week 42 ending 24 October 2010

Province	Total population	Measles case finding report							Rubella case finding report			
		total reported cases	No. of specimen tested for measles	MEASLAB confirmed	Count of MEASEPI linked	Count of MEASCLIN diagnosed	total confirmed measles	Count of discarded measles	count of Rubella tested	Rubella Lab confirmed	rubella EPI linked	total discarded rubella
ANBAR	1,593,531	3	3	1	0	0	1	2	3	0	0	3
BABYLON	1,824,251	30	29	0	0	1	1	29	29	1	0	28
BA-KARKH	3,549,800	130	52	19	0	77	96	34	52	0	0	52
BA-RESAFA	4,097,682	126	78	4	8	41	53	73	78	2	0	76
BASRAH	2,732,495	92	86	1	0	7	8	84	86	2	0	84
DAHUK	990,535	22	20	7	2	0	9	13	20	1	0	19
DIWANIYA	1,175,053	27	21	1	0	5	6	21	21	2	0	19
DIYALA	1,415,301	35	15	9	3	17	29	6	15	0	0	15
ERBIL	1,707,260	14	13	2	0	1	3	11	13	0	0	13
KERBALA	1,000,546	27	27	0	0	0	0	27	27	1	0	26
KIRKUK	1,251,241	156	131	99	2	24	125	31	131	1	0	130
MISSAN	1,040,440	18	8	0	0	10	10	8	8	0	0	8
MUTHANNA	780,802	8	8	0	0	0	0	8	8	0	0	8
NAJAF	1,293,603	33	31	0	0	2	2	31	31	1	0	30
NINEWA	3,290,611	102	89	49	9	5	63	39	89	1	0	88
SALAHADIN	1,402,411	16	12	7	0	4	11	5	12	0	0	12
SULAYMANI	1,753,018	48	19	9	0	28	37	11	19	0	0	19
THI-QAR	1,772,302	63	50	0	0	13	13	50	50	0	0	50
WASSIT	1166475	60	44	1	0	16	17	43	44	1	0	43

Iraq	33,837,357	1010	736	209	24	251	484	526	736	13	0	723
-------------	-------------------	------	-----	------------	----	-----	-----	-----	-----	----	---	-----

Table (3) Cumulative measles/rubella case count and surveillance indicators up to week 42 ending 24 October 2010

Province	Total population	** Measles incidence	*** Annualized measles reporting rate	Indicators target >80%				
				% of suspected tested for measles IgM	% with complete investigation	% of specimens received at the NML within 7 days	% adequate specimens	% results reported to EPI within 7 days
ANBAR	1,593,531	1	0	100%	0%	100%	100%	100%
BABYLON	1,824,251	1	2	100%	55%	79%	100%	100%
BA-KARKH	3,549,800	32	1	100%	48%	87%	100%	98%
BA-RESAFA	4,097,682	15	2	83%	58%	59%	75%	100%
BASRAH	2,732,495	3	4	95%	70%	98%	95%	100%
DAHUK	990,535	11	2	100%	45%	30%	91%	100%
DIWANIYA	1,175,053	6	2	100%	48%	81%	95%	100%
DIYALA	1,415,301	24	1	100%	33%	80%	78%	87%
ERBIL	1,707,260	2	1	93%	71%	69%	93%	100%
KARBALA	1,000,546	0.0000	3	100%	22%	100%	100%	100%
KIRKUK	1,251,241	118	3	100%	43%	86%	98%	99%
MISSAN	1,040,440	11	1	100%	38%	100%	100%	100%
MUTHANNA	780,802	0.0000	1	100%	38%	75%	100%	100%
NAJAF	1,293,603	2	3	94%	39%	100%	94%	97%
NINEWA	3,290,611	23	1	96%	65%	89%	87%	100%
SALAHADIN	1,402,411	9	0.4	75%	38%	83%	75%	100%
SULAYMANI	1,753,018	25	1	100%	74%	74%	100%	100%
THI-QAR	1,772,302	9	3	98%	14%	60%	96%	100%
WASSIT	1166475	17	4	85%	40%	32%	85%	100%
Iraq	33,837,357	17	2	95%	49%	78%	91%	99%

** This figure represents lab confirmed+EPI linked +clinical measles. *** This figure represents non-measles suspect cases/100,000 population.

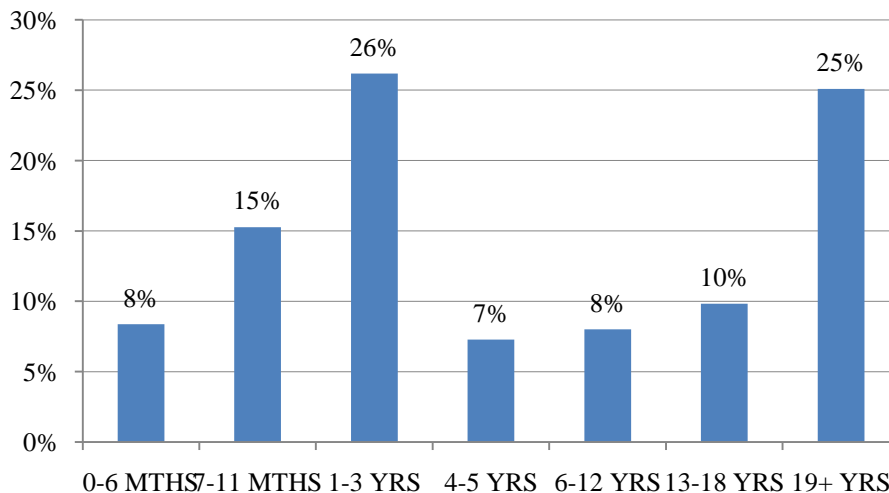
EMRO definition of complete investigation = DISTRICT + age + SEX + DRASH + VACCINFO (1 or 2) + DLM + MEASLES1 (1 or 2 or 3) if spec collected.

Red shading measles intense transmission, there is a need for urgent steps to improve routine measles coverage.

Yellow Shading Indicator not met.

Wasit; Salahaddin; Baghdad Resafa; have clear week measles surveillance **indicators**

Fig (1) Confirmed measles by agegroup first 42 weeks 2010



It is quite clear that around 8% of confirmed measles cases are still occurring among infants below the age of vaccination, while 49% of confirmed measles cases occur in the age group below 3 years of age. MoH is planning H to H immunization national campaign to immunize children 6 months to 3 years of age using mono-valent measles vaccine. This decision is quite wise since 41% of measles cases fall within the target age group.

33% of cases are occurring among 1-5 year old children which points to several weaknesses in routine and SIAs. 25% of confirmed measles cases in 2010 are among those above 19 year old young adults (obvious shifting toward older age groups), more effort is needed to target university students, military recruits and those leaving school but the priority is still for <3 children.

Fig (2) Laboratory confirmed measles; by international week; up to week 42 2010; Iraq

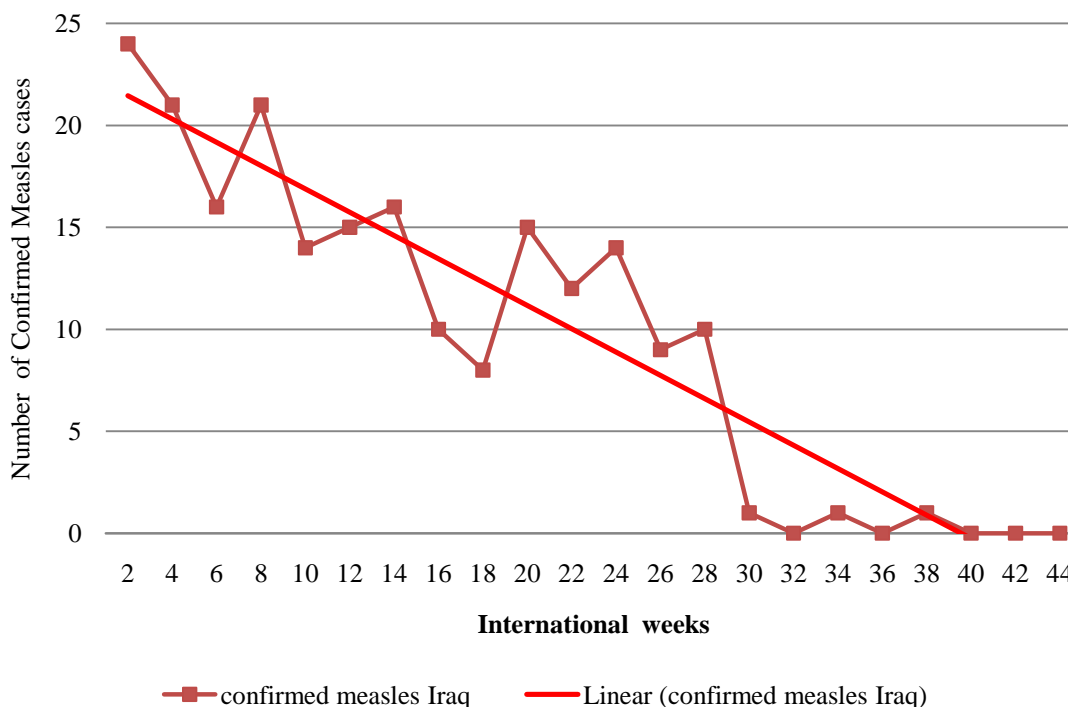


Fig (2) shows that following the control of the outbreak in Kirkuk and Ninewa, the overall measles trend in the country started to show a general downtrend. Measles outbreak has been under control since week 32, serious effort to stop the last chains of transmission have been done. However, DoHs, such as Erbil, Duhok and Sulymania should be on the alert.

Fig (3) shows that following the control of the outbreak in Kirkuk and Ninewa, the overall measles trend in the country started to show a general downtrend.

Fig (3) Confirmed measles cases by international weeks; kirkuk & Ninewa Provinces; up to week 40, 2010

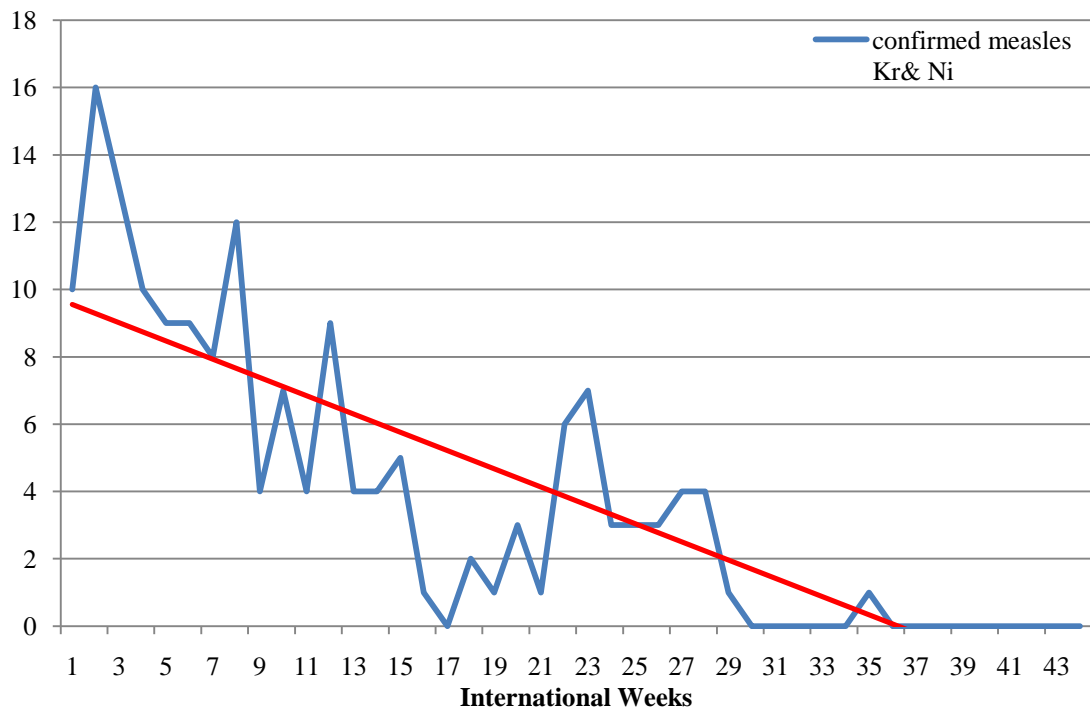


Fig (4) shows intense transmission in 9 DoH; although the outbreak has been controlled in all DoH; therefore any new confirmed case/s need to be thoroughly investigated to identify the sources and secondary cases.

Fig (4) Annulaized measles incid/million pop ulation, Iraq; up to week 42 of 2010

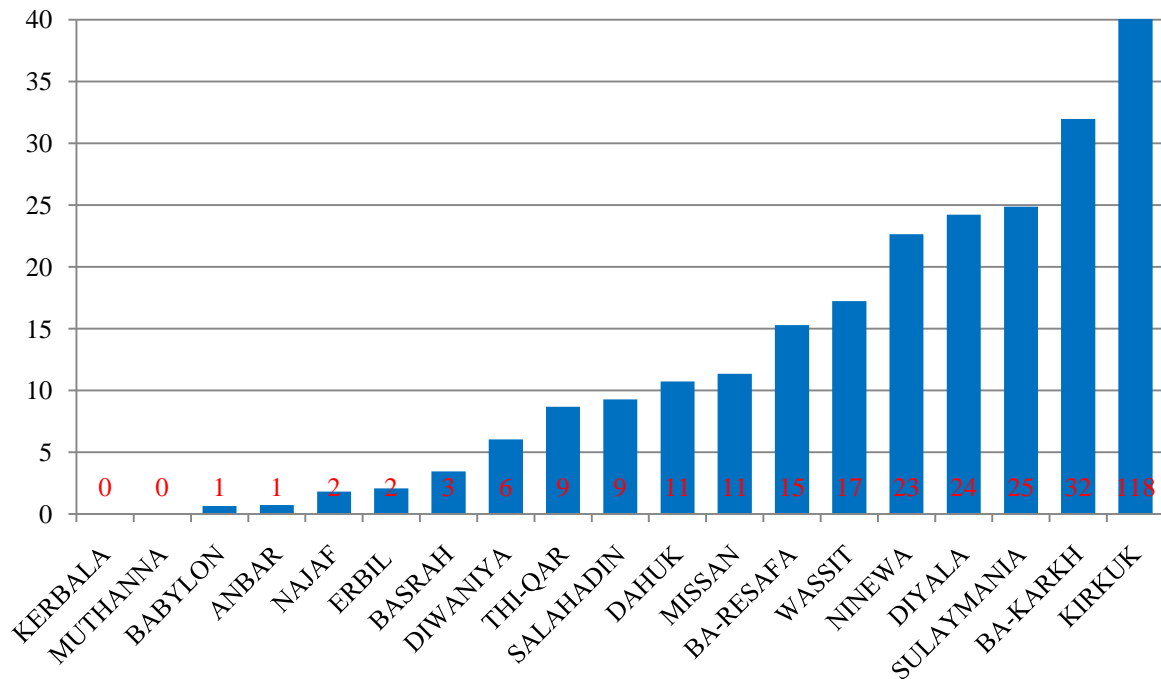
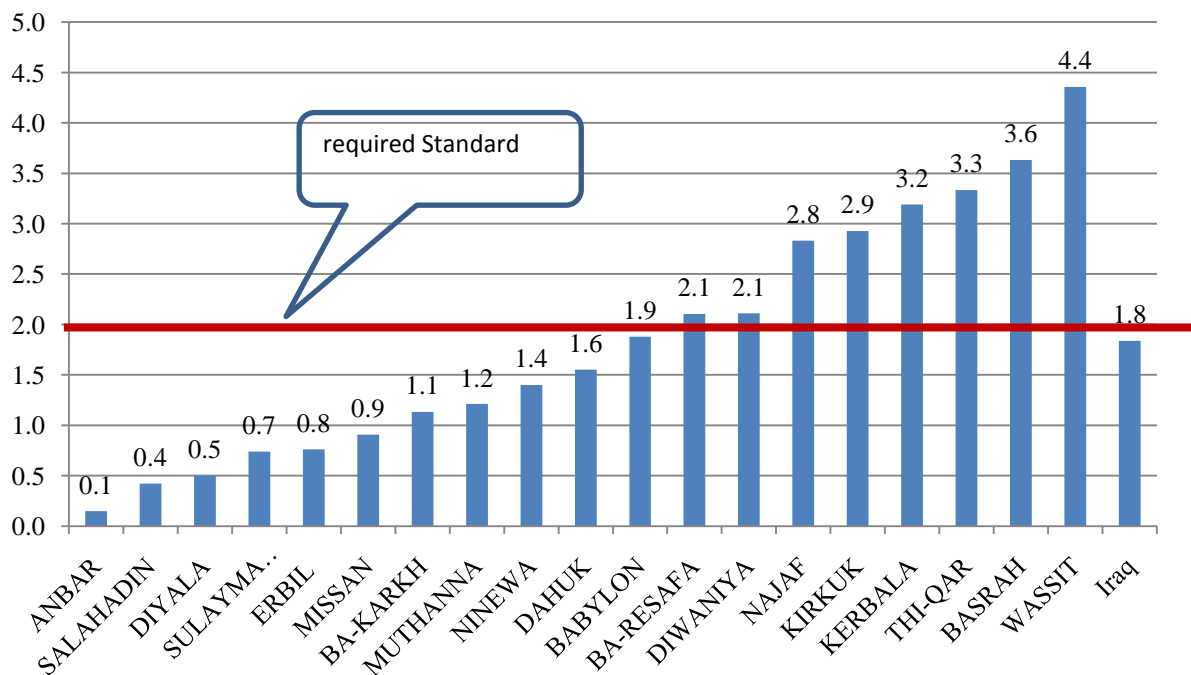


Figure (5) shows that the reporting rate is slightly below the acceptable level of 2/100,000 population in the country as a whole and another 11DoH. However in 8 DoH, effort is needed to maintain the required standard for adequate surveillance.

Fig (5) Annulaized non-measles rate /100,000 population ;first 42 weeks; 2010; Iraq



Confirmed measles cases Iraq, all 2009 and the first 44 weeks of 2010

