

Table (1) Measles weekly Bulletin WHO/MoH Iraq
Surveillance summary and analysis of selected performance indicators for measles/rubella surveillance-Iraq 2010 & 2011 up to week 16

Province	Suspect measles		Cases tested for measles		Measles lab confirmed		Total confirmed measles		Annualized Measles incidence/million		Annualized Measles reporting rate/100,000		Total rubella cases	
	2010	2011	2010	2011	2010	2011	2010	2011	2010	2011**	2010	2011**	2010	2011
ANBAR	2	3	0	3	0	0	0	0	1	0	0.2	0.7	0	0
BABYLON	19	5	18	5	0	0	0	0	0	0	2.0	1.0	1	0
BA-KARKH	42	23	26	20	6	0	6	5	24	5	1.4	1.8	0	0
BA-RESAFA	46	41	36	31	4	0	18	9	11	8	2.3	2.7	2	1
BASRAH	23	18	24	21	0	0	4	0	3	0	3.3	2.3	0	1
DAHUK	2	15	5	15	5	0	7	0	8	0	2.2	5.4	0	1
DIWANIYA	4	9	5	9	0	2	0	2	5	6	1.9	2.1	0	1
DIYALA	17	3	7	4	4	0	7	0	20	0	0.7	0.8	0	0
ERBIL	5	2	5	1	0	1	0	1	2	2	0.9	0.2	0	0
KERBALA	11	12	14	13	0	0	0	0	0	0	2.9	4.3	0	0
KIRKUK	94	11	78	11	65	0	67	0	90	0	3.1	3.1	0	0
MISSAN	11	15	1	15	0	0	0	0	7	0	2.3	5.1	0	0
MUTHANNA	1	12	1	14	0	0	0	4	0	18	1.3	3.6	0	0
NAJAF	12	7	14	11	0	0	2	0	1	0	2.4	1.9	0	0
NINEWA	81	16	68	17	45	0	58	0	17	0	1.4	1.7	1	0
SALAHADIN	3	3	2	1	2	0	6	2	7	5	1.1	0.3	0	0
SULAYMANIA	11	9	11	8	5	0	5	1	19	2	0.8	1.6	0	0
THI-QAR	21	30	18	27	0	0	1	5	7	10	4.0	5.0	0	0
WASSIT	32	41	16	44	1	1	8	1	14	3	3.8	12.2	1	0
IRAQ	437	275	349	270	137	4	189	30	13	3	1.97	2.0	5	4

Serious problems in measles reporting in one DoH

Blue shading measles surveillance need to be strengthened.

Yellow shading suspect current measles transmission; 4 DoH reported 12 cases but blood sample were collected and investigation form was received for only 4 cases. The remaining cases were diagnosed.

****Annualized data**

Red shading past intense measles transmission, Total confirmed measles= Total suspect measles-discarded. All notified cases without clinical, lab or Epi link are considered as confirmed.

Table (2) Cumulative measles/rubella case finding report up to week 16 year 2011

Province	Total population	Measles case finding report						Rubella case finding report			
		Suspect measles	Measles lab confirmed	MEAS EPI linked	MEAS CLIN diagnosed	Measles total confirmed	discarded measles	Rubella tested	Rubella Lab confirmed	rubella EPI linked	discarded rubella
ANBAR	1,459,895	3	0	0	0	0	3	3	0	0	3
BABYLON	1,671,267	5	0	0	0	0	5	5	0	0	5
BA-KARKH	3,252,109	23	0	0	6	5	18	18	0	0	18
BA-RESAFA	3,754,045	41	0	0	11	9	31	31	1	0	30
BASRAH	2,503,344	18	0	0	0	0	18	18	1	0	17
DAHUK	907,467	15	0	0	0	0	15	15	1	0	14
DIWANIYA	1,076,511	9	2	0	2	2	7	9	1	0	8
DIYALA	1,296,612	3	0	0	0	0	3	3	0	0	3
ERBIL	1,564,087	2	1	0	1	1	1	1	0	0	1
KERBALA	916,639	12	0	0	0	0	12	12	0	0	12
KIRKUK	1,146,310	11	0	0	0	0	11	11	0	0	11
MISSAN	953,187	15	0	0	0	0	15	15	0	0	15
MUTHANNA	715,323	12	0	0	1	4	8	8	0	0	8
NAJAF	1,185,120	7	0	0	0	0	7	7	0	0	7
NINEWA	3,014,656	16	0	0	0	0	16	16	0	0	16
SALAHADIN	1,284,803	3	0	0	2	2	1	1	0	0	1

SULAYMANI A	1,606,008	9	0	0	0	1	8	8	0	0	8
THI-QAR	1,623,674	30	0	0	4	5	25	25	0	0	25
WASSIT	1,068,653	41	1	0	0	1	40	41	0	0	41
IRAQ	30,999,711	275	4	0	27	30	186	247	4	0	243

Table (3) Cumulative measles/rubella case count and surveillance indicators up to week 16 of Year 2011

Province	Total population	*** Measles reporting rate	** Measles Incidence	Indicators target >80%				
				% of suspected tested for measles IgM	% with complete investigation	% specimens received at NML within 7 days	% adequate specimens	% results reported to EPI within 7 days
ANBAR	1,459,895	0.7	0	100%	33%	100%	100%	100%
BABYLON	1,671,267	1.0	0	100%	40%	20%	100%	100%
BA-KARKH	3,252,109	1.8	5	100%	50%	95%	100%	95%
BA-RESAFA	3,754,045	2.7	8	100%	32%	52%	100%	90%
BASRAH	2,503,344	2.3	0	100%	48%	95%	100%	100%
DAHUK	907,467	5.4	0	100%	27%	27%	100%	100%
DIWANIYA	1,076,511	2.1	6	100%	11%	33%	100%	100%
DIYALA	1,296,612	0.8	0	100%	50%	100%	100%	100%
ERBIL	1,564,087	0.2	2	50%	50%	100%	50%	100%
KERBALA	916,639	4.3	0	93%	29%	100%	100%	100%
KIRKUK	1,146,310	3.1	0	100%	73%	82%	100%	100%
MISSAN	953,187	5.1	0	100%	7%	93%	93%	100%
MUTHANNA	715,323	3.6	18	100%	14%	86%	100%	93%
NAJAF	1,185,120	1.9	0	100%	36%	100%	100%	100%
NINEWA	3,014,656	1.7	0	100%	53%	76%	94%	100%
SALAHADIN	1,284,803	0.3	5	100%	100%	0%	100%	100%
SULAYMANI	1,606,008	1.6	2	100%	63%	75%	100%	100%
THI-QAR	1,623,674	5.0	10	100%	0%	52%	96%	93%
WASSIT	1,068,653	12.2	3	100%	32%	48%	100%	100%
IRAQ	30,999,71	2.0	3	99%	33%	68%	99%	97%

**** This figure represents lab confirmed + EPI linked +clinical measles. *** This figure represents non-measles suspect cases/100,000 population.**

EMRO definition of complete investigation = district + age + sex + drash + vaccinfo (1 or 2) + DLM + MEASLES1 (1 or 2 or 3) if spec collected.

Red shading measles intense transmission is suspected, there is a need for urgent steps to improve routine measles coverage.

Yellow Shading Indicator not met.

Wasit; Salahaddin; Muthana; have clear week measles surveillance indicators

Fig (1) Suspect measles cases by Age group; first 16 weeks; 2011; Iraq

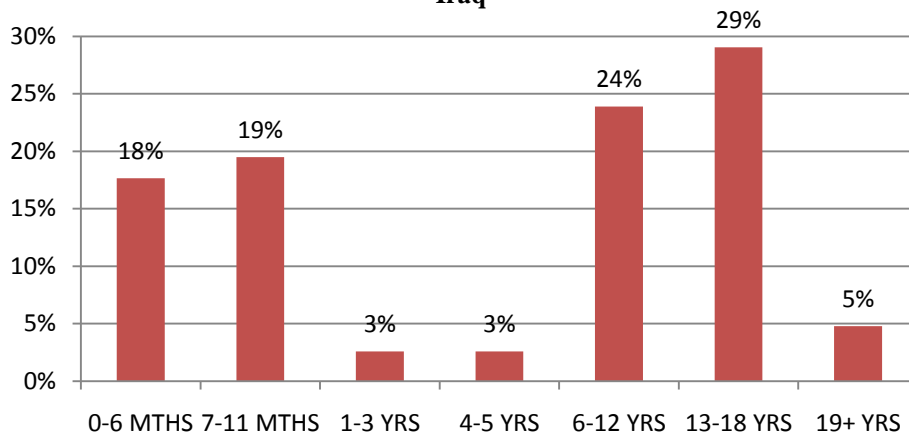


Fig (1) shows that 37% of suspect measles cases are still occurring among infants below the age of 11 months, while 43% of suspect measles cases occur in the age group below 5 years of age. MoH has completed an H to H immunization national campaign to immunize children 6 months to 3 years of age using mono-valent measles vaccine. The good news is that there are only 4 laboratory confirmed cases. All cases that have specimens 270 were found negative by NML except 4. However; for 26 cases, no specimens were collected and the investigation was not adequate, therefore, they were considered as clinically positive; which points to several weaknesses in the surveillance system in the 6 provinces that did not collect specimen nor sent a complete case investigation form.

Fig (2) Annualized measles incid/million pop ulation, Iraq; 2011 first 16 weeks

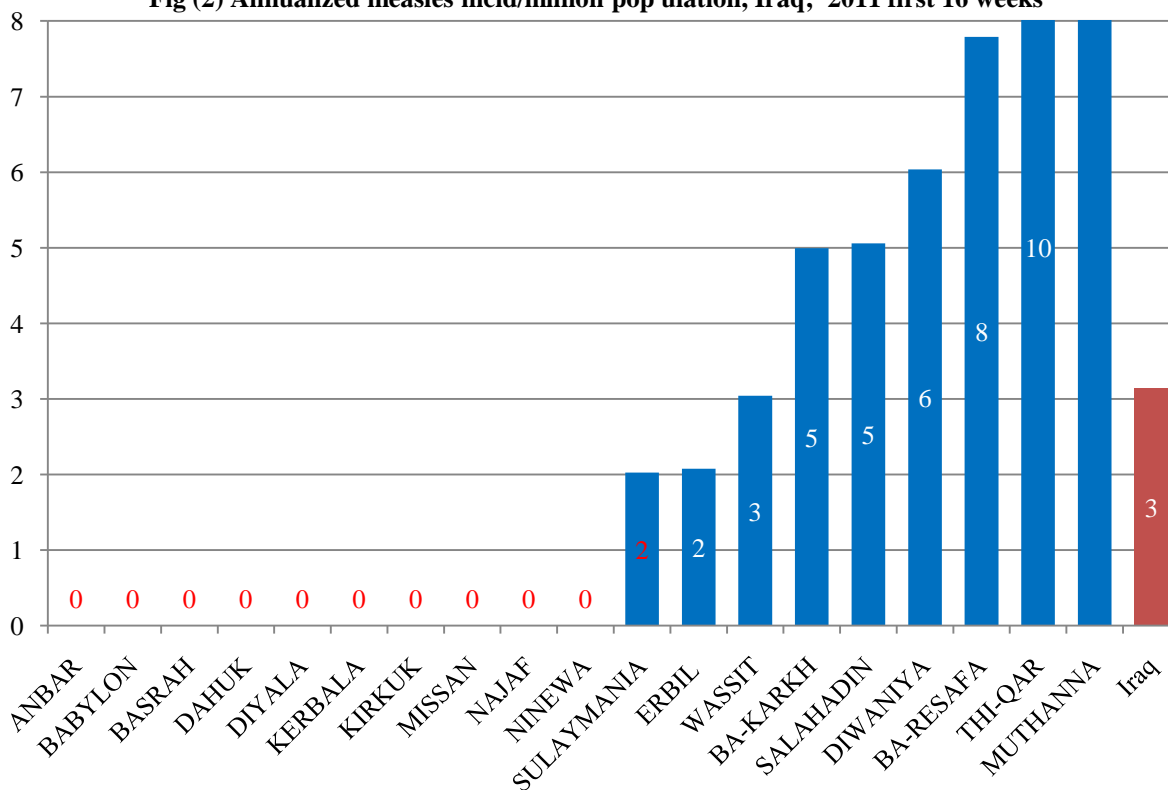


Fig (2) shows 9 DoH in which measles transmission is considered as still ongoing. All cases were clinically diagnosed since the 8 provinces that were not able to collect blood specimens from the cases. It must be

mentioned that all cases (270) for which specimens were collected tested negative to measles and rubella IgM except 4 were positive 2 from Diwaniya; and one from each of Erbil and Wasit.

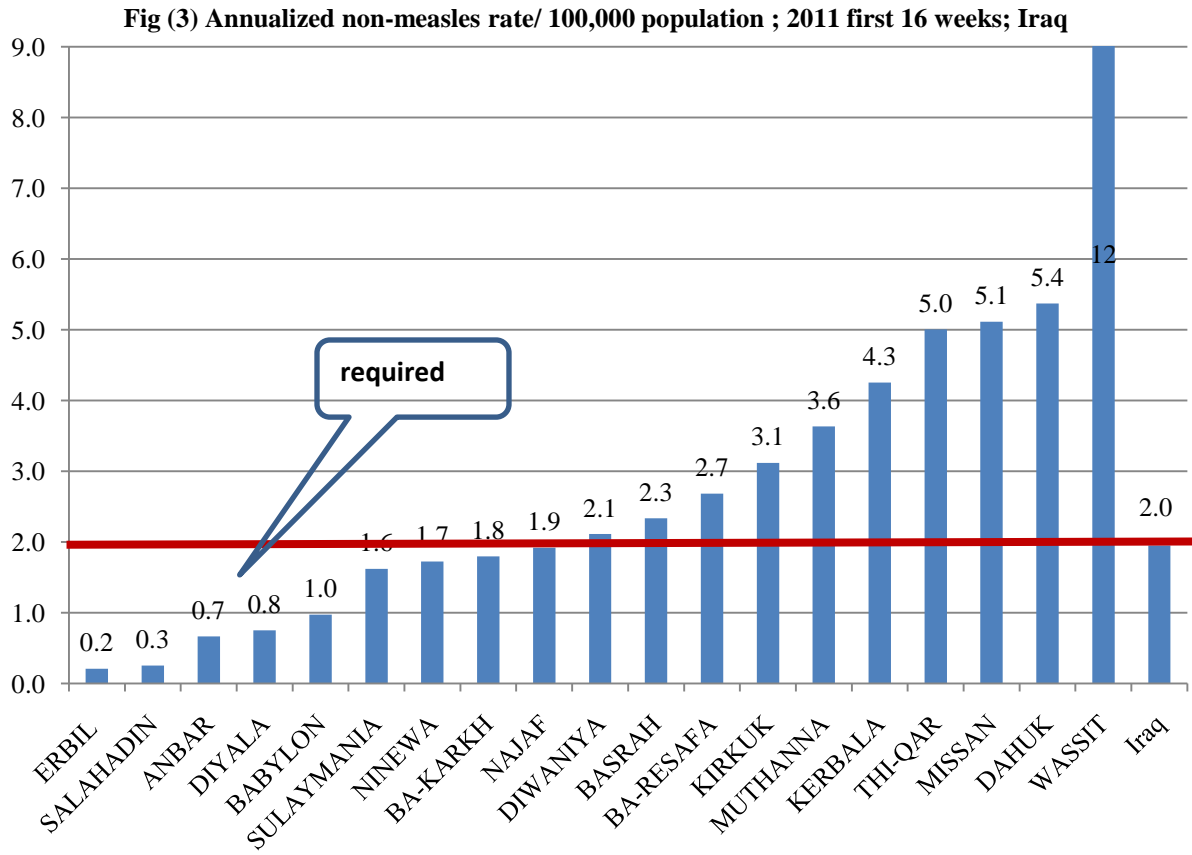


Figure (3) shows that the reporting rate is slightly below the acceptable level of 2/100,000 population in 8 DoHs.

Confirmed measles cases Iraq, all 2010 and 2011

