

Weekly AFP surveillance feedback for Iraq; report 109 for international week 16 ending 25/04/2010

1. Annualized AFP rate/100,000 in children under 15 years of age, by province Fig (1):

During the first 16 weeks of 2010, 140 AFP cases were reported from all DoHs, The AFP rate of 2 per 100,000 for population under 15 years of age Fig (1) has been attained for the country as a whole and another 11 DoHs.

Chart (1) Annualized AFP rate by province, Iraq, first 16 weeks, 2010

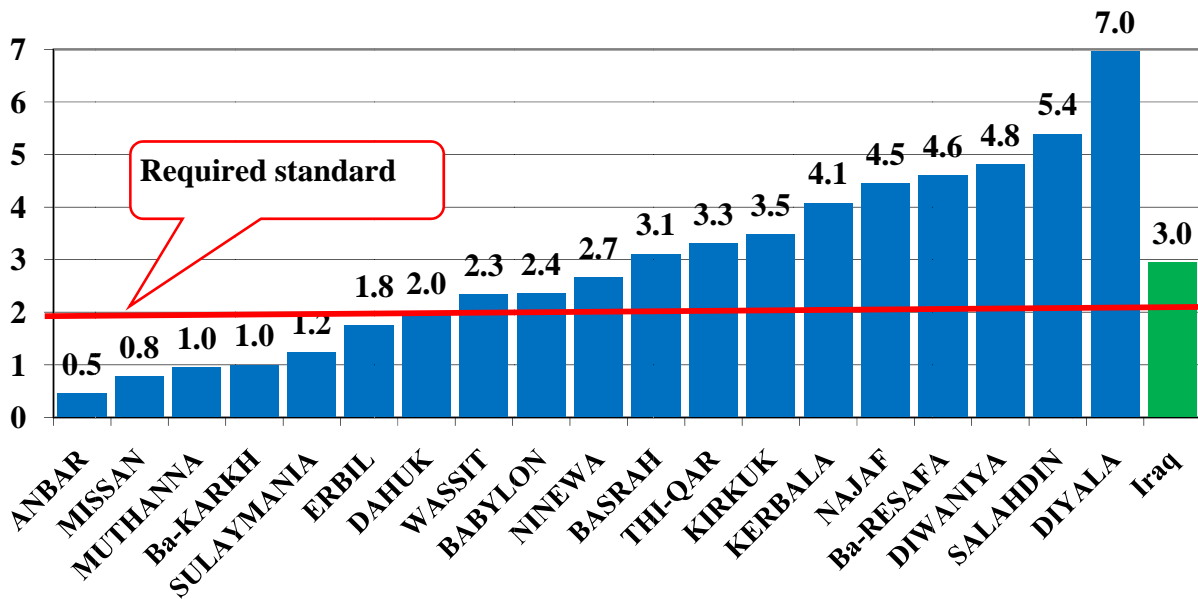
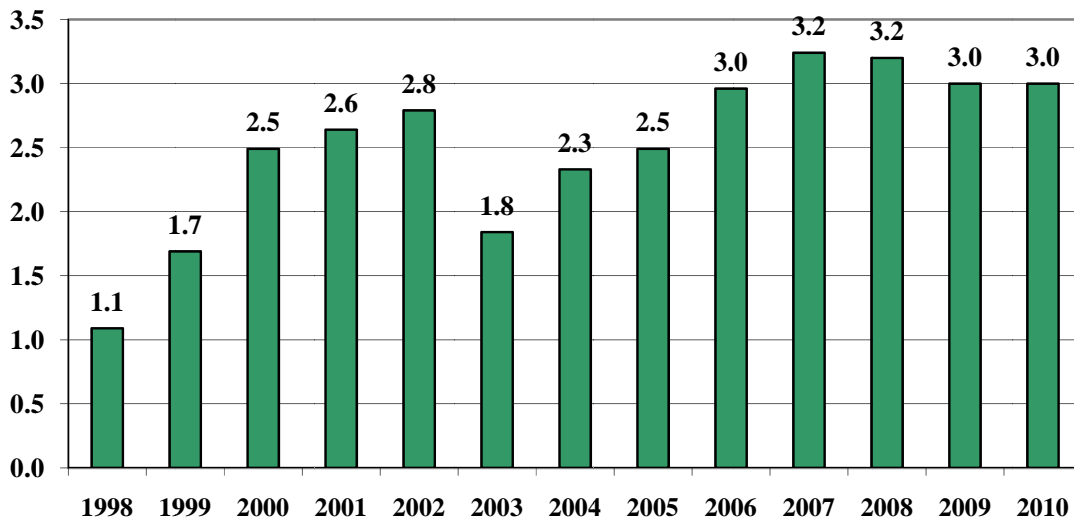


Fig (2) Non-polio AFP rate/100,000 children under 15 years, IRAQ, 99-2010*



*First 16 weeks

Table (1): show that performance in 6 DoH is below the expected. In general the following is noted:

- 11 DoH reported more than what is expected.
- More effort is needed in 5 DoH colored red in Table one.
- Dahuk; and Erbil DoHs are within the expected' level.

Table (1) Expected and reported AFP cases, by province, first 16 weeks, 2010.

Province	Reported AFP cases	Expected cases
ANBAR	1	4
Ba-KARKH	5	8
Sulymania	3	4
Muthana	1	2
Wasit	4	3
DAHUK	3	3
ERBIL	4	4
SALAH-DIN	10	3
NINEWA	12	8
BABYLON	6	4
Ba-RESAFA	27	10
BASRAH	12	6
DIWANIYA	08	3
DIYALA	14	4
KERBALA	6	3
KIRKUK	6	3
NAJAF	8	3
THI-QAR	9	4
Iraq	140	81

Table (2) Reported AFP Cases first 16 weeks of 2009 and 2010, Iraq

International week	2010	2010
Week 1	3	5
week 2	13	8
Week 3	6	9
week 4	11	8
Week 5	4	5
week 6	13	9
Week 7	5	12
week 8	2	8
Week 9	6	5
Week 10	9	9
Week 11	12	12
Week 12	7	12
Week 13	7	9
Week 14	9	13
Week 15	10	9
Week 16	3	7
Total	120	140

Table (3) Reported AFP cases, first 16 weeks; 2005 -2010

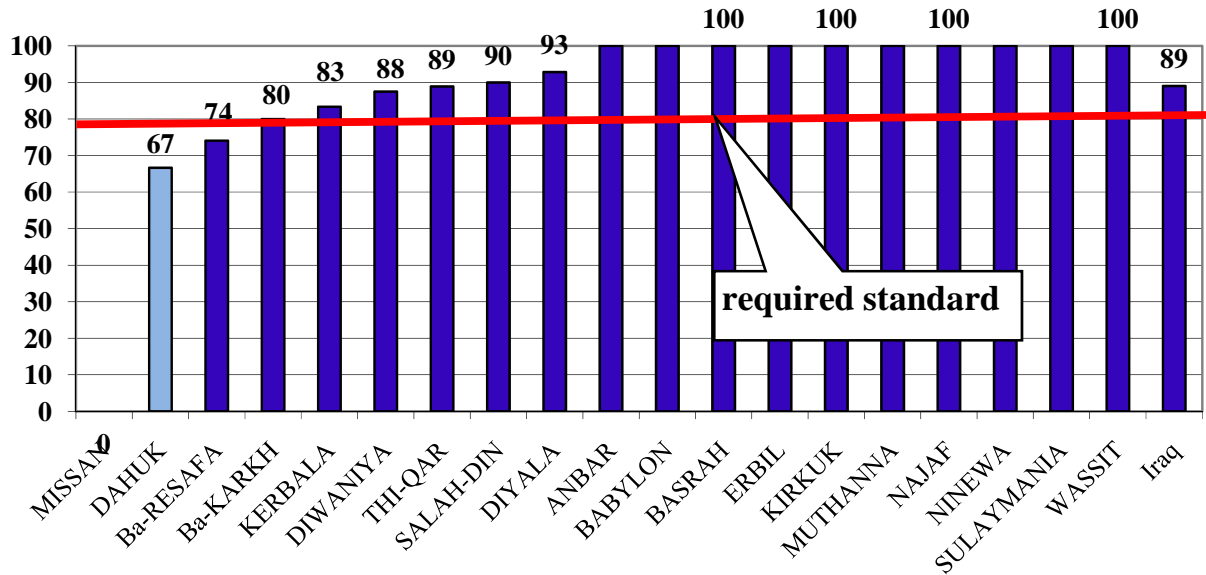
Year	2005	2006	2007	2008	2009	2010
------	------	------	------	------	------	------

Cumulative, up to Week 09	102	146	115	148	120	140
----------------------------------	-----	-----	-----	-----	-----	-----

The number of AFP cases reported in the first 16 weeks of 2010 are more than what has been reported during all previous years except 2008 and 2006.

2. Stool adequacy,

Chart (3) % AFP cases with 2 stool specimens collected within 14 days of onset and at least 24 hours apart; first 16 weeks of 2010



3. Errors

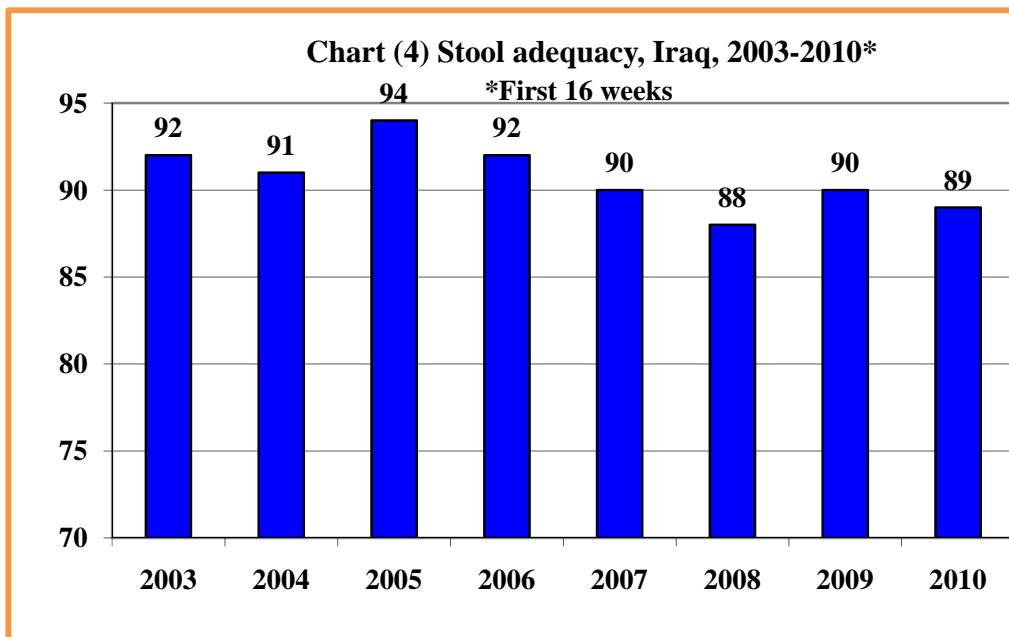
DoH	Error	Error
IRQBG10009	<i>Error6</i>	<i>Error 7</i>
IRQTA10003	<i>Error5</i>	
IRQDY10003	<i>Error5</i>	
IRQNI10002	<i>Error5</i>	

Error5 = Pending classification and date of onset more than 90 days ago

Error6 = Date of stool collection more than 45 days ago and pending preliminary culture results

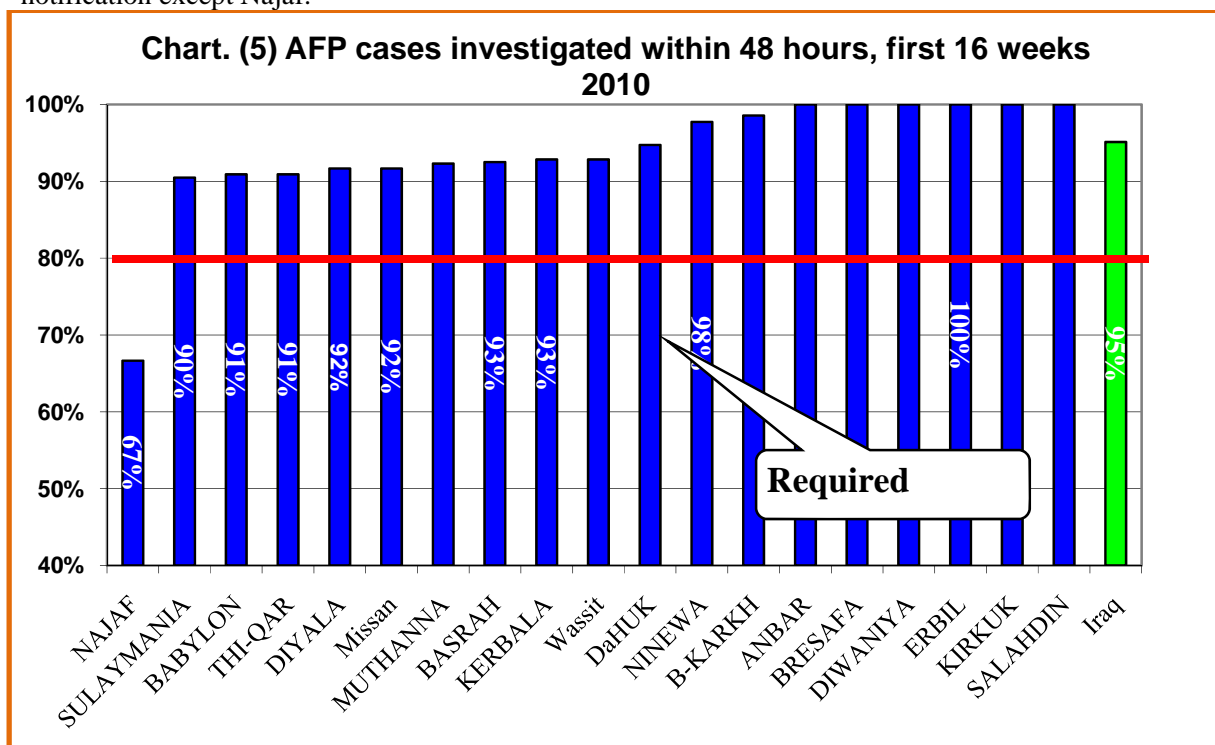
Error7 = Date of stool collection more than 45 days ago and no date of culture result

Chart (3) illustrates the fact that all DoHs that reported cases, except Missan; achieved the standard target of reporting => 80% stool adequacy of AFP cases.



3. Timely investigation:

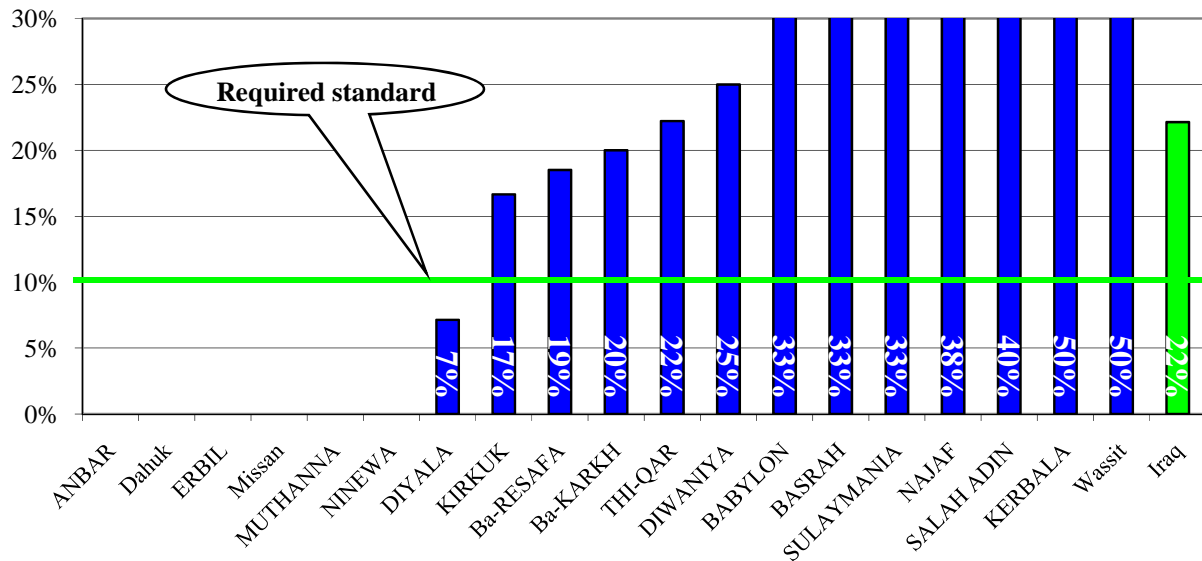
Fig (5) below shows that all provinces achieved the indicator for investigation of cases within 48 hours of notification except Najaf.



4. Non-polio entérovirus isolation rate:

The NPEV isolation rate for the country as a whole is 22%

Non-polio enterovirus isolation rate; by province; first 16 weeks of 2010

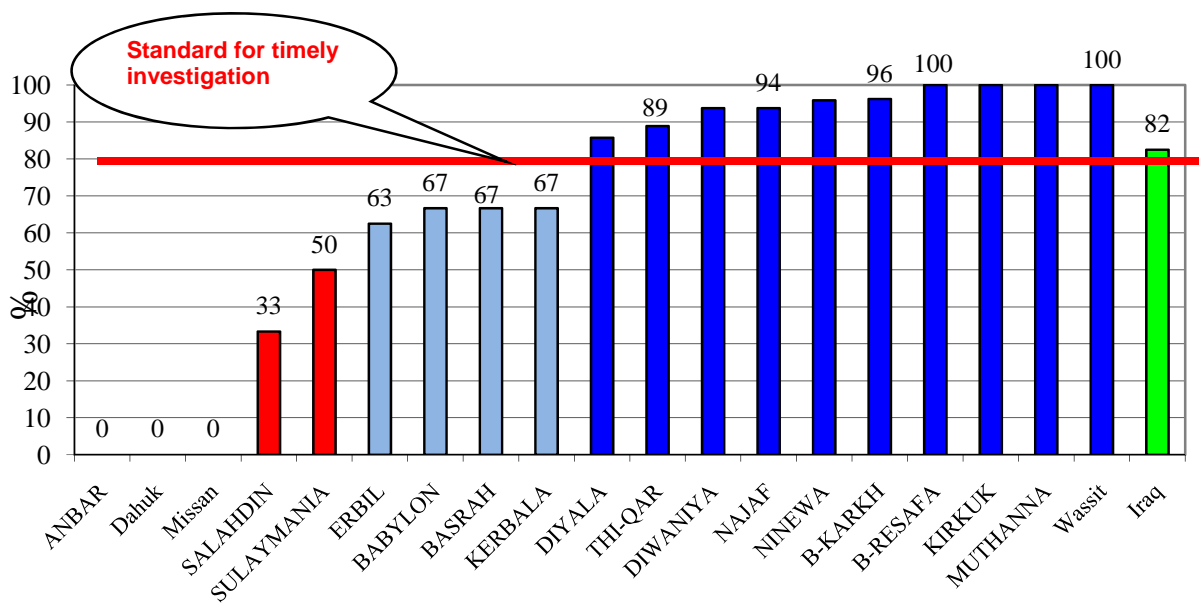


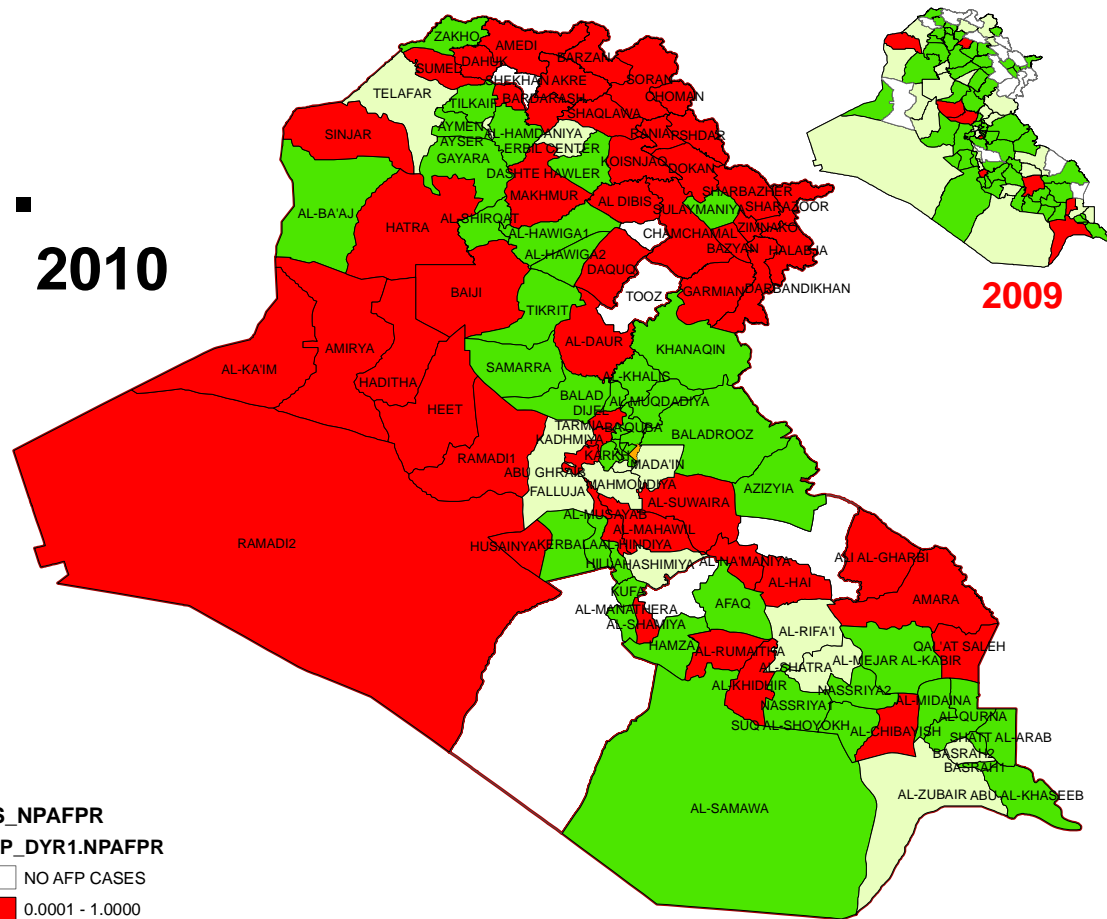
The Non-Polio enterovirus isolation rate for the country as a whole and 12 DoHs is above the required standard.

5. Time between collection of first stool and receipt in the NPL

Chart (8) shows the period in days between receipt of stool specimens in NPL and collection of first stool specimen. The country as a whole and another 10 DoHs attained the required standard of sending at least 80% of specimen to the NPL within 3 days of collection of first stool specimens. However, 9 doHs need to exert more effort to attain the required standard.

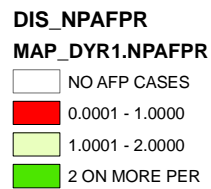
Chart (8) % stool specimens received in NPL within 3 days of first stool collection; first 16 weeks, 2010



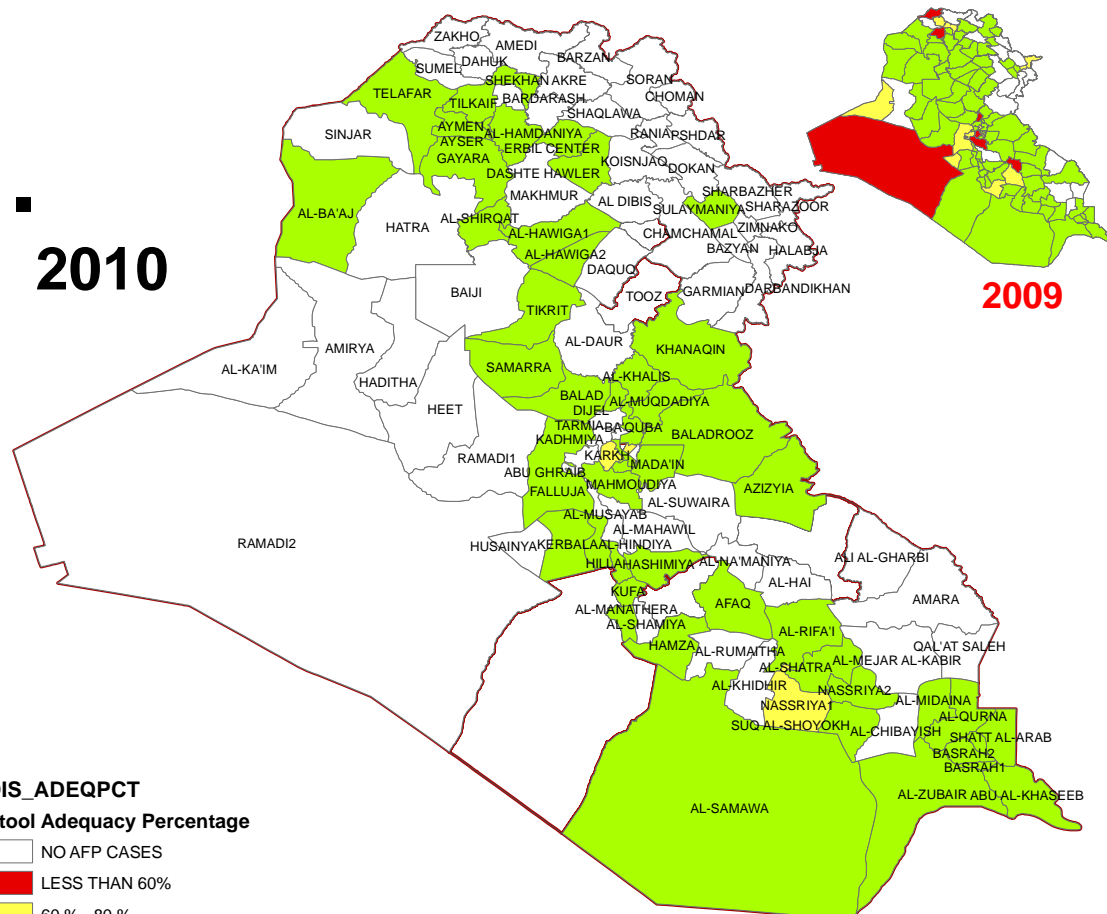


2010

2009



NPAF rate by district, 2009 and first 16 weeks of 2010



DIS_ADEQPCT
Stool Adequacy Percentage

- NO AFP CASES
- LESS THAN 60%
- 60% - 80%
- 80% - 100%

Stool Adequacy by district, 2009 and first 16 weeks of 2010