

In January 2020, many countries reported data to FluNet and EMFLU, namely Afghanistan, Bahrain, Egypt, Iran (Islamic Republic of), Iraq, Jordan, Kuwait, Lebanon, Morocco, occupied Palestinian territory (oPt), Oman, Pakistan, Qatar, Saudi Arabia, Sudan, Syrian Arab Republic, Tunisia, United Arab Emirates and Yemen.

The proportion of tested cases for influenza in the Region was 92% out of 16 104 enrolled cases; 28.6% of cases tested positive and 71.4% tested negative.

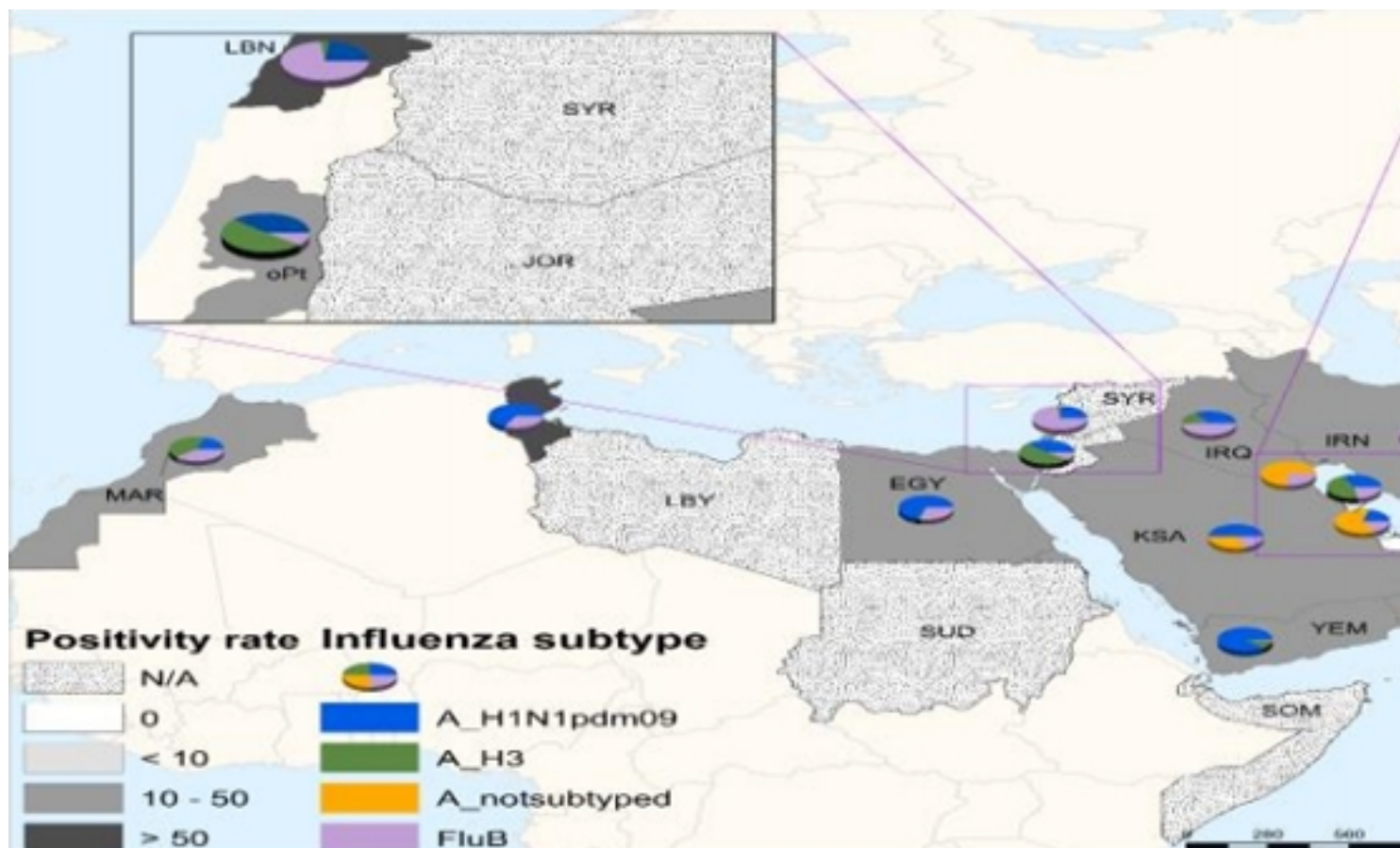


Figure 1: Influenza geographic spread by type and subtypes

**Influenza activity by sub-type**

In northern Africa, influenza activity continued to decrease in Egypt, Morocco and Tunisia with influenza A(H1N1)pdm09 and Influenza B most frequently detected.

In western Asia, influenza activity remained elevated in Iraq and Qatar, with influenza A(H1N1)pdm09 and B viruses co-circulating. In Kuwait, Oman and Saudi Arabia, influenza activity continued to decrease with detections of both influenza A and B viruses. In Lebanon and oPt, influenza detections of predominately B viruses and predominately A viruses appeared to decrease at the end of the month respectively.

In southern Asia, influenza activity remained elevated in with influenza B most frequently detected in the Islamic Republic of Iran. In Afghanistan and Pakistan, influenza activity continued to decrease with influenza A and B viruses co-circulating.

[Source of transmission zones](#)

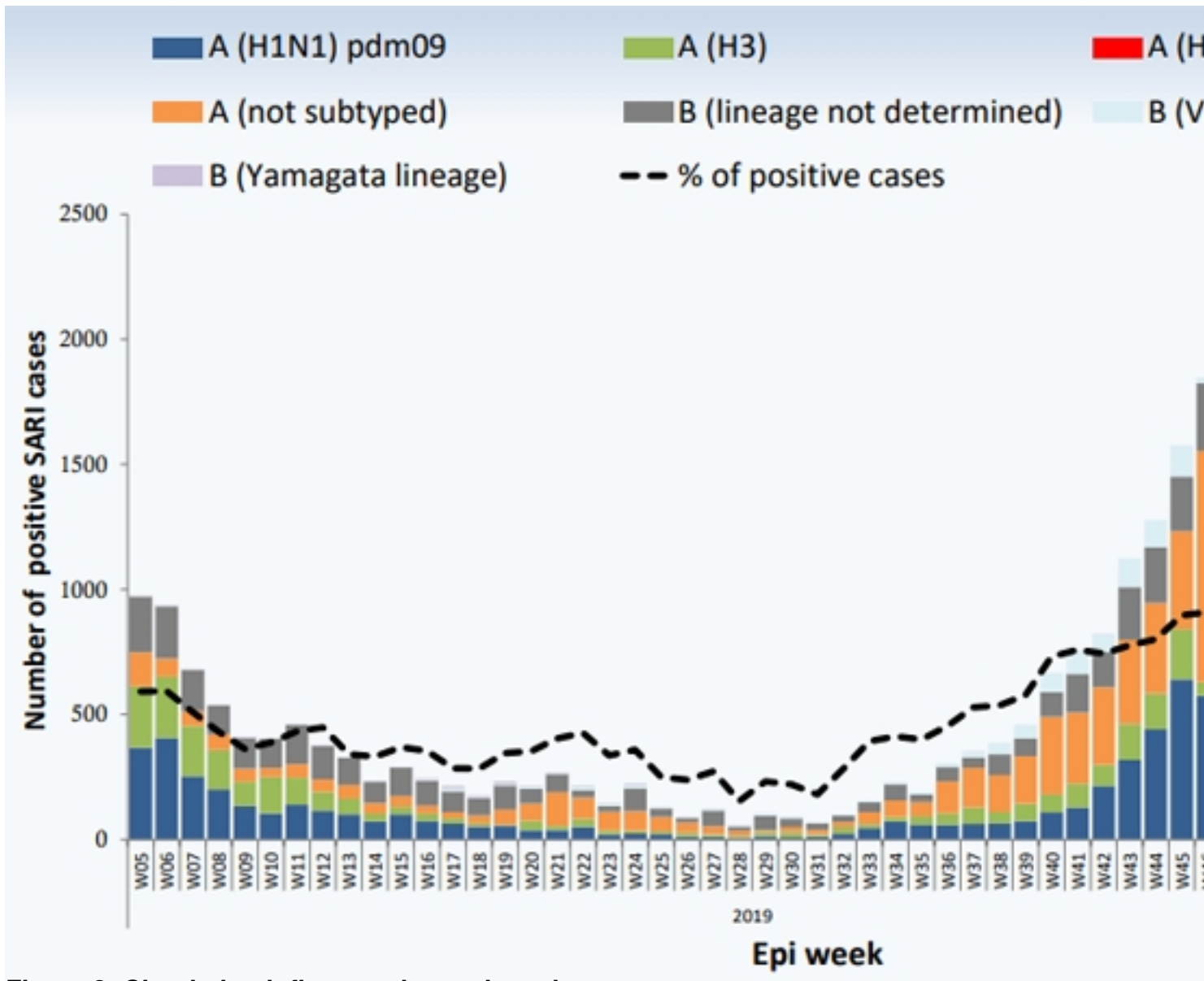


Figure 2: Circulating influenza viruses by subtype

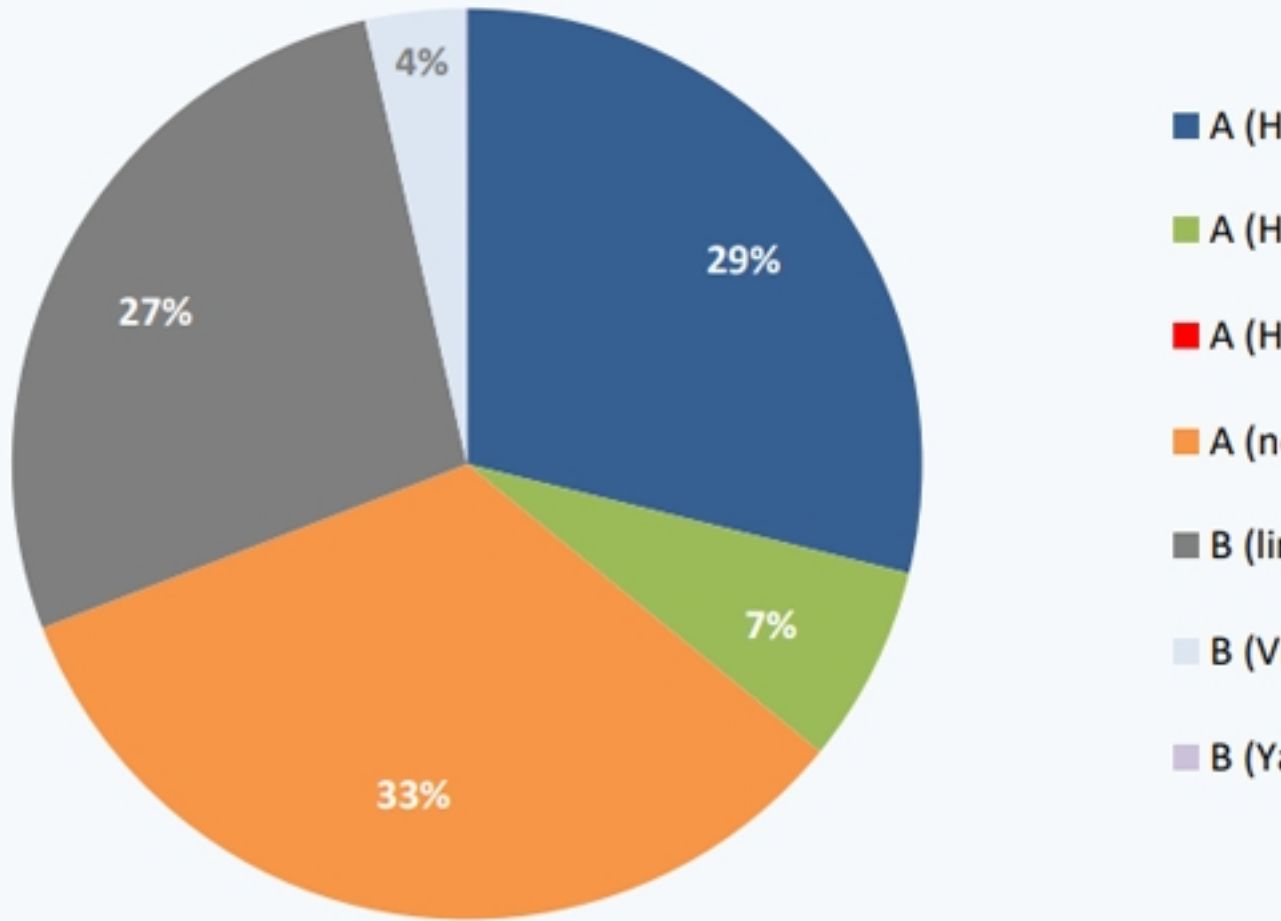


Figure 9: Circulating influenza viruses in the EMR by subtype  
Source: WHO, 16 May 2020, <https://www.who.int/emro/communicable-diseases/diseases/influenza>