

## Highlights

-

A total of 8 laboratory-confirmed cases, including 2 deaths, were reported in Saudi Arabia in the past week.

-

Primary cases continue to increase in several locations in the country.

-

The majority of cases continue to be male.

-

The most affected age group among primary cases is those between 50 and 59 years old.

-

The most affected age group among secondary cases is those between 30 and 39 years old.

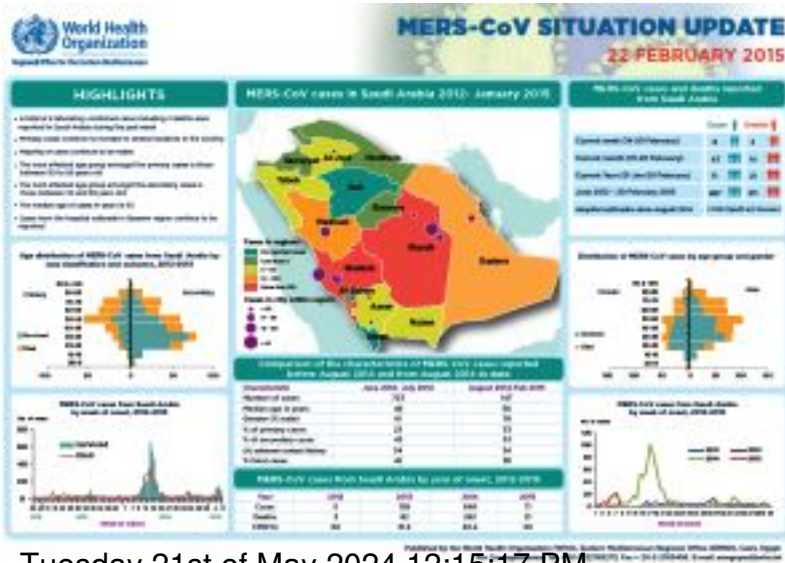
-

The median age of cases in years is 50.

-

Cases from the hospital outbreak in Qaseem region continue to be reported.

[Click on image to enlarge](#)



Tuesday 21st of May 2024 12:15:17 PM