

The coronavirus disease COVID-19 continues to spread at the regional and global levels. As of 26 February 2022, the global cumulative incidence reached 434 154 739 reported cases and 5 944 342 associated deaths with a case-fatality ratio (CFR) of 1.5%. Meanwhile, the 22 countries of the Eastern Mediterranean Region (EMR) have reported a total of 21 130 608 cases, which represent about 5% of the global count, with 333 296 associated deaths (CFR 1.6%). Most countries in the Region are in the community transmission phase.

Since the beginning of the outbreak, the country that has reported the highest number of total cases in the Region is Islamic Republic of Iran (7 030 943 cases; 33.2% of the Region's total), followed by Iraq (2 300 645; 11%) and Jordan (1 617 178; 7.6%). Islamic Republic of Iran also reported the highest number of total associated deaths (136 390; CFR 1.9%) followed by Pakistan (30 173; CFR 2%) and Tunisia (27 773; CFR 2.8%). The highest CFRs were reported by Yemen (18%) followed by Sudan (6.4%), while the lowest CFRs were reported by Qatar (0.2%), United Arab Emirates and Bahrain (0.3% for both).

During epidemiological week 8, the Region reported a decrease in cases of 38% when compared to the previous week (300 079 cases compared 472 039 to cases). A decrease of 4% was observed for associated deaths (3127 deaths compared to 3261 deaths).

Bahrain, Jordan and Lebanon reported the largest relative increase in COVID-19 activity in week 8. The cumulative number of cases increased from 488 423 to 509 390 in Bahrain (a 4.1% weekly increase), from 1 560 822 to 1 617 178 in Jordan (a 3.5% weekly increase) and from 1 043 028 to 1 065 307 in occupied Palestinian territory (a 2.1% weekly increase). Islamic Republic of Iran, Afghanistan and Saudi Arabia had the largest relative increase in deaths.

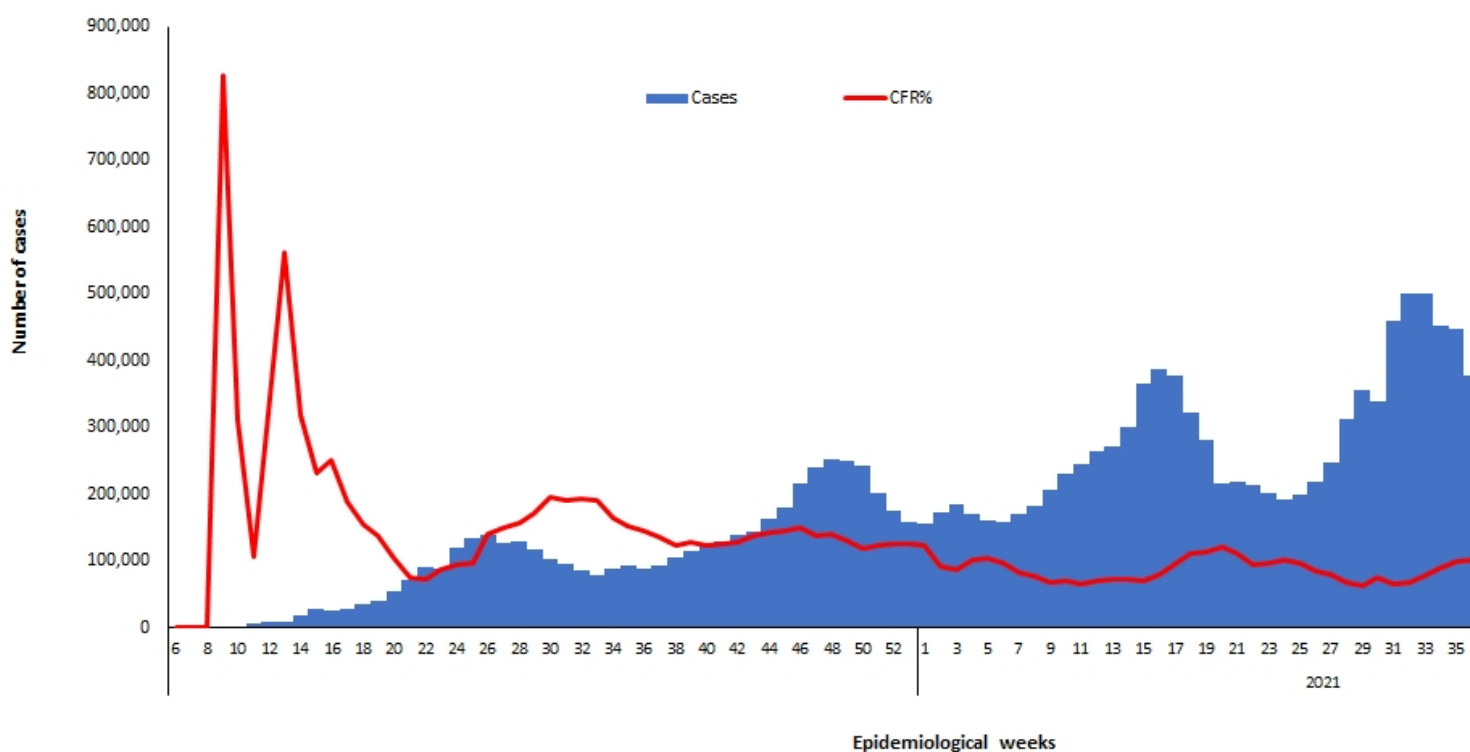
In terms of testing, a total of 347 209 478 laboratory PCR tests were conducted since the start of the outbreak across the Region including tests 5 446 344 in week 8, which shows a 12% decrease compared to the previous week when 5 731 653 tests were conducted. The highest number of PCR tests were reported from United Arab Emirates (137 million), followed by Islamic Republic of Iran (47.2 million) and Saudi Arabia (40.7 million). The average positivity rate for the Region is 5.8%. WHO recommends a positivity rate of around 3–12% as a general benchmark indicating adequate testing, which was achieved in most countries of the Region.

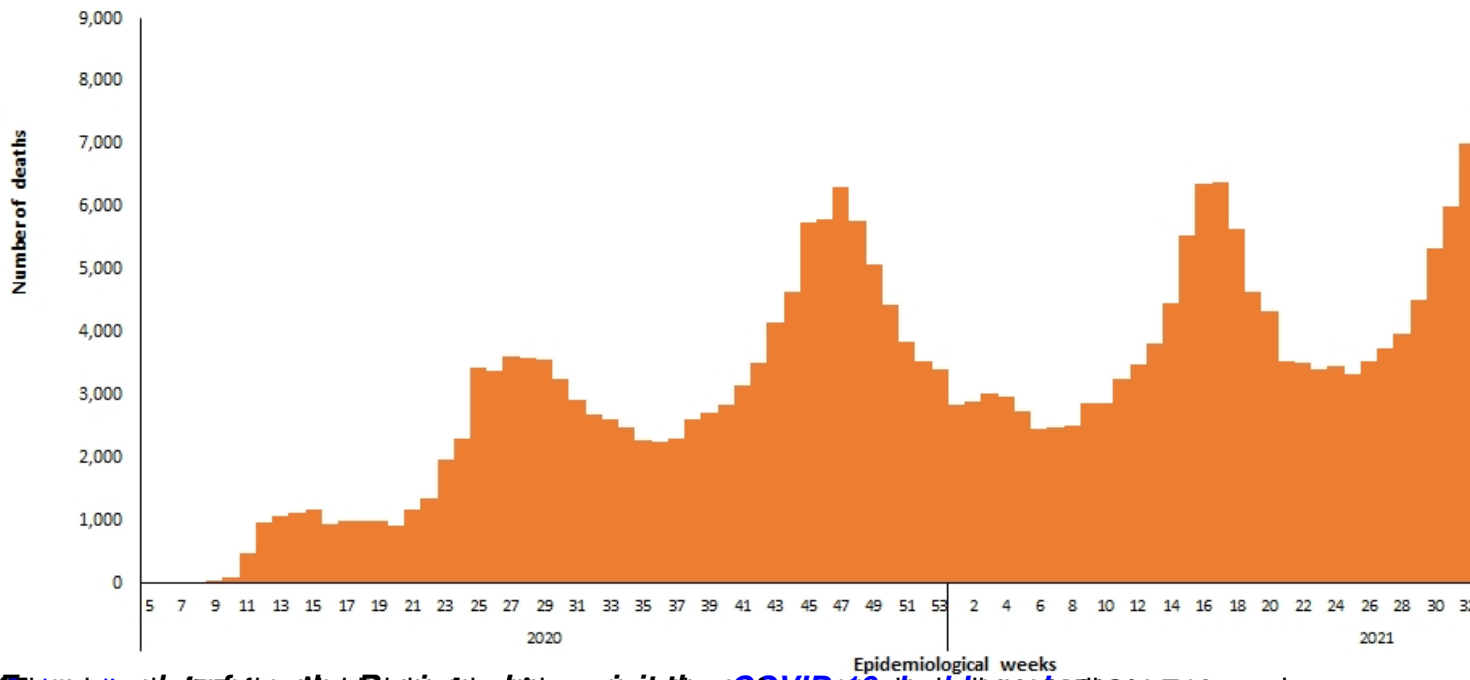
Meanwhile, COVID-19 vaccination continues across the Region. The total number of doses

administered so far in the 22 countries is 654 786 702. Pakistan has administered the highest number of doses at 210 366 776, followed by Islamic Republic of Iran at 140 619 255 and Egypt at 70 684 545. On the other hand, the total number of administrated doses in Sudan is 5 711 034, in Libya is 3 317 184, in Syria is 3 260 004, in Somalia is 1 838 348, in Yemen is 772 574 and in Djibouti is 160 742.\*

### Supporting countries in the Region

The regional incident management support team continues to coordinate the response and provide technical support to countries and partners in the Region in the areas of coordination and partnership, surveillance, laboratory capacity, clinical management, infection prevention and control, risk communication and community engagement, points of entry according to the International Health Regulations (2005), research, health systems, and essential health services among others.





[Source: Data from the Region, updated as of week 8 \(20–26 February 2022\). See \[epidemiological week 8\]\(#\) for details on the data and the \[methodology\]\(#\) used to calculate the \[COVID-19 death toll\]\(#\) in the Region.](#)