

As of 25 November 2023, the global cumulative incidence of COVID-19 reached 772,096,241 reported cases and 7,003,409 associated deaths with a case-fatality ratio (CFR) of 0.91%. Meanwhile, the Eastern Mediterranean Region (EMR) has reported a total of 23,406,133 cases representing 3.03% of the global count, with 351,800 associated deaths (CFR 1.5%). Most countries in the Region are in the community transmission phase. This report does not represent the accurate COVID-19 burden in the EMR given that updates are not regularly received from all 22 Member States (Table 1).

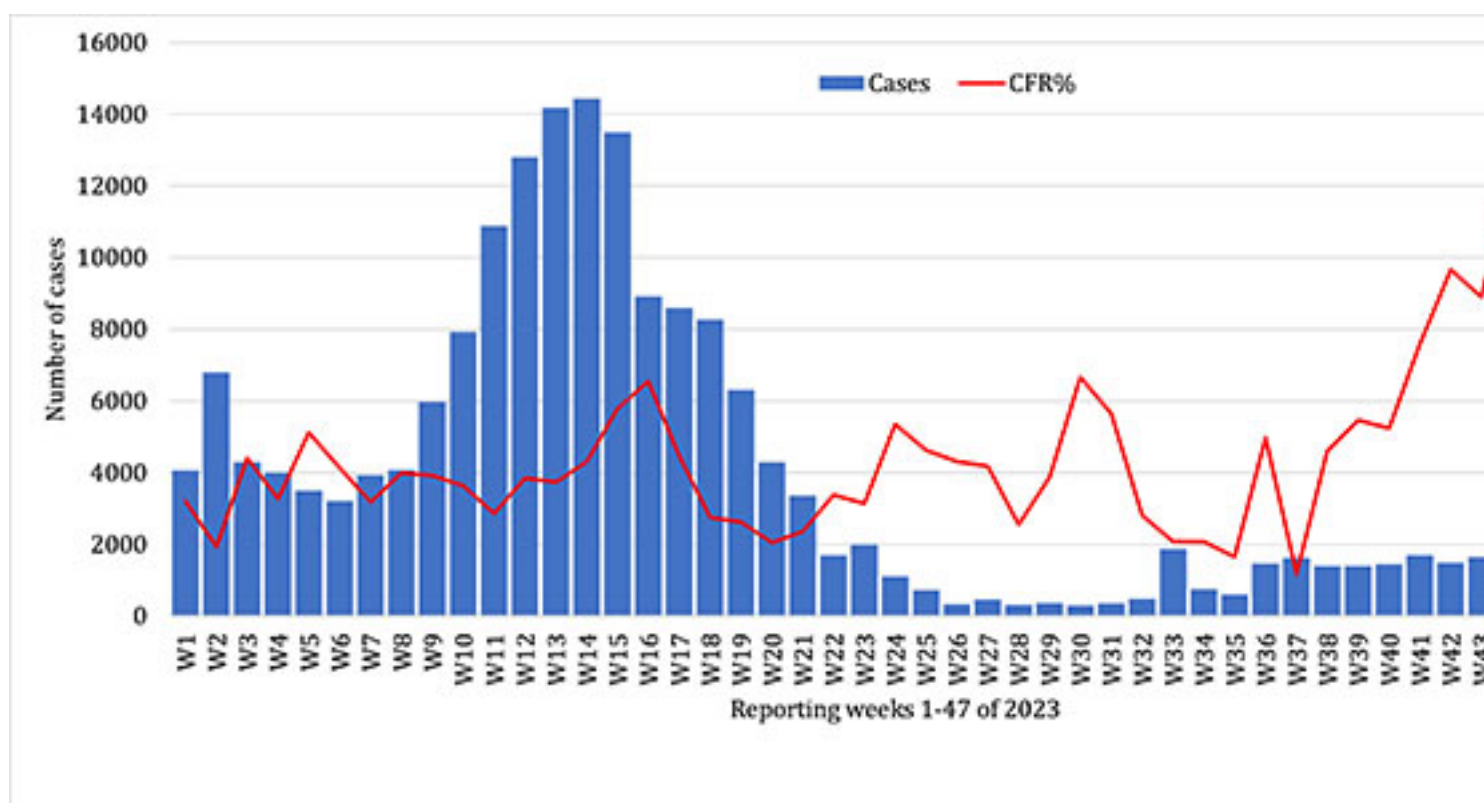
Country	Indicator	Cumulative	Week 42	Week 43	Week 44	Week 45	Week 46	Week 47	Weekly Trend
Globl	Cases	772096241	147550	148234	146586	137217	159393	113130	
	Deaths	7003409	2765	1037	1025	831	956	421	
	CFR	0.91%	1.87%	0.70%	0.70%	0.61%	0.60%	0.37%	
EMR	Cases	23406133	1506	1643	1284	1266	908	697	
	Deaths	351800	50	51	56	33	27	19	
	CFR	1.5%	3.3%	3.1%	4.4%	2.6%	3.0%	2.7%	

Table 1: COVID-19 cases, deaths, and CFR, global and EMR, as of 25 November 2023

During the epidemiological week 46 of 2023, a total of 697 lab-confirmed COVID-19 cases and 19 associated deaths (CFR: 2.97%) were reported from 4 Member States: Afghanistan (389 cases; 2 death), IR Iran (295 cases; 17 deaths), Kuwait (9 cases; 0 death) and Morocco (104 cases; 0 death). This indicates a 23% and 30% decrease in the number of cases and deaths respectively compared to week 44.

A total of 52,082 COVID-19 PCR tests were conducted this week in the 3 Member States (Positivity Rate: 1.34%) which indicates a 29% decrease in the number of tests compared to the previous week. This brings the cumulative number of COVID-19 laboratory tests in EMR to 450,256,511 (positivity rate 5.2%) since the start of the pandemic. The highest number of PCR tests were reported from the United Arab Emirates (UAE) (200,761,593; 44.6%), followed by IR Iran (58,066,426; 12.9%), and Saudi Arabia (45,484,848; 10.1%). WHO recommends a positivity rate of around 3–12% as a general benchmark indicating adequate testing, which was achieved in most countries of the Region.

Since the beginning of the pandemic, the highest number of total cases in the Region was reported by IR Iran (7,624,407; 32.57% of the Region’s total), followed by Iraq (2,465,545; 10.53%), and Jordan (1,746,997; 7.46%). IR Iran also reported the highest number of total COVID-19- associated deaths (146,705; 41.70% of the Region’s total) followed by Pakistan (30,656; 8.71%) and Tunisia (29,423; CFR 8.36%). The lowest CFRs in the region were reported by Qatar (0.13%), Bahrain (0.22), and the UAE (0.22%), while the highest CFRs were reported by Yemen (18.07%) followed by Sudan (7.89%) and Syria (5.51%) respectively.

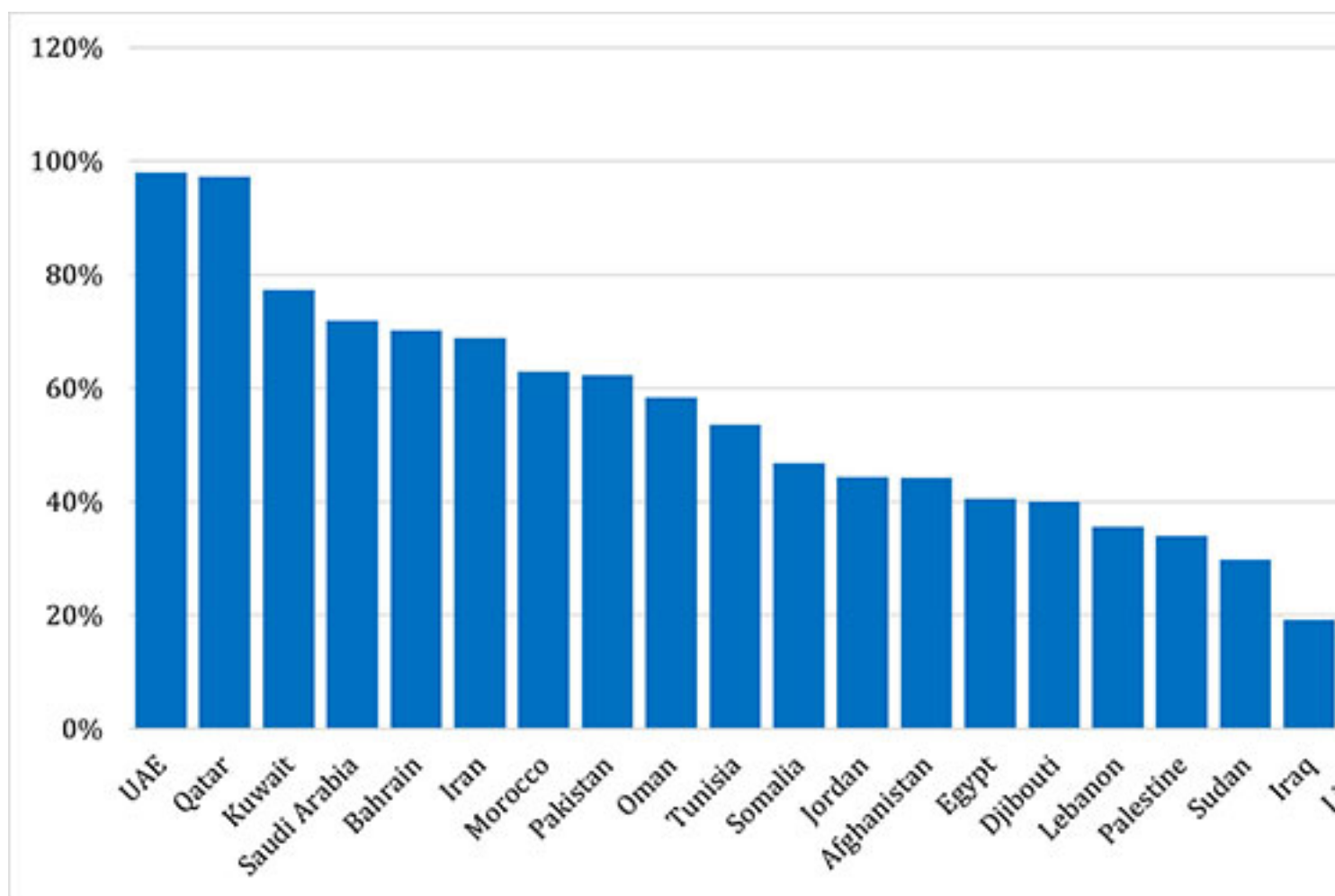


Graph 1: Epidemiological curve of COVID-19 laboratory confirmed cases and CFR, EMR, January- November 2023

WHO Support to the Member States of the Region

The regional incident management support team (IMST) continues to coordinate the response

and provide technical support to the Member States and partners in the Region in the areas of coordination and partnership, surveillance, laboratory capacity, clinical management, infection prevention and control, risk communication and community engagement, points of entry according to the International Health Regulations (2005), research, health systems, and essential health services among others. Furthermore, COVID-19 vaccination continues to be provided across the Region. The total number of doses administered as of 23 November 2023 in the 22 Member States is 902,709,401 and the average coverage of fully vaccinated population in the Region is 51%. The highest coverage rate of complete primary series was reported from the UAE (98%), followed by Qatar (97%), and Kuwait (77%) while the lowest coverage rate was reported by Yemen (3%) followed by Syria (13%) and Libya (18%), (Figure 2).



Graph 2: COVID-19 vaccine coverage by EMR Member States, November 2023

For more data from the Region, please visit the COVID-19 dashboard.

*The data on vaccination is obtained from several sources including media reports and country websites for ministries of health.

* We are currently reporting on weekly relative differences instead of cumulative differences to better reflect the extent of the COVID-19 pandemic as we are witnessing a decline in the reported cases. In addition, to a change in the frequency and quality of data sharing, countries started to move to weekly aggregate data, and less information is shared by countries. [Subscribe](#) to the monthly infectious hazard preparedness newsletter of WHO's Health Emergencies Programme for the latest data and analysis on the epidemic- and pandemic-prone diseases, as well as news on outbreak preparedness and response within WHO's Eastern Mediterranean Region.

Tuesday 21st of May 2024 07:41:04 PM