

## Long-term conditions in Gaza

- > **2000** people diagnosed with cancer each year including 122 children
- > **225 000** people with high blood pressure
- > **1000** patients in need of kidney dialysis to maintain life
- > **60 000** patients living with diabetes
- 45 000** patients living with cardiovascular disease
- > **485 000** people with mental health disorders\*

\* People in Gaza facing daily intense psychological stressors, including bombardment and severe barriers to fulfilling basic needs



## Medication and supply shortages

**45%** of essential medicines had less than a month's supply remaining before 7 October

- Medicines to prevent heart disease and stroke
- Medical supplies for surgery and dialysis
- Insulin for diabetic patients
- Antibiotics to treat infections
- Chemotherapy for cancer patients
- Medicines for treating mental ill health

## Reduced functioning of services

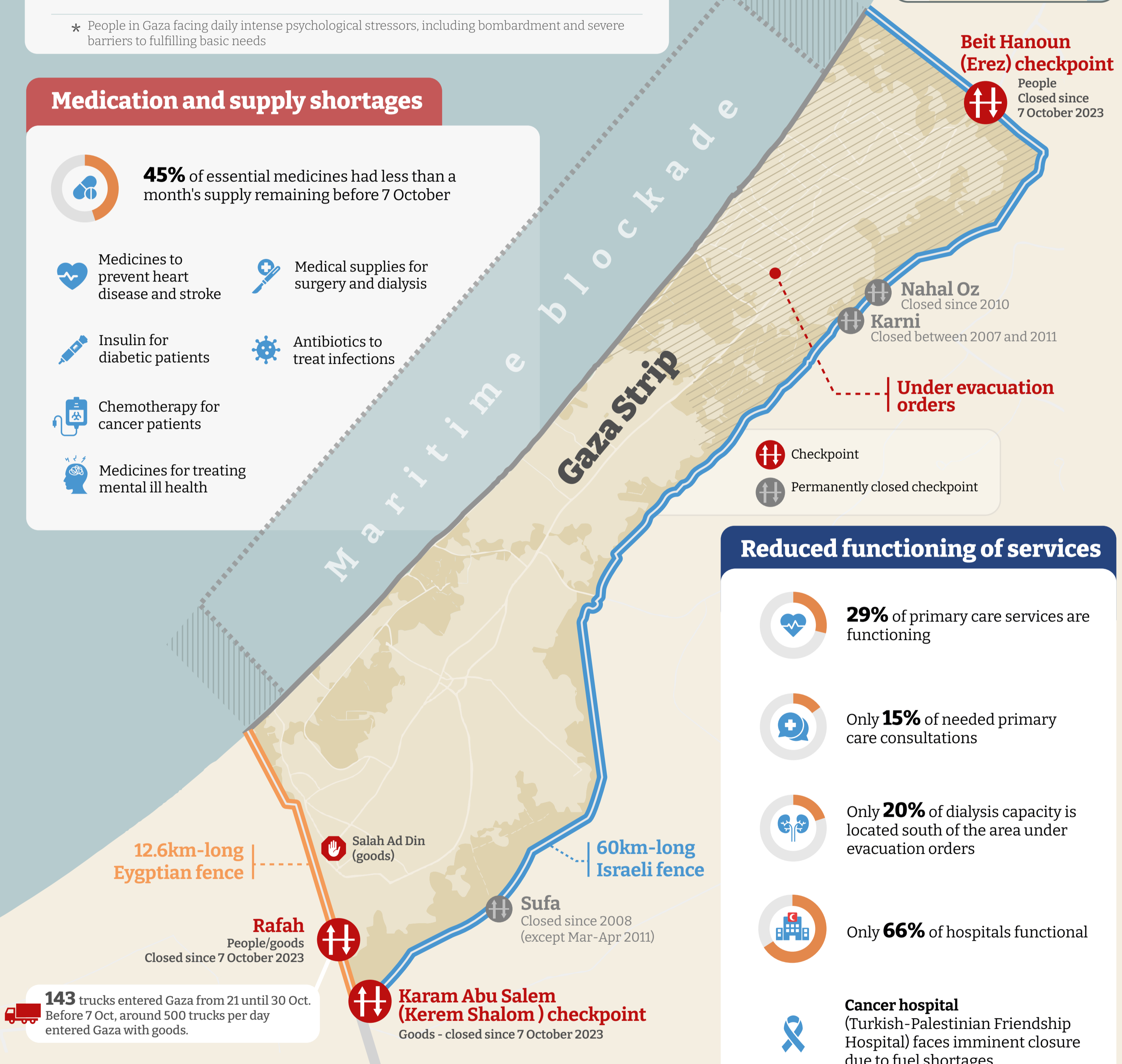
- 29%** of primary care services are functioning
- Only **15%** of needed primary care consultations
- Only **20%** of dialysis capacity is located south of the area under evacuation orders
- Only **66%** of hospitals functional
- Cancer hospital** (Turkish-Palestinian Friendship Hospital) faces imminent closure due to fuel shortages

## Referral needs of Gaza patients

- ~**100** patients per day need access out of Gaza for health care
- 1 in 4** are children
- 1 in 3** require cancer care

### Due to lack of

- Diagnostics
- Medical expertise
- Equipment
- Services
- Treatments



**143** trucks entered Gaza from 21 until 30 Oct. Before 7 Oct, around 500 trucks per day entered Gaza with goods.