

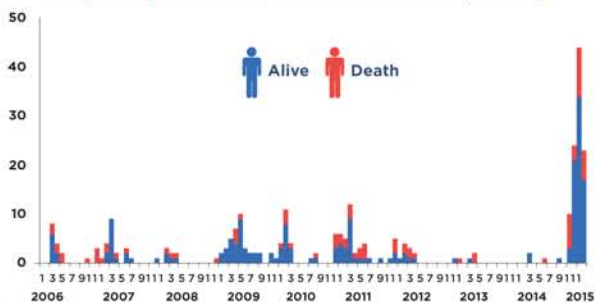
AVIAN INFLUENZA A(H5N1) SITUATION UPDATE

31 MARCH 2015 EGYPT

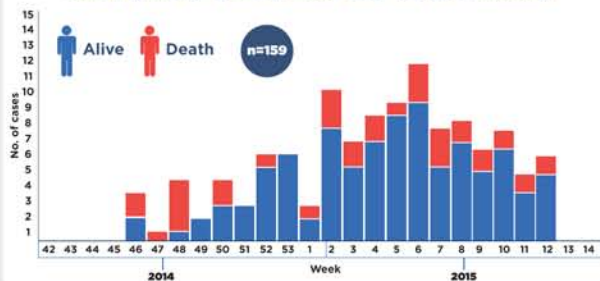
HIGHLIGHTS

- Since its emergence in March 2006, a total of 336 cases of avian influenza A(H5N1) infections in humans have been reported from Egypt including 114 deaths (CFR=33.8%). Of these, a total of 159 cases including 47 deaths (CFR: 29%) were reported since November 2014 when the country experienced a surge in human infections.
- Cases were reported from 21 out of 29 governorates in the country during the recent surge. Amongst the cases reported since November 2014, the females comprised of 60% of all reported cases and had a higher death rate of 33% compared to 28% reported amongst the males.
- Since the upsurge in cases began in November 2014, the age group of 30-45 years has been found to be the most at risk of acquiring the infection (31%) followed by children in the under 5 years age group (28%) while the age-group of above 45 years had the highest case-fatality rate (47%) while the children under 5 years of age group had the lowest case-fatality rate (7%).
- Despite the recent surge in human cases, the demographic and epidemiological characteristics of the reported cases do not show any significant change.

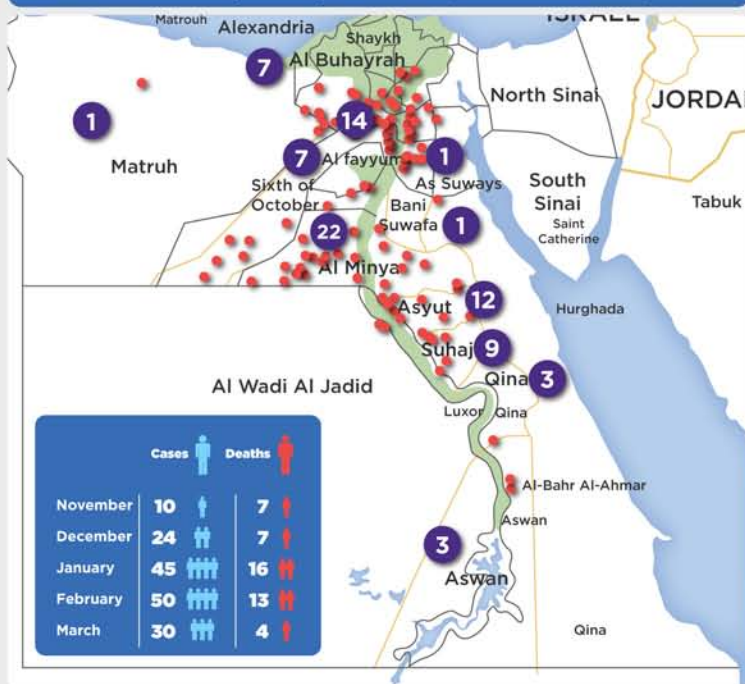
REPORTED HUMAN CASES OF AVIAN INFLUENZA A (H5N1) IN EGYPT, 2006- MAR 2015 (n=336)



DISTRIBUTION OF H5N1 CASES BY WEEK OF ONSET, EGYPT, 2014-2015 (UP TO 31 MARCH)



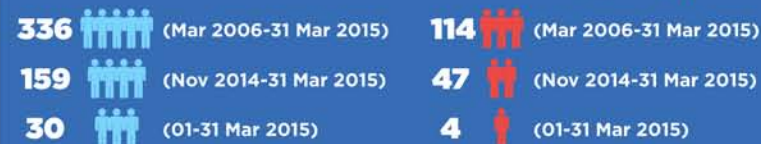
DISTRIBUTION OF H5N1 CASES BY GOVERNORATE OF RESIDENCE, EGYPT, 2014-2015 (UP TO 31 MARCH)



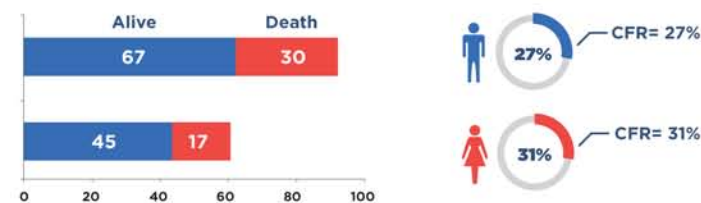
CFR BY AGE GROUP AND GENDER, EGYPT 2014-2015 (UP TO 31 MARCH)

Age Group	Gender	Total cases	Death	Gender specific CFR	Age specific CFR
≤ 5	Male	20	3	15%	7%
	Female	24	0	0%	
> 5 - 15	Male	11	4	36%	25%
	Female	5	0	0%	
> 15 - 30	Male	8	2	25%	38%
	Female	21	9	43%	
> 30 - 45	Male	15	5	33%	39%
	Female	36	15	42%	
> 45	Male	8	3	38%	47%
	Female	11	6	55%	

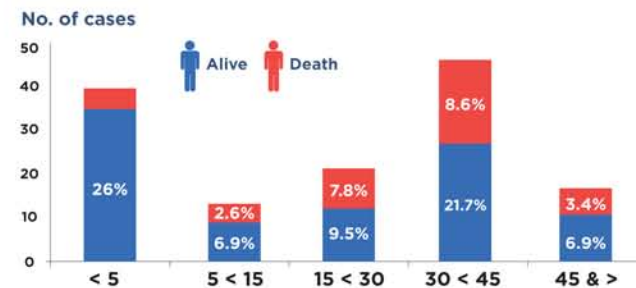
SUMMARY



DISTRIBUTION OF H5N1 CASES BY GENDER, EGYPT, 2014-2015 (UP TO 31 MARCH)



DISTRIBUTION OF H5N1 CASES BY AGE GROUP, EGYPT NOVEMBER 2014 - 2015 (UP TO 31 MARCH)



OUTCOME OF PATIENCE BY TIME INTERVAL BETWEEN DATE OF ONSET AND ADMISSION

